



PLAN

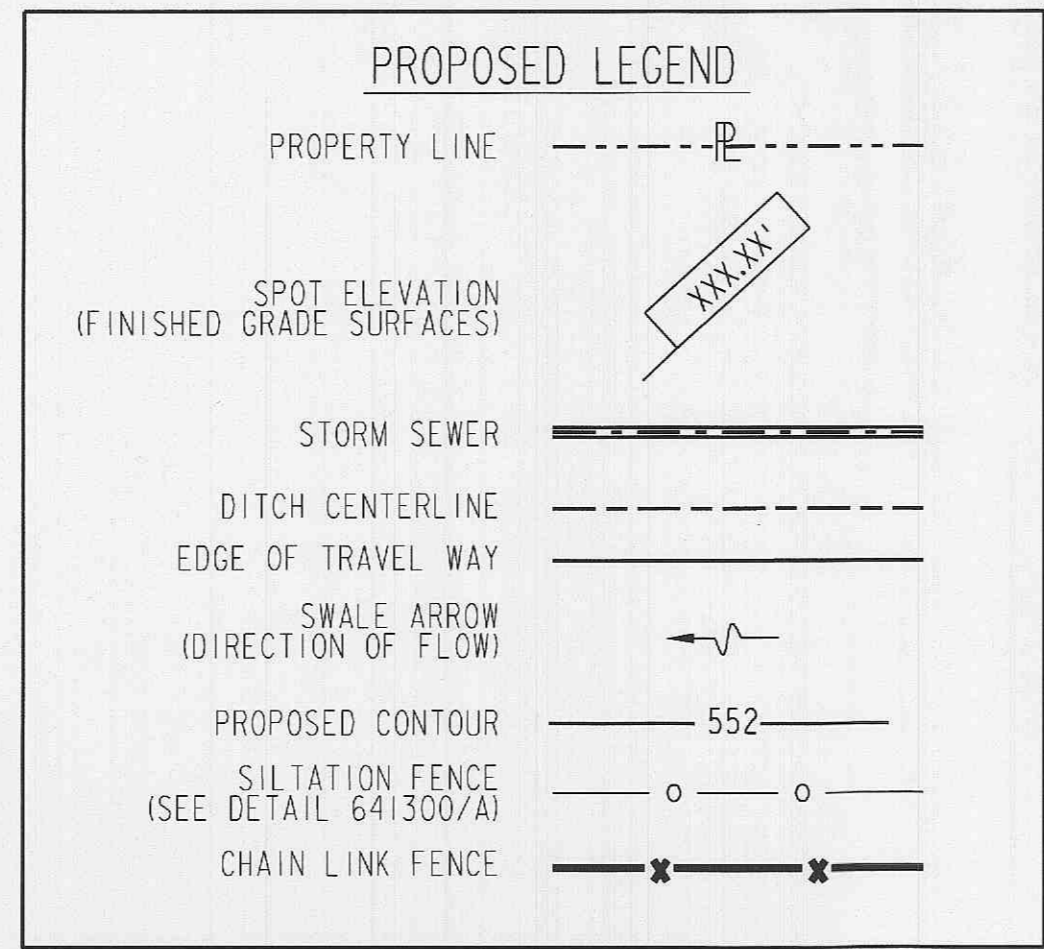
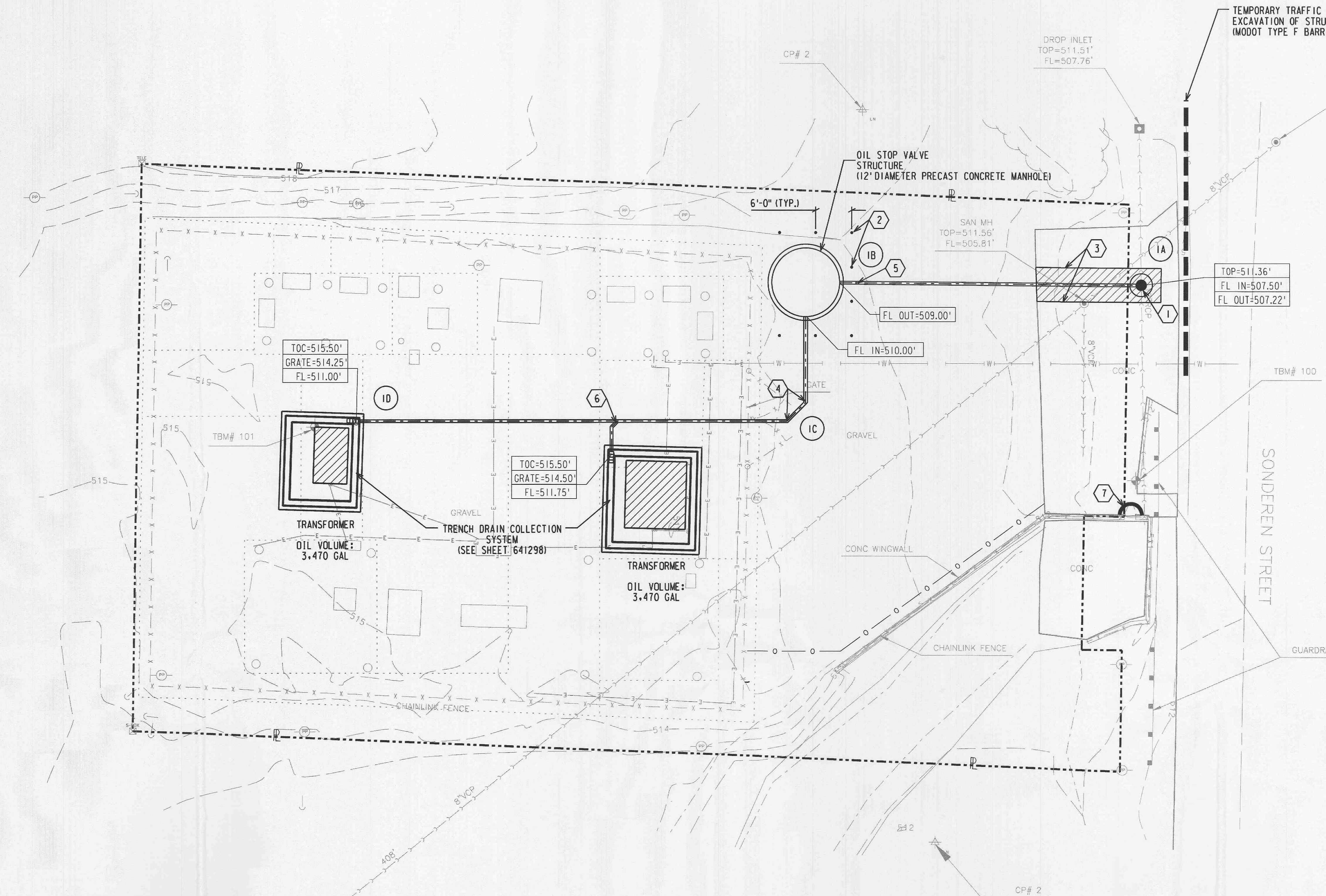


**KEYED NOTES:**

- 1 MANHOLE (48" DIAMETER PRECAST CONCRETE, 641301/A)
- 2 PIPE BOLLARDS (6 TOTAL - SPACED AROUND MANHOLE) SEE DETAIL 641301/B)
- 3 REMOVE AND REPLACE CONCRETE APRON, FULL DEPTH SAWCUT AROUND PERIMETER. (SEE DETAIL 641300/H)
- 4 45° ELBOW CONNECTION
- 5 INLINE BACKWATER VALVE (6" SPEARS PVC BACKWATER VALVE W/ GASKETED FITTINGS.)
- 6 WYE CONNECTION (8" HDPE)
- 7 SILTATION SOCK (SEE DETAIL 641301/D)

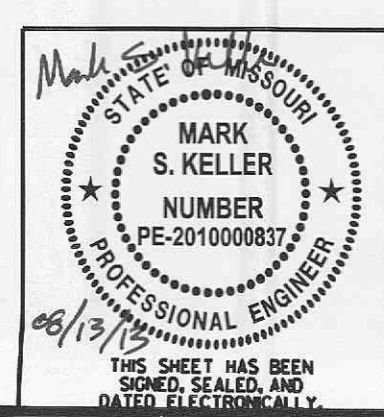
**REFERENCES:**

- STRUCTURE - CONCRETE DETAILS FOUNDATIONS AND FOOTINGS, UNIT W ----- 8498-X-24548
- GROUNDING PAN AND DETAILS ----- 8498-X-24549
- YARD PLAN - GROUNDING, CONDUIT, FENCE AND FOUNDATION LOCATION, UNIT D ----- 8498-Y-72951
- STRUCTURE - CONCRETE DETAILS FOOTINGS - UNIT D ----- 8498-Y-72952
- STRUCTURE - CONCRETE DETAILS TRANSFORMER FOUNDATION, UNIT D ----- 8498-Z-72953
- STRUCTURE - CONCRETE FOUNDATION DETAILS SHEET NO. 2 ----- 8455-X-47871
- TOPOGRAPHIC SURVEY ----- 641295
- BOUNDARY SURVEY ----- 641296
- TRANSFORMER SPCC DETAILS ----- 641298
- OIL STOP VALVE STRUCTURE DETAILS ----- 641299



**OIL SPILL CONTROL CALCULATIONS**

CONTAINMENT VOLUME NEEDED	930 CUBIC FEET
CONTAINMENT VOLUME PROVIDED	1,017 CUBIC FEET



REV	PROJ ID	DATE	DRWN	RVW	APPD
0	JS44148	08/13/13	MSK	DML	MSK

**PROPERTY - SITE AND UTILITY PLAN**

**SONDEREN SUBSTATION**

641297

0

FILE: 641297-SITEPLAN.dgn  
PRINTED BY: Unknown  
TIME: 8/13/2013 3:04:47 PM

24X36