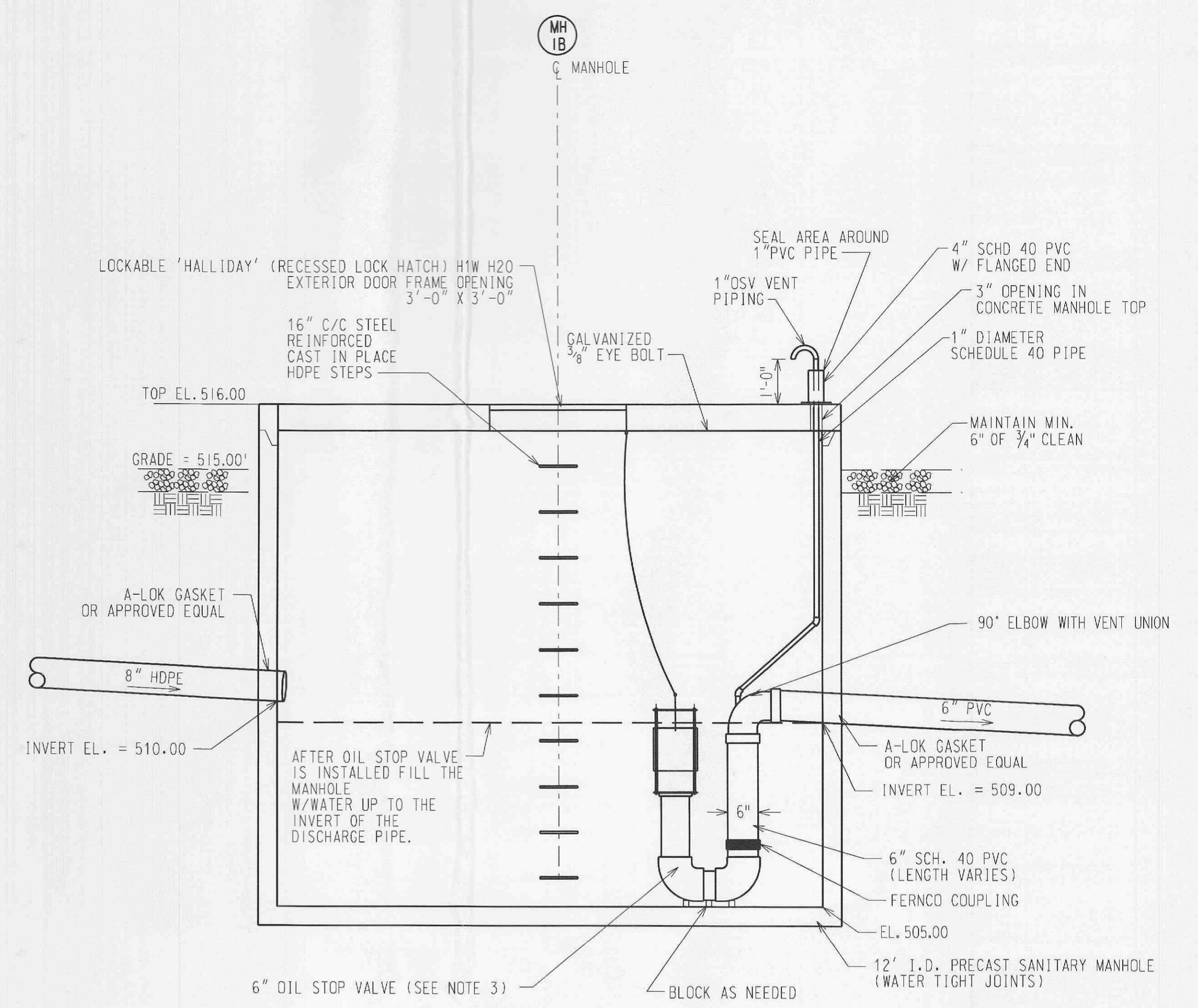


**PLAN VIEW - MH 1B**  
OIL SPILL CONTAINMENT  
& WATER DISCHARGE  
(NTS)

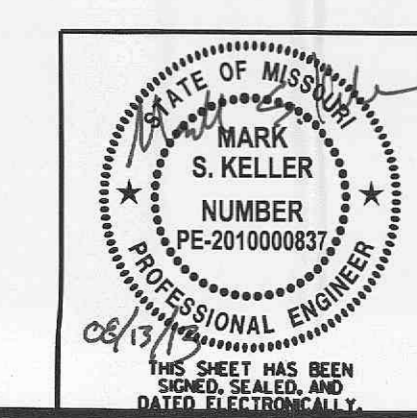


**DISCHARGE PROFILE - MH 1B**  
(NTS)

- GENERAL NOTES:**
1. THE MANHOLE SHALL BE PRECAST SANITARY SEWER MANHOLE WITH A FLAT TOP AND A CAST-IN-PLACE "HALLIDAY" DOOR.
  2. ALL JOINTS IN THE MANHOLE, INCLUDING THE JOINT BETWEEN THE BASE AND THE BOTTOM RING, SHALL BE WATER TIGHT. ALL PIPE PENETRATIONS SHALL BE WATERTIGHT.
  3. THE OIL STOP VALVE SHALL BE PROVIDED BY AMEREN AND INSTALLED BY THE CONTRACTOR. THE STOP VALVE SHALL BE MANUFACTURED BY AFL INDUSTRIES OR EQUIVALENT. CONTRACTOR SHALL INSTALL THE OIL STOP VALVE PER MANUFACTURER'S SPECIFICATIONS USING 6" STANDARD OIL STOP VALVE & PER THIS DRAWING.
  4. IF THE OIL STOP VALVE IS NOT AVAILABLE FOR INSTALLATION AT THE TIME OF MANHOLE CONSTRUCTION, THE CONTRACTOR SHALL EXTEND THE 6 INCH LINE A MINIMUM OF 12 INCHES INTO THE MANHOLE FOR LATER CONNECTION TO THE STOP VALVE.

**REFERENCES:**

TOPOGRAPHIC SURVEY	-----	641295
BOUNDARY SURVEY	-----	641296
PROPERTY - CITY AND UTILITY PLAN	-----	641297



REV	PROJ ID	DATE	DRWN	RVW	APPD	STRUCTURE - MISC. DETAILS OIL SPILL CONTAINMENT AND WATER DISCHARGE SYSTEM
0	JS44128	08/13/13	MSK	DML	MSK	SONDEREN SUBSTATION

641299	0	AMEREN MISSOURI
--------	---	-----------------

FILE: 641299\_STOP\_VALVE\_DETAILS.dgn  
 PRINTED BY: 8/13/2013 3:05:49 PM