



PLAN

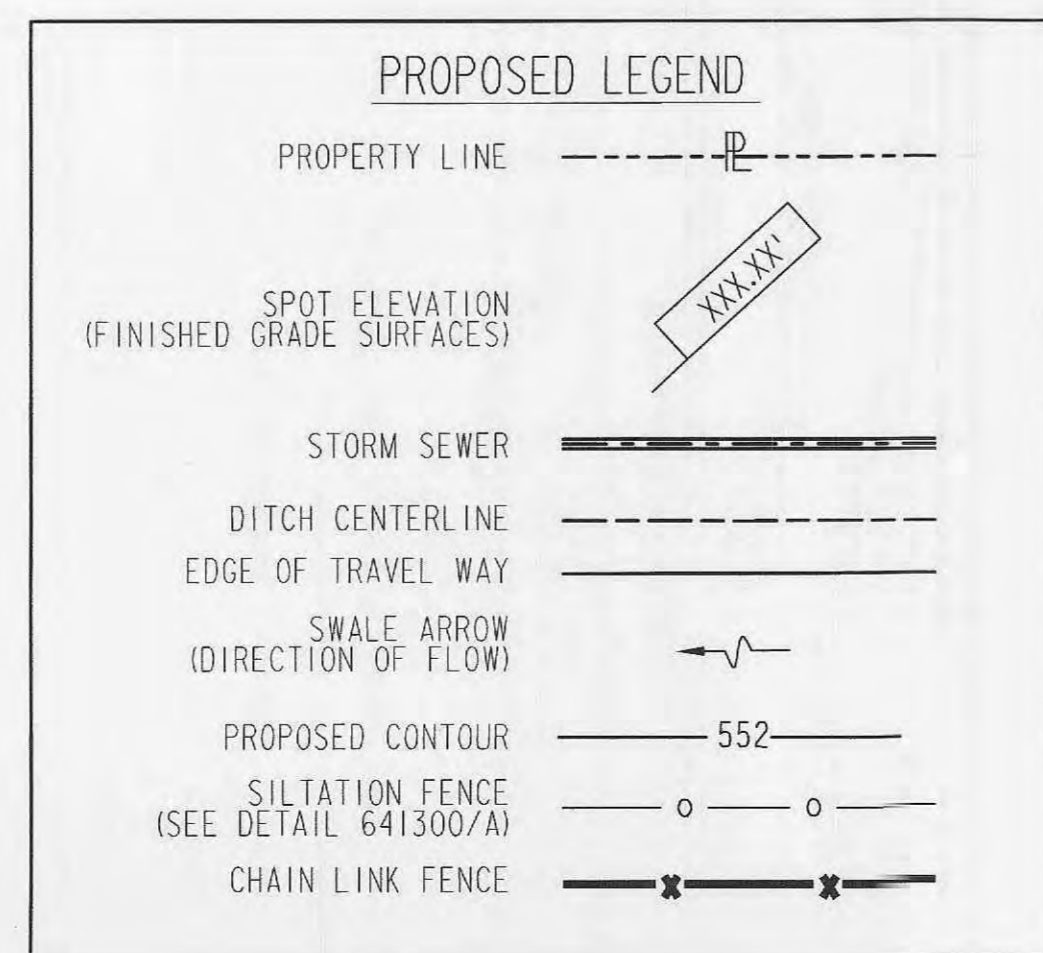
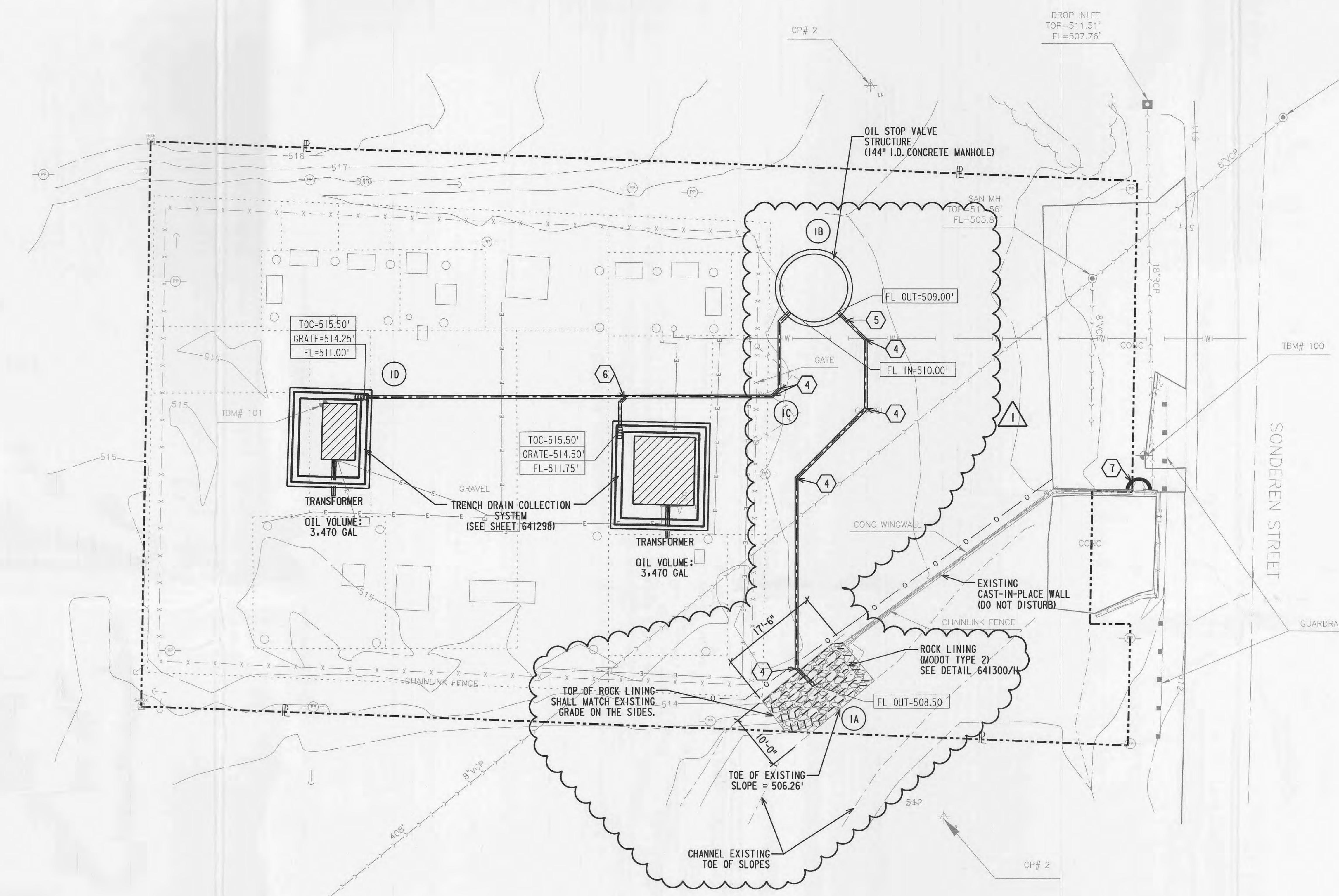


KEYED NOTES:

- 1 NOT USED
- 2 NOT USED
- 3 NOT USED
- 4 45° ELBOW CONNECTION
- 5 IN LINE BACKWATER VALVE (6" SPEARS PVC BACKWATER VALVE W/ GASKETED FITTINGS.)
- 6 WYE CONNECTION (8" HDPE)
- 7 SILTATION SOCK (SEE DETAIL 641301/D)

REFERENCES:

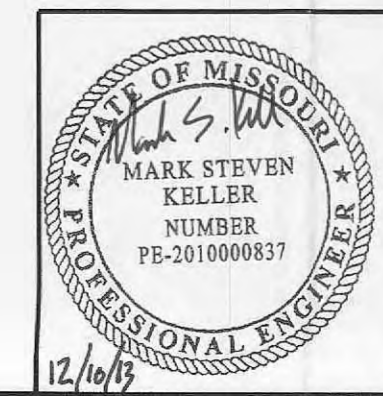
- STRUCTURE - CONCRETE DETAILS, FOUNDATIONS AND FOOTINGS, UNIT W ----- 8498-X-24548
- GROUNDING PAN AND DETAILS, TRANSFORMER W ----- 8498-X-24549
- YARD PLAN - GROUNDING, CONDUIT, FENCE AND FOUNDATION LOCATION, UNIT D ----- 8498-Y-72951
- STRUCTURE - CONCRETE DETAILS, FOOTINGS - UNIT D ----- 8498-Y-72952
- STRUCTURE - CONCRETE DETAILS, TRANSFORMER FOUNDATION, UNIT D ----- 8498-Z-72953
- STRUCTURE - CONCRETE FOUNDATION DETAILS, SHEET NO. 2 ----- 8455-X-47871
- TOPOGRAPHIC SURVEY ----- 641295
- BOUNDARY SURVEY ----- 641296
- TRANSFORMER SPCC DETAILS ----- 641298
- OIL STOP VALVE STRUCTURE DETAILS ----- 641299



OIL SPILL CONTROL CALCULATIONS

CONTAINMENT VOLUME NEEDED 930 CUBIC FEET
CONTAINMENT VOLUME PROVIDED 1,017 CUBIC FEET

CITY OF O'FALLON
COMMUNITY DEVELOPMENT DEPARTMENT
ACCEPTED FOR CONSTRUCTION
BY: *[Signature]* DATE: 12-20-13
PROFESSIONAL ENGINEER'S SEAL
INDICATES RESPONSIBILITY FOR DESIGN



REV	PROJ ID	DATE	DRWN	RVW	APPD
1	JS44148	12/09/13	MSK	DM	MSK
0	JS44148	08/13/13	MSK	DM	MSK

PROPERTY - SITE AND UTILITY PLAN	
SONDEREN SUBSTATION	
641297	REV 1

FILE: 641297-SITEPLAN.dgn
PRINTED BY: kunkow
TIME: 12/10/2013 2:14:30 PM

24X36
Bldg