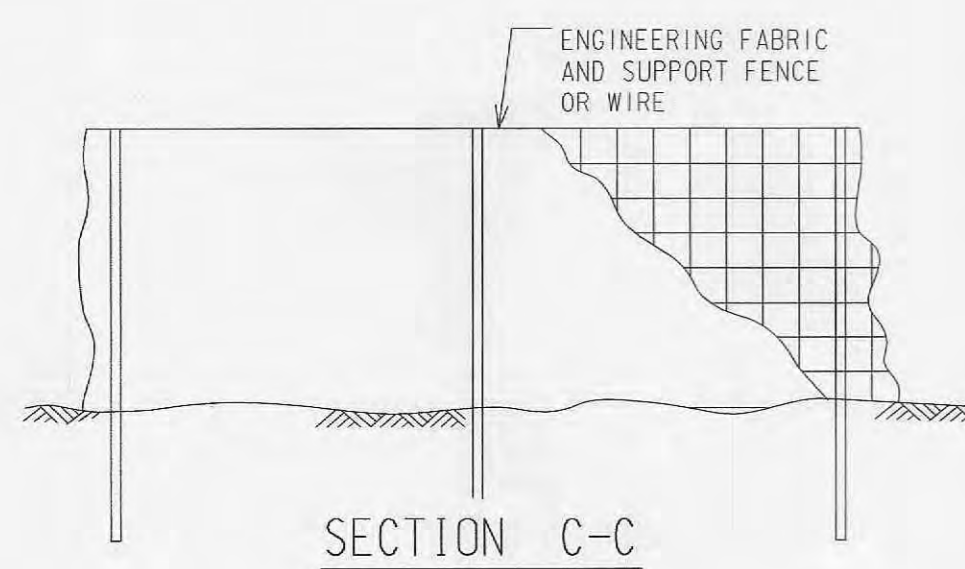
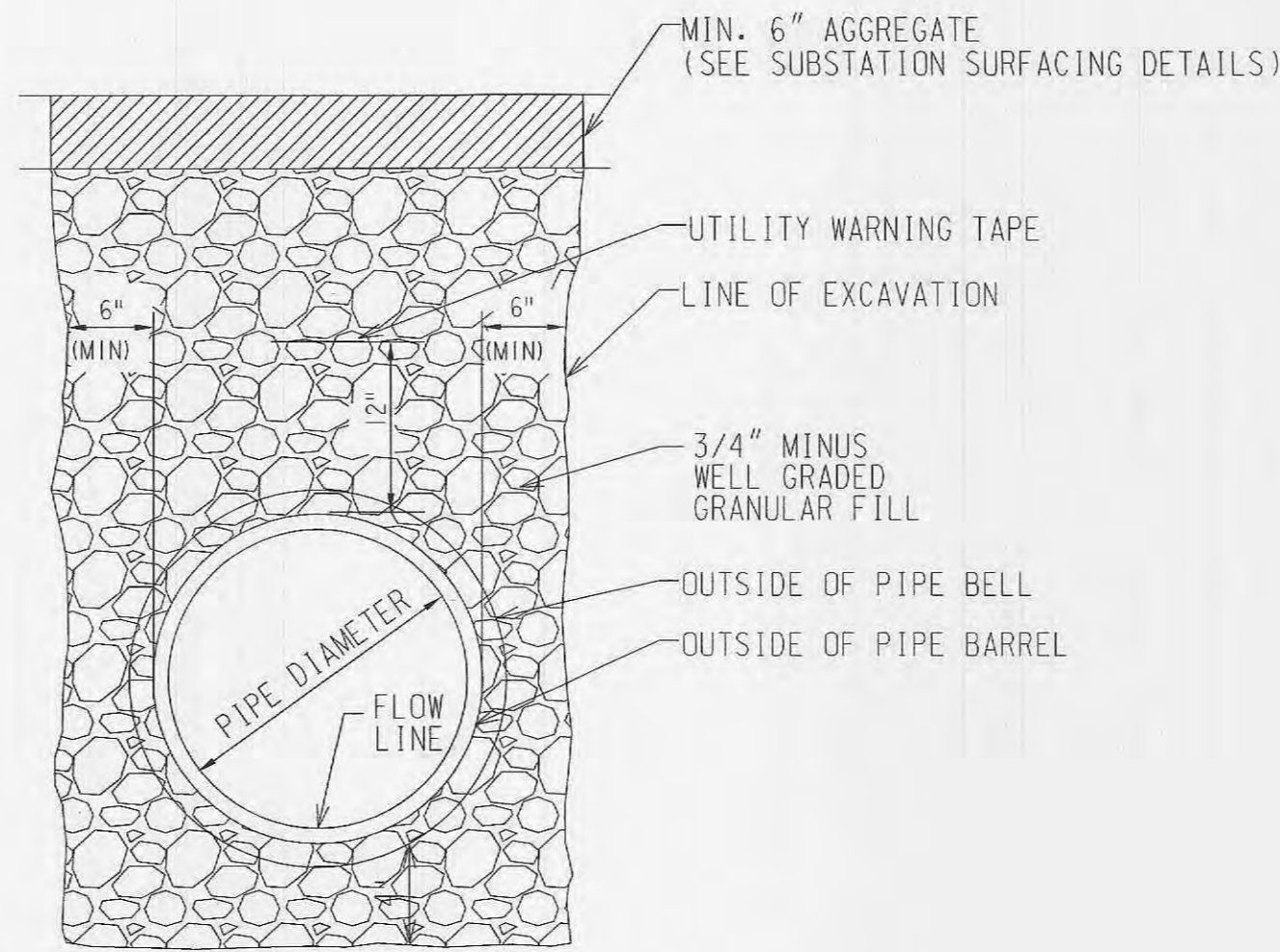
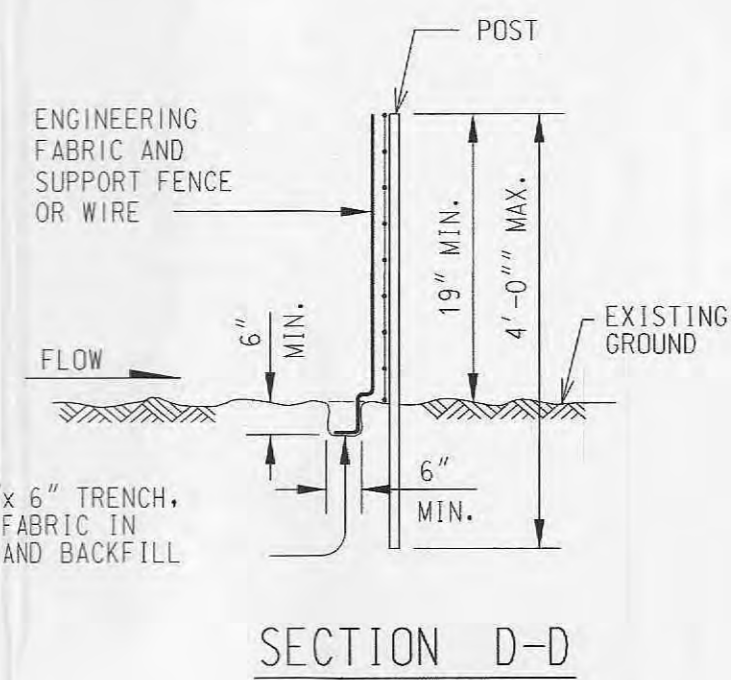


- SILT FENCE NOTES:**
1. MINIMUM LONGITUDINAL SPLICE OVERLAP SHALL BE 2' WITH A POST AT EACH END.
 2. SECURE FABRIC TO POSTS.
 3. SUPPORT FENCE REQUIRED WITH SILT FENCE AROUND DROP INLET OR WHEN USED ACROSS DITCH.

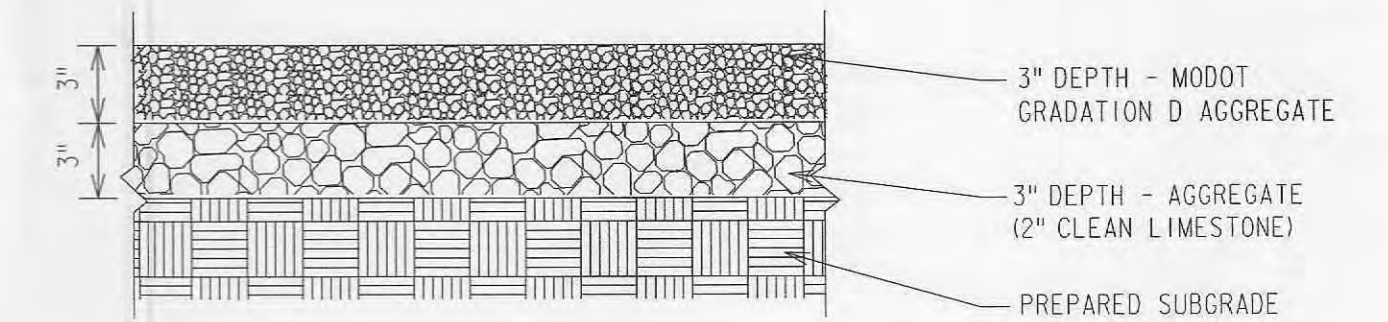


A SILTATION FENCE DETAIL
NOT TO SCALE

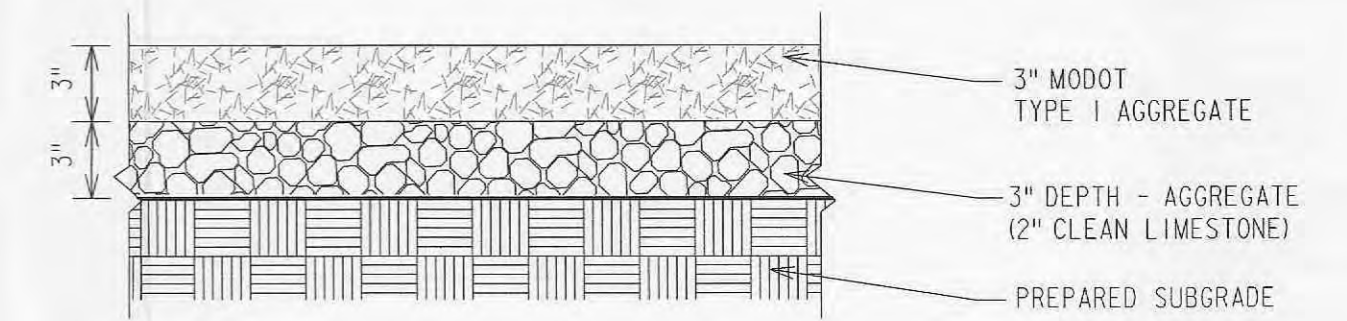


- NOTES:**
1. THIS DETAIL IS FOR UTILITY TRENCHES BELOW SUBSTATION YARD AND PAVEMENT.
 2. ALL COMPACTION SHALL BE TO 90% MAXIMUM DENSITY AS DETERMINED FROM THE MODIFIED PROCTOR COMPACTION TEST (ASTM D 1557).

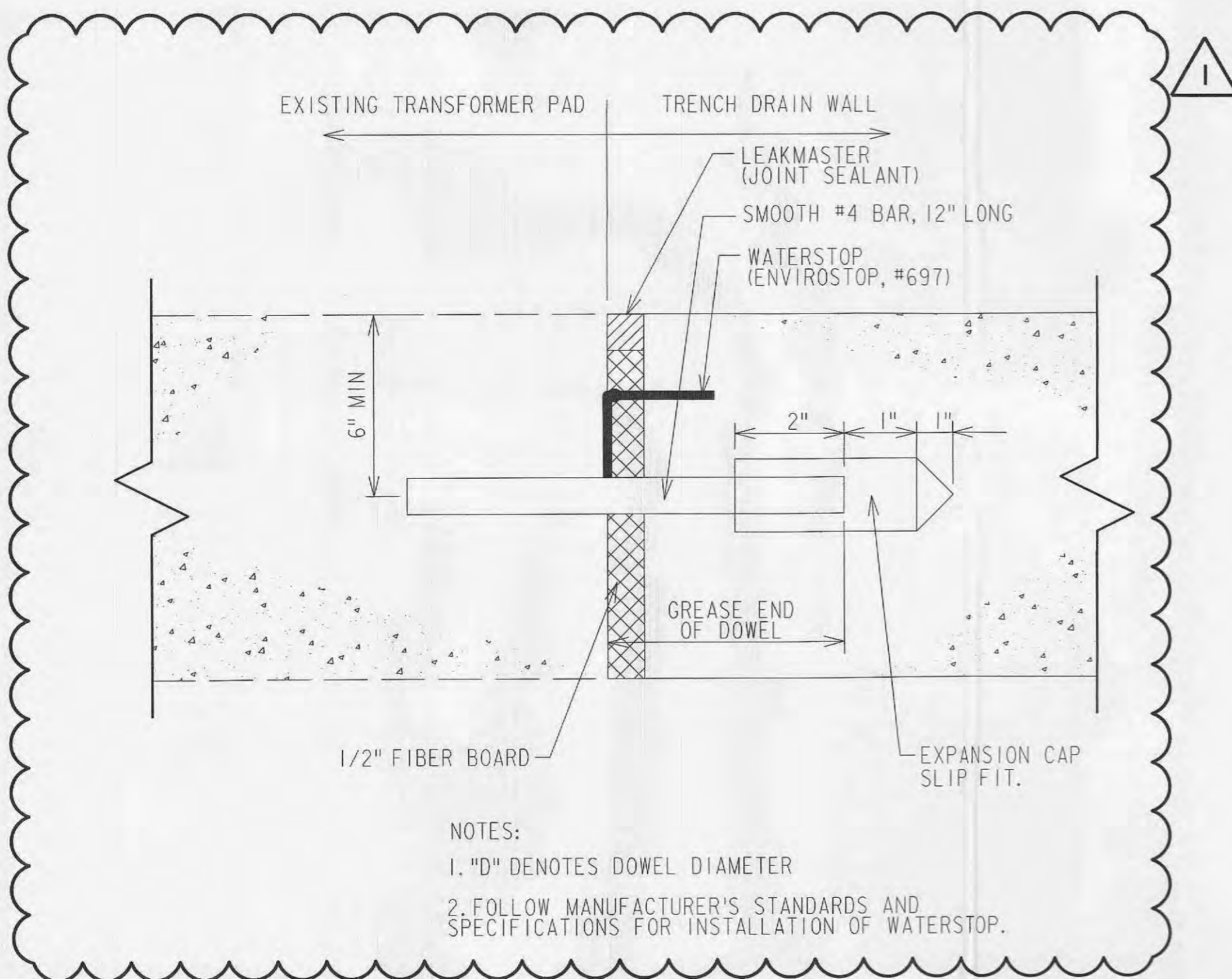
B UTILITY TRENCH - BELOW SUBSTATION YARD
NOT TO SCALE



C SUBSTATION YARD SURFACING
NOT TO SCALE

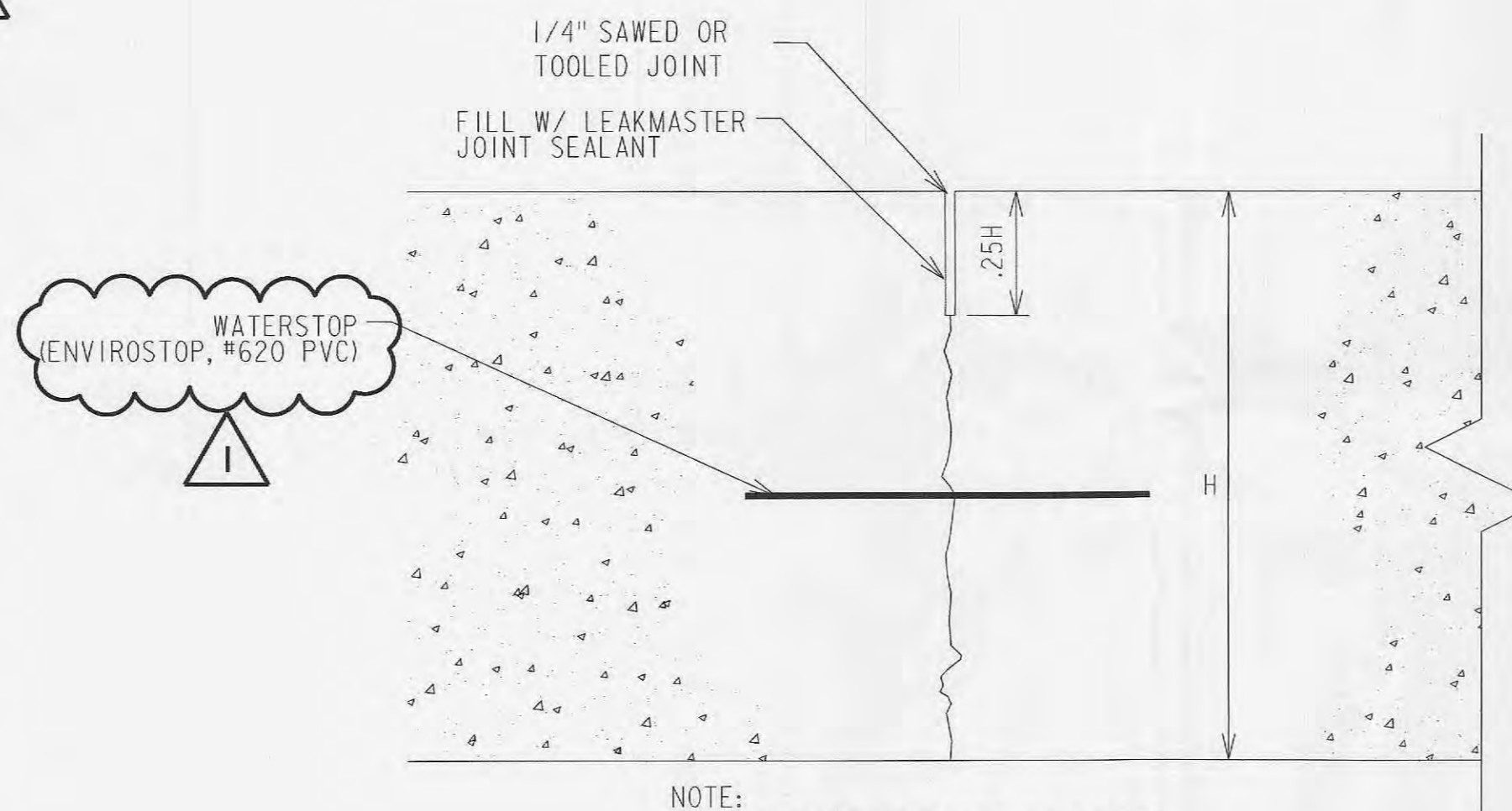


D SUBSTATION DRIVE SURFACING
NOT TO SCALE



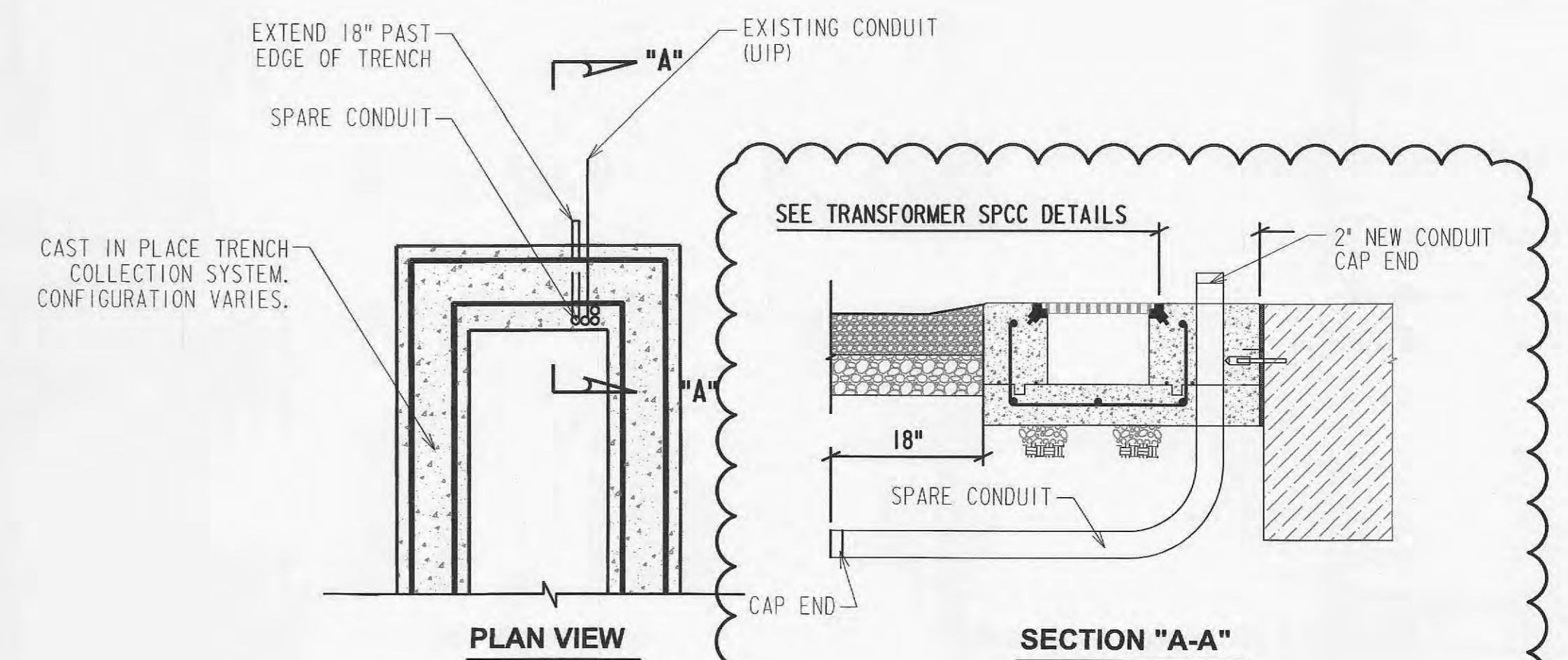
- NOTES:**
1. "D" DENOTES DOWEL DIAMETER
 2. FOLLOW MANUFACTURER'S STANDARDS AND SPECIFICATIONS FOR INSTALLATION OF WATERSTOP.

E EXPANSION JOINT - DOWELED
NOT TO SCALE



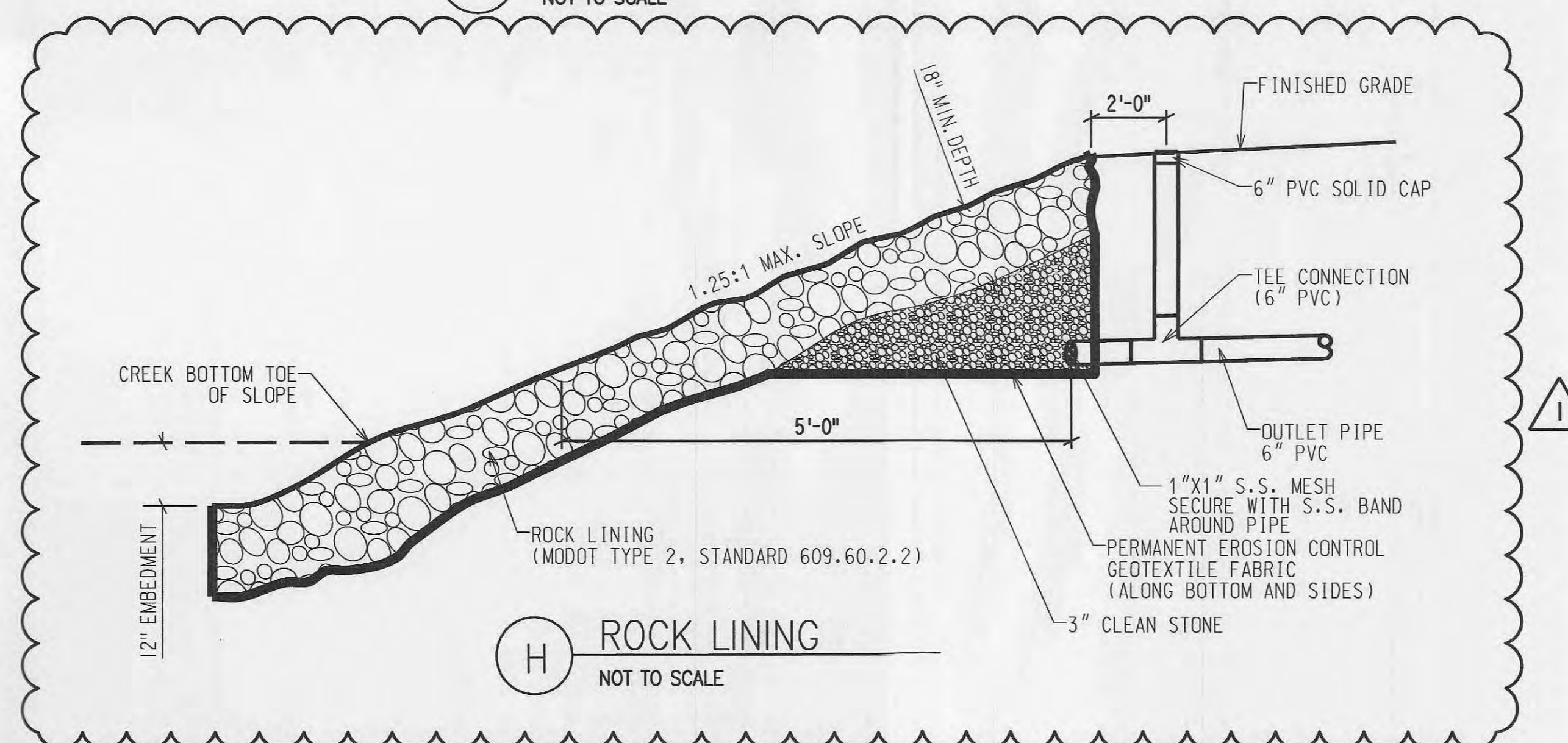
- NOTE:**
1. "H" DENOTES CONCRETE THICKNESS (SEE PAVEMENT SECTIONS)
 2. SAWCUT PAVEMENT WITHIN 12 HOURS OF PLACEMENT.
 3. STEEL REINFORCEMENT NOT SHOWN.

F CONTRACTION JOINT
NOT TO SCALE

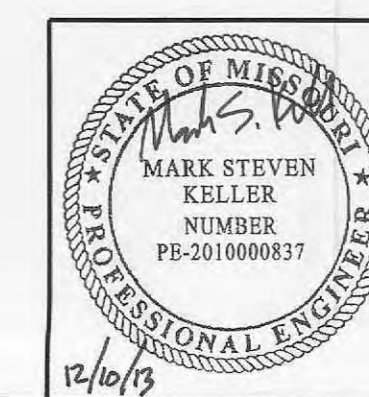


- NOTES:**
1. SEE TRANSFORMER SPCC DETAIL SHEET FOR TRENCH NOTES AND DETAILS.

G TRENCH - VERTICAL CONDUIT PENETRATIONS
NOT TO SCALE



H ROCK LINING
NOT TO SCALE



REV	PROJ ID	DATE	DRWN	RVW	APPD	MISC. DETAILS
1	JS44148	12/09/13	MSK	DM	MSK	SONDEREN SUBSTATION
0	JS44148	08/13/13	MSK	DM	MSK	641300