

PRINT DIST.	161671-Y-149191	3
REVISIONS		
REV. 0	W.O.	
FIRST ISSUE		
REV. 1	DATE 05300	DRAWN MSM
CHKD	SUPV	APPD C.J.G.
W.O. 10969		FILM
ADDED DWGS. 193, 194, 196, 197, 203, 204, & 207		
REV. 2	DATE 06200	DRAWN MSM
CHKD	SUPV	APPD C.J.G.
W.O. 10969		FILM
ADDED DWG. 199,		
REV. 3	DATE 07100	DRAWN MSM
CHKD	SUPV	APPD C.J.G.
W.O. 10969		FILM
ADDED DWG. 208, REV. 203 & 204		

# AMEREN UE

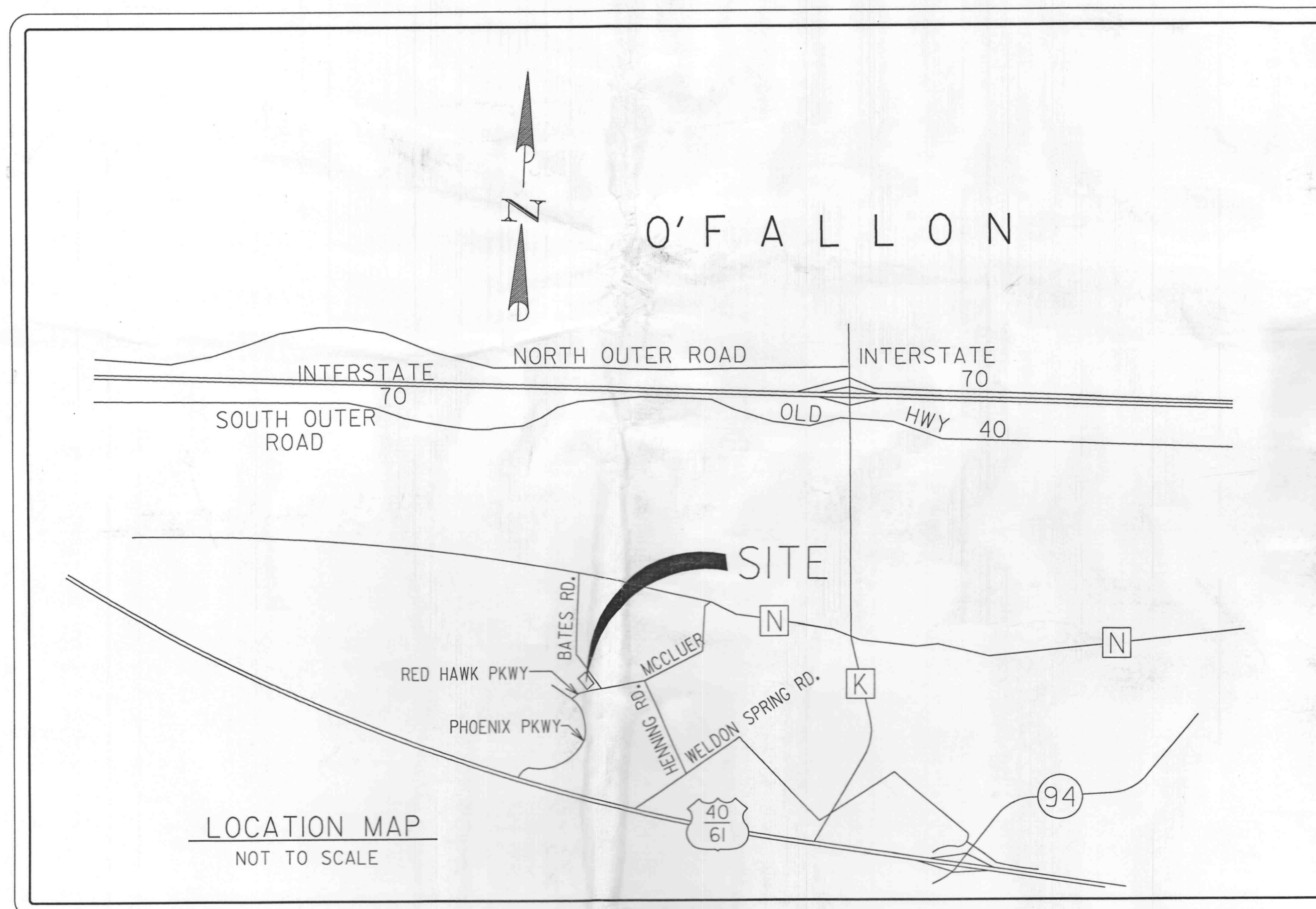
## “WINGHAVEN”

### SUBSTATION

O'FALLON, MO 63366

**UTILITIES:**

GAS: LACLEDE GAS COMPANY.....(314) 658-5418  
 WATER: ALLIANCE WATER RESOURCES.....(636) 281-2866  
 SEWER: ALLIANCE WATER RESOURCES.....(636) 281-2866  
 TELEPHONE: GTE.....(314) 332-7623  
 ELECTRIC: AMEREN UE.....(636) 639-8210



**DRAWING INDEX**

TITLE	NO.
COVER SHEET	9443-Y-149191
SITE PLAN	9443-Y-149192
GRADING AND SURFACING	9443-Y-149193
GRADING AND SURFACING, DETAILS	9443-Y-149194
FOUNDATION LOCATION PLAN	9443-Y-149195
CONCRETE DET., SWITCHGEAR FDN.	9443-Y-149196
CONCRETE DET., 34KV TRANSFORMER FDN.	9443-Y-149197
LANDSCAPE PLAN	9443-Y-149198
STORM SEWER PROFILES	9443-Y-149199
EQUIPMENT ASSEMBLY, SECTIONS	9443-Y-149201
EQUIPMENT ASSEMBLY, SECTIONS	9443-Y-149202
CONDUIT AND GROUNDING PLAN	9443-Y-149203
CONDUIT AND GROUNDING PLAN, DETAILS	9443-Y-149204
CONCRETE DET., MISC., FDN'S.	9443-Y-149207
POWER DUCT ROUTING	9443-Y-149208

FOR CONSTRUCTION  
 FOR RECORD ONLY  
 C.J.O. NO.

BUILDING FILE  
**APPROVED**  
 P. 18 2000  
*[Signature]*

PREPARED BY:



One Ameren Plaza  
 1901 Chouteau Ave.  
 St. Louis, Missouri  
 63166-6149  
 (314) 554-2942

NOTICE OF LIMITED RESPONSIBILITY  
 THE RESPONSIBILITY OF THE UNDERSIGNED ENGINEER IS LIMITED TO THE DESIGN WORK SHOWN ON PROJECT DRAWINGS AND DOCUMENTS BEARING HIS/HER SEAL, SIGNATURE OR INITIALS. HE/SHE DOES NOT HAVE AUTHORITY OVER THE PROJECT AS A WHOLE. THE UNDERSIGNED DISCLAIMS ANY RESPONSIBILITY FOR WORK DONE UNDER SUBSEQUENT REVISIONS AND ANY OTHER DOCUMENTS ASSOCIATED WITH THE PROJECT WHICH DO NOT BEAR HIS/HER SEAL, SIGNATURE OR INITIALS.

REV. 0 SEALED BY  
 DRAWN 4 FEB 00  
 P. MANIS  
 CHKD.  
 SUPV.  
 THOMAS LEE  
 HOLLENKAMP  
 NUMBER  
 E-18247

APPD. 14 FEB 00  
 C.J.G.  
 LOCATION 004726

PREPARED FOR **Ameren UE**  
**COVER SHEET**  
**WINGHAVEN SUBSTATION**  
 CLASS 01010  
 ST. LOUIS, MISSOURI  
 9443-Y-149191  
 REV. 3



BUS2000-1107