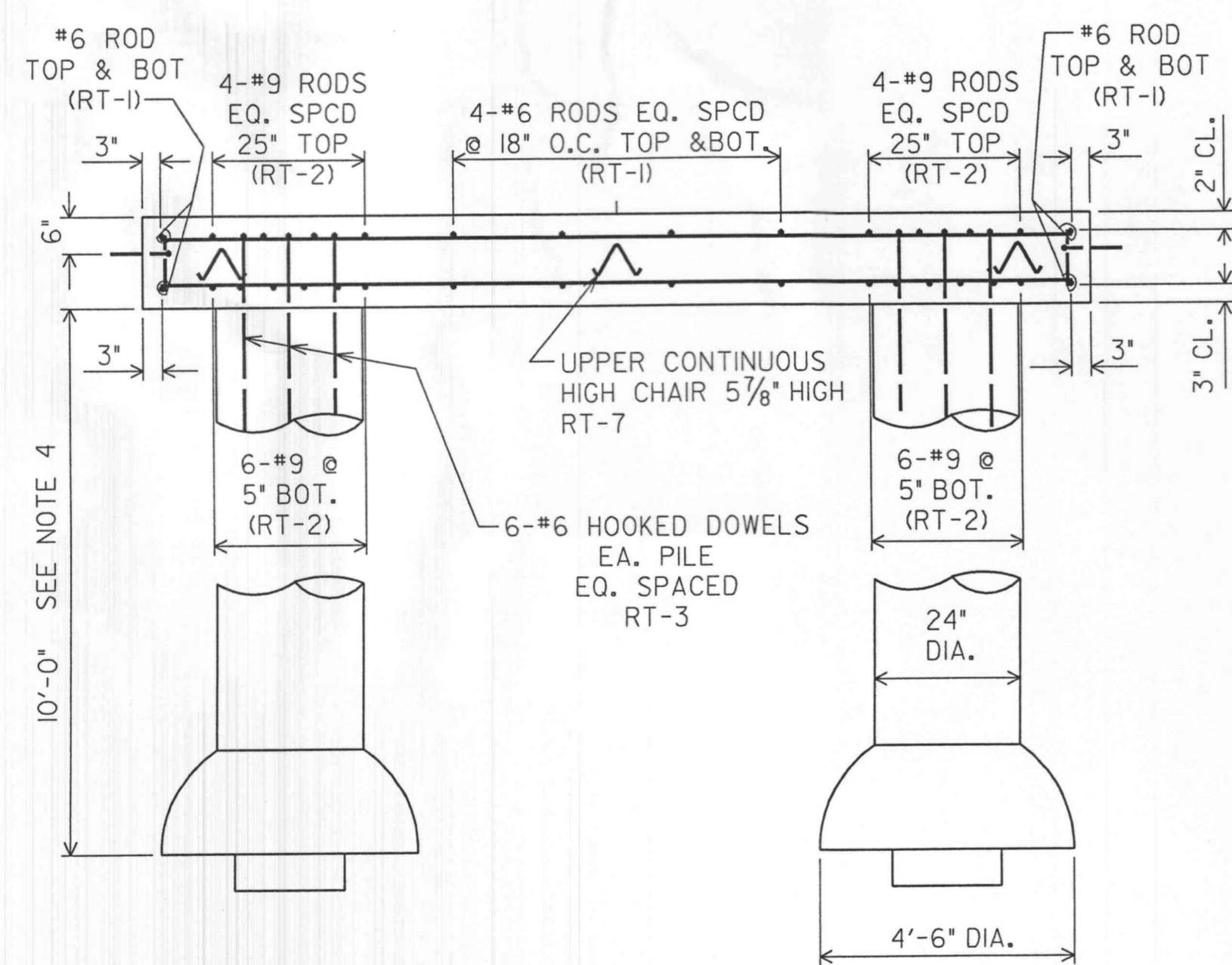
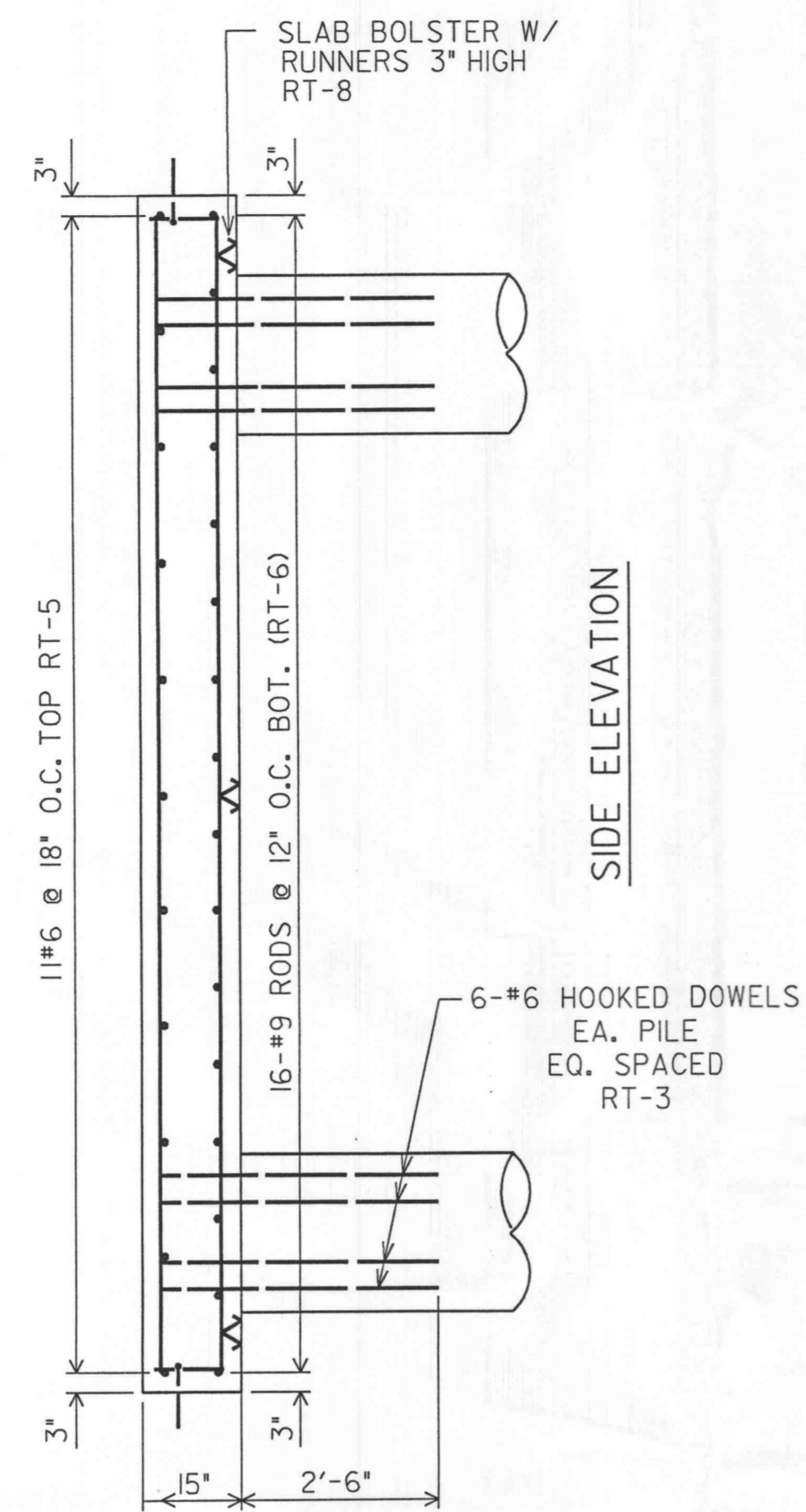
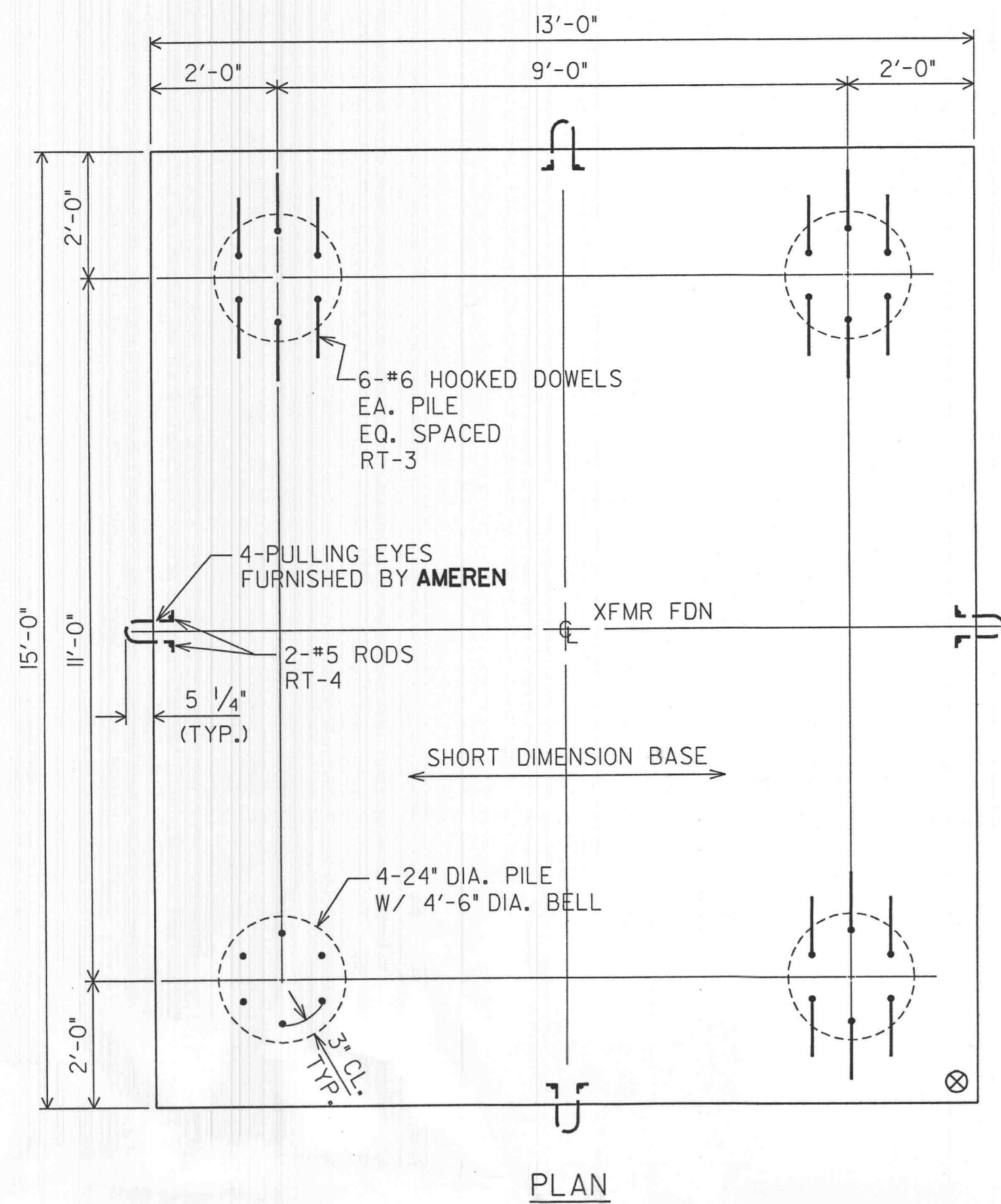


PRINT DIST. REVISIONS
 REV. 1 W.O. 10969
 0 FIRST ISSUE

9443-Y-149197

3

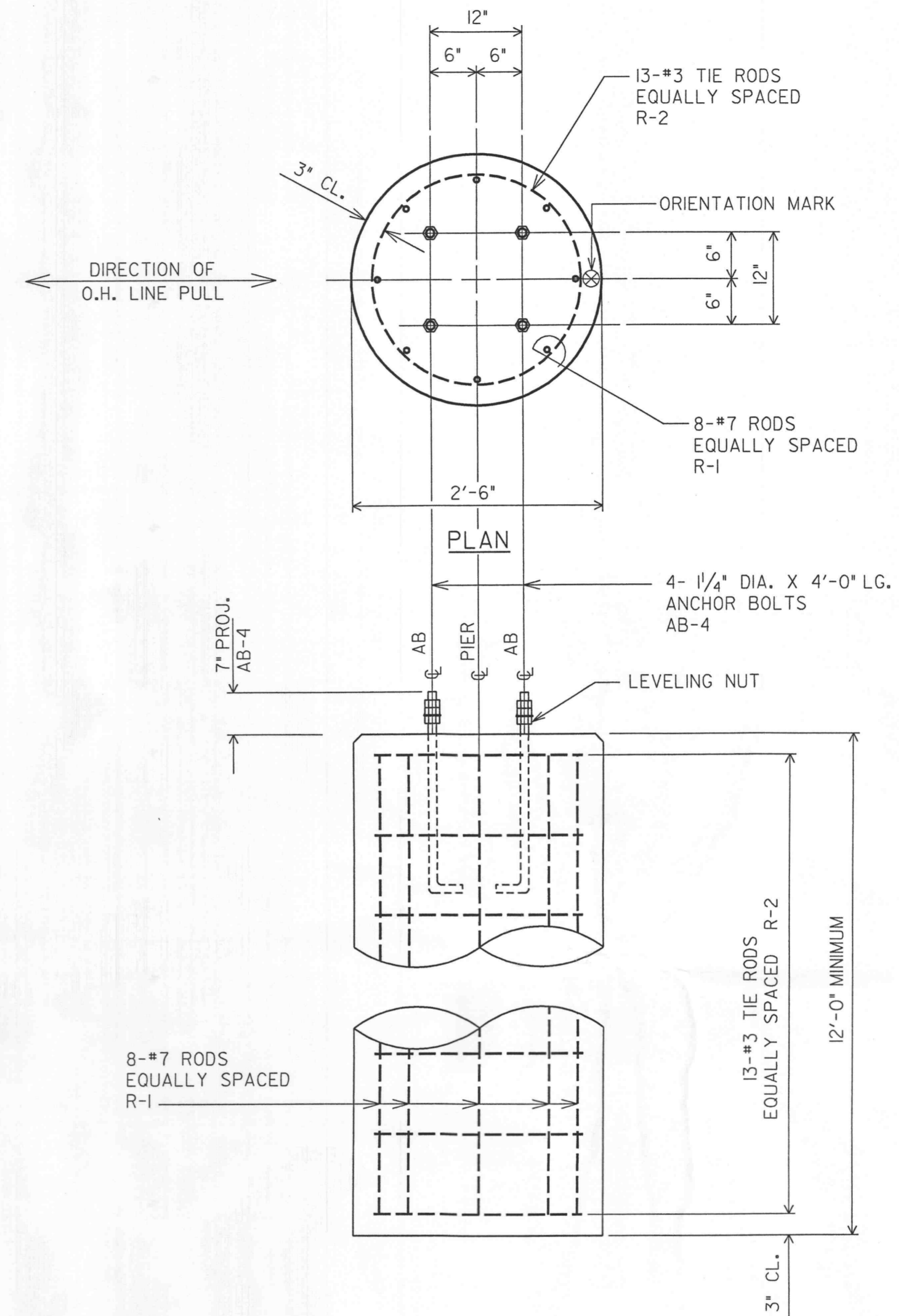
2



FRONT ELEVATION

34KV TRANSFORMER FOUNDATION

| REINFORCING REQUIRED FOR ONE FOUNDATION | | | | | |
|---|-----------|---------------|--------|-------|--------|
| MARK No. | No. REQ'D | SIZE | LENGTH | TYPE | SKETCH |
| RT-1 | 12 | #6 | 14'-6" | STR. | — |
| RT-2 | 20 | #9 | 14'-6" | STR. | — |
| RT-3 | 24 | #6 | 4'-6" | HOKED | — |
| RT-4 | 8 | #5 | 10" | STR. | — |
| RT-5 | 11 | #6 | 12'-6" | STR. | — |
| RT-6 | 16 | #9 | 12'-6" | STR. | — |
| RT-7 | 3 | HIGH CHAIR | 5 1/8" | | — |
| RT-8 | 3 | SLAB BOLSTERS | 3" | | — |
| | 4 | PULLING EYES | | | — |



34.5KV *V*SWITCH STRUCT. PIER DETAIL
 FOR STRUCTURE WITH O.H. LINE PULL (1000#)
 2 REQUIRED PER STRUCTURE

| REINFORCING REQUIRED FOUR PIER - TWO STRUCTURES | | | | | |
|---|-----------|-------------|----------|------|--------|
| MARK No. | No. REQ'D | SIZE | LENGTH | TYPE | SKETCH |
| R-1 | 32 | #7 | 11'-6" | STR. | — |
| R-2 | 52 | #3 | 24" DIA. | T3 | — |
| AB-4 | 16 | 1 1/4" DIA. | 4'-0" | MI | — |

NOTES:

1. REFERENCE MARKS ⊗ ARE USED TO ORIENT FOUNDATION. SEE FOUNDATION LOCATION PLAN.
2. CONCRETE SHALL HAVE A MINIMUM COMPRESSIVE STRENGTH OF 4000 P.S.I. AT 28 DAYS.
3. FOR TOP OF CONCRETE ELEVATION SEE FDN. LOC. PLAN.
4. IF SOLID ROCK IS ENCOUNTERED AT ANY DEPTH, THE DRILLING SHALL BE STOPPED, AND THE BELL SHALL BE OMITTED. BOULDERS AND SHALE ARE NOT CONSIDERED SOLID ROCK.
5. CHAMFER ALL EXPOSED EDGES.
6. REINFORCING STEEL SHALL BE ASTM A615 GR 60

FOR CONSTRUCTION
 C.I.O. NO.

FOUNDATION LOCATION PLAN 9443-Y-149195
 REINFORCING SCHEDULE 9443-Y-149196

NOTICE OF LIMITED RESPONSIBILITY
 THE RESPONSIBILITY OF THE UNDERSIGNED ENGINEER IS LIMITED TO THE DESIGN WORK SHOWN ON PROJECT DRAWINGS AND DOCUMENTS BEARING HIS/HER SEAL, SIGNATURE OR INITIALS. HE/SHE DOES NOT HAVE AUTHORITY OVER THE PROJECT AS A WHOLE. THE UNDERSIGNED DISCLAIMS ANY RESPONSIBILITY FOR WORK DONE UNDER SUBSEQUENT REVISIONS AND ANY OTHER DOCUMENTS ASSOCIATED WITH THE PROJECT WHICH DO NOT BEAR HIS/HER SEAL, SIGNATURE OR INITIALS.



PREPARED FOR **Ameren UE**

REV. 0 SEALED BY **THOMAS LEE HOLLENKAMP**
 DRAWN BY **M.S.M.**
 CK'D. NOT
 SUPV. SAH
 APPD. C.J.G.
 LOCATION 004726
 NUMBER E-18247

STRUCTURE - CONCRETE DETAIL
34KV TRANSFORMER FOUNDATION
13' X 15' PAD AND
34.5KV *V*SWITCH STRUCT. PIER DETAIL

CLASS 04050
 WINGHAVEN SUBSTATION
 ST. LOUIS, MISSOURI
 9443-Y-149197
 REV. 0

3

2

31-13-18 Rev. P-05