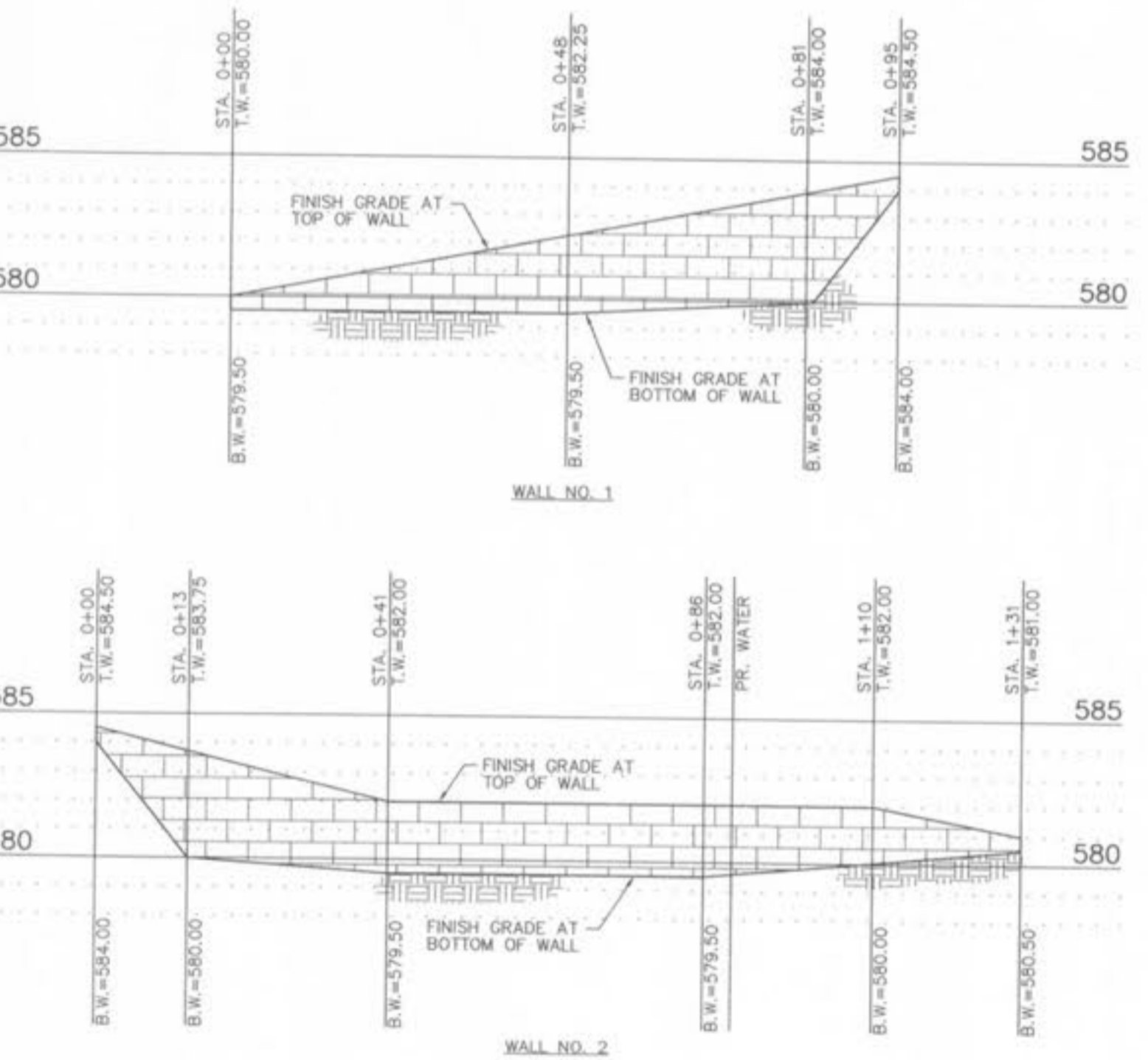


GENERAL NOTES

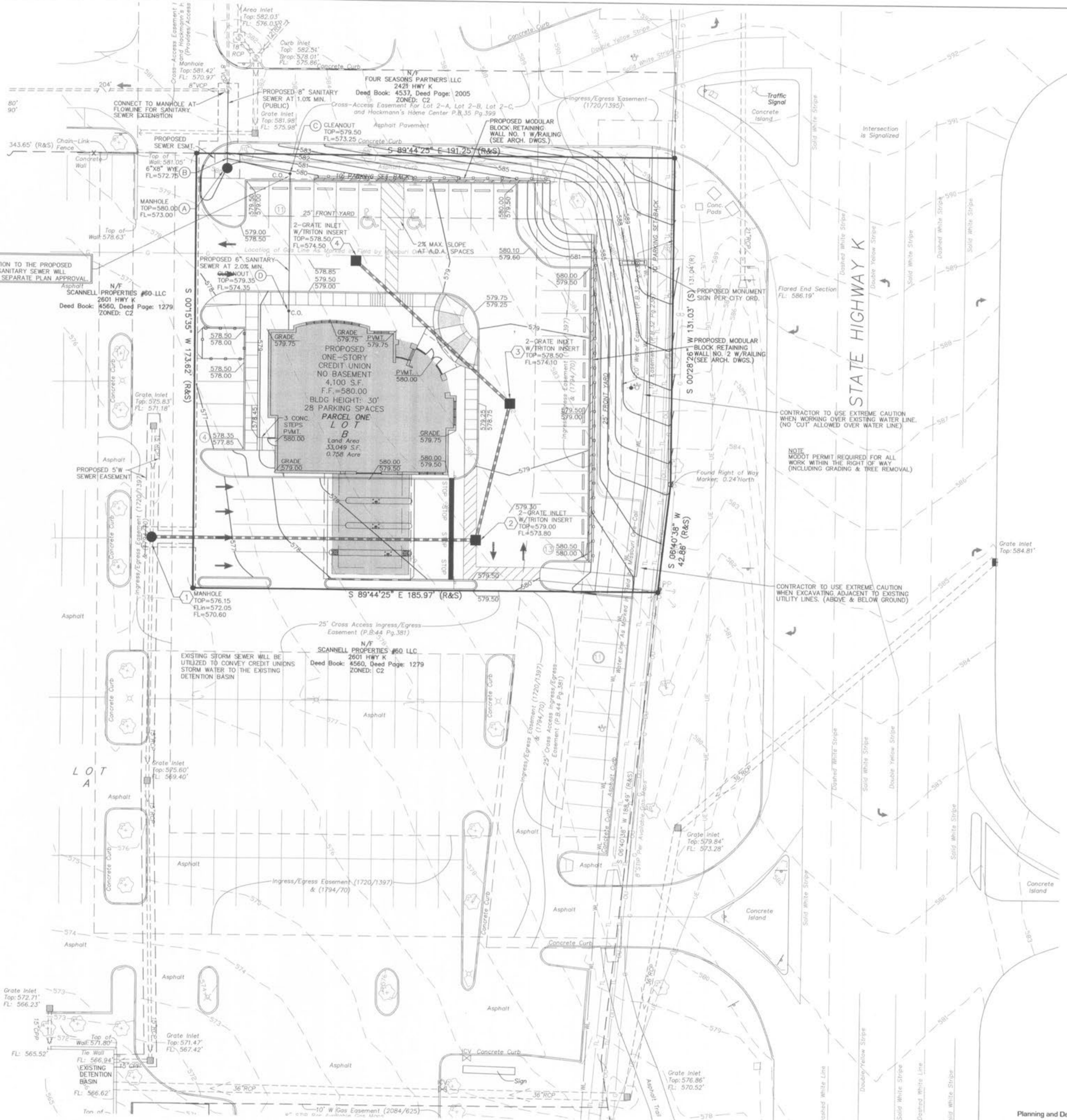
- 1. UNDERGROUND FACILITIES, STRUCTURES AND UTILITIES HAVE BEEN PLOTTED FROM AVAILABLE SURVEYS, RECORDS AND INFORMATION, AND, THEREFORE DO NOT NECESSARILY REFLECT THE ACTUAL EXISTENCE, NON-EXISTENCE, SIZE, TYPE, NUMBER, OR LOCATION OF THESE FACILITIES, STRUCTURES AND UTILITIES. THE CONTRACTOR SHALL BE RESPONSIBLE FOR VERIFYING THE ACTUAL LOCATION OF ALL UNDERGROUND FACILITIES, STRUCTURES, AND UTILITIES, EITHER SHOWN OR NOT SHOWN ON THESE PLANS. THE UNDERGROUND FACILITIES, STRUCTURES, AND UTILITIES SHALL BE LOCATED IN THE FIELD PRIOR TO ANY GRADING, EXCAVATION OR CONSTRUCTION OF IMPROVEMENTS. THESE PROVISIONS SHALL IN NO WAY ABSOLVE ANY PARTY FROM COMPLYING WITH THE UNDERGROUND FACILITY SAFETY AND DAMAGE PREVENTION ACT, CHAPTER 319 RSMO.
- 2. CONTRACTOR SHALL SCHEDULE A UTILITY MEETING WITH REPRESENTATIVES OF ALL UTILITY COMPANIES PRIOR TO BIDDING AND CONSTRUCTION.
- 3. THE CONTRACTOR SHALL BE RESPONSIBLE FOR COORDINATING CONSTRUCTION ACTIVITIES WITH POTENTIAL CONFLICTS AND/OR DISRUPTION OF SERVICE WITH THE RESPECTIVE UTILITY COMPANIES, FOR SEWER AND UTILITY INSTALLATIONS AND ALL OTHER ON-SITE ACTIVITIES.
- 4. THE CONTRACTOR IS RESPONSIBLE FOR COORDINATING CONSTRUCTION PARKING WITH THE CITY OF FALLON AND WITH THE OWNER.
- 5. CONTRACTOR SHALL VERIFY EXISTING UTILITY SERVICES ARE CAPPED OR REMOVED AND/OR ABANDONED AS REQUIRED PER THE SPECIFICATIONS OF THE APPROPRIATE GOVERNING AGENCY.
- 6. PROVIDE PROTECTIONS NECESSARY TO PREVENT DAMAGE TO EXISTING IMPROVEMENTS AND UTILITIES INDICATED TO REMAIN IN PLACE.
- 7. PROTECT IMPROVEMENTS ON ADJOINING PROPERTIES AND ON OWNER'S PROPERTY.
- 8. RESTORE DAMAGED IMPROVEMENTS TO THEIR ORIGINAL CONDITION AND GRADES, AS ACCEPTABLE TO PROPERTY OWNERS.
- 9. CONTRACTOR SHALL COORDINATE ALL PAVEMENT/HARDSCAPE INSTALLATION WITH PROPOSED UTILITY INSTALLATIONS TO AVOID THE CONDITION WHERE NEW PAVEMENT IS SAWCUT OR REMOVED FOR A REQUIRED UTILITY INSTALL. CONDUIT LOCATIONS AND UTILITY SERVICES SHALL BE REVIEWED BY CONTRACTOR, PRIOR TO PAVEMENT/HARDSCAPE INSTALLATIONS.
- 10. WALKWAYS ALONG THE ACCESSIBLE ROUTE SHALL NOT HAVE A SLOPE EXCEEDING 1"V:20" H. SLOPES GREATER THAN 1"V:20" MUST BE DESIGNED AS A RAMP.
- 11. SIDEWALKS, CURB RAMPS, RAMPS AND ACCESSIBLE PARKING SPACES SHALL BE CONSTRUCTED IN ACCORDANCE WITH THE CURRENT APPROVED "AMERICANS WITH DISABILITIES ACT ACCESSIBILITY GUIDELINES" (ADAAG) ALONG WITH THE REQUIRED GRADES, CONSTRUCTION MATERIALS, SPECIFICATIONS AND SIGNAGE. IF ANY CONFLICT OCCURS BETWEEN THE ADAAG GUIDELINES AND THE INFORMATION ON THE PLANS, THE ADAAG GUIDELINES SHALL TAKE PRECEDENCE AND THE CONTRACTOR SHALL NOTIFY THE PROJECT ENGINEER PRIOR TO ANY CONSTRUCTION.
- 12. TRAFFIC CONTROL IS TO BE PER MODOT OR MUTCD WHICHEVER IS MORE STRINGENT.
- 13. OCCUPANCY PERMIT CANNOT BE OBTAINED UNTIL THE SITE IS CONNECTED TO THE CITY'S SEWER SYSTEM OR ANOTHER SEWAGE DISPOSAL SYSTEM AS APPROVED BY THE CITY.

RETAINING WALL

SCALE: H:1"=20', V:1"=5'
 LEGEND:
 TW = GRADE AT TOP OF WALL
 BW = GRADE AT BOTTOM OF WALL



- NOTES:
- 1.) REFER TO THIS DRAWING FOR WALL PROFILE AND HEIGHT ONLY. DESIGN OF WALL SHALL BE BY OTHERS.
 - 2.) TYPE OF WALL TO BE DETERMINED BY OWNER AND ARCHITECT. RAILING TYPE, COLOR/STYLE, ETC. TO BE COORDINATED WITH ARCHITECT.
 - 3.) STRUCTURAL CALCULATIONS TO BE PROVIDED BY WALL MANUFACTURER OR STRUCTURAL ENGINEER. PERMITS FOR WALL TO BE OBTAINED BY CONTRACTOR.
 - 4.) THE WALL MANUFACTURER SHALL OBTAIN A COPY OF THE GEOTECHNICAL REPORT IF ONE HAS BEEN PREPARED FOR THIS PROJECT AND COMPLY WITH THE REQUIREMENTS OUTLINED IN REPORT.



CONTRACTOR TO USE EXTREME CAUTION WHEN WORKING OVER EXISTING WATER LINE. (NO "CUT" ALLOWED OVER WATER LINE.)

NOTE: MODOT PERMIT REQUIRED FOR ALL WORK WITHIN THE RIGHT OF WAY (INCLUDING GRADING & TREE REMOVAL)

CONTRACTOR TO USE EXTREME CAUTION WHEN EXCAVATING ADJACENT TO EXISTING UTILITY LINES. (ABOVE & BELOW GROUND)



CEDC
 CIVIL ENGINEERING
 DESIGN CONSULTANTS

11402 Gravois Road
 Suite 100
 Saint Louis, Missouri 63126
 314.729.1400
 Fax: 314.729.1404
 www.cedc.net

Improvement Plans
American Eagle Credit Union
 2531 Highway K
 O'Fallon, Missouri 63368

Proj. #	0708
No. Description	Date
City Submittal	10/08/07
per City	11/14/07
Permit Set	01/23/08
per City	04/25/08
per City	06/30/08

Site & Grading
 Plan

C4

Planning and Development No. 2507
 Planning and Zoning Commission
 Approval - October 4, 2007

OF 9