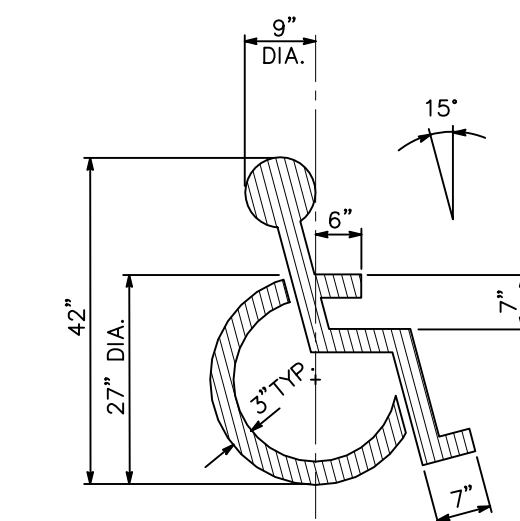
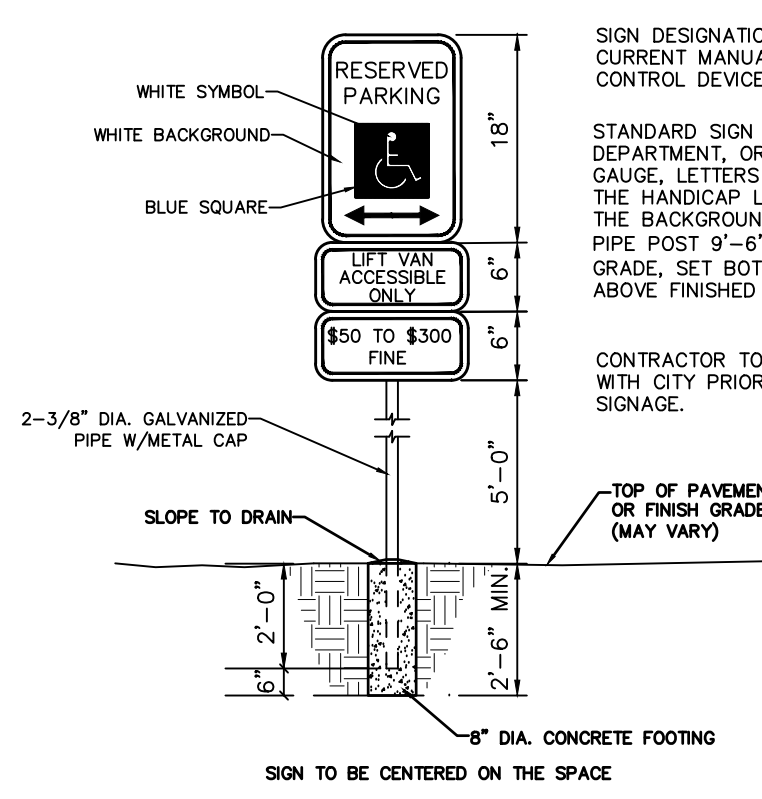


CONCRETE CURB DETAIL
NOT TO SCALE

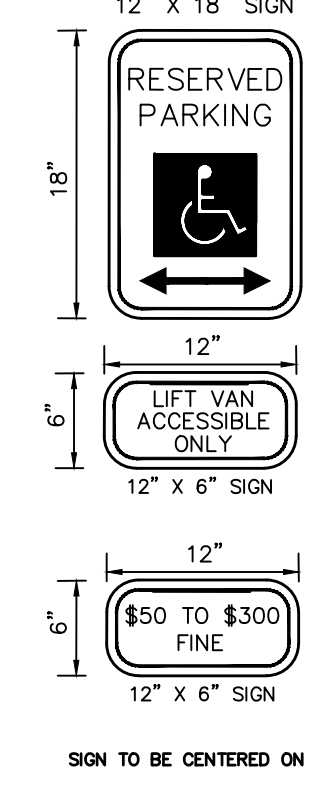


PAINTED HANDICAPPED PARKING SYMBOL
NOT TO SCALE



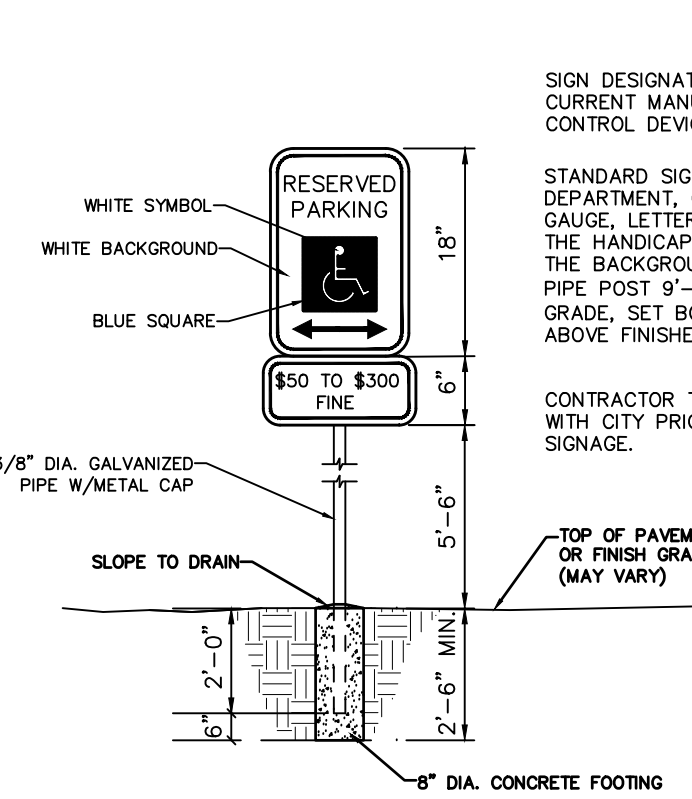
SIGN DESIGNATIONS ARE FROM THE CURRENT MANUAL ON UNIFORM TRAFFIC CONTROL DEVICES.
STANDARD SIGN FACE, STANDARD HIGHWAY DEPARTMENT, OR CITY STREET DEPARTMENT GAUGE. LETTERS AND BORDERS ARE GREEN. THE HANDICAP LOGO SQUARE IS BLUE AND THE BACKGROUND IS WHITE. GALVANIZED PIPE POST 9'-6" LONG, SET 2'-0" INTO GRADE. SET BOTTOM OF "FINE" SIGN 5'-0" ABOVE FINISHED GRADE.
CONTRACTOR TO VERIFY ALL SIGNAGE WITH CITY PRIOR TO ORDERING ALL SIGNAGE.

8" DIA. CONCRETE FOOTING
SIGN TO BE CENTERED ON THE SPACE



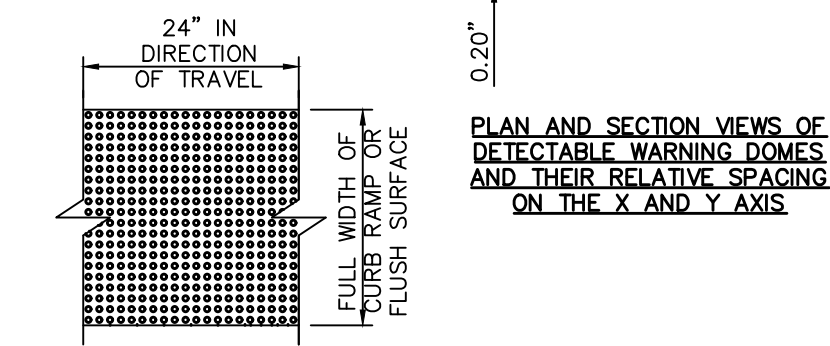
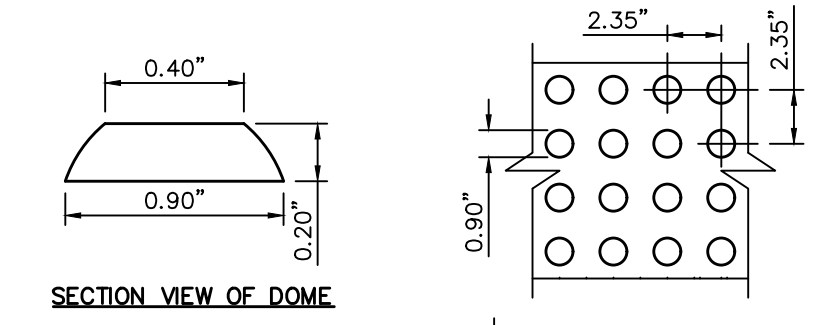
SIGN DESIGNATIONS ARE FROM THE CURRENT MANUAL ON UNIFORM TRAFFIC CONTROL DEVICES.
STANDARD SIGN FACE, STANDARD HIGHWAY DEPARTMENT, OR CITY STREET DEPARTMENT GAUGE. LETTERS AND BORDERS ARE GREEN. THE HANDICAP LOGO SQUARE IS BLUE AND THE BACKGROUND IS WHITE.
CONTRACTOR TO VERIFY ALL SIGNAGE WITH CITY PRIOR TO ORDERING ALL SIGNAGE.

8" DIA. CONCRETE FOOTING
SIGN TO BE CENTERED ON THE SPACE



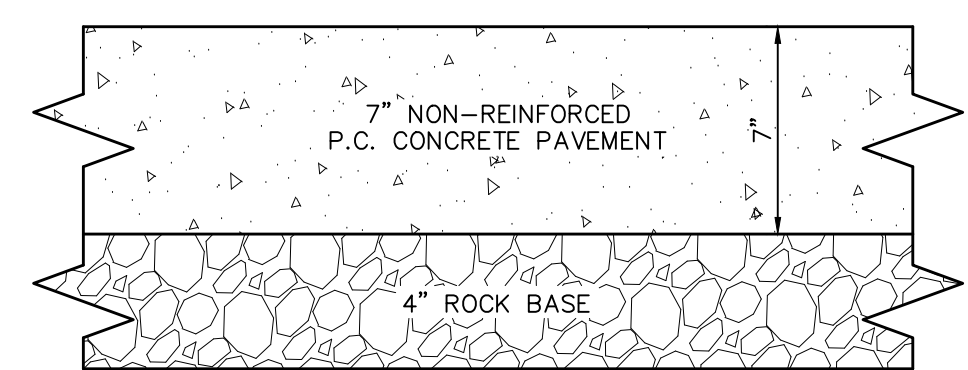
SIGN DESIGNATIONS ARE FROM THE CURRENT MANUAL ON UNIFORM TRAFFIC CONTROL DEVICES.
STANDARD SIGN FACE, STANDARD HIGHWAY DEPARTMENT, OR CITY STREET DEPARTMENT GAUGE. LETTERS AND BORDERS ARE GREEN. THE HANDICAP LOGO SQUARE IS BLUE AND THE BACKGROUND IS WHITE. GALVANIZED PIPE POST 9'-6" LONG, SET 2'-0" INTO GRADE. SET BOTTOM OF "FINE" SIGN 5'-6" ABOVE FINISHED GRADE.
CONTRACTOR TO VERIFY ALL SIGNAGE WITH CITY PRIOR TO ORDERING ALL SIGNAGE.

8" DIA. CONCRETE FOOTING
SIGN TO BE CENTERED ON THE SPACE



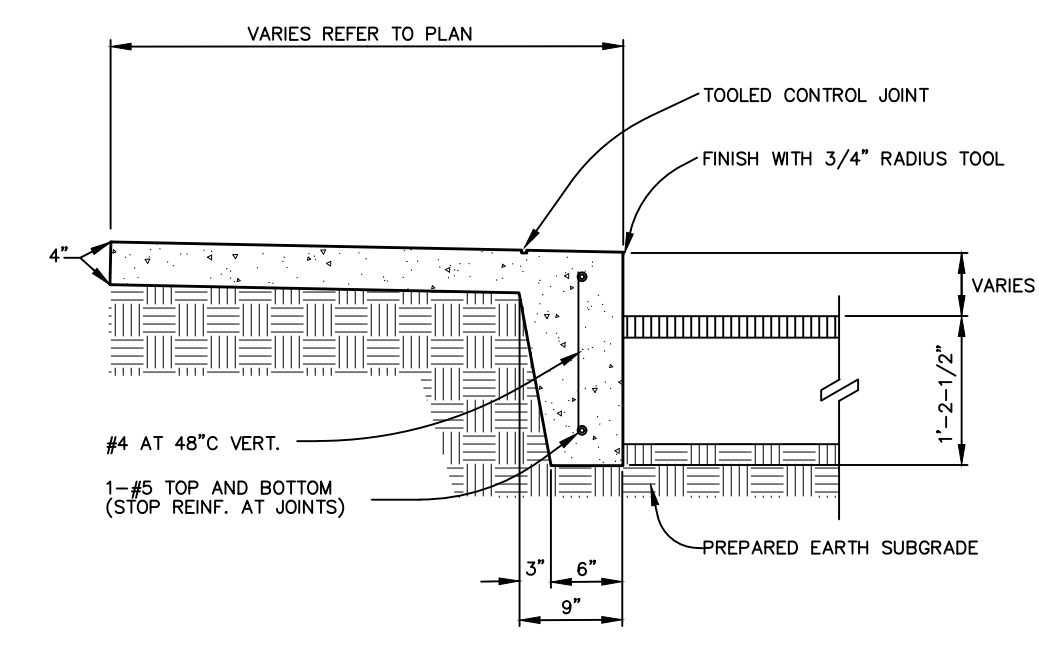
PLAN VIEW OF A DETECTABLE WARNING SURFACE SHOWING DOMES ALIGNED IN ROWS, NOT SKEWED DIAGONALLY.

TYPICAL DETAIL OF DETECTABLE WARNING SURFACE
NOT TO SCALE

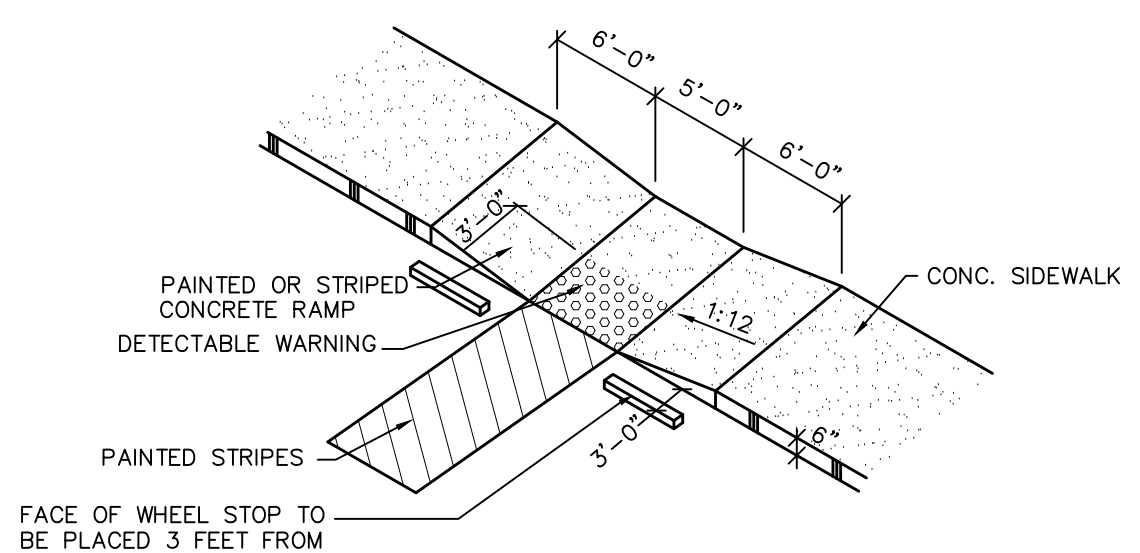


CONCRETE PAVEMENT DETAIL
NOT TO SCALE

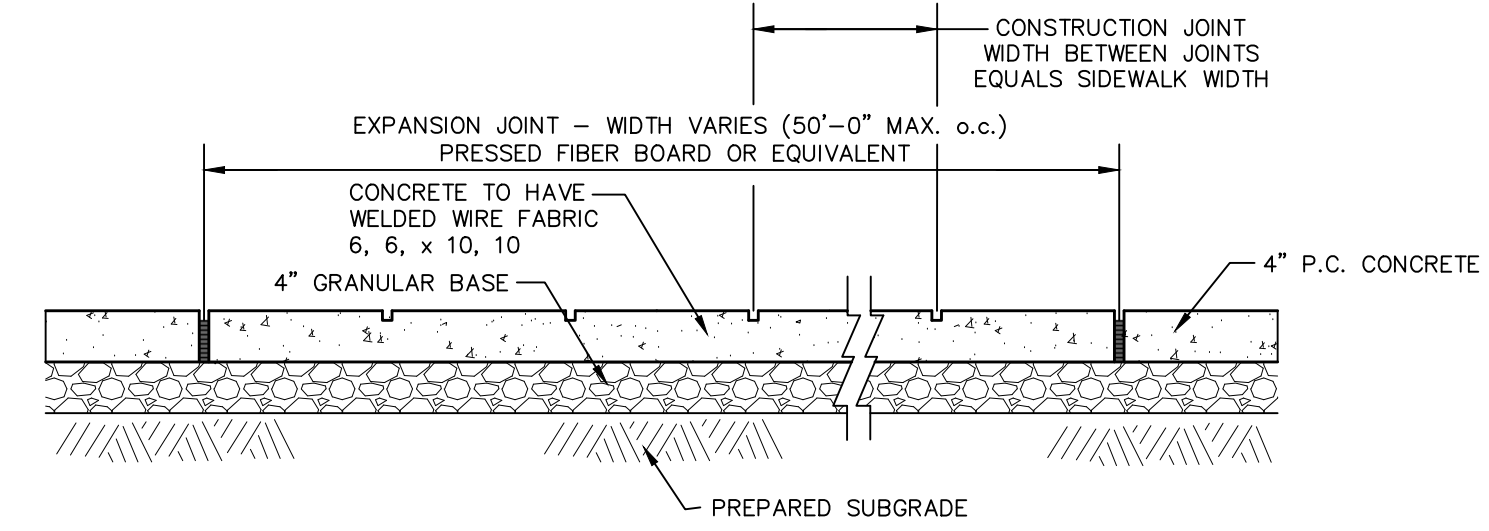
ALL NON-REINFORCED CONCRETE SHALL BE 4,000 PSI AT 28 DAYS



TURNED DOWN CONCRETE WALK
NOT TO SCALE

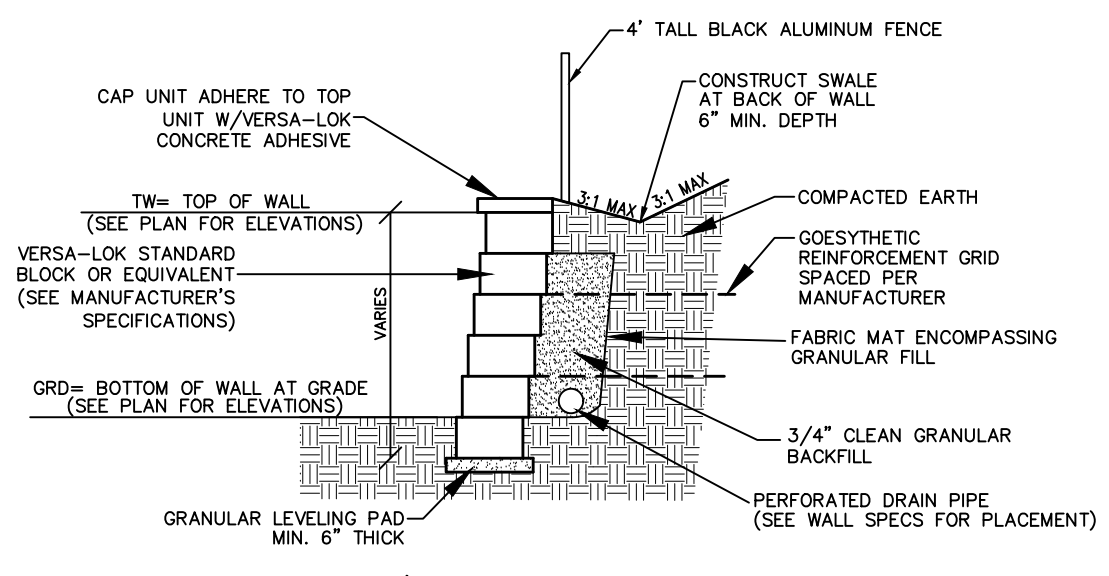


HANDICAPPED RAMP DETAIL
NOT TO SCALE



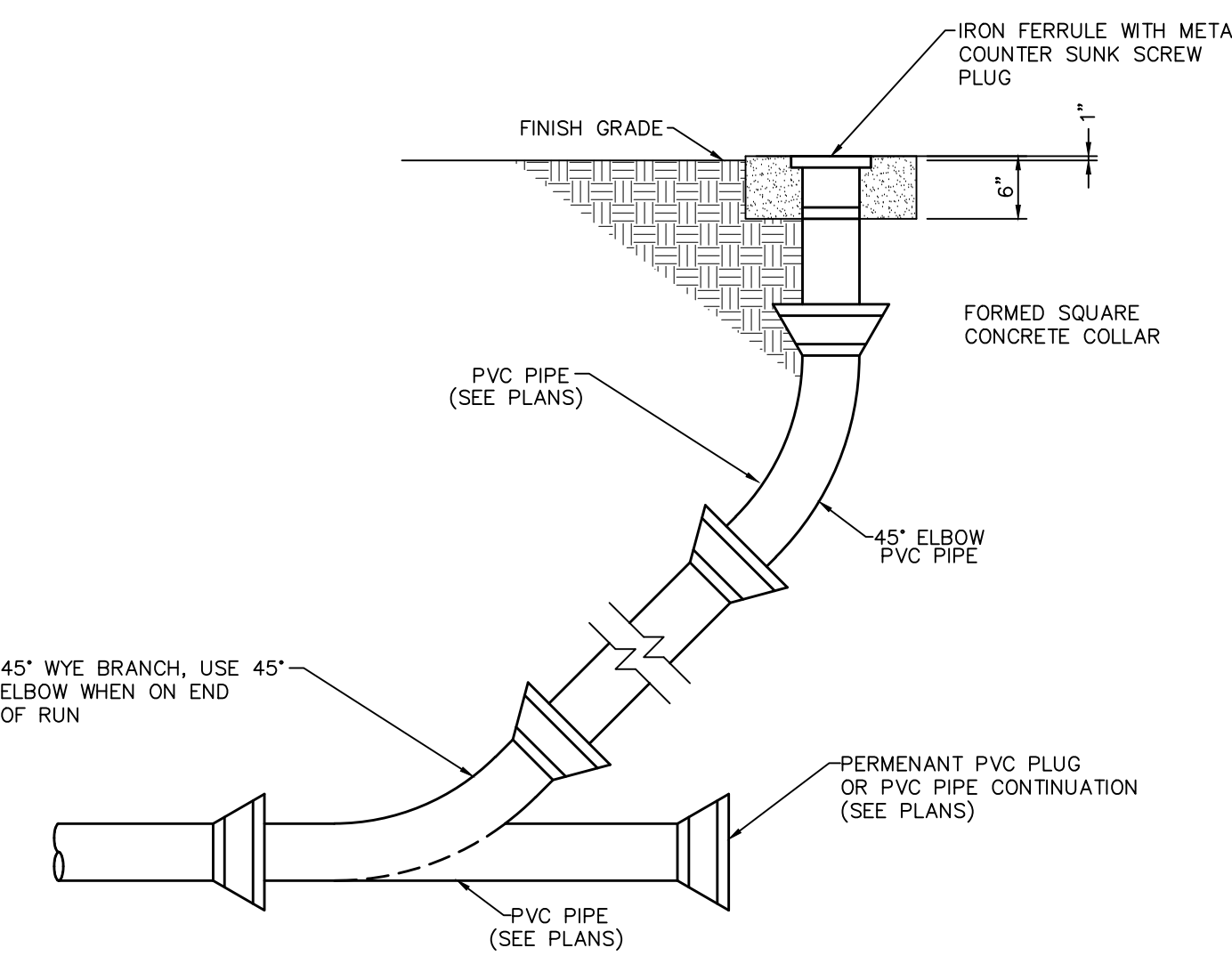
CONCRETE SIDEWALK WITH BASE DETAIL
NOT TO SCALE

NOTE: WALL HEIGHT IS ACCORDING TO THE TW (TOP OF WALL) AND GRD (AT GRADE) ELEVATIONS SHOWN ON THE PLANS. ANY BLOCK OR FOOTING BELOW THE GRD ELEVATION SHOWN ARE DEPENDANT ON THE CONTRACTOR AND SELECTED WALL MANUFACTURER/DESIGNER AND SHOULD BE INCLUDED IN THE CONTRACTORS UNIT PRICE FOR THE WALL.

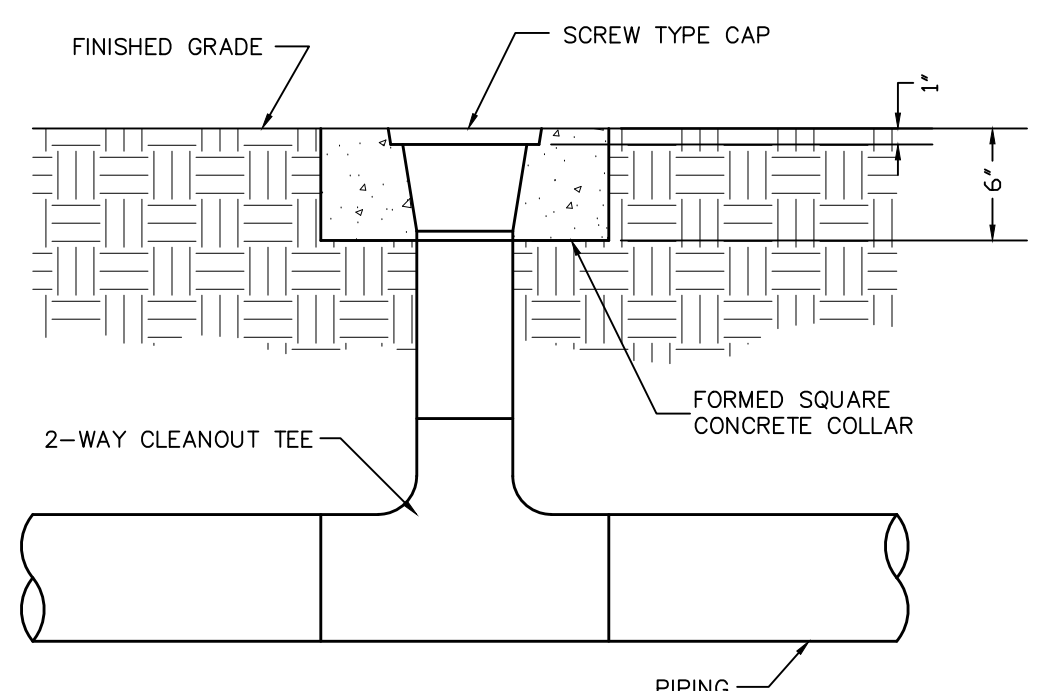


MODULAR BLOCK RETAINING WALL
NOT TO SCALE

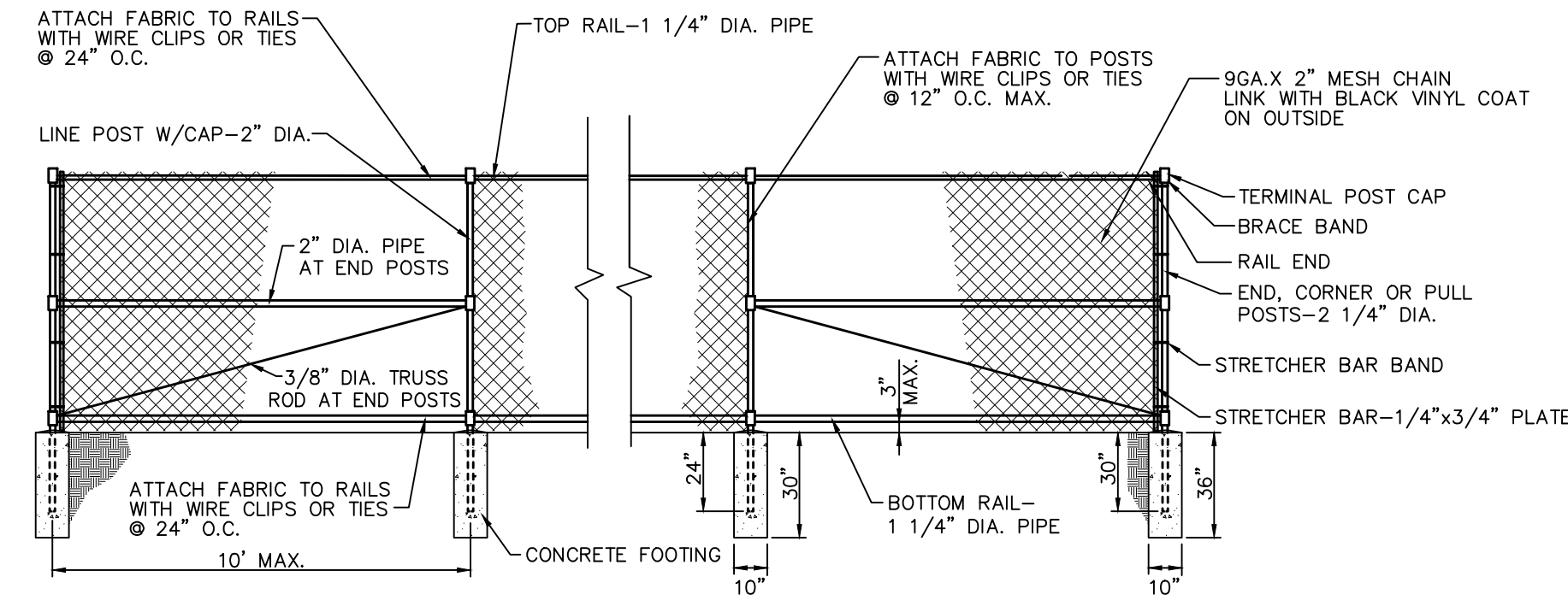
NOTE: WALL ELEVATIONS SHOWN REFER TO EXPOSED WALL AND ANY BLOCK OR FOOTING BELOW GRADE WILL BE DETERMINED BY WALL DESIGN. THE CONTRACTOR SHALL SELECT A WALL MANUFACTURER AND WILL BE RESPONSIBLE FOR THE DESIGN OF THE WALL BASED ON SITE CHARACTERISTICS AND CITY STANDARDS. WALL DESIGN SHALL BE SUBMITTED TO THE CITY FOR A WALL PERMIT INDEPENDENT OF THE PERMIT ASSOCIATED WITH THIS SET OF PLANS.



DOWNSPOUT CLEANOUT
NOT TO SCALE

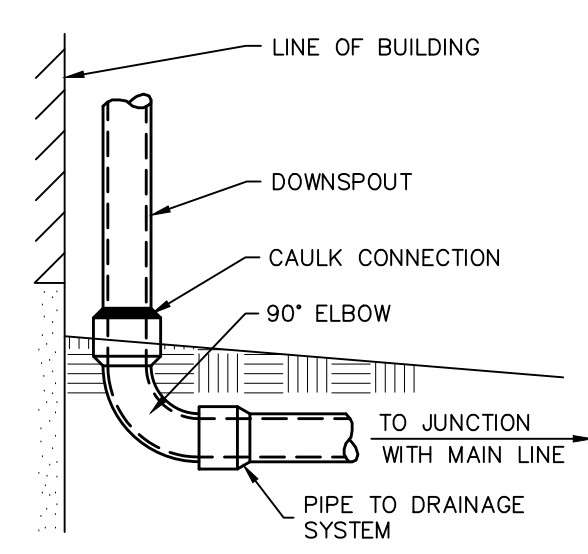


2-WAY CLEANOUT
NOT TO SCALE

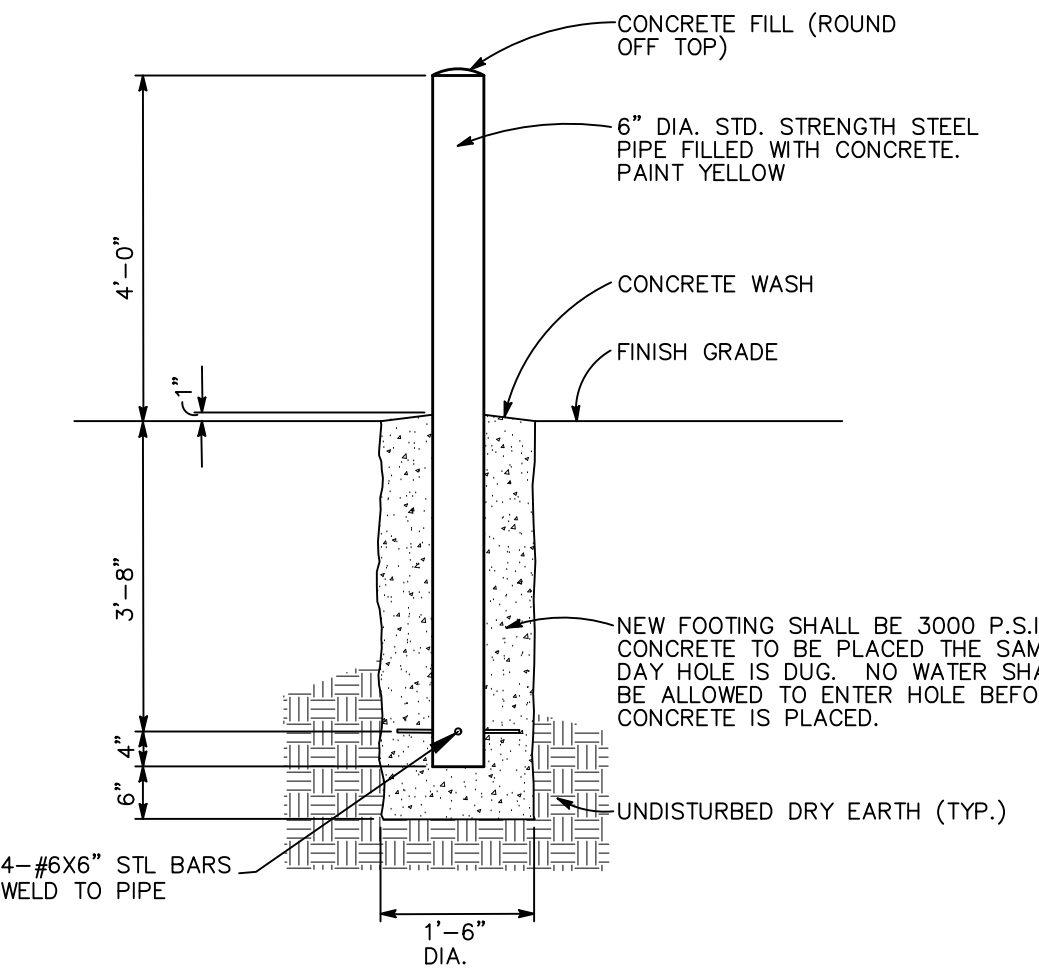


48" H. BLACK VINYL COATED CHAINLINK FENCE
NOT TO SCALE

ALL FENCE MATERIALS AND HARDWARE SHALL BE IN ACCORDANCE WITH MDDOT SPECIFICATIONS



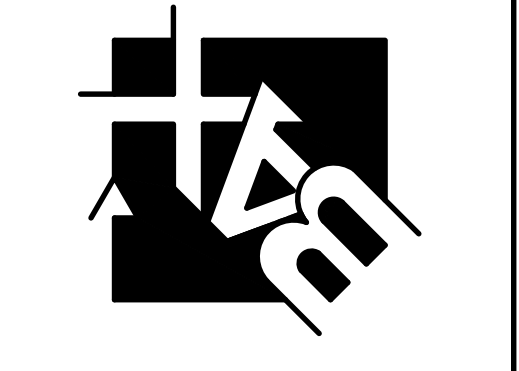
DOWNSPOUT DETAIL
NOT TO SCALE



PIPE BOLLARD DETAIL
NOT TO SCALE

PROJECT TITLE:
Anjon Manufacturing
South Cool Springs Road

ENGINEERING
PLANNING
SURVEYING
221 Point View Blvd.
St. Charles, MO 63301
636-928-5562
FAX 928-1718



DISCLAIMER OF RESPONSIBILITY
I hereby specify that the documents intended to be authorized by my seal are limited to this sheet, and I hereby disclaim any responsibility for all other drawings, specifications, estimates, reports or other documents or instruments relating to or intended to be used for any part or parts of the architectural or engineering project or survey.

CLIFFORD L. HEITMANN
CIVIL ENGINEER
E29817
Copyright 2022
Box Engineering Company, Inc.
Authority No. 000655
All Rights Reserved

REVISIONS	
06-09-22	CITY COMMENTS
06-27-22	CITY COMMENTS
07-06-22	CITY COMMENTS
08-23-22	CITY COMMENTS
09-16-22	CITY COMMENTS
11-22-22	CLIENT REVISIONS
12-01-22	CITY COMMENTS
01-25-23	CLIENT REVISIONS

Owner:
Lottes Springs, LLC
1000 Liberty Industrial Drive
O'Fallon, MO 63366
800-553-5605

P+Z No. #21-011066
Approval Date: 02-07-22

City No.

Page No.

C11

DETAILS

Issue Date: 04/01/2022