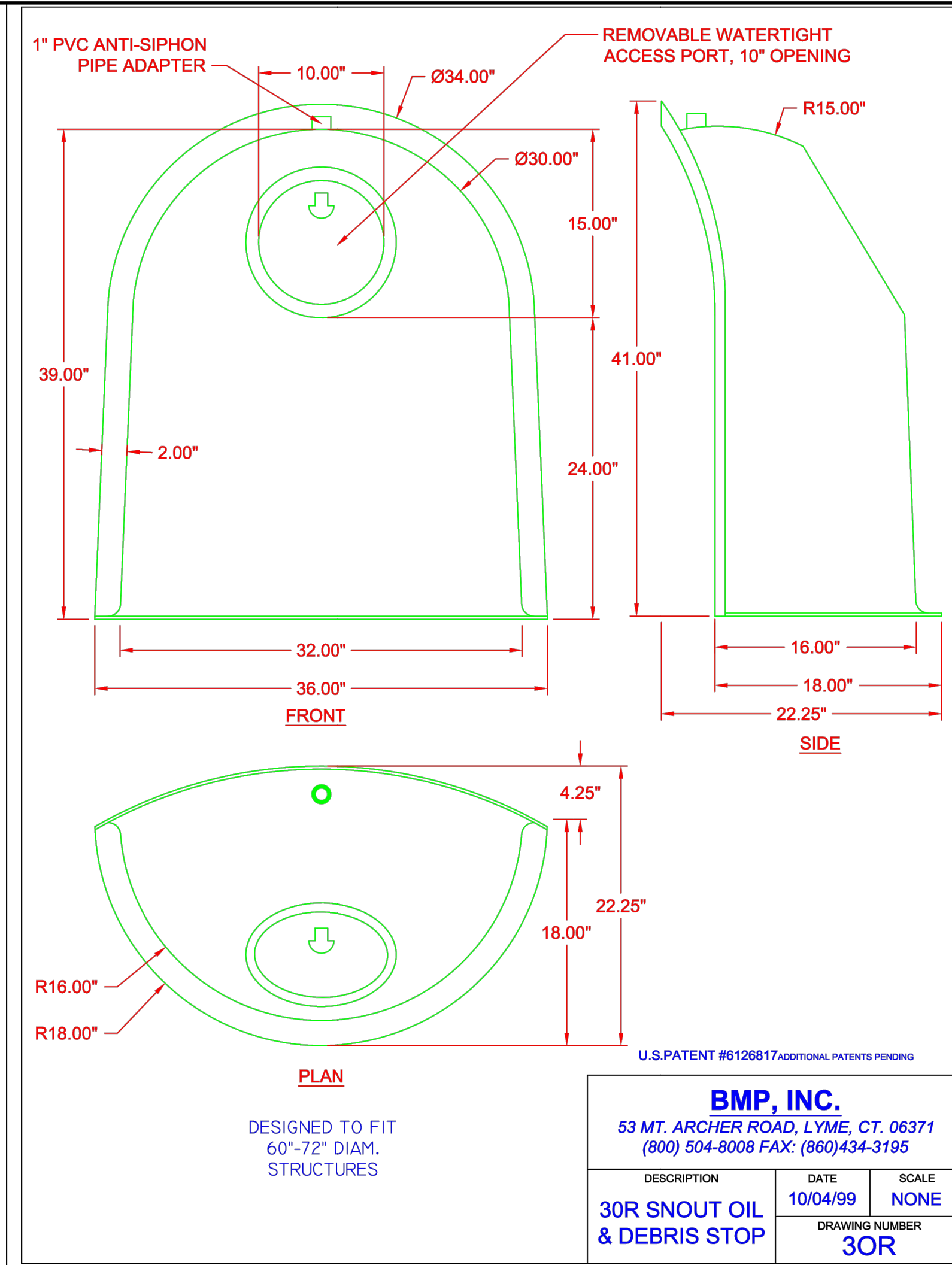


U.S. PATENT #6126817 ADDITIONAL PATENTS PENDING

BMP, INC.
53 MT. ARCHER ROAD, LYME, CT. 06371
(800) 504-8008 FAX: (860) 434-3195

DESCRIPTION	DATE	SCALE
18R SNOUT OIL & DEBRIS STOP	09/06/99	NONE
DRAWING NUMBER	18R	

DESIGNED TO FIT 48"-60" DIAM. STRUCTURES

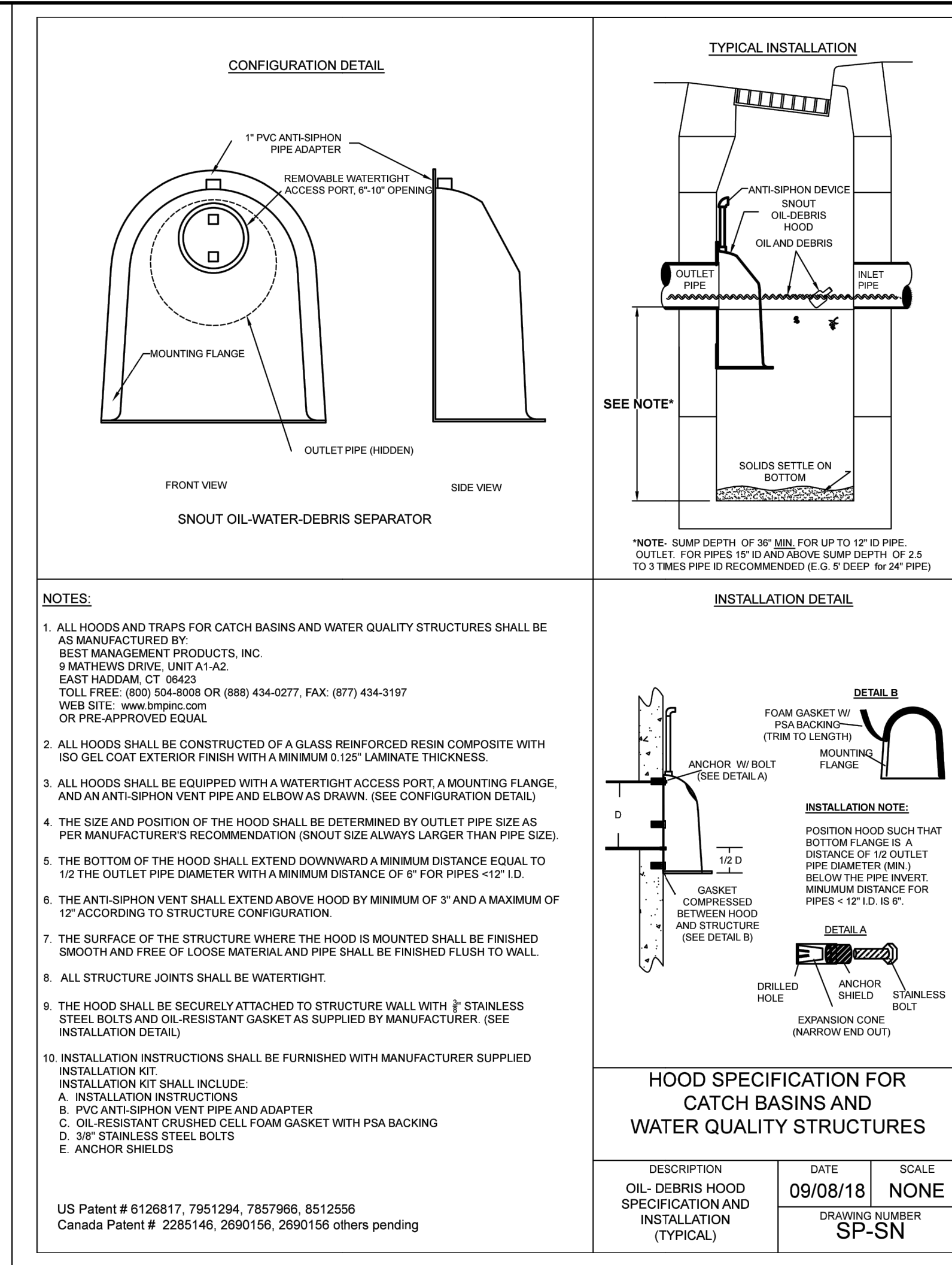


U.S. PATENT #6126817 ADDITIONAL PATENTS PENDING

BMP, INC.
53 MT. ARCHER ROAD, LYME, CT. 06371
(800) 504-8008 FAX: (860) 434-3195

DESCRIPTION	DATE	SCALE
30R SNOUT OIL & DEBRIS STOP	10/04/99	NONE
DRAWING NUMBER	30R	

DESIGNED TO FIT 60"-72" DIAM. STRUCTURES



NOTES:

- ALL HOODS AND TRAPS FOR CATCH BASINS AND WATER QUALITY STRUCTURES SHALL BE AS MANUFACTURED BY BEST MANAGEMENT PRODUCTS, INC. 9 MATHEWS DRIVE UNIT A1-A2 EAST HADDAM CT 06423 TOLL FREE: (800) 504-8008 OR (888) 434-0277, FAX: (877) 434-3197 WEB SITE: www.bmpinc.com OR PRE-APPROVED EQUAL.
- ALL HOODS SHALL BE CONSTRUCTED OF A GLASS REINFORCED RESIN COMPOSITE WITH ISO GEL COAT EXTERIOR FINISH WITH A MINIMUM 0.125" LAMINATE THICKNESS.
- ALL HOODS SHALL BE EQUIPPED WITH A WATERTIGHT ACCESS PORT, A MOUNTING FLANGE, AND AN ANTI-SIPHON VENT PIPE AND ELBOW AS DRAWN. (SEE CONFIGURATION DETAIL)
- THE SIZE AND POSITION OF THE HOOD SHALL BE DETERMINED BY OUTLET PIPE SIZE AS PER MANUFACTURER'S RECOMMENDATION (SNOUT SIZE ALWAYS LARGER THAN PIPE SIZE).
- THE BOTTOM OF THE HOOD SHALL EXTEND DOWNWARD A MINIMUM DISTANCE EQUAL TO 1/2 THE OUTLET PIPE DIAMETER WITH A MINIMUM DISTANCE OF 6" FOR PIPES <12" I.D.
- THE ANTI-SIPHON VENT SHALL EXTEND ABOVE HOOD BY MINIMUM OF 3" AND A MAXIMUM OF 12" ACCORDING TO STRUCTURE CONFIGURATION.
- THE SURFACE OF THE STRUCTURE WHERE THE HOOD IS MOUNTED SHALL BE FINISHED SMOOTH AND FREE OF LOOSE MATERIAL AND PIPE SHALL BE FINISHED FLUSH TO WALL.
- ALL STRUCTURE JOINTS SHALL BE WATERTIGHT.
- THE HOOD SHALL BE SECURELY ATTACHED TO STRUCTURE WALL WITH 1/2" STAINLESS STEEL BOLTS AND OIL RESISTANT GASKET AS SUPPLIED BY MANUFACTURER. (SEE INSTALLATION DETAIL)
- INSTALLATION INSTRUCTIONS SHALL BE FURNISHED WITH MANUFACTURER SUPPLIED INSTALLATION KIT. INSTALLATION KIT SHALL INCLUDE: A. PVC ANTI-SIPHON VENT PIPE AND ADAPTER B. OIL-RESISTANT CRUSHED CELL FOAM GASKET WITH PSA BACKING C. 3/8" STAINLESS STEEL BOLTS E. ANCHOR SHIELDS

US Patent # 6126817, 7951284, 7857966, 8512556
Canada Patent # 2285146, 2690156, 2690156 others pending

INSTALLATION DETAIL

HOOD SPECIFICATION FOR CATCH BASINS AND WATER QUALITY STRUCTURES

DESCRIPTION	DATE	SCALE
OIL-DEBRIS HOOD SPECIFICATION AND INSTALLATION (TYPICAL)	09/08/18	NONE
DRAWING NUMBER	SP-SN	

PROJECT TITLE:
Anjon Manufacturing
South Cool Springs Road

ENGINEERING FIRM:
CLIFFORD L. HEITMANN CIVIL ENGINEER
221 Point View Blvd.
St. Charles, MO 63301
636-928-5562
FAX 928-1718

DISCLAIMER OF RESPONSIBILITY:
I hereby specify that the documents intended to be authorized by my seal are limited to this sheet, and I hereby disclaim any responsibility for all other Drawings, Specifications, Estimates, Reports or other documents or instruments relating to or intended to be used for any part or parts of the architectural or engineering project or survey.

ENGINEER SEAL DOES NOT APPLY TO MSD, NYLOPLAST OR BMP DETAILS

Copyright 2022
Box Engineering Company, Inc.
Authority No. 000655
All Rights Reserved

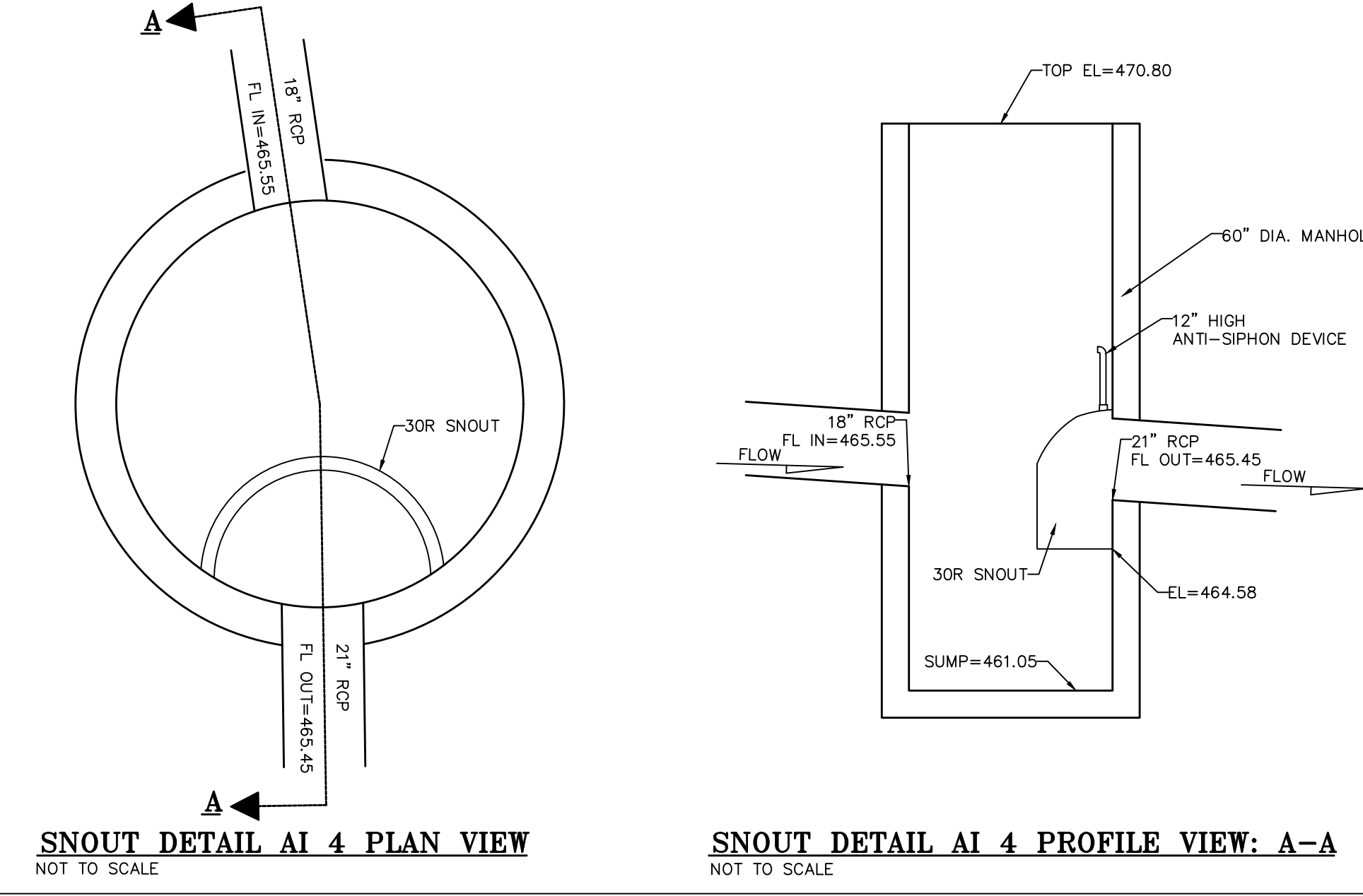
REVISIONS

06-09-22	CITY COMMENTS
06-27-22	CITY COMMENTS
07-06-22	CITY COMMENTS
08-23-22	CITY COMMENTS
09-16-22	CITY COMMENTS
11-22-22	CLIENT REVISIONS
12-01-22	CITY COMMENTS
01-25-23	CLIENT REVISIONS

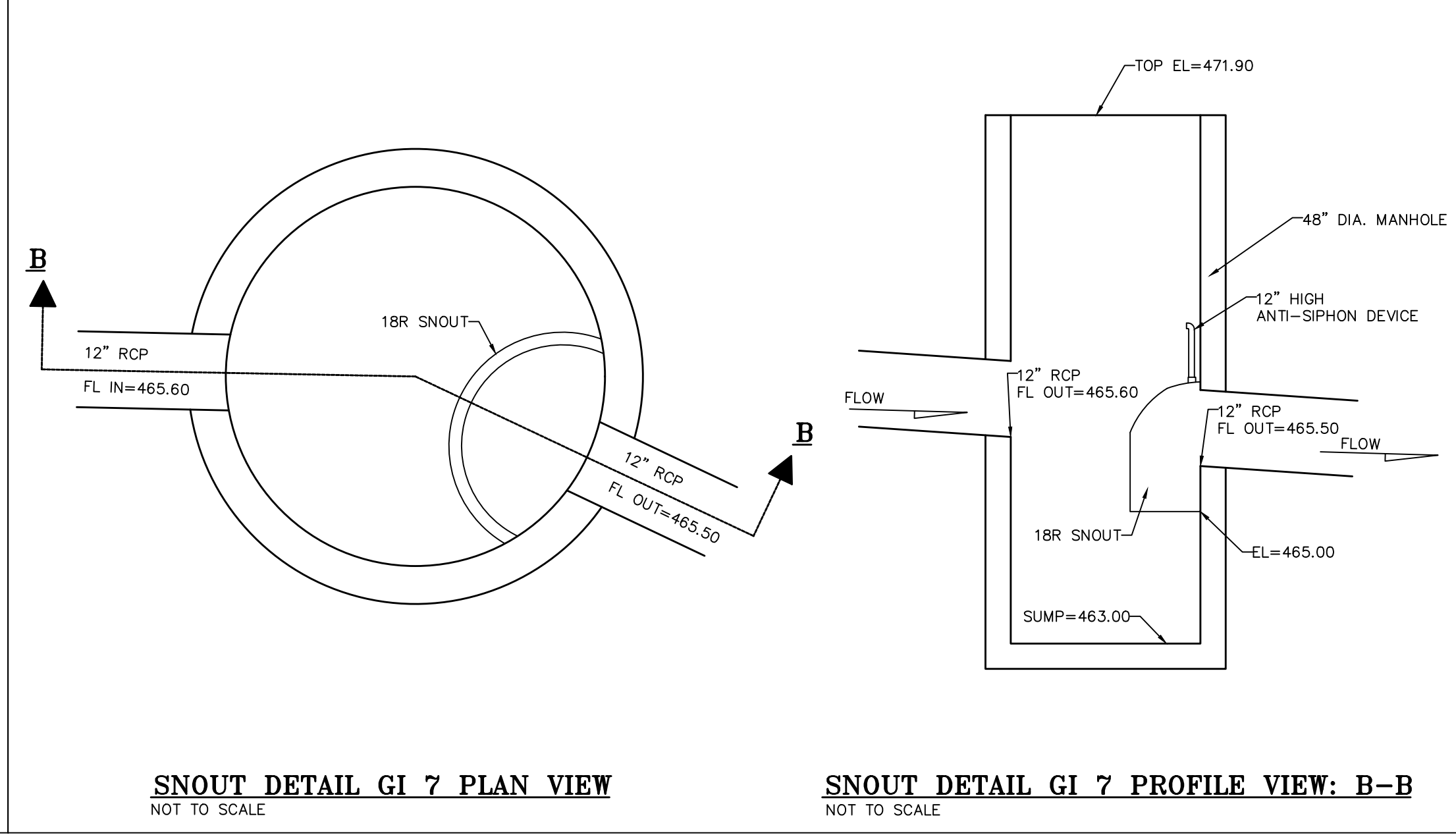
Owner:
Lottes Springs, LLC
1000 Liberty Industrial Drive
O'Fallon, MO 63366
800-553-5605

DETAILS

P+Z No. #21-011066
Approval Date: 02-07-22
City No.
Page No. **C14**



SNOUT DETAIL AI 4 PROFILE VIEW: A-A
NOT TO SCALE



SNOUT DETAIL GI 7 PROFILE VIEW: B-B
NOT TO SCALE

Supplied By:
TRENCH DRAIN SUPPLY 877-903-7246
www.trenchdrainsupply.com

R-5050 Series Automatic Drainage Gate

Automatic drainage gates are used in areas with a requirement to prevent back flow, such as storm and sanitary sewer systems.

STANDARD GATES: Furnished with vertical closure for maximum ease of operation.

GENERAL INFORMATION: Gates are made of cast iron. All moving parts operate on stainless steel hinge pins. The cover is hung with cast iron arms (Ductile Iron arms on larger sizes) located at the outer edges near the center of gravity to ensure sensitive operation. For improved seating, order with neoprene seat at extra cost.

Aluminum covers can be furnished for special requirements, if specified. Also available on special order and at extra cost are neoprene or solid bronze seat mounts and bronze bushed hinges.

For applications with extreme head pressure contact Neenah's Product Engineering Department.

Maximum head loss occurs when pipe is flowing full. Consider the head loss to be one-half the pipe diameter.

These flap gates are self-draining when no up-stream flow exists and no head is on the downstream side.

Catalog No.	Catalog No.	Catalog No.	Dimensions in inches											
Type SF	Type CF	Type FF	Diameter	A	B	C	D	E	F	N	S			
R-5050-SF6	R-5050-CF6	R-5050-FF6	6	7	11	13	11	3/4	7	four	5/8			
R-5050-SF8	R-5050-CF8	R-5050-FF8	8	9 1/4	11	13	11	1 1/8	9 1/4	four	5/8			
R-5050-SF10	R-5050-CF10	R-5050-FF10	10	11 1/4	13 1/2	15 1/5	13 1/2	1 1/8	11 1/4	four	5/8			
R-5050-SF12	R-5050-CF12	R-5050-FF12	12	13 1/4	15 7/8	18	15 3/4	1 1/8	13 1/4	four	5/8			
R-5050-SF15	R-5050-CF15	R-5050-FF15	15	16 1/4	19	21	16 3/4	1 1/8	16 1/4	four	5/8			
R-5050-SF18	R-5050-CF18	R-5050-FF18	18	19 1/4	22 1/8	24 1/4	22 1/8	1 1/4	19 1/4	four	3/4			
R-5050-SF20	R-5050-CF20	R-5050-FF20	20	22 1/4	25 1/8	27 1/4	25 1/8	1 1/4	22 1/4	four	3/4			
R-5050-SF21	R-5050-CF21	R-5050-FF21	21	22 1/4	25 1/8	27 1/4	25 1/8	1 1/4	22 1/4	four	3/4			
R-5050-SF24	R-5050-CF24	R-5050-FF24	24	25 1/4	28 1/4	30 1/4	28 1/4	1 1/4	25 1/4	six	3/4			
R-5050-SF27	R-5050-CF27	R-5050-FF27	27	28 1/4	31 1/4	33 1/4	31 1/4	1 1/4	28 1/4	six	7/8			
R-5050-SF30	R-5050-CF30	R-5050-FF30	30	31 1/4	34 1/4	36 1/2	34 1/4	1 1/4	31 1/4	six	7/8			
R-5050-SF36	R-5050-CF36	R-5050-FF36	36	37 1/2	41 1/2	43 1/2	41 1/2	1 3/8	37 1/2	six	7/8			
R-5050-SF42	R-5050-CF42	R-5050-FF42	42	43 1/2	47 1/2	49 1/2	47 1/2	1 3/8	43 1/2	six	7/8			
R-5050-SF48	R-5050-CF48	R-5050-FF48	48	49 1/2	54	56 1/2	54	1 1/2	49 1/2	six	1			

CLICK HERE to return to the Table of Contents