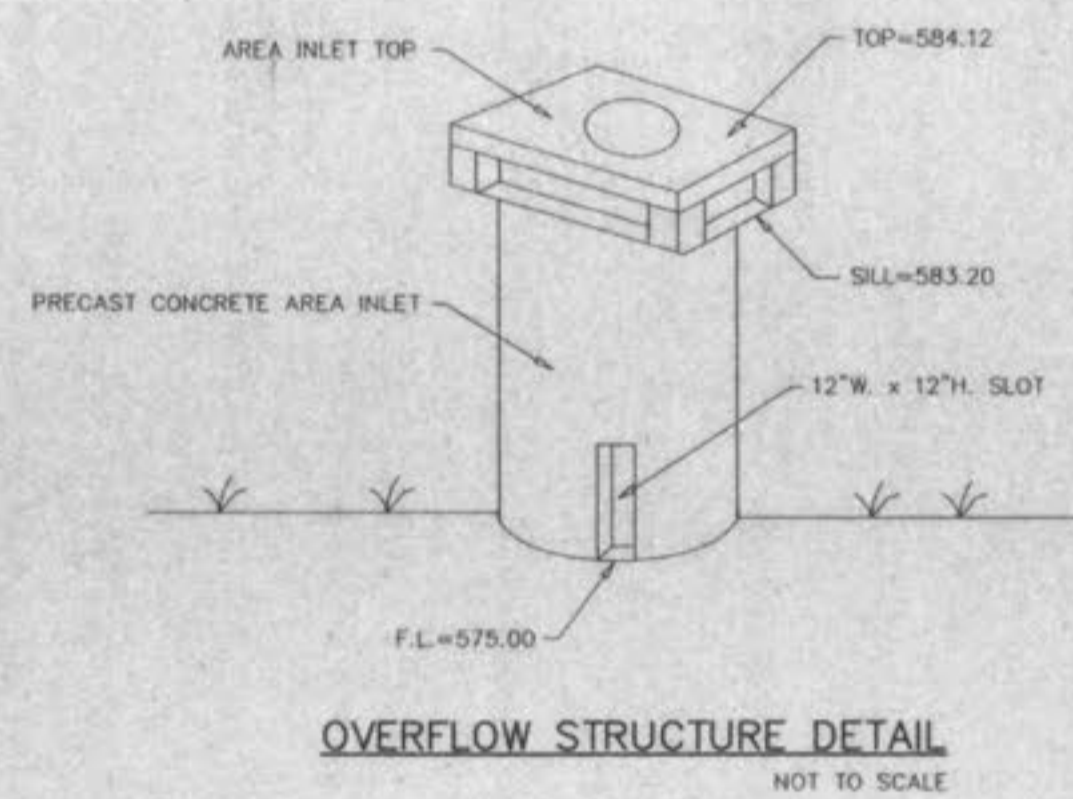
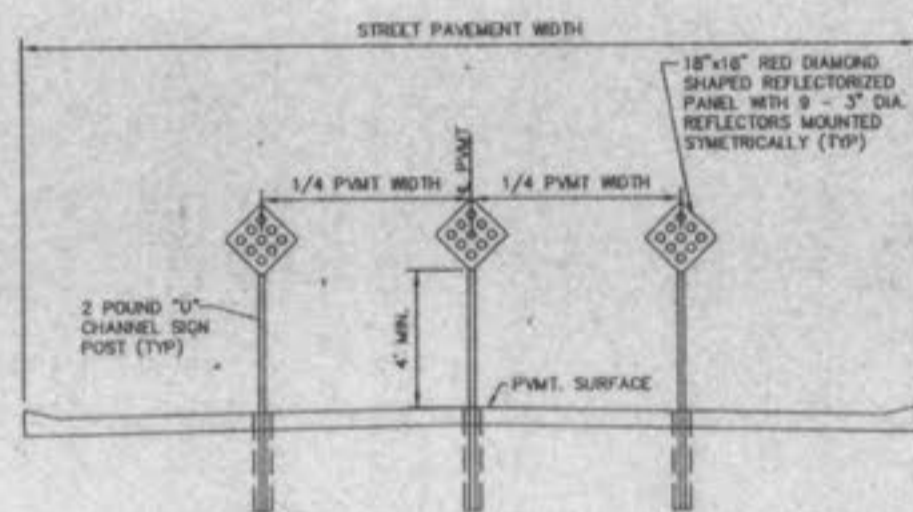
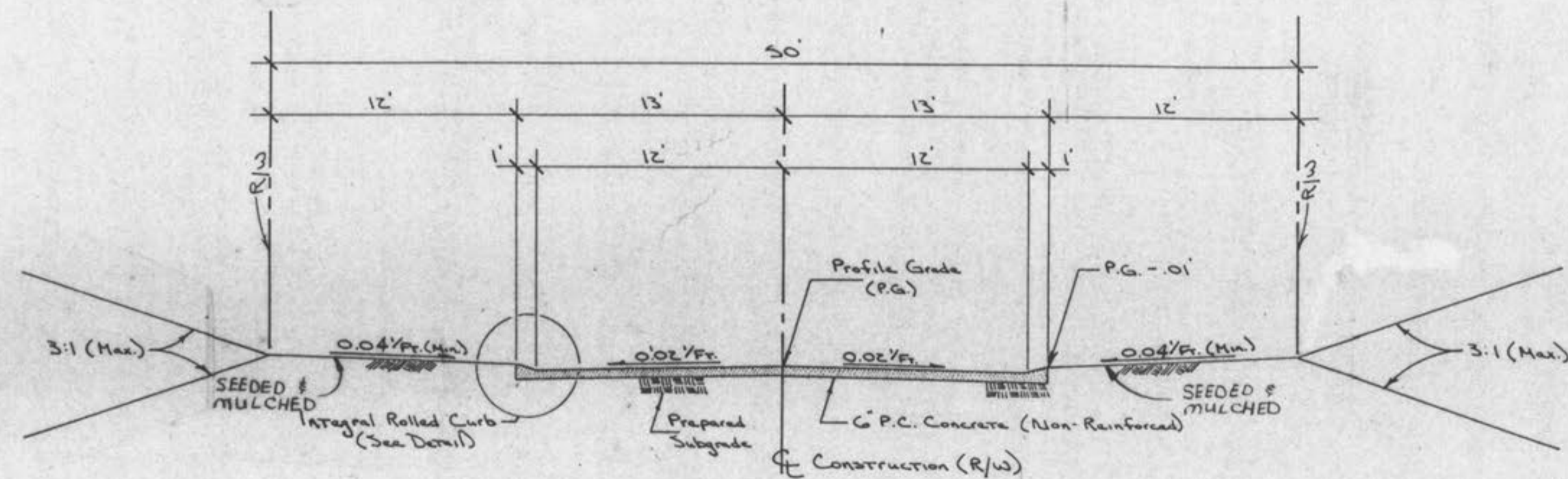


ENTRANCE DETAIL  
N.T.S.

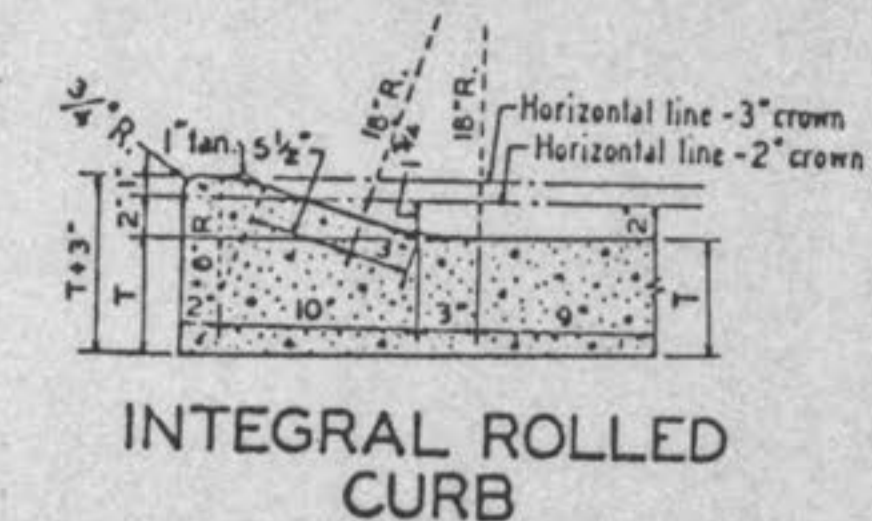
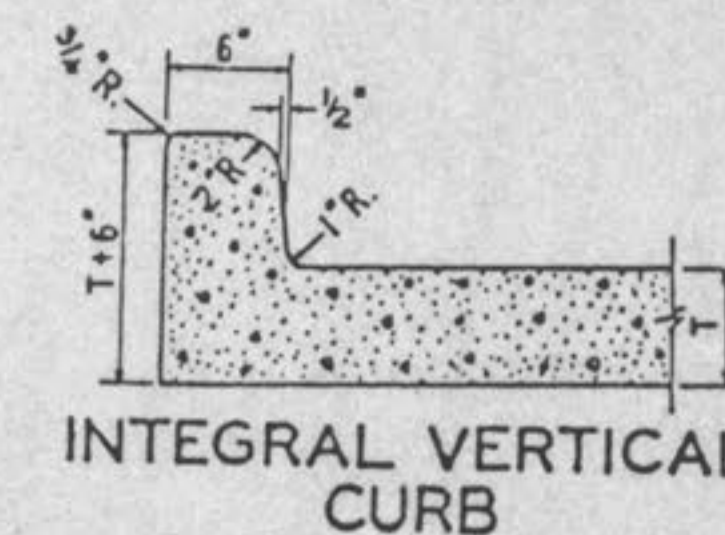


OVERFLOW STRUCTURE DETAIL  
NOT TO SCALE

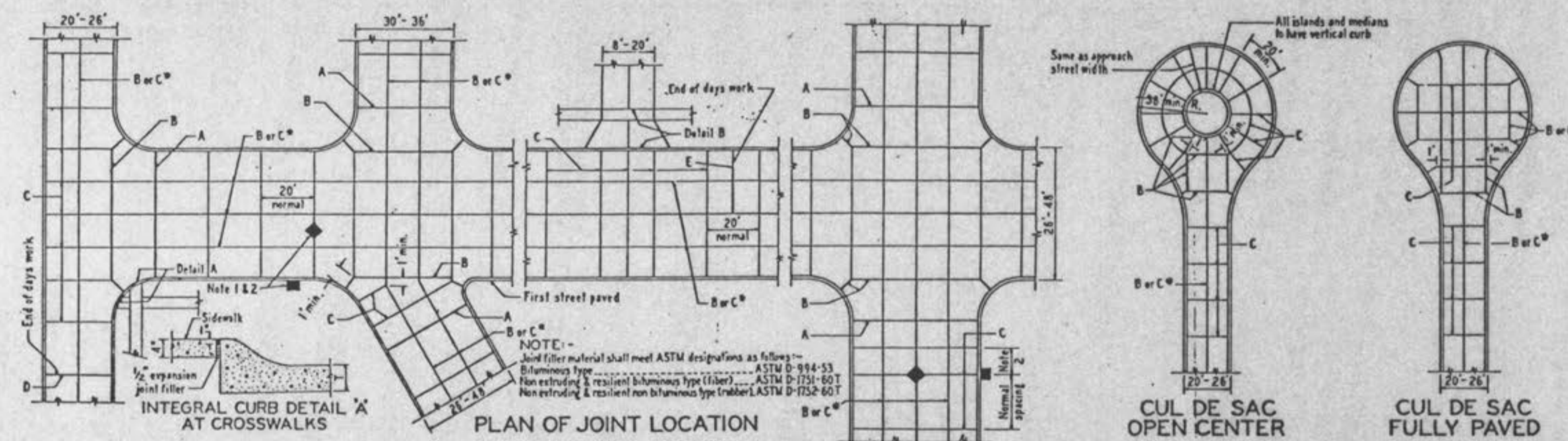
NOTE: TO BE USED IN CONJUNCTION WITH A 6.5 FOOT WIDE SPILLWAY IN BERM ELEVATION = 583.20



TYPICAL SECTION  
(26' W. P.C. CONC. PVMT.)

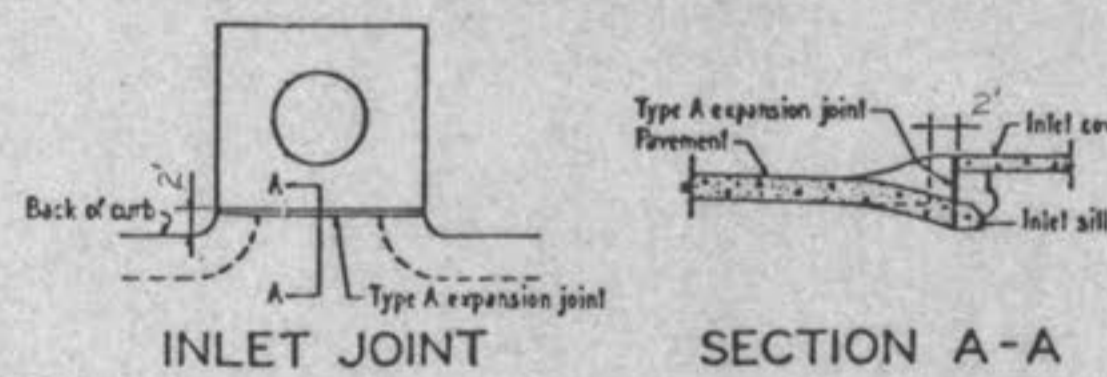
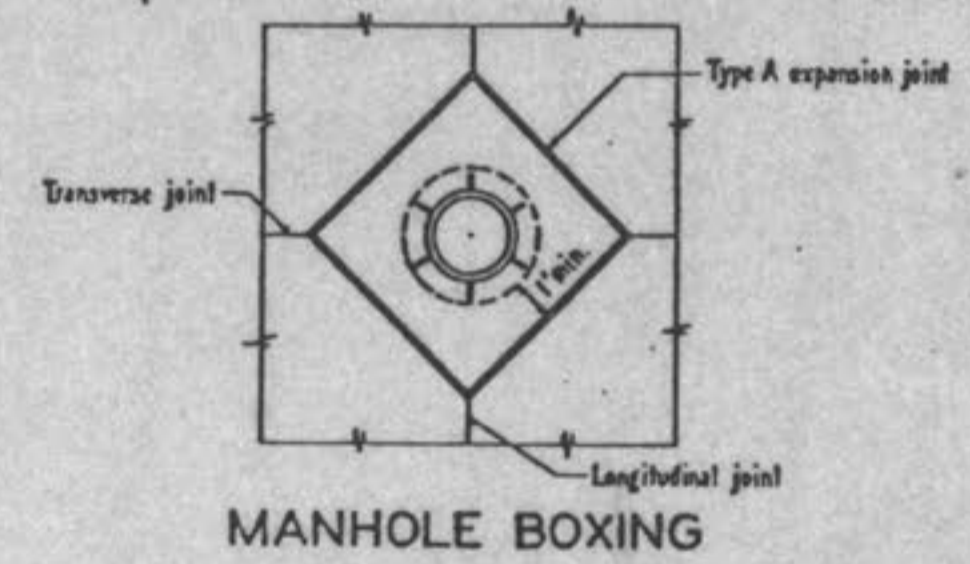
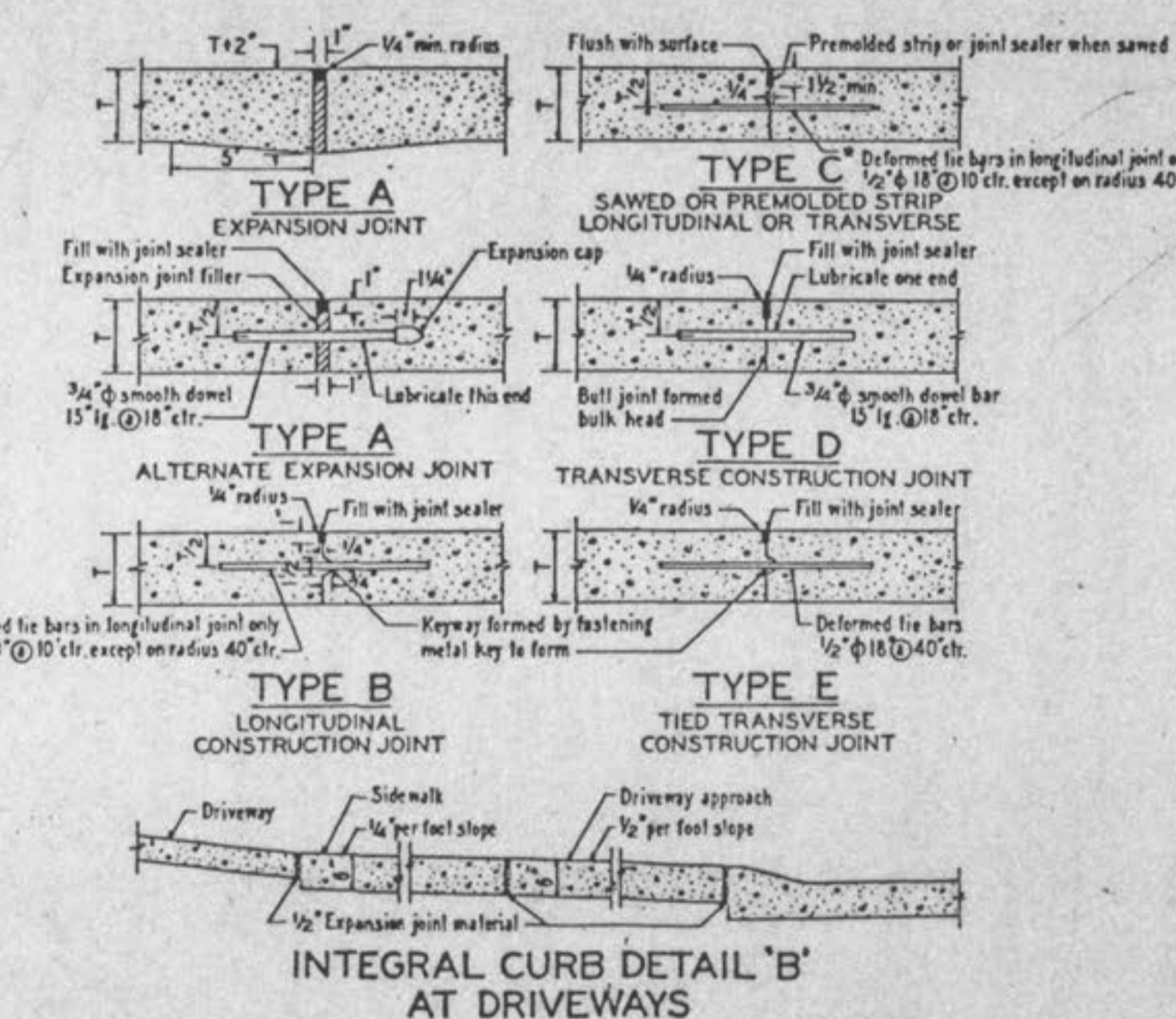


INTEGRAL CURB PAVEMENT TYPICAL SECTIONS AND DETAILS



INTEGRAL CURB DETAIL 'A' AT CROSSWALKS

CUL DE SAC OPEN CENTER  
CUL DE SAC FULLY PAVED



- NOTE
- 1) All catch basins shall be separated from the pavement and curb by expansion joint material extending completely through curb and slab. Manhole castings within the pavement limits shall be boxed in as shown.
  - 2) When a joint falls within 5 ft. of or contacts basin, manholes or other structures, shorten one or more panels either side of opening to permit joint to fall on round structures and at or between corners of rectangular structures.
  - 3) T=6" on Local street.
  - 4) T=7" on Major or Thru street.