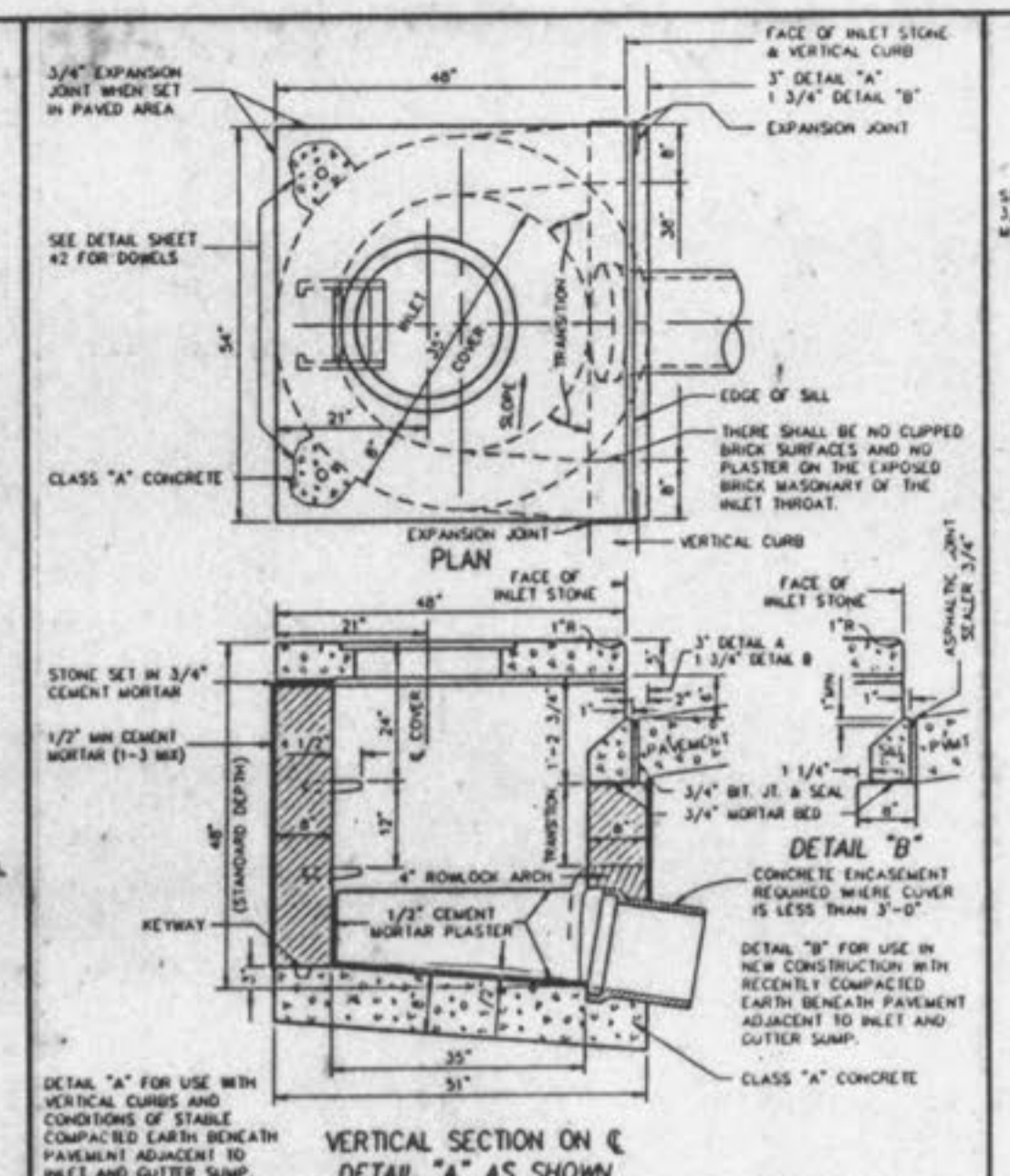
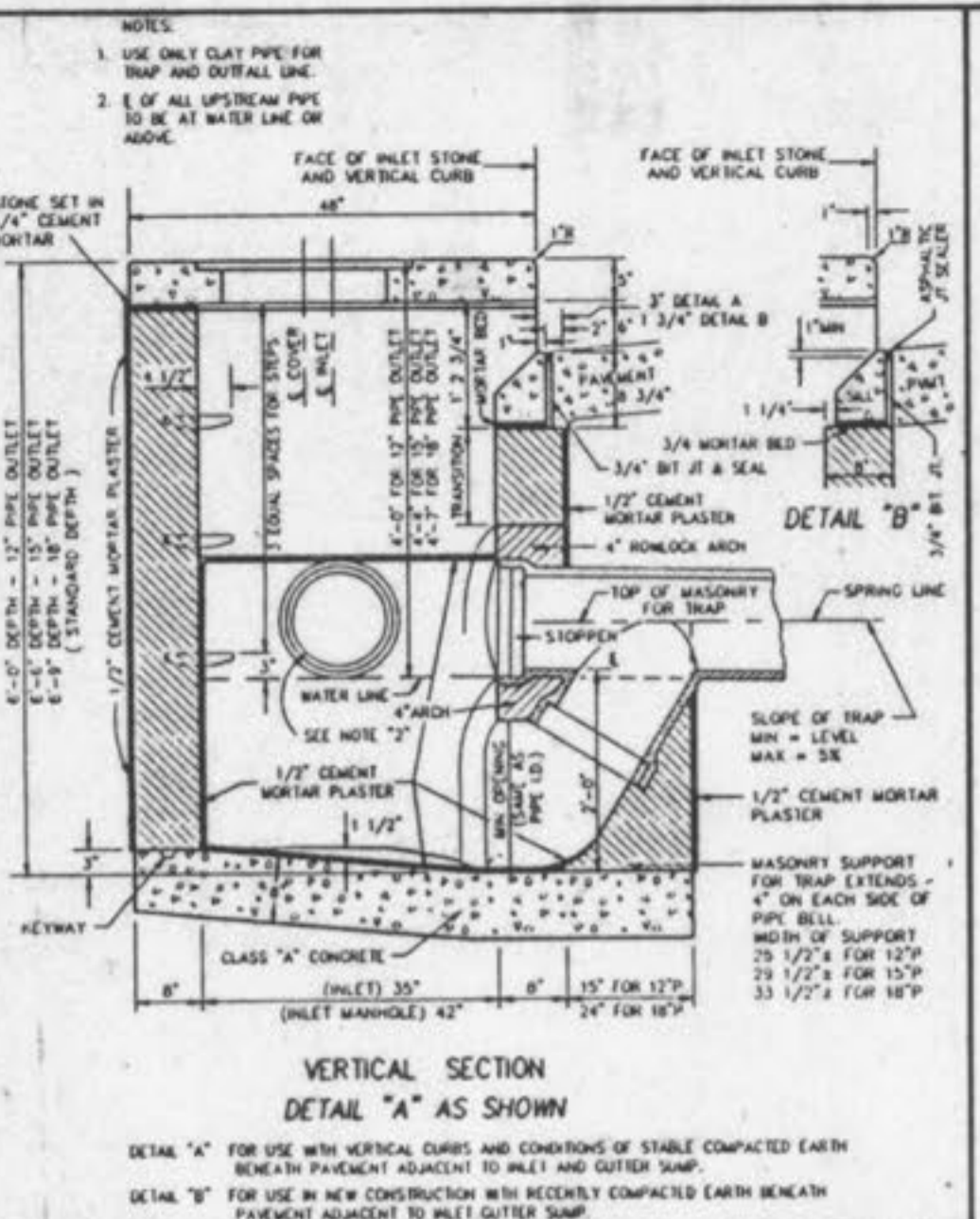


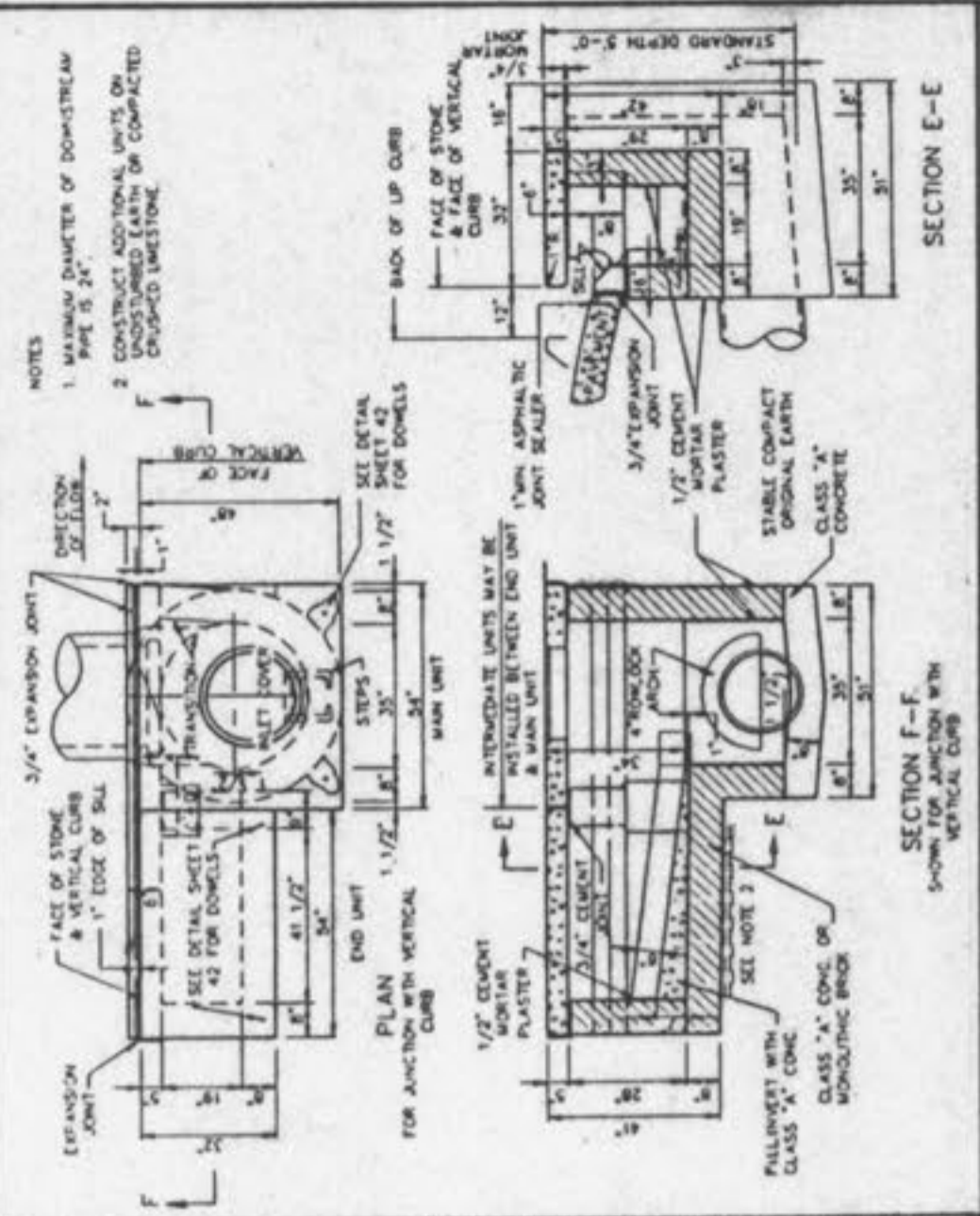
TYPICAL PRE-CAST MH. TEE FOR REINFORCED CONCRETE PIPE SEWERS 48" INTO LARGER IN DIAMETER  
 METROPOLITAN ST. LOUIS SEWER DISTRICT Standard Details of Sewer Construction  
 Dr. W.S.H. Ch. J.C.K. 1992 SHEET 19



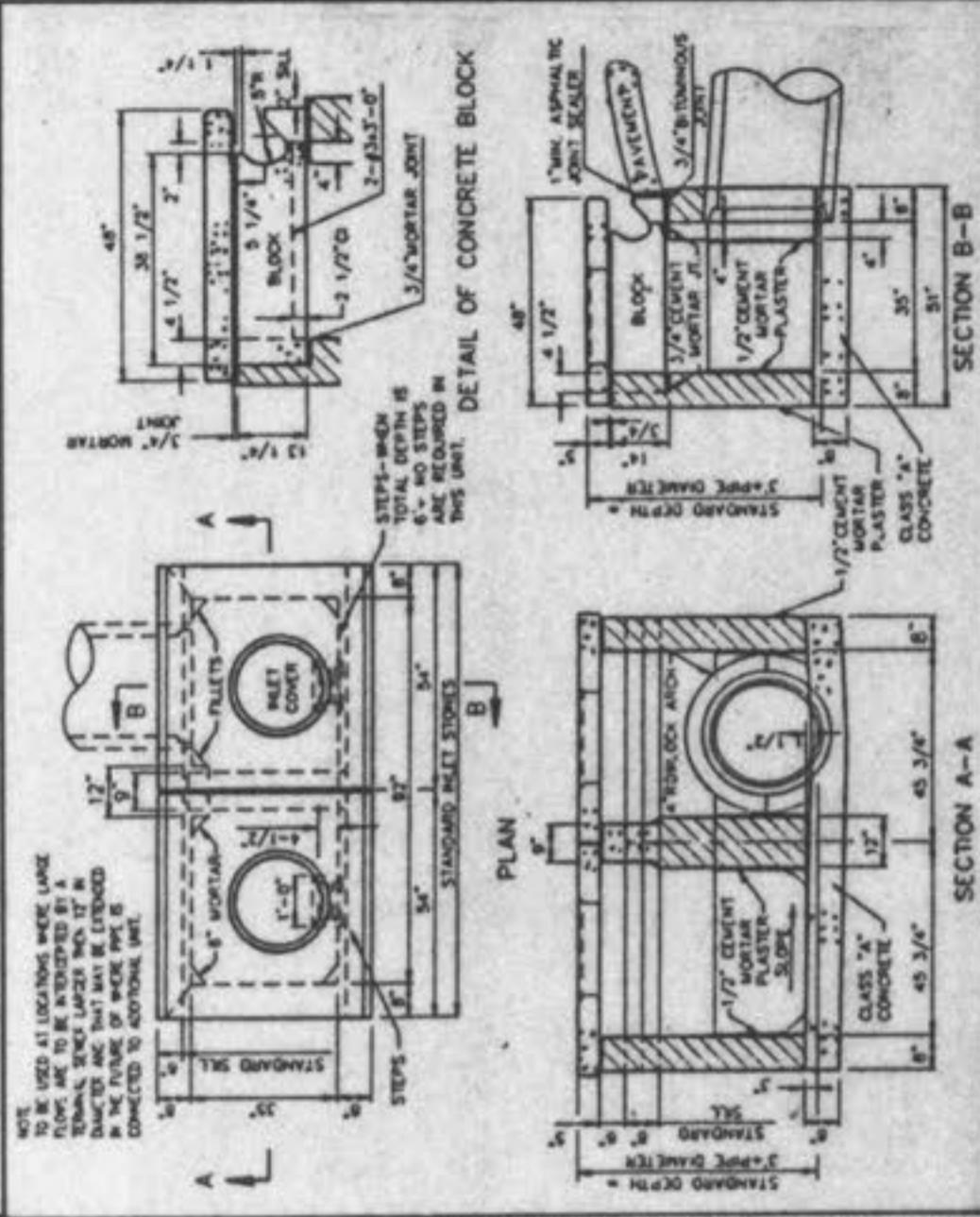
UNTRAPPED STREET INLET BRICK CONSTRUCTION  
 METROPOLITAN ST. LOUIS SEWER DISTRICT Standard Details of Sewer Construction  
 Dr. W.S.H. Ch. J.C.K. 1992 SHEET 20



TRAPPED STREET INLET BRICK CONSTRUCTION  
 METROPOLITAN ST. LOUIS SEWER DISTRICT Standard Details of Sewer Construction  
 Dr. W.S.H. Ch. J.C.K. 1992 SHEET 21



MULTIPLE STREET INLET BRICK CONSTRUCTION  
 METROPOLITAN ST. LOUIS SEWER DISTRICT Standard Details of Sewer Construction  
 Dr. D.A.B. Ch. J.C.K. 1992 SHEET 22



DOUBLE UNTRAPPED STREET INLET BRICK CONSTRUCTION  
 METROPOLITAN ST. LOUIS SEWER DISTRICT Standard Details of Sewer Construction  
 Dr. D.A.B. Ch. J.C.K. 1992 SHEET 23

