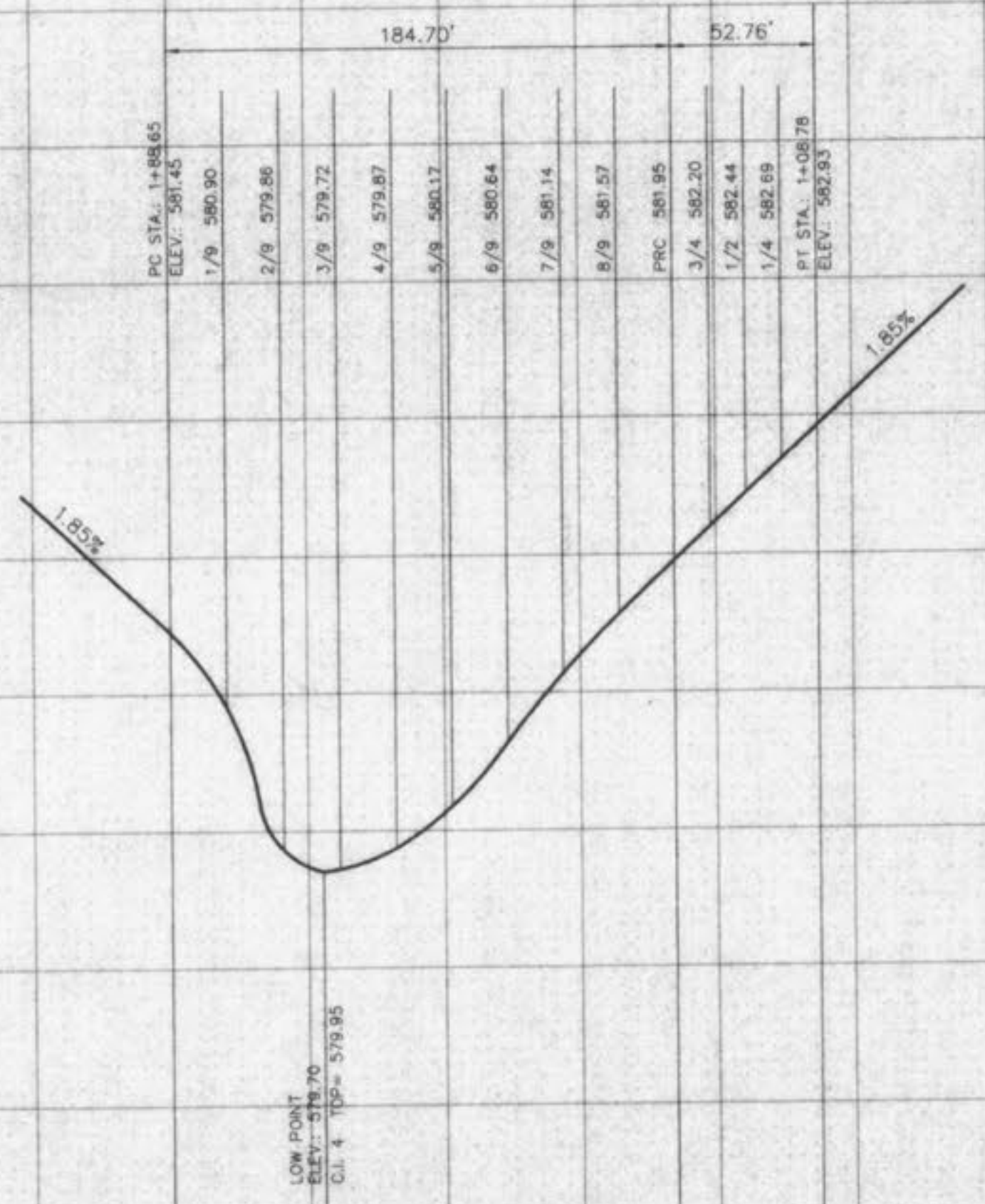


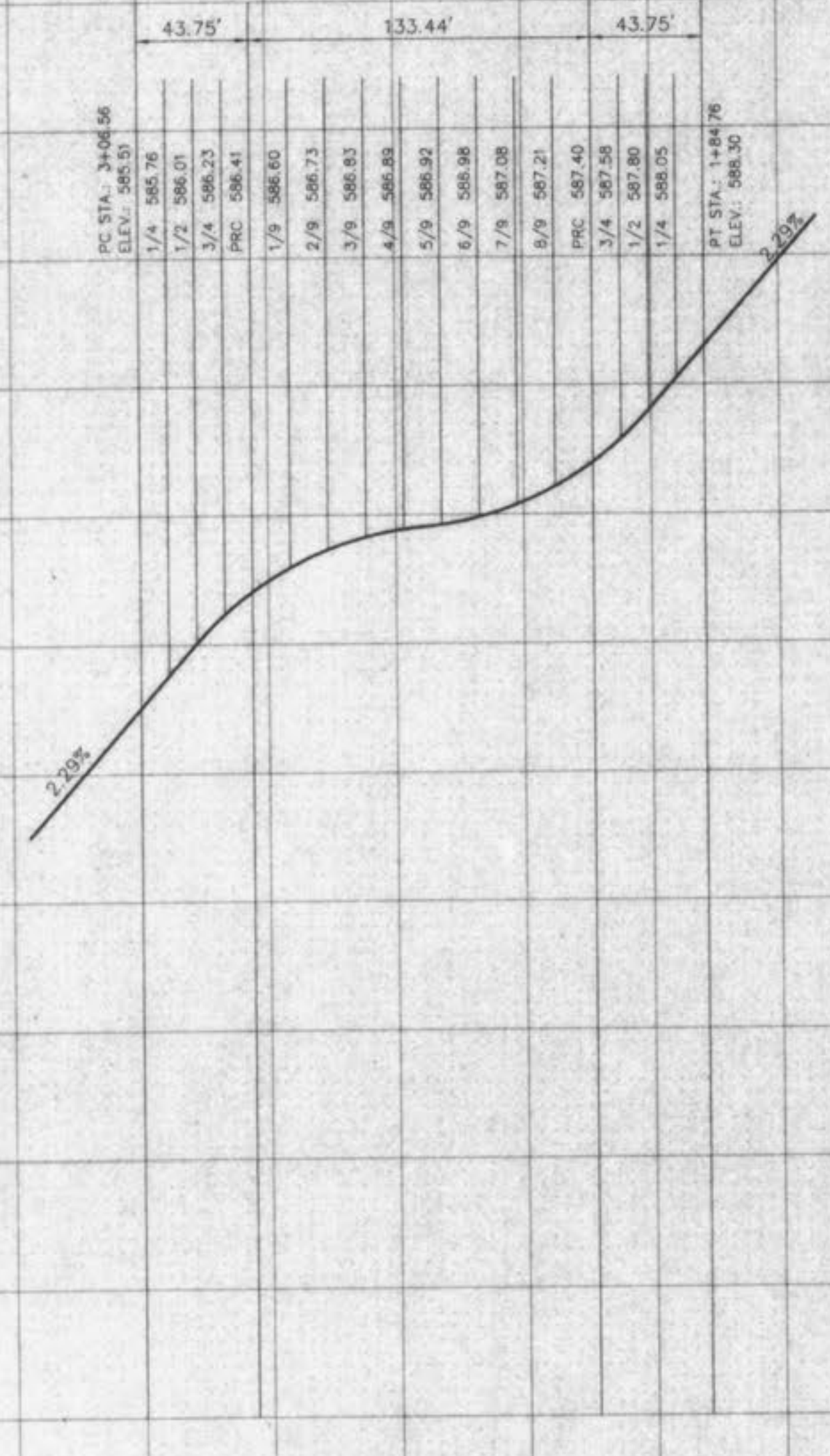
585
584
583
582
581
580
579
578
577
576
575



**PARSONS CREEK COURT
CUL-DE-SAC WARPING**

NOTE: ALL WARPING ELEVATIONS SHOWN
ARE TO TOP OF CURB UNLESS
OTHERWISE NOTED.

590
589
588
587
586
585
584
583
582
581
580



**FIDDLERS DRIVE
EYEBROW WARPING**

NOTE: ALL WARPING ELEVATIONS SHOWN
ARE TO TOP OF CURB UNLESS
OTHERWISE NOTED.

SCALE: 1" = 50' HORIZONTAL
1" = 10' VERTICAL