

ROUND PIPE				HORIZONTAL ELLIPTICAL PIPE			
INSIDE DIAMETER OF PIPE (INCHES)	"W" PAYLINE WIDTH OF TRENCH (INCHES)	"W" PAYLINE WIDTH OF TRENCH (FEET)	CONCRETE ENCASUREMENT (INCHES)	INSIDE DIMENSIONS OF PIPE (INCHES)	"W" PAYLINE WIDTH OF TRENCH (INCHES)	"W" PAYLINE WIDTH OF TRENCH (FEET)	CONCRETE ENCASUREMENT (INCHES)
4	30	2.50	3.28				
6	30	2.50	3.59				
8	30	2.50	3.87				
10	30	2.50	4.09				
12	30	2.50	4.25				
15	36	3.00	5.55				
18	36	3.00	5.77	14 x 23	41	3.42	5.94
24	39	3.25	6.81				
30	42	3.50	7.39	19 x 30	49	4.08	7.88
36	45	3.75	8.18	22 x 34	53	4.42	8.61
42	49	4.08	9.30	24 x 38	58	4.83	9.70
48	53	4.42	10.53	27 x 42	62	5.17	10.71
54	56	4.67	11.43	29 x 45	66	5.50	11.72
60	59	4.92	12.40	32 x 49	71	5.92	12.74
66	63	5.25	13.38	34 x 53	75	6.25	13.75
72	67	5.58	14.40	37 x 57	79	6.58	14.76
78	70	5.83	15.67	39 x 60	83	6.92	15.78
84	73	6.08	16.81	41 x 63	87	7.25	16.79
90	77	6.42	18.15	43 x 68	92	7.67	18.01
96	81	6.75	19.37	45 x 71	96	8.00	19.02
102	84	7.00	20.73	48 x 76	101	8.42	20.24
108	88	7.38	22.45	51 x 81	106	8.84	21.46
114	92	7.75	24.00	53 x 83	109	9.17	22.47
120	96	8.12	25.37	56 x 91	118	9.83	23.48
126	100	8.50	26.90	58 x 94	122	10.16	24.49
132	104	8.87	28.37	61 x 98	128	10.58	25.50
138	108	9.25	29.90	63 x 106	135	11.25	26.51
144	112	9.62	31.38	66 x 113	143	11.82	27.52
150	116	10.00	32.90	68 x 121	152	12.39	28.53
156	120	10.38	34.37	71 x 128	160	13.00	29.54
162	124	10.75	35.90	73 x 136	168	13.61	30.55
168	128	11.12	37.37	76 x 143	176	14.22	31.56
174	132	11.50	38.90	78 x 151	185	14.83	32.57
180	136	11.88	40.37	81 x 158	193	15.44	33.58
186	140	12.25	41.90	83 x 166	202	16.05	34.59
192	144	12.62	43.37	86 x 173	210	16.66	35.60
198	148	13.00	44.90	88 x 181	219	17.27	36.61
204	152	13.38	46.37	91 x 188	227	17.88	37.62
210	156	13.75	47.90	93 x 196	236	18.49	38.63
216	160	14.12	49.37	96 x 203	244	19.10	39.64
222	164	14.50	50.90	98 x 211	253	19.71	40.65
228	168	14.88	52.37	101 x 218	261	20.32	41.66
234	172	15.25	53.90	103 x 226	270	20.93	42.67
240	176	15.62	55.37	106 x 233	278	21.54	43.68
246	180	16.00	56.90	108 x 241	287	22.15	44.69
252	184	16.38	58.37	111 x 248	295	22.76	45.70
258	188	16.75	59.90	113 x 256	304	23.37	46.71
264	192	17.12	61.37	116 x 263	312	23.98	47.72
270	196	17.50	62.90	118 x 271	321	24.59	48.73
276	200	17.88	64.37	121 x 278	329	25.20	49.74
282	204	18.25	65.90	123 x 286	338	25.81	50.75
288	208	18.62	67.37	126 x 293	346	26.42	51.76
294	212	19.00	68.90	128 x 301	355	27.03	52.77
300	216	19.38	70.37	131 x 308	363	27.64	53.78
306	220	19.75	71.90	133 x 316	372	28.25	54.79
312	224	20.12	73.37	136 x 323	380	28.86	55.80
318	228	20.50	74.90	138 x 331	389	29.47	56.81
324	232	20.88	76.37	141 x 338	397	30.08	57.82
330	236	21.25	77.90	143 x 346	406	30.69	58.83
336	240	21.62	79.37	146 x 353	414	31.30	59.84
342	244	22.00	80.90	148 x 361	423	31.91	60.85
348	248	22.38	82.37	151 x 368	431	32.52	61.86
354	252	22.75	83.90	153 x 376	440	33.13	62.87
360	256	23.12	85.37	156 x 383	448	33.74	63.88
366	260	23.50	86.90	158 x 391	457	34.35	64.89
372	264	23.88	88.37	161 x 398	465	34.96	65.90
378	268	24.25	89.90	163 x 406	474	35.57	66.91
384	272	24.62	91.37	166 x 413	482	36.18	67.92
390	276	25.00	92.90	168 x 421	491	36.79	68.93
396	280	25.38	94.37	171 x 428	499	37.40	69.94
402	284	25.75	95.90	173 x 436	508	38.01	70.95
408	288	26.12	97.37	176 x 443	516	38.62	71.96
414	292	26.50	98.90	178 x 451	525	39.23	72.97
420	296	26.88	100.37	181 x 458	533	39.84	73.98
426	300	27.25	101.90	183 x 466	542	40.45	74.99
432	304	27.62	103.37	186 x 473	550	41.06	76.00
438	308	28.00	104.90	188 x 481	559	41.67	77.01
444	312	28.38	106.37	191 x 488	567	42.28	78.02

TABLE 1
PAYLINE WIDTHS OF TRENCH AND PAY-QUANTITIES OF CONCRETE

METROPOLITAN ST. LOUIS SEWER DISTRICT
Standard Details of Sewer Construction
Dr. B.E.B. Ch. J.C.K. 1992 SHEET 1

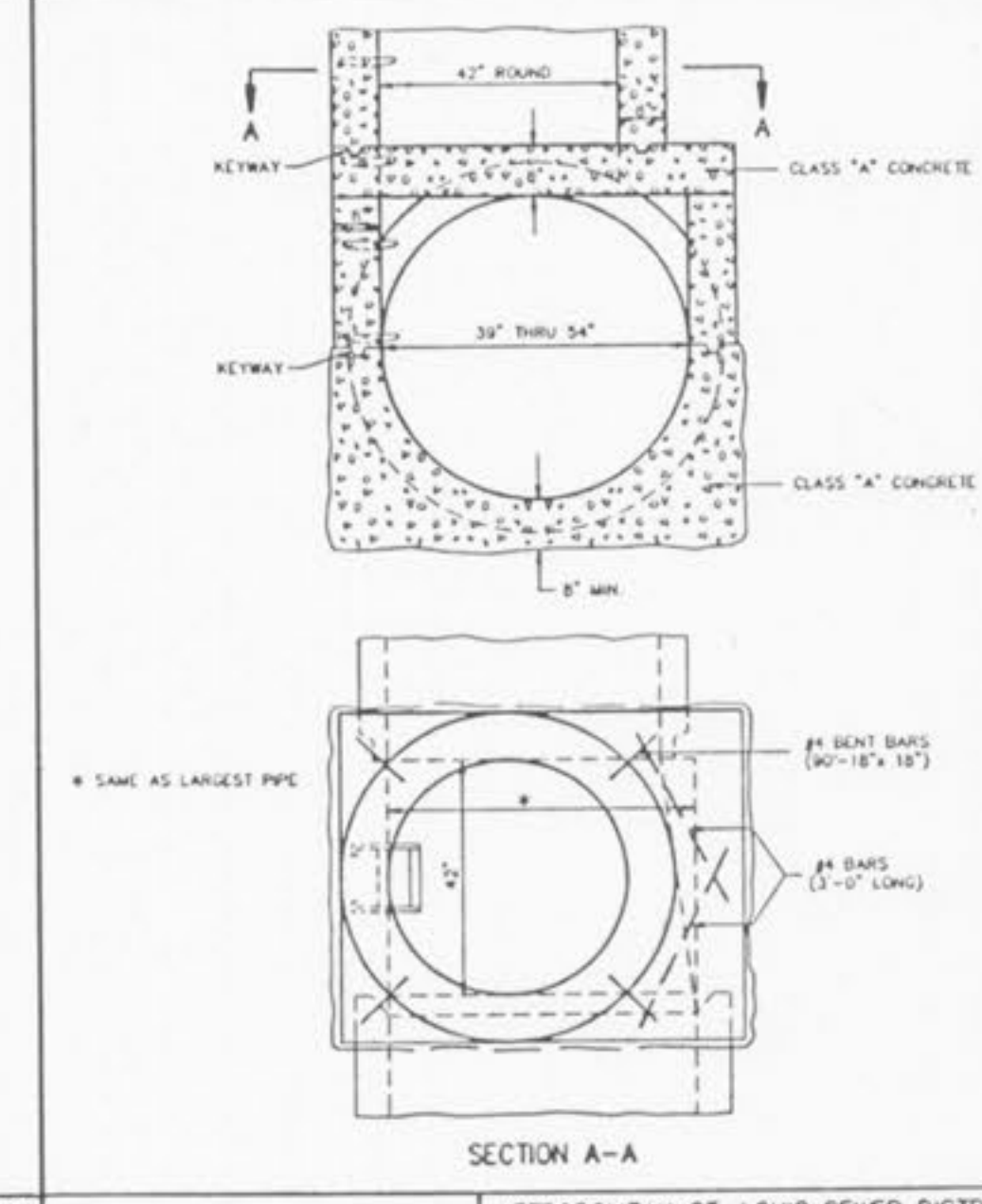
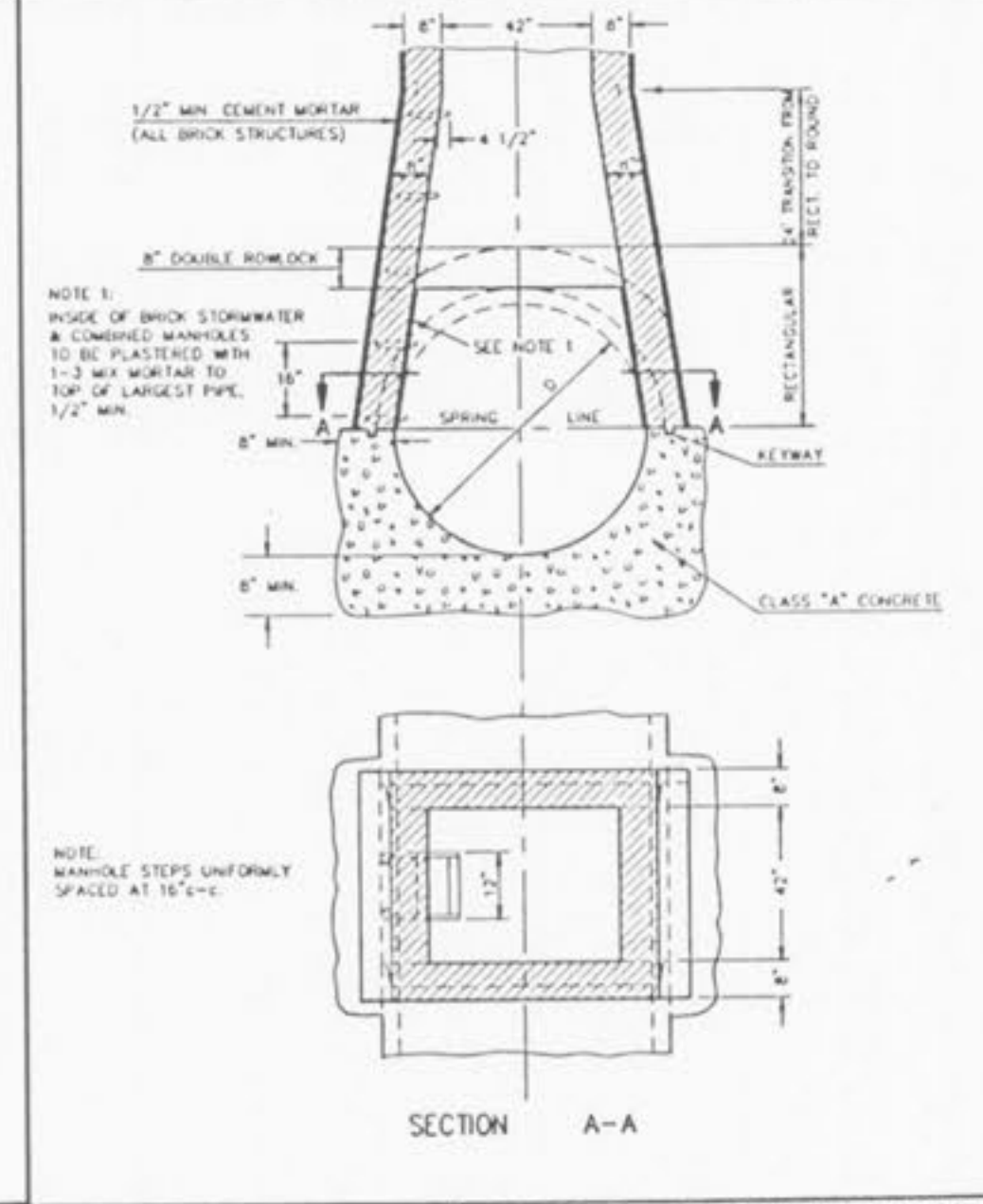
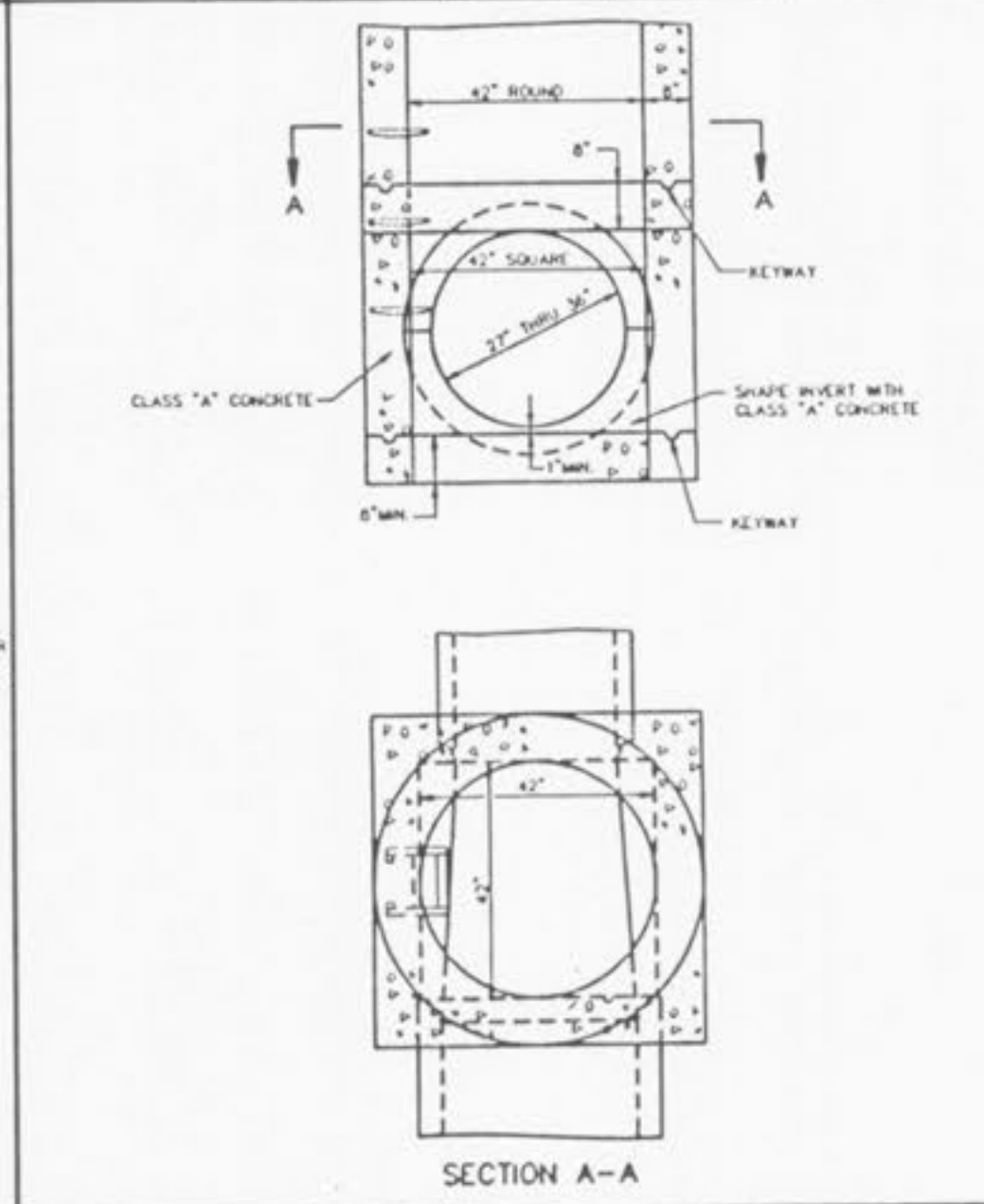
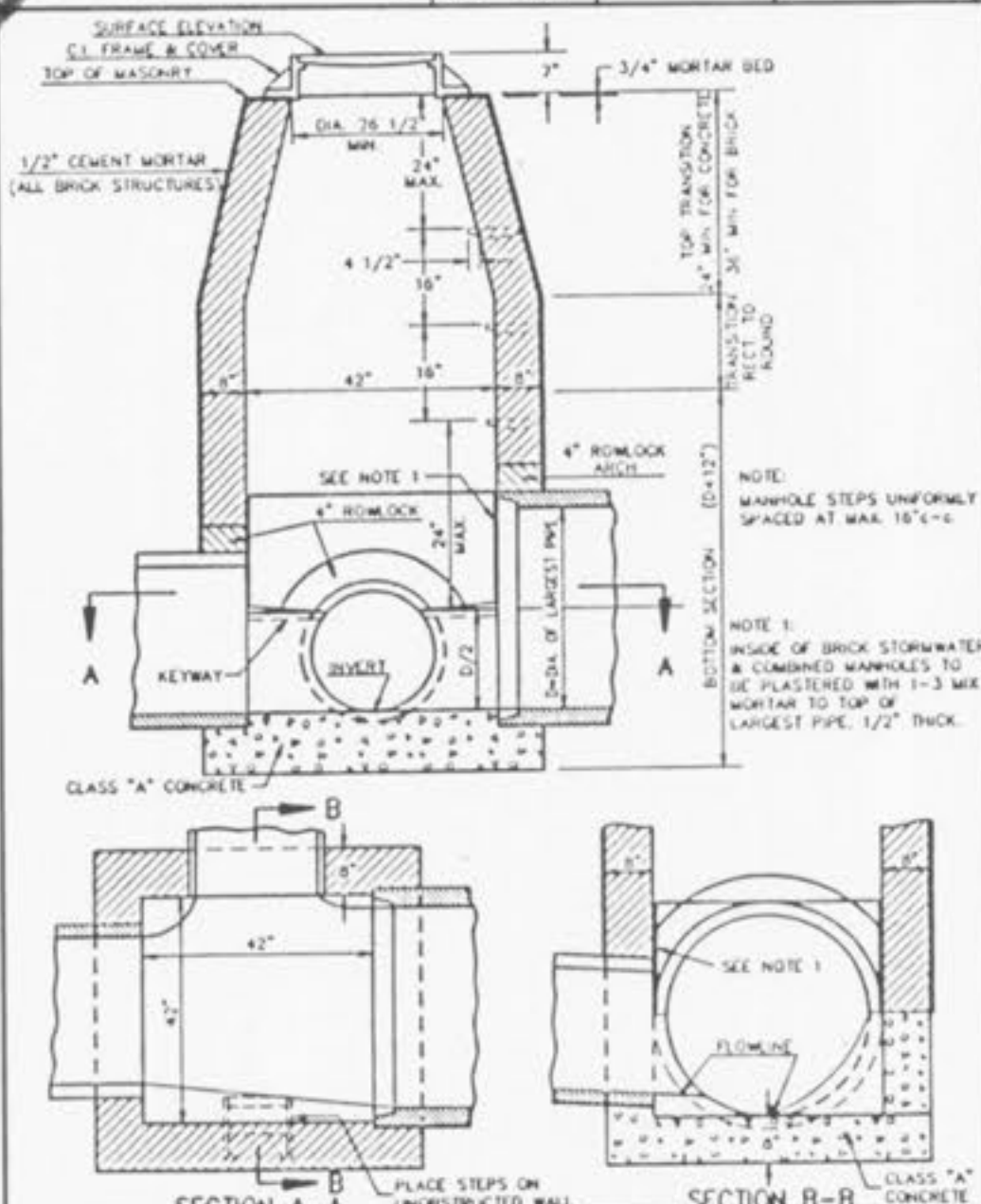
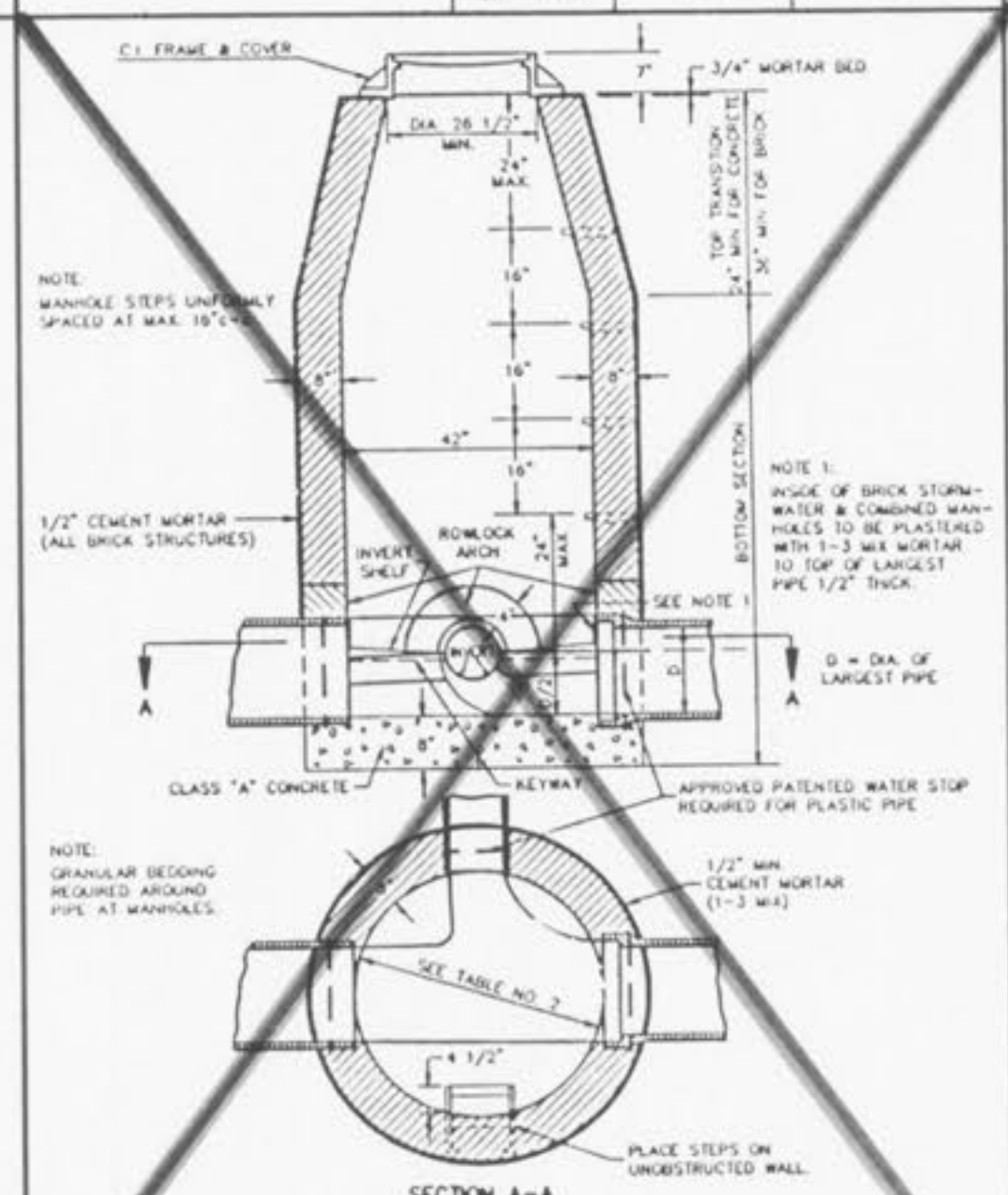
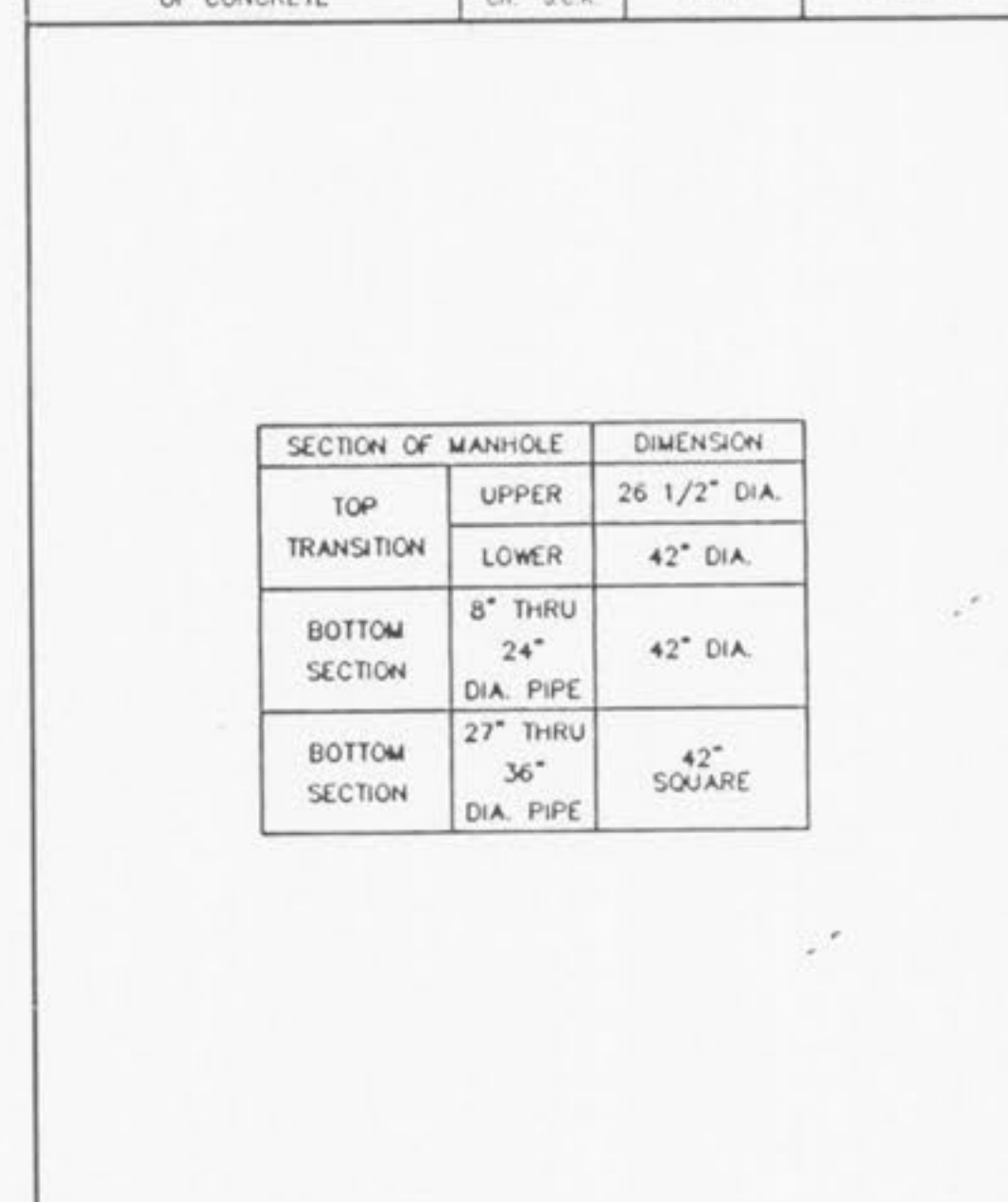
METROPOLITAN ST. LOUIS SEWER DISTRICT
Standard Details of Sewer Construction
Dr. W.S.H. Ch. J.C.K. 1992 SHEET 2

METROPOLITAN ST. LOUIS SEWER DISTRICT
Standard Details of Sewer Construction
Dr. W.S.H. Ch. J.C.K. 1992 SHEET 3

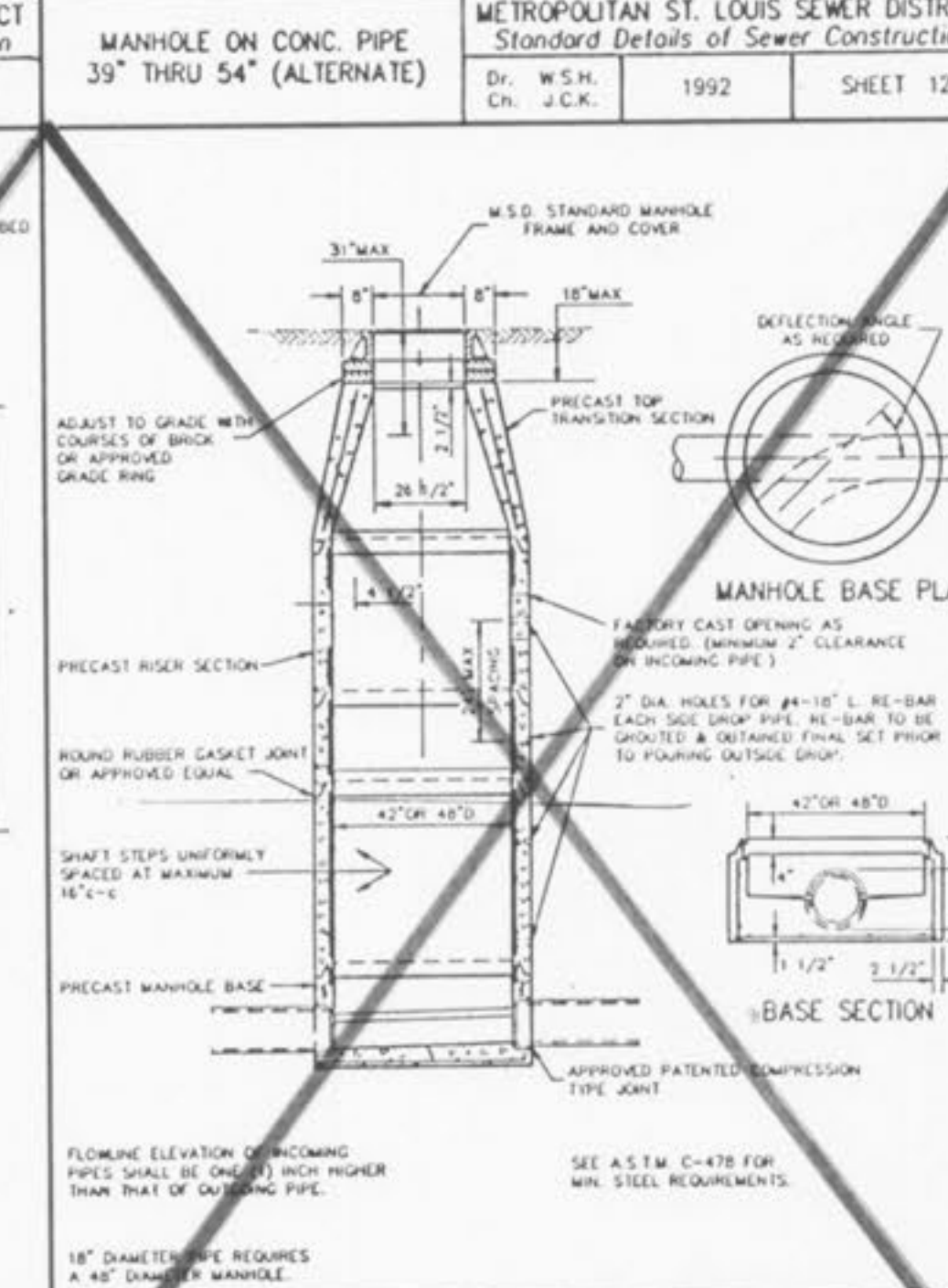
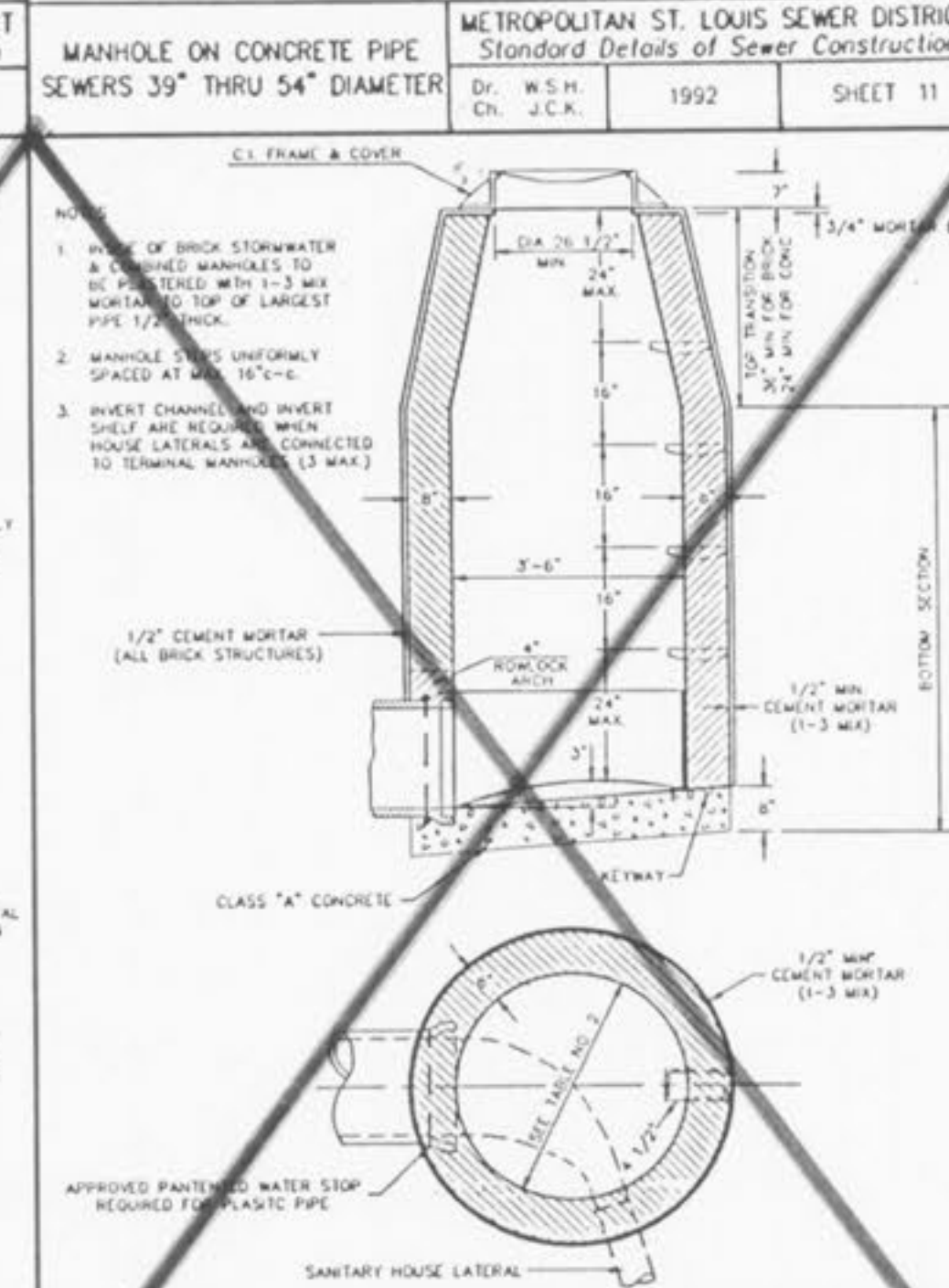
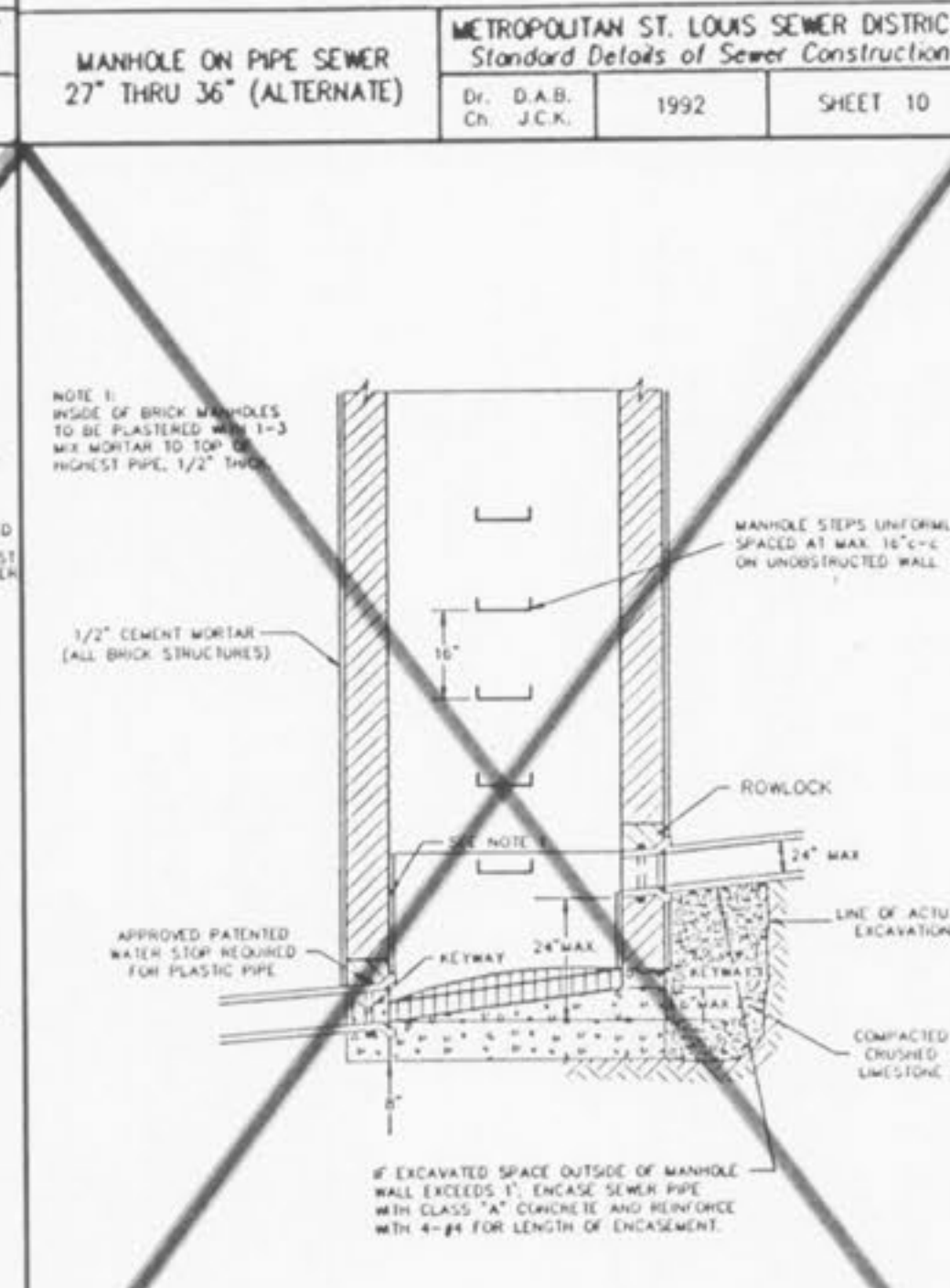
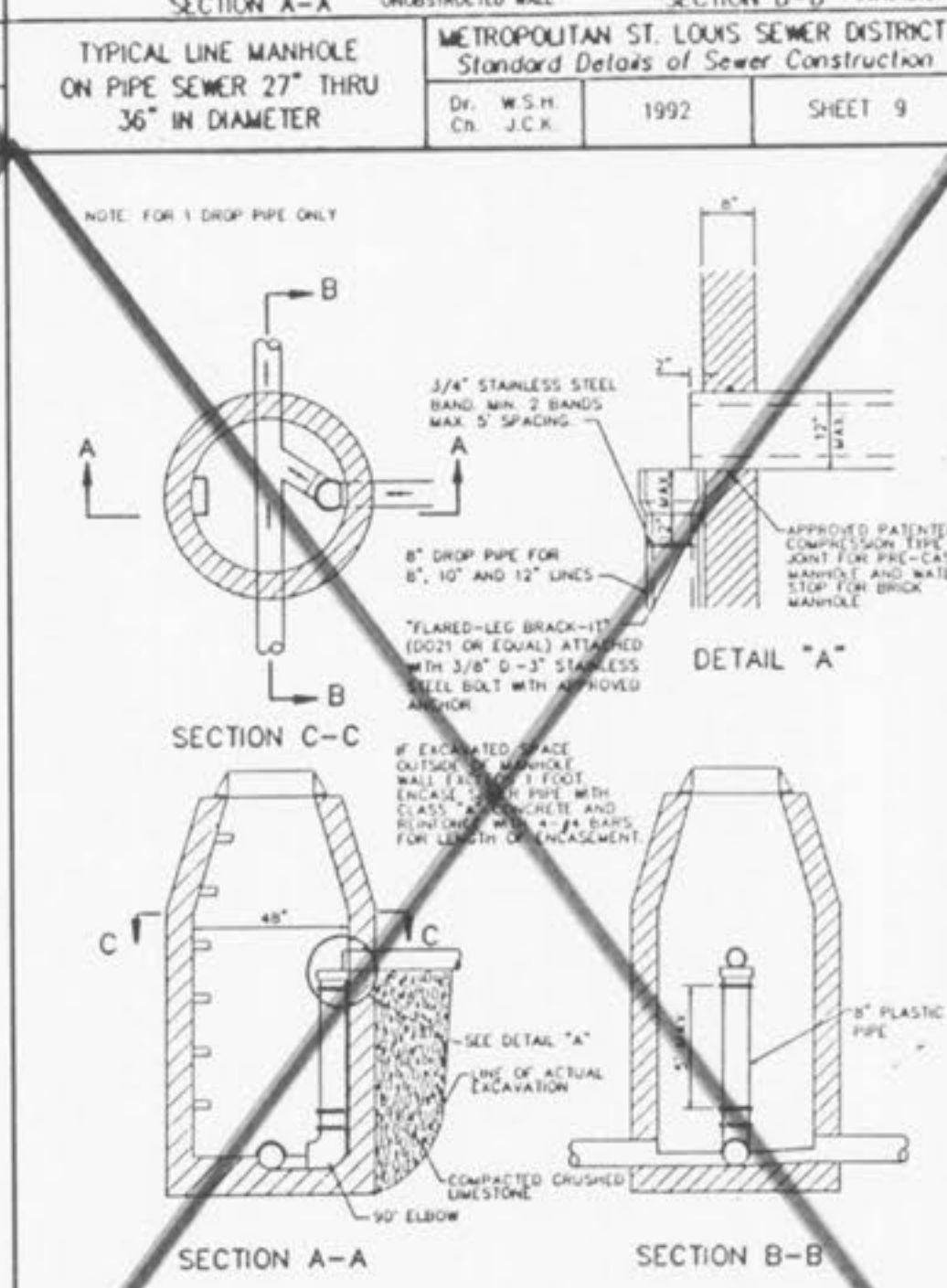
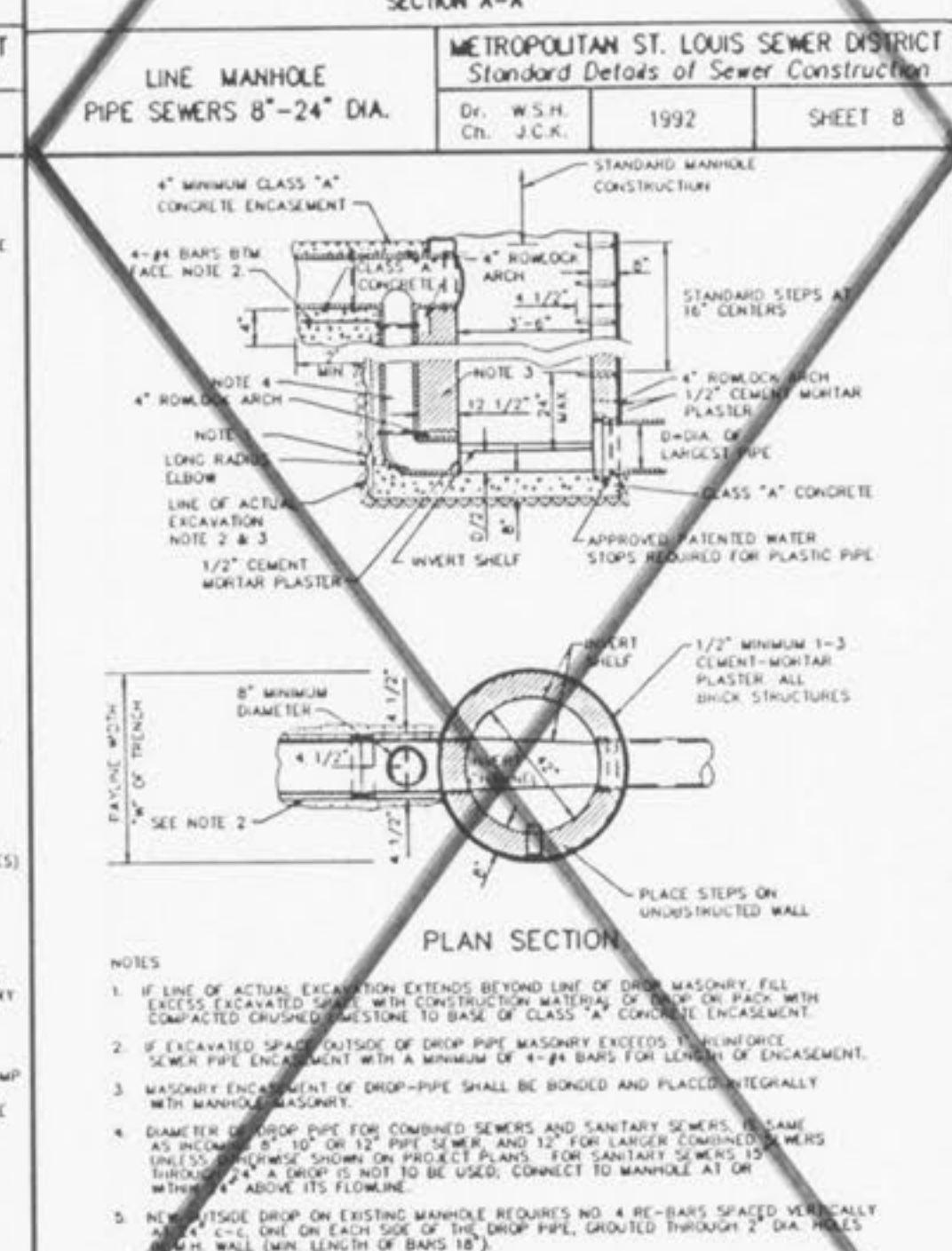
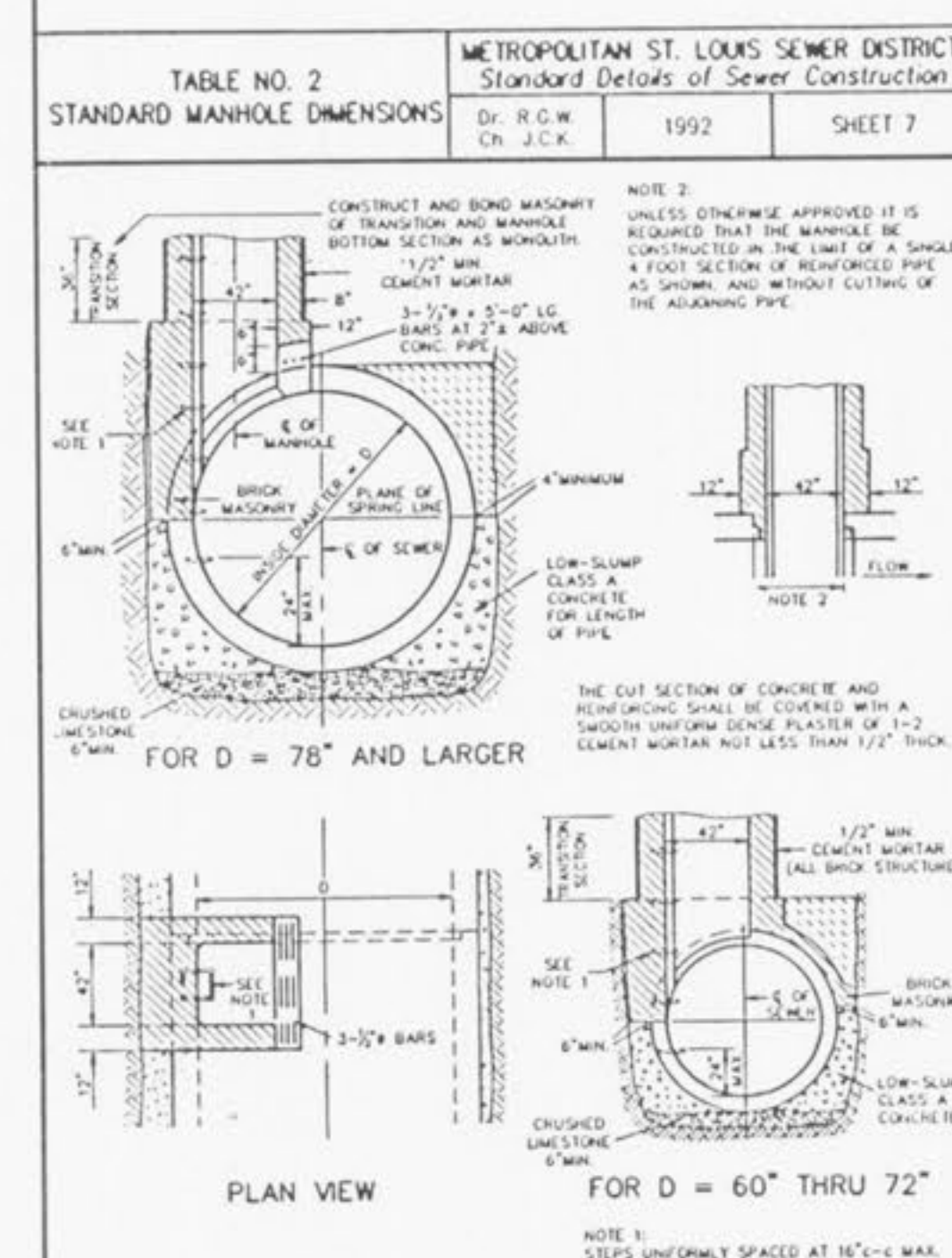
METROPOLITAN ST. LOUIS SEWER DISTRICT
Standard Details of Sewer Construction
Dr. W.S.H. Ch. J.C.K. 1992 SHEET 4

METROPOLITAN ST. LOUIS SEWER DISTRICT
Standard Details of Sewer Construction
Dr. W.S.H. Ch. J.C.K. 1992 SHEET 5

METROPOLITAN ST. LOUIS SEWER DISTRICT
Standard Details of Sewer Construction
Dr. W.S.H. Ch. J.C.K. 1992 SHEET 6



CONSTRUCTION DETAILS
ANNABROOK
PHASE TWO
NOVEMBER 16, 1998
98-8248



CONSTRUCTION DETAILS
ANNABROOK
PHASE TWO
NOVEMBER 16, 1998
98-8248

METROPOLITAN ST. LOUIS SEWER DISTRICT
Standard Details of Sewer Construction
Dr. W.S.H. Ch. J.C.K. 1992 SHEET 13

METROPOLITAN ST. LOUIS SEWER DISTRICT
Standard Details of Sewer Construction
Dr. R.G.W. Ch. J.C.K. 1992 SHEET 14

METROPOLITAN ST. LOUIS SEWER DISTRICT
Standard Details of Sewer Construction
Dr. R.G.W. Ch. J.C.K. 1992 SHEET 15

METROPOLITAN ST. LOUIS SEWER DISTRICT
Standard Details of Sewer Construction
Dr. W.S.H. Ch. J.C.K. 1992 SHEET 16

METROPOLITAN ST. LOUIS SEWER DISTRICT
Standard Details of Sewer Construction
Dr. W.S.H. Ch. J.C.K. 1992 SHEET 17

METROPOLITAN ST. LOUIS SEWER DISTRICT
Standard Details of Sewer Construction
Dr. W.S.H. Ch. J.C.K. 1992 SHEET 18

19
24