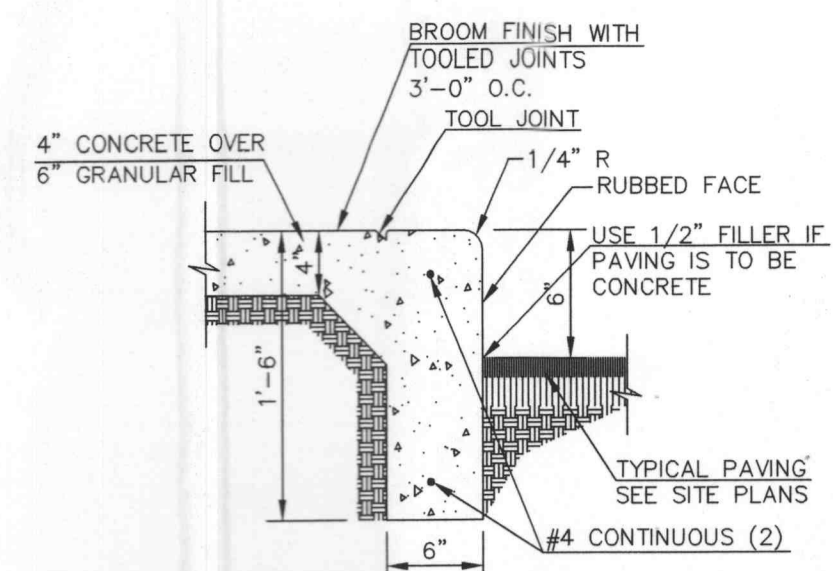
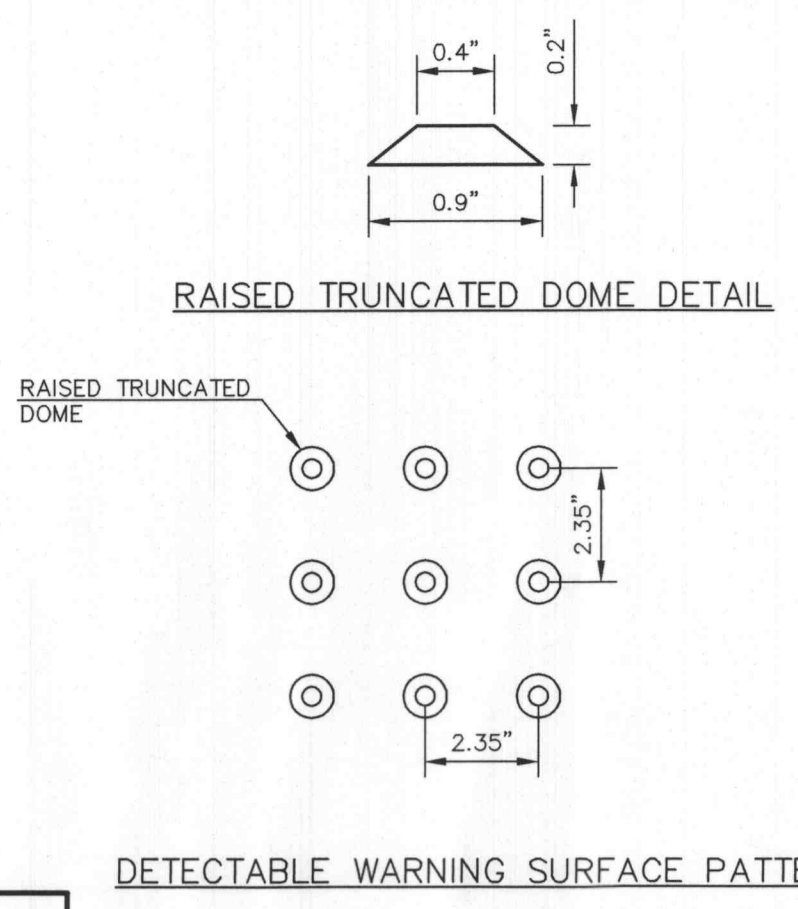


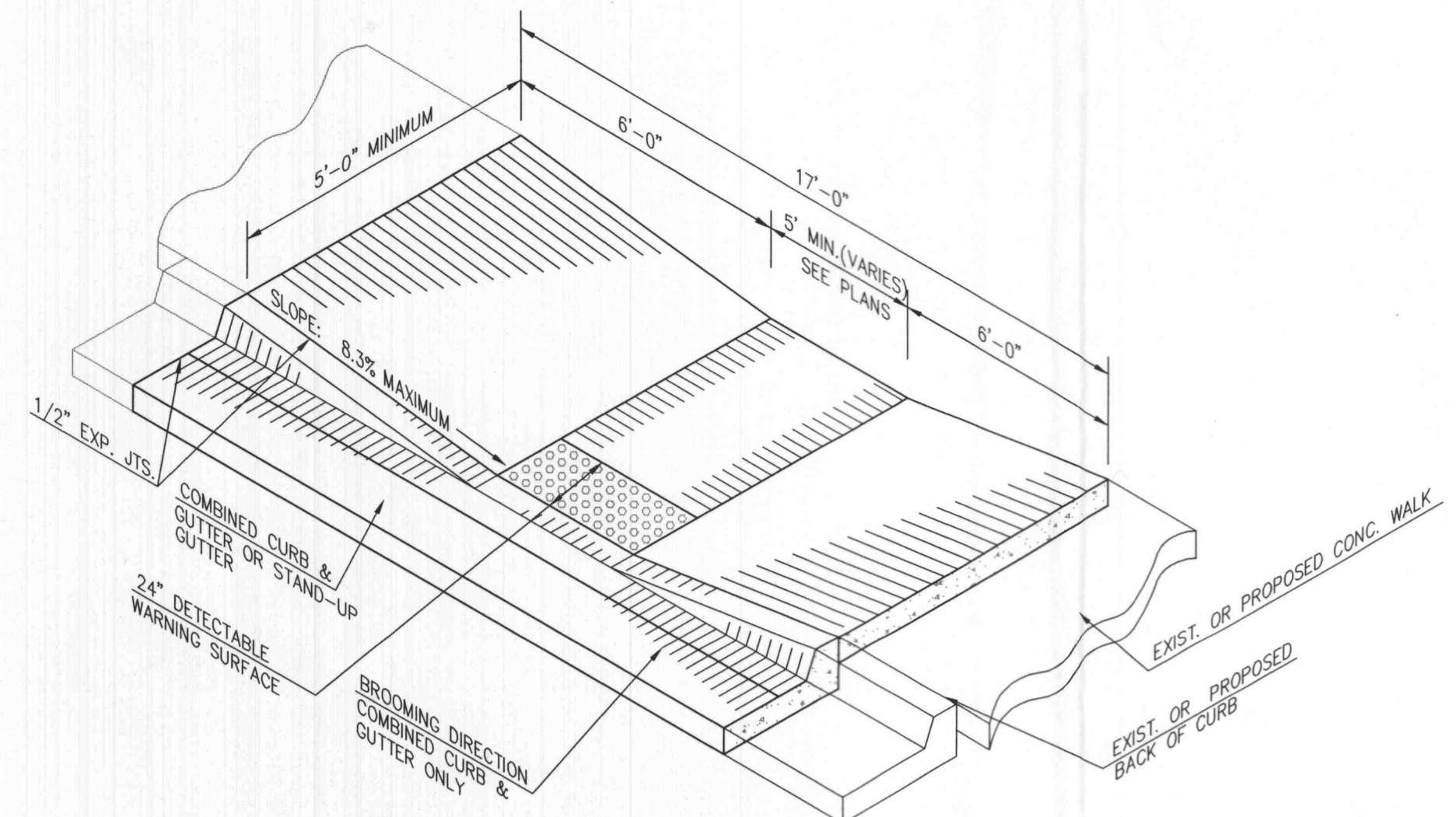
CONCRETE CURB AND GUTTER 001



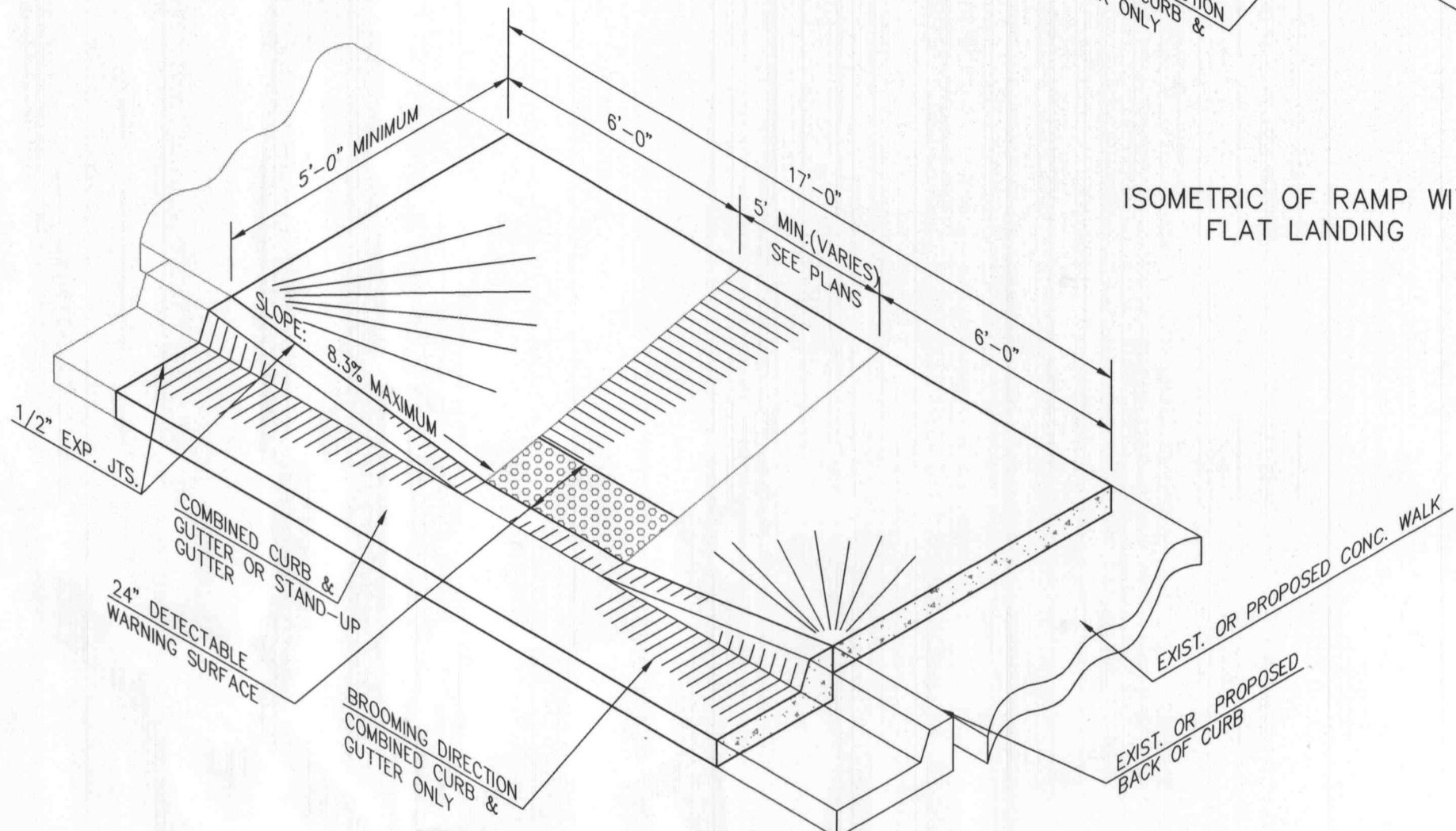
CURB. WALK/CURB (AT BUILDING) 017



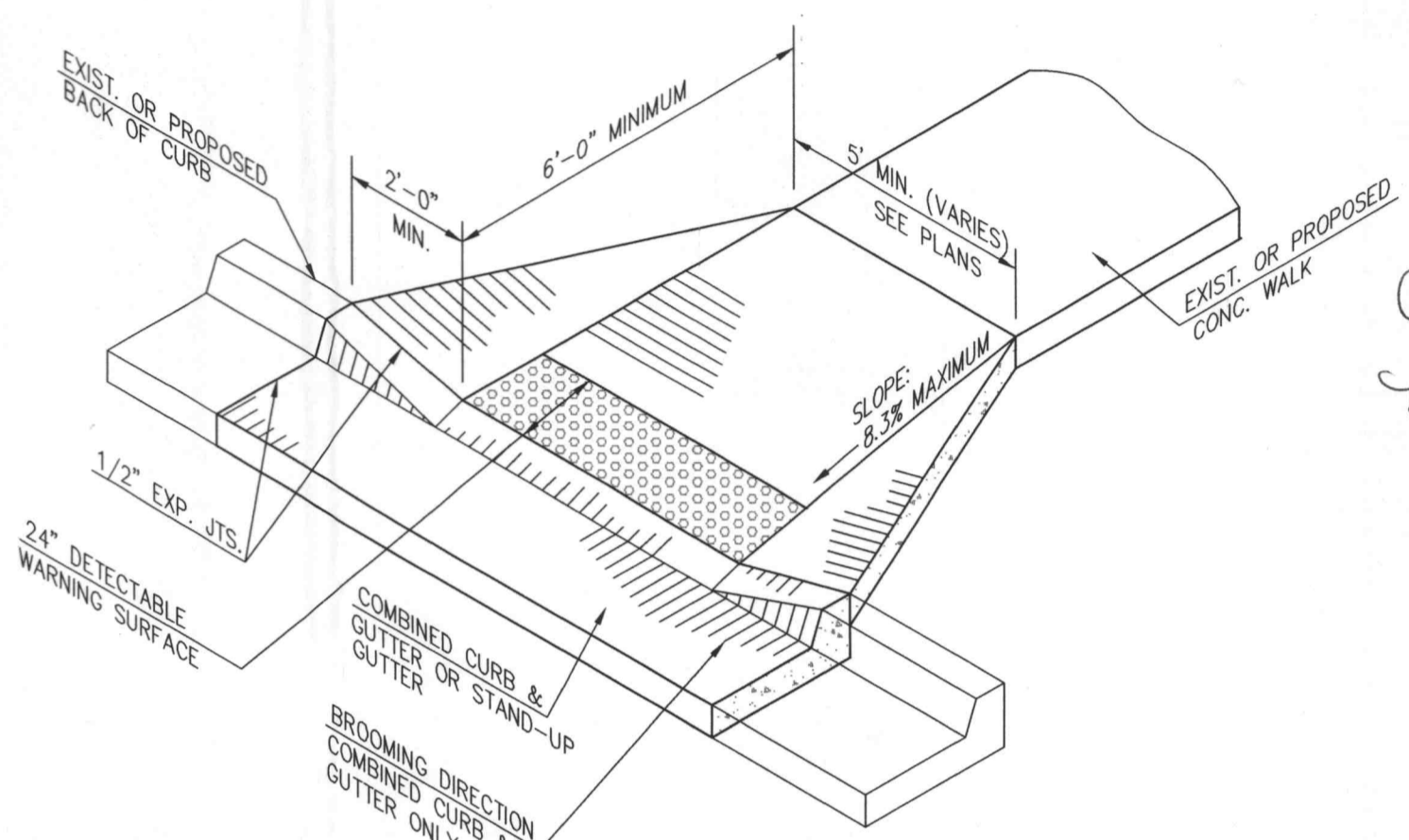
DETECTABLE WARNING SURFACE PATTERN



ISOMETRIC OF RAMP WITH FLAT LANDING



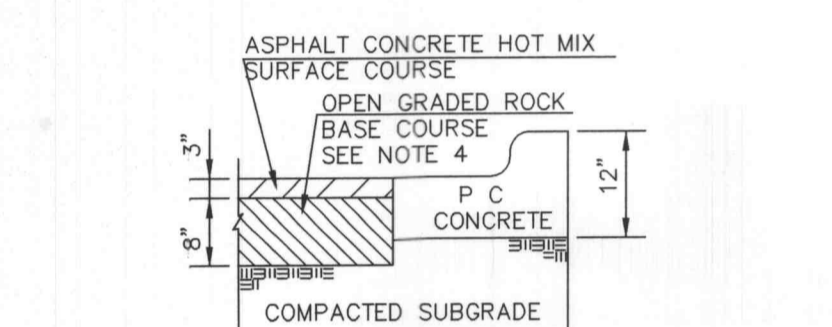
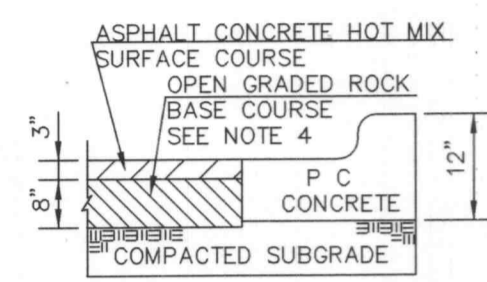
ISOMETRIC OF RAMP WITH ADJACENT WALK SHOWN



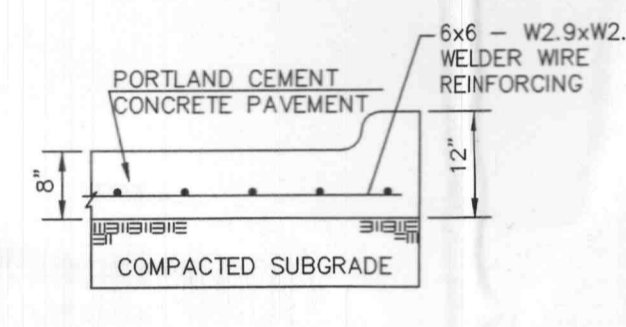
ISOMETRIC OF RAMP WITH PERPENDICULAR WALK SHOWN

SIDEWALK RAMPS 060

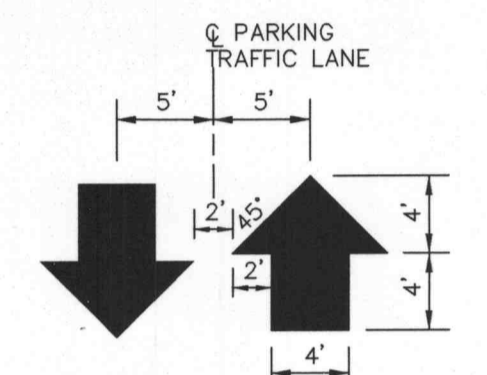
ASPHALT REGULAR DUTY PAVING 040



HEAVY DUTY ASPHALT 041

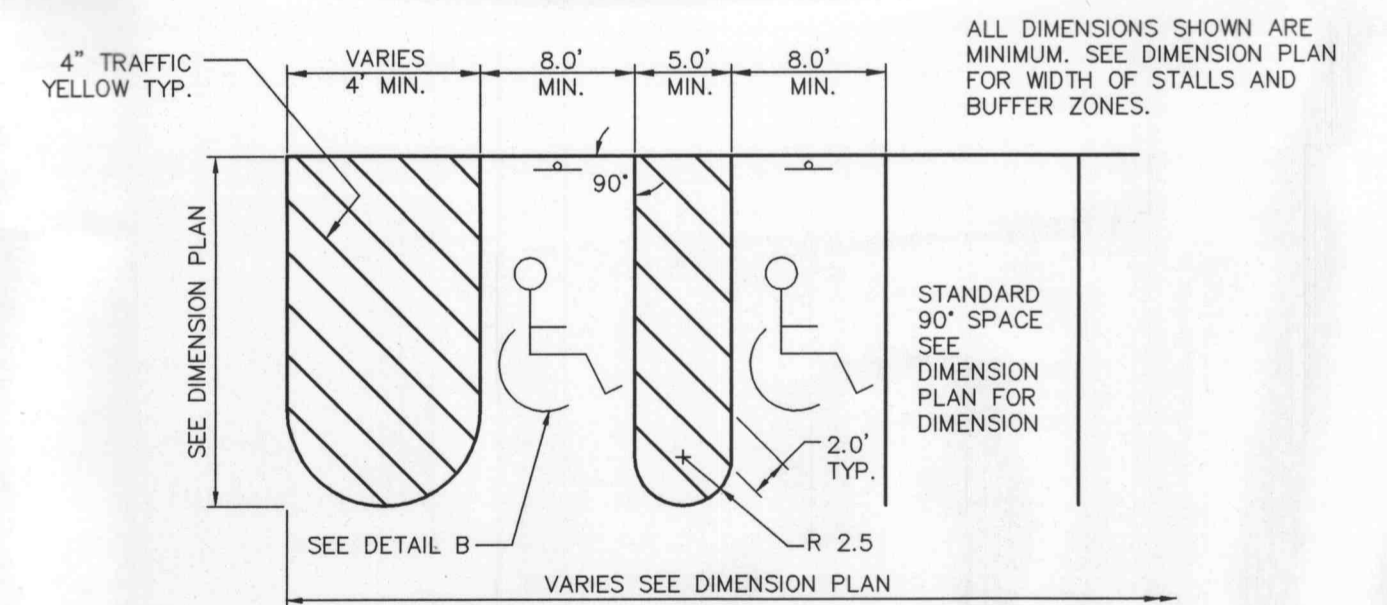


HEAVY DUTY CONCRETE 042

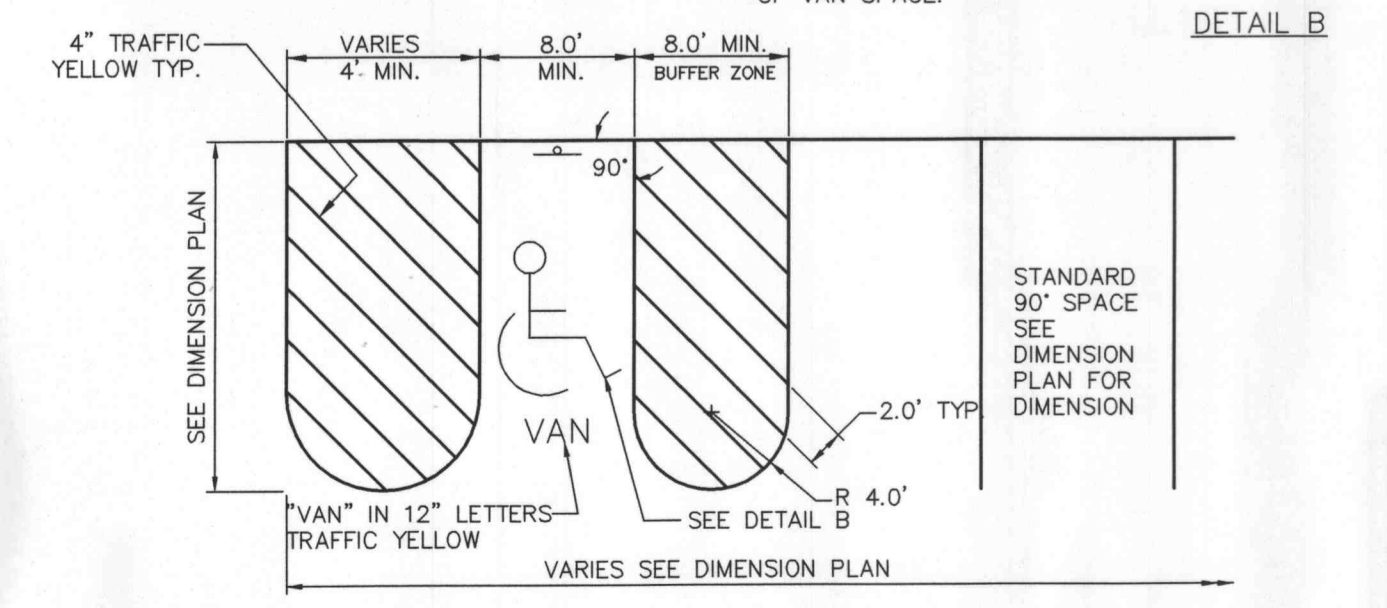


TRAFFIC FLOW ARROW 104

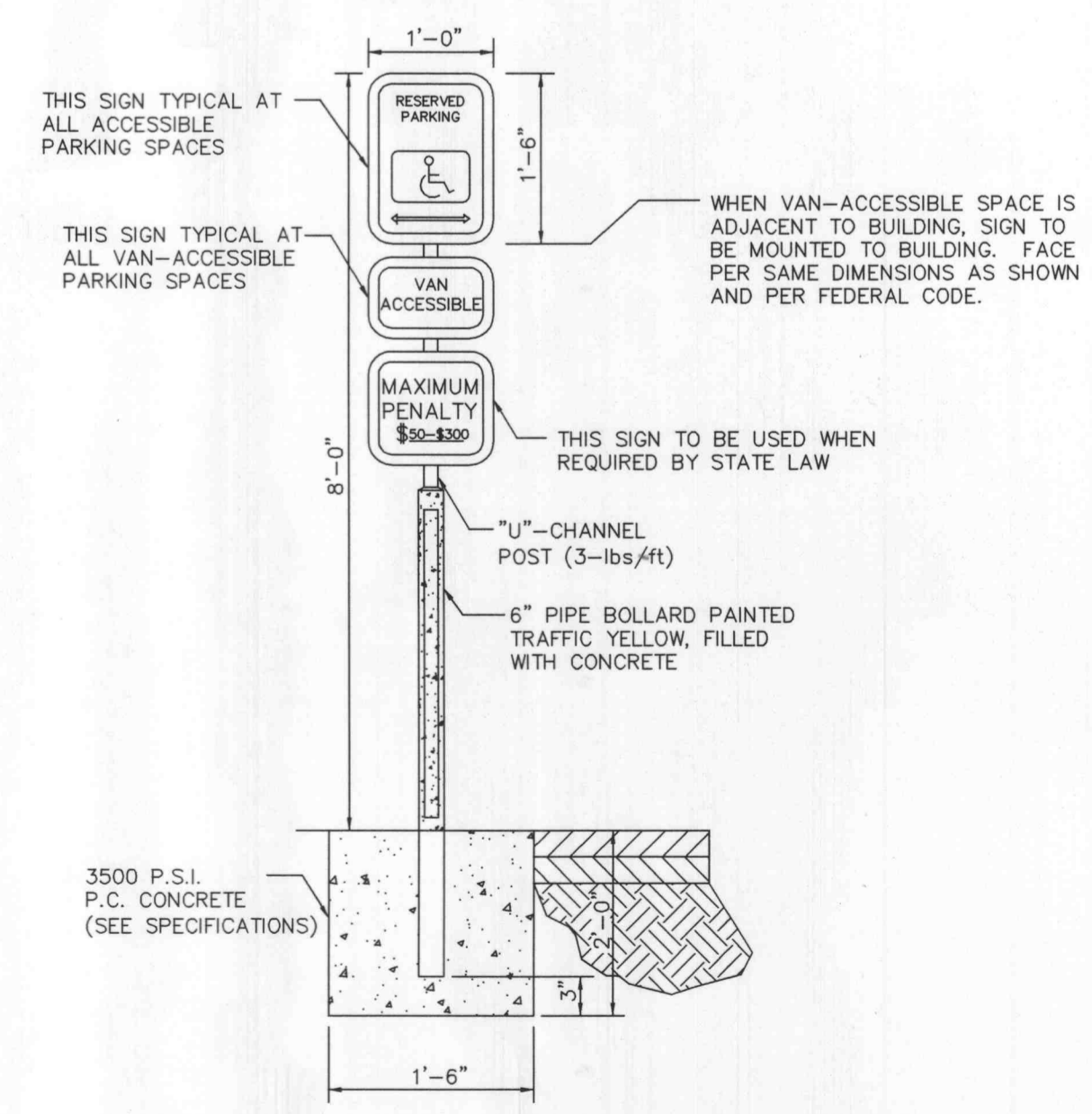
1. FLEXIBLE PAVEMENT SHALL BE IN ACCORDANCE WITH THE LATEST EDITION OF THE MISSOURI DEPARTMENT OF TRANSPORTATION STANDARD SPECIFICATIONS FOR STATE ROAD & BRIDGE CONSTRUCTION.
2. PORTLAND CEMENT CONCRETE SHALL BE TYPE 1 AND HAVE A MINIMUM COMPRESSIVE STRENGTH OF 3000 PSI AT 28 DAYS WITH 6% ENTRAINED AIR ±2% AND SHALL MEET OR EXCEED THE SPECIFICATIONS SET FORTH IN THE LATEST EDITION OF THE MISSOURI DEPARTMENT OF TRANSPORTATION STANDARD SPECIFICATIONS FOR STATE ROAD & BRIDGE CONSTRUCTION.
3. HEAVY DUTY CONCRETE IS AN OPTIONAL PAVEMENT FOR 041 HEAVY DUTY ASPHALT. WHEN PLANS SPECIFY 042 NO ALTERNATES ARE ALLOWED.
4. ALL PAVEMENT RECOMMENDATIONS TAKEN FROM GEOTECHNICAL REPORT FOR O'FALLON'S NATIONAL LEASEHOLD DEVELOPEMENT REPAIRED BY GEOTEST DATED MAY 2000.
5. REFER TO GEOTECHNICAL REPORT REFERENCED IN NOTE 4 ABOVE FOR BASE COURSE PLACEMENT INSTRUCTIONS.



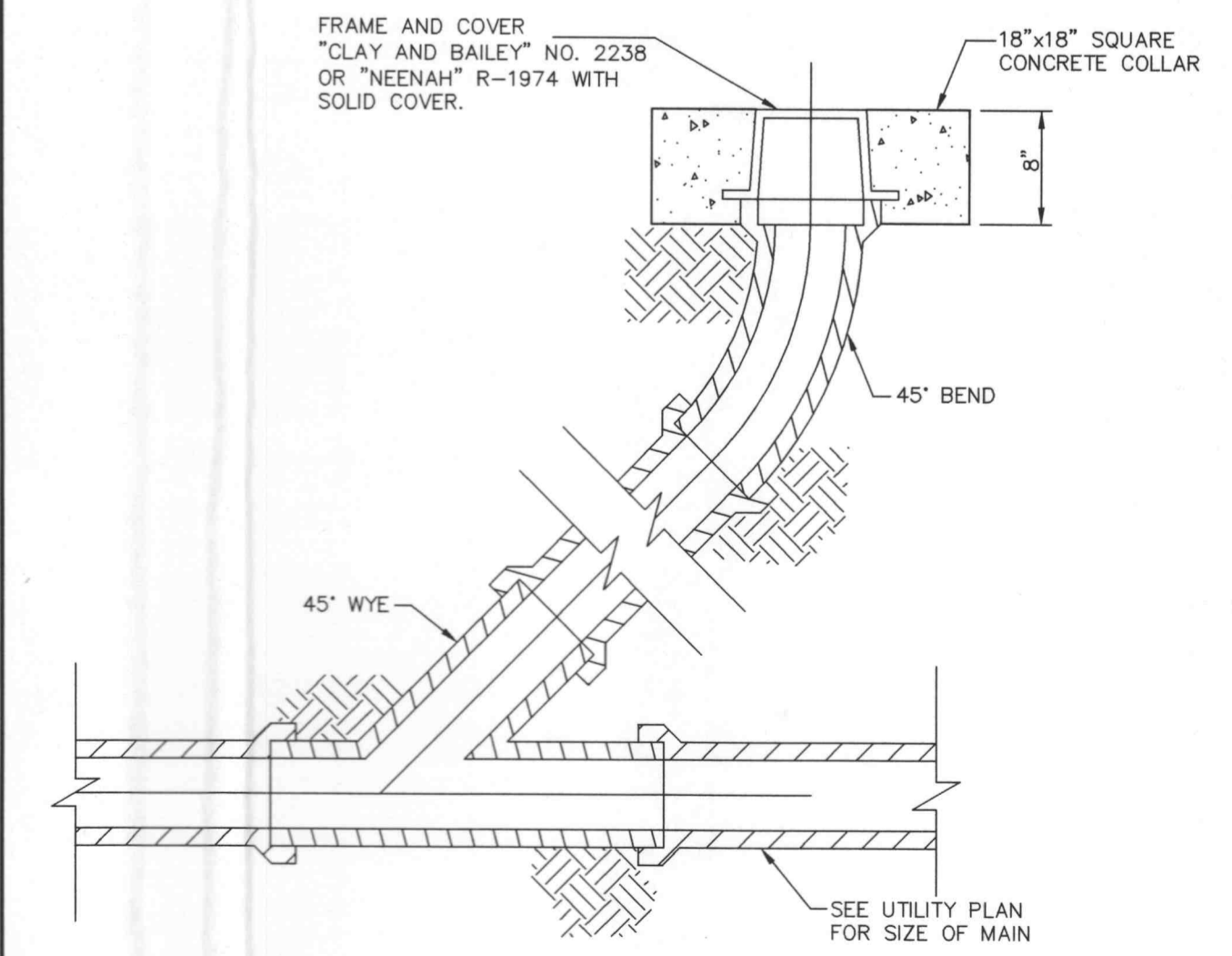
90° ACCESSIBLE SPACE STRIPING 102



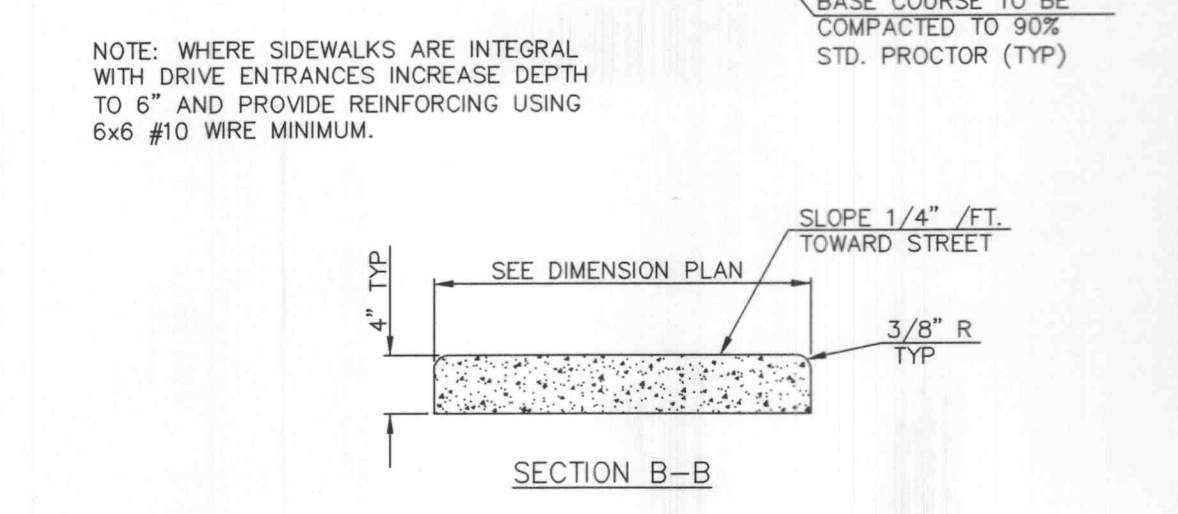
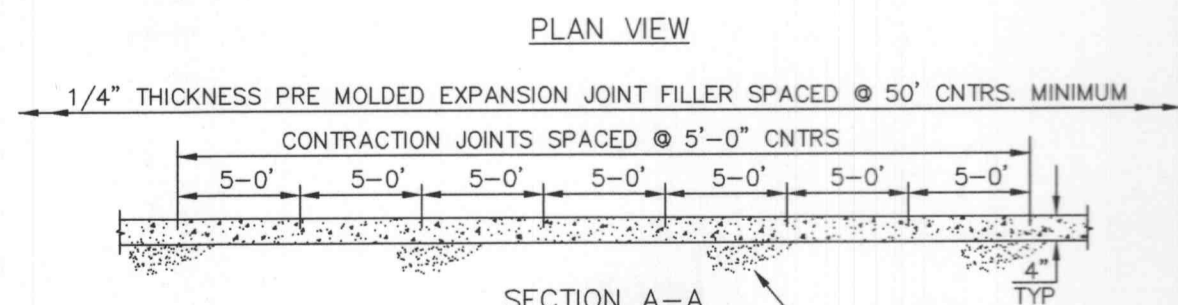
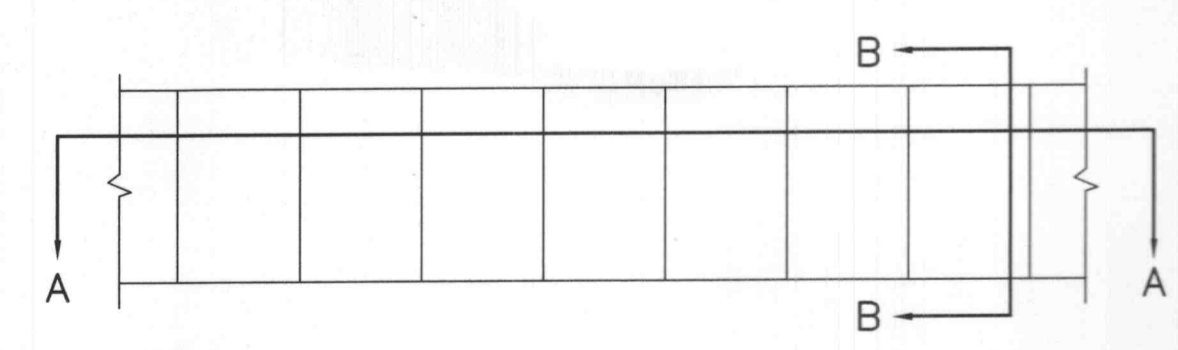
90° ACCESSIBLE & VAN ACCESSIBLE SPACE STRIPING 102



ACCESSIBLE PARKING SIGN 120



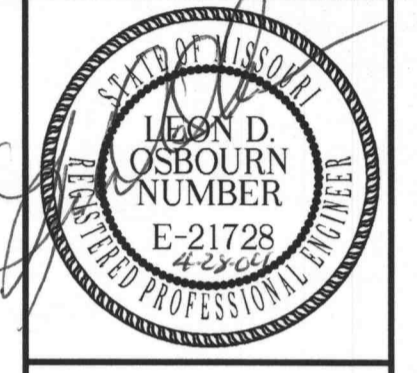
CLEAN-OUT 510



CONCRETE SIDEWALK 055

NOTE: CONCRETE SHALL BE CLASS A WITH THIS DRAWING SHALL NOT BE UTILIZED BY ANY PERSON, FIRM, OR CORPORATION IN WHOLE OR IN PART WITHOUT THE SPECIFIC PERMISSION OF KAW VALLEY ENGINEERING, INC.

REV	DATE	DESCRIPTION
2	0-15-04	REVISED PER CITY COMMENT
1	9-5-03	REVISED PER CITY COMMENT
0	8-11-03	INITIAL ISSUE



2319 NORTH JACKSON
P.O. BOX 1304
JUNCTION CITY, KANSAS 66441
785-762-5040 FAX 785-762-7744
E-MAIL jco@kveeng.com
WEB SITE www.kveeng.com



KAW VALLEY ENGINEERING, INC. - CONSULTING ENGINEERS
Office: Junction City, Mo. Lenexa, Mo.

ARBY'S - O'FALLON
KEATON CROSSING
O'FALLON, MISSOURI
CASE NO.: 00-27.12
DETAIL SHEET

PROJ. NO.	A03_1167
DATE	JUNE 11, 2003
DESIGNER	GAL
DRAWN BY	LRR
CFN	REV
SHEET	1167DET2
	C-10

\\server\dwg\03_1167\DESIGN\1167DET2.dwg, 04/07/2004, 08:53:39 AM, Rebar