

RIGID PIPE: INCLUDES REINFORCED CONCRETE, DUCTILE IRON, & CAST IRON

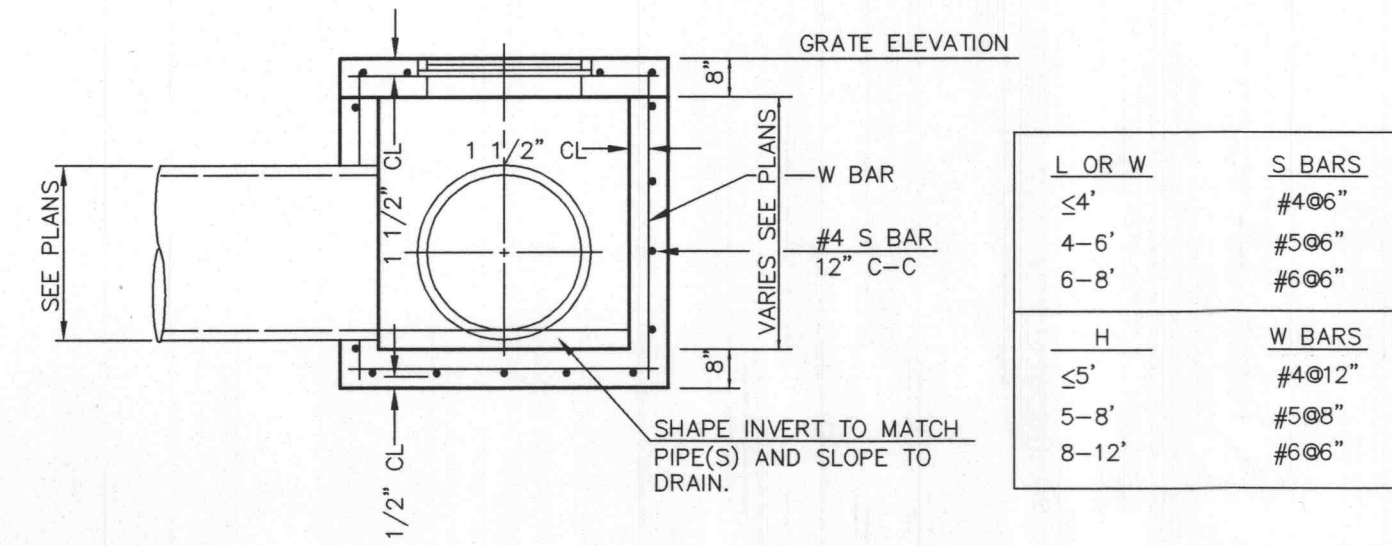
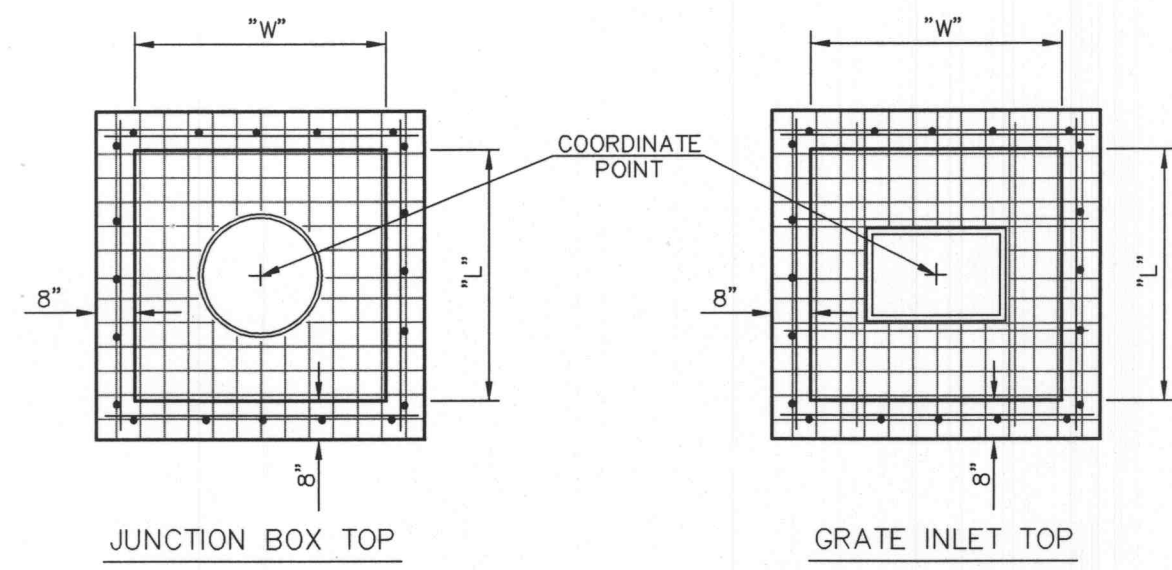
FLEXIBLE PIPE: INCLUDES CORRUGATED METAL PIPE, CORRUGATED POLYETHYLENE PIPE AND/OR POLYVINYL CHLORIDE PIPE.

1. BEDDING MATERIAL SHALL CONFORM TO SECTION 700.590 OF THE CITY OF O'FALLON CODE AND SHALL BE SHAPED TO THE BOTTOM OF THE PIPE.

2. SELECT FILL SHALL BE NATIVE MATERIAL FREE OF LARGE ROCKS, DEBRIS, AND ORGANICS (3"+) AND SHALL BE PLACED IN 8" MAX. LOOSE LIFTS AND COMPACTED IN ACCORDANCE WITH SPECIFICATIONS.

3. SELECT FILL PLACEMENT AND COMPACTION SAME AS FOR RIGID PIPE.

TRENCH AND BEDDING DETAILS 206



ALL CONCRETE: F'C = 3500 P.S.I.

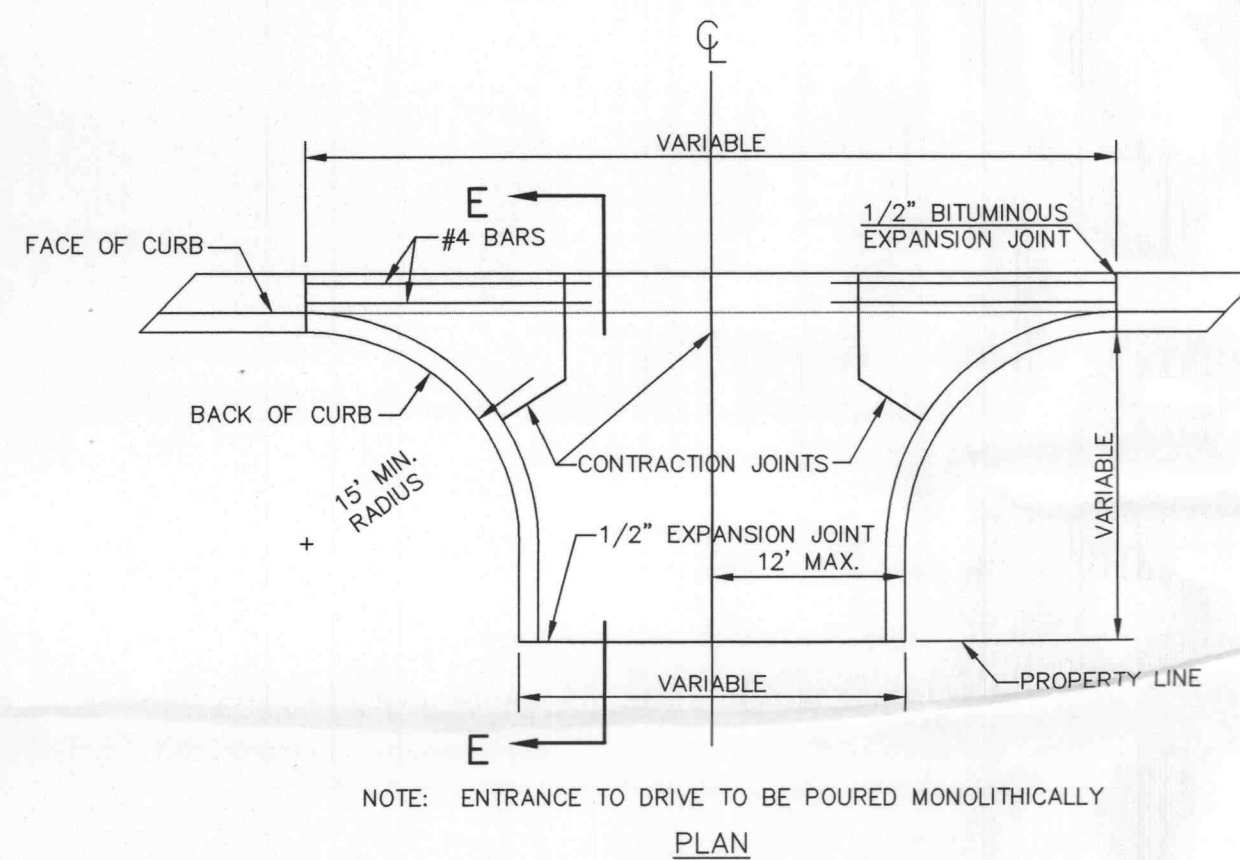
NOTE: WHERE PIPE SIZE ALLOWS, A 4' DIAMETER PRECAST MANHOLE, CONSTRUCTED AND REINFORCED IN ACCORDANCE WITH ANSI/ASTM C478, MAY BE USED IN LIEU OF CAST IN PLACE BOX. ALTERNATE MATERIALS AND CONSTRUCTION METHODS MAY BE USED WITH THE ENGINEER'S APPROVAL.

CASTING NUMBERS ARE NEENAH FOUNDRY. EQUAL SUBSTITUTIONS ARE PERMITTED. JUNCTION BOX LID AND RING - R-6019
GRATE - R-6673-J
UNLESS OTHERWISE NOTED ON SITE GRADING PLAN

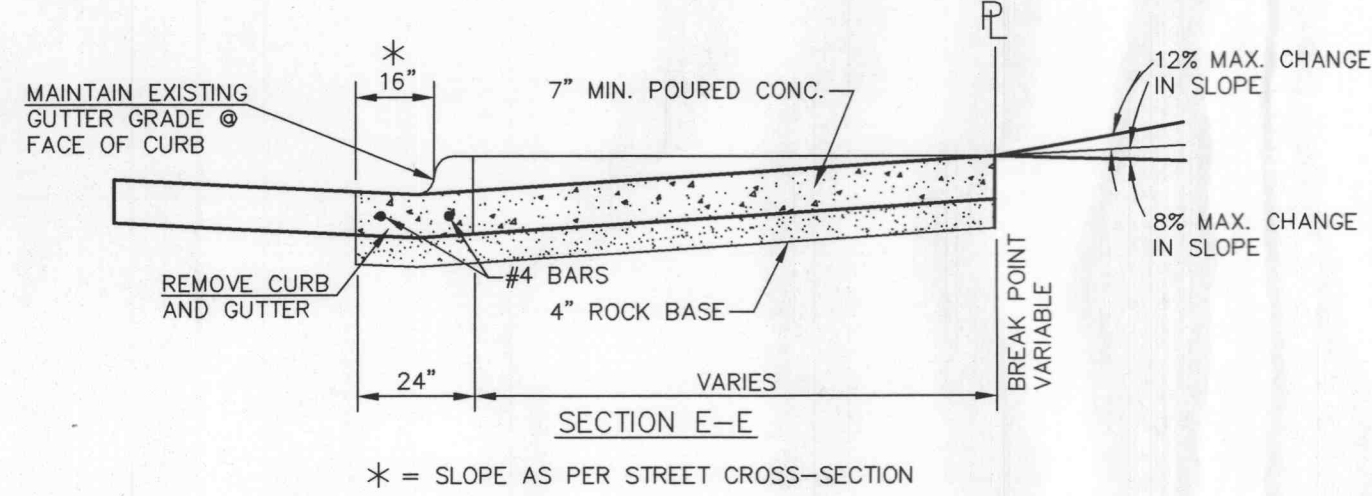
BRICK SHALL NOT BE USED IN THE CONSTRUCTION OF STORM SEWER STRUCTURES

COMPACTED ROCK BACKFILL IS REQUIRED IN THE DISTURBED GROUND AROUND THE STRUCTURE.

GRATE INLET OR JUNCTION BOX 403



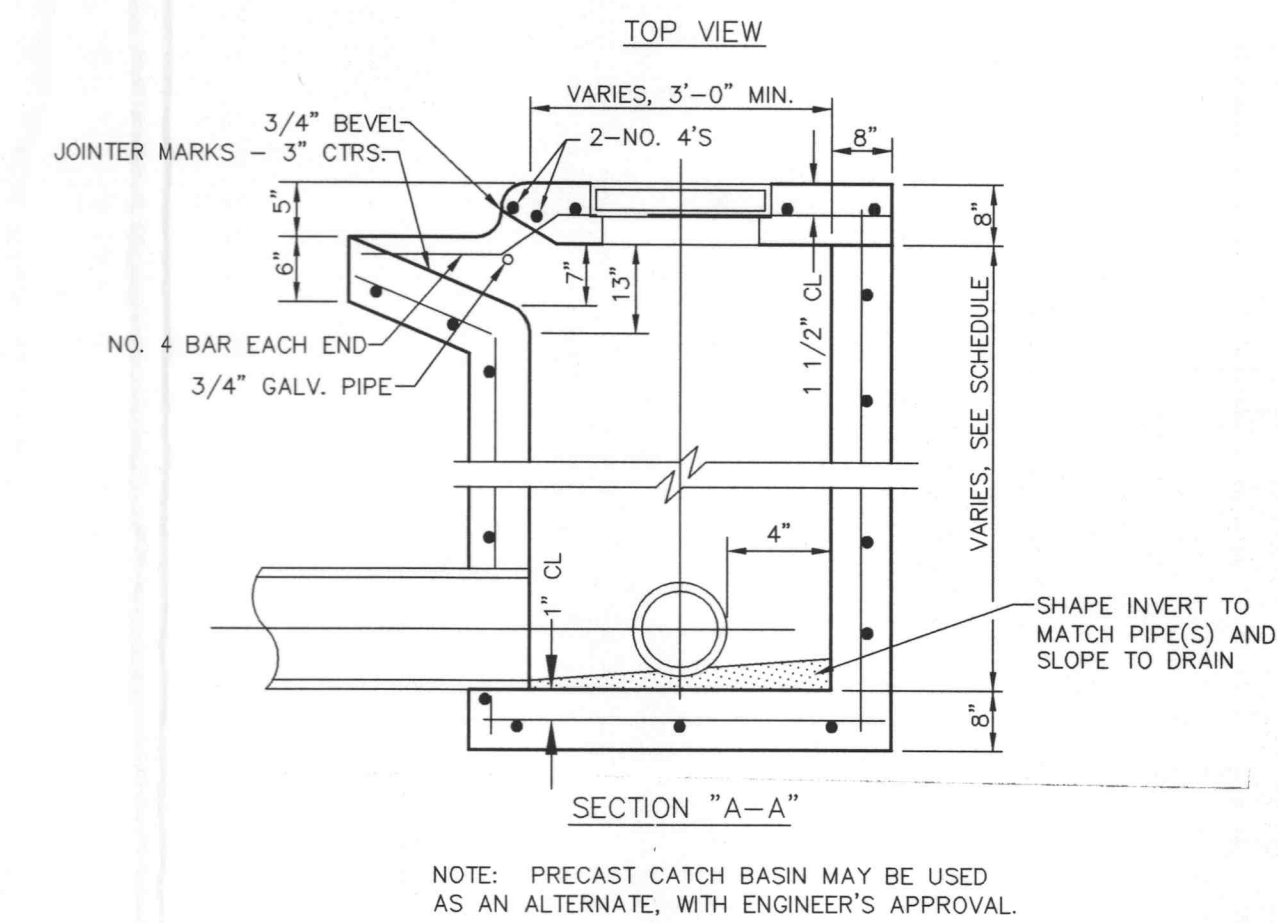
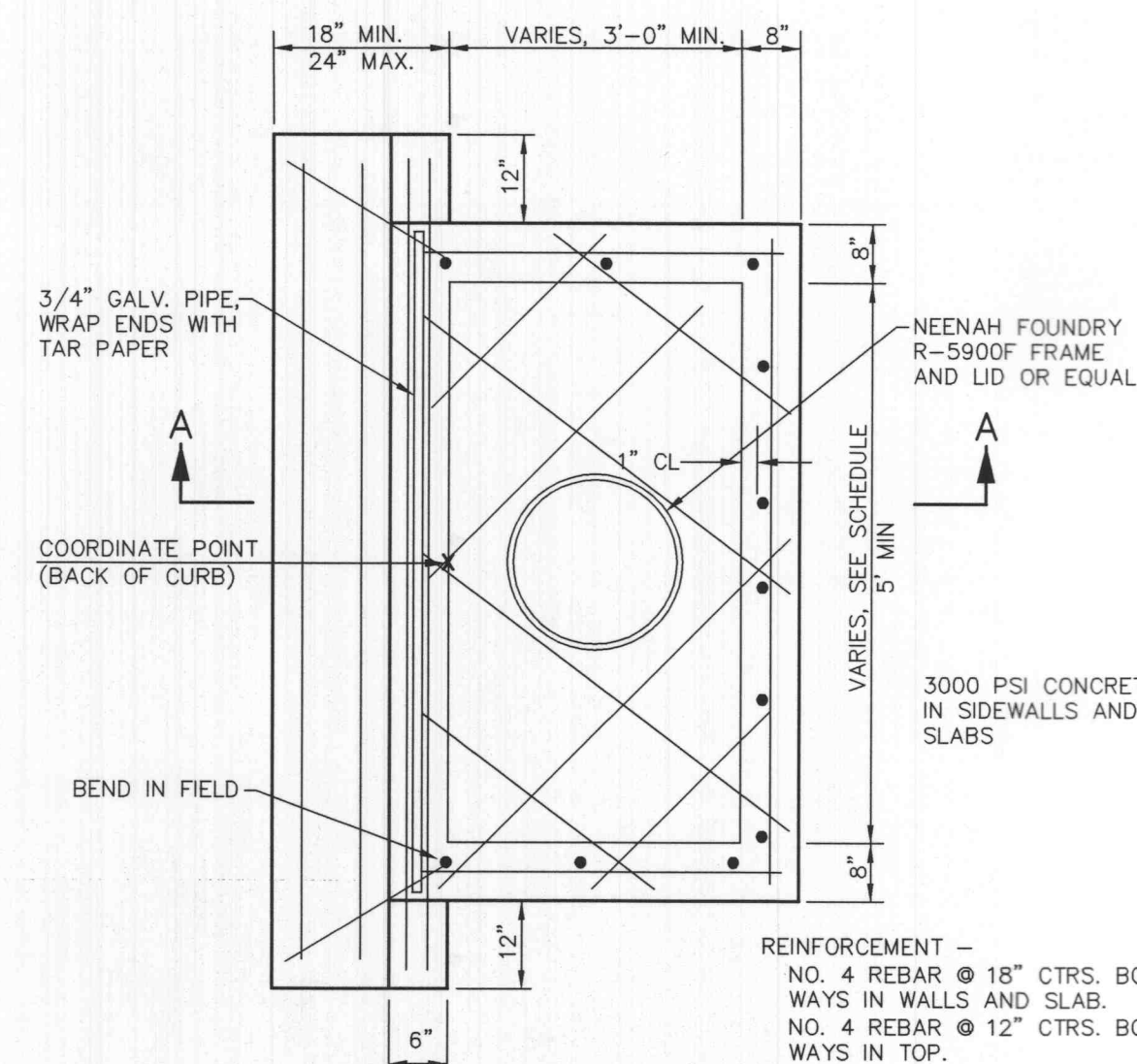
COMMERCIAL & INDUSTRIAL ENTRANCE DRIVE DETAIL 028A



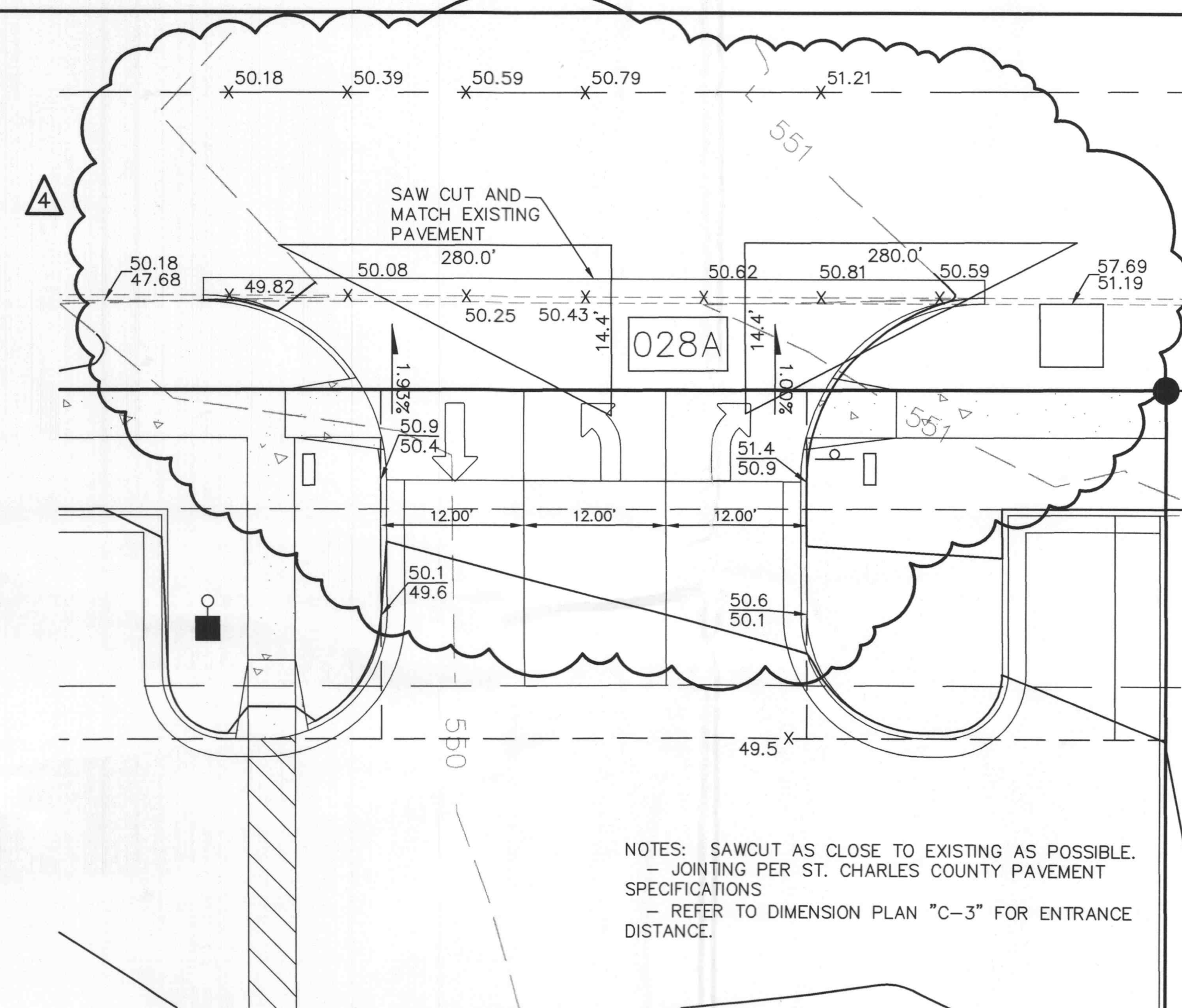
CONCRETE DRAINAGE FLUME 416



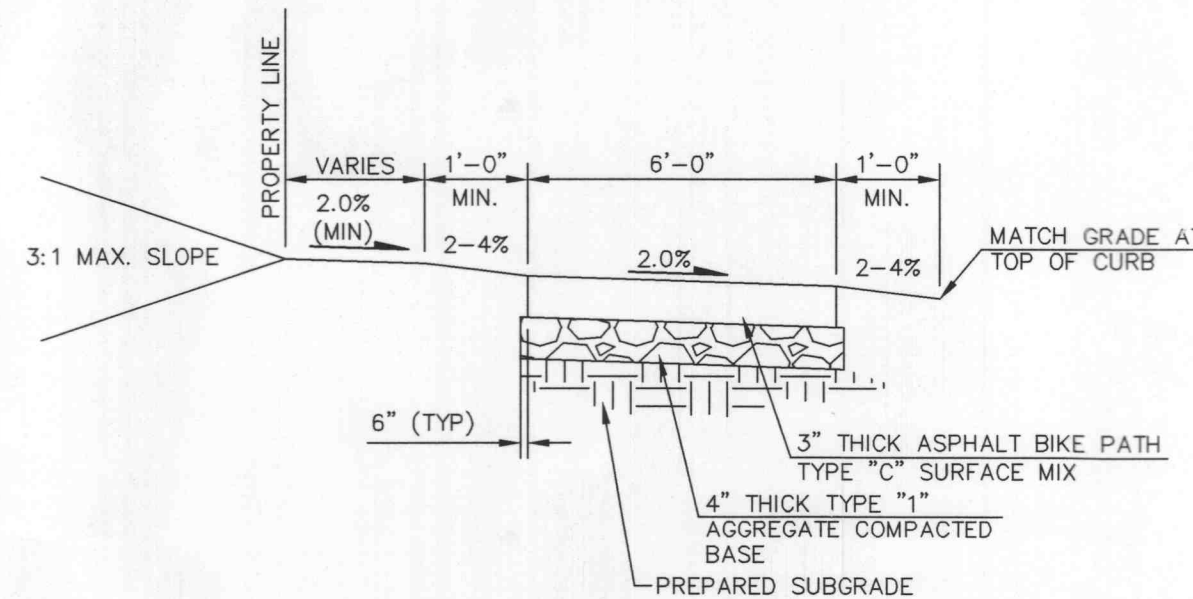
NO.	GUTTER FLOWLINE	OUTLET FLOWLINE	FLUME LENGTH
416-1			
416-2			
416-3			



CURB INLET 402

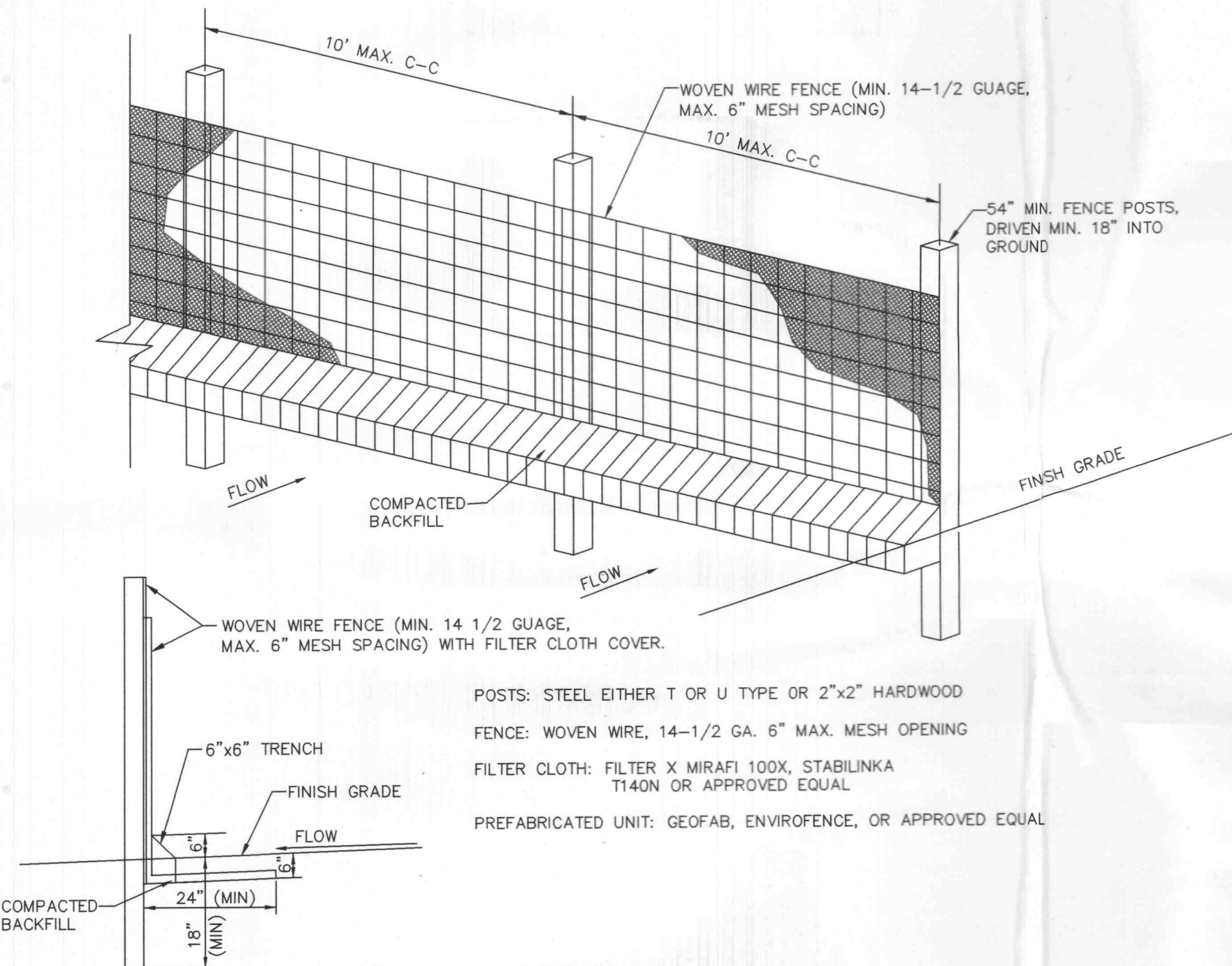


ENLARGED ENTRANCE DETAIL 931

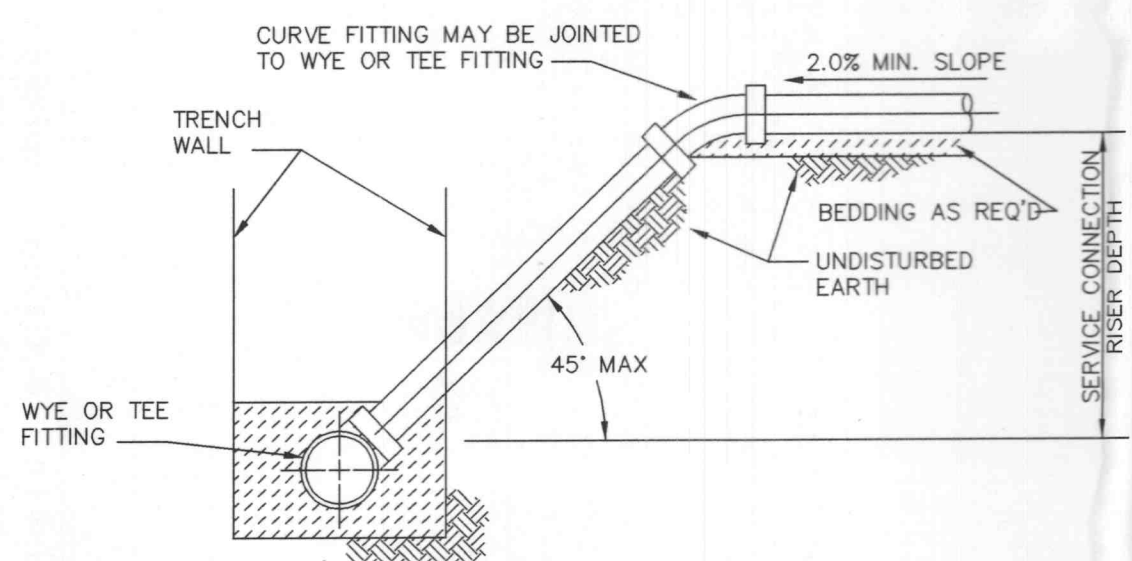


NOTES:
PROVIDE CONCRETE HANDICAP RAMP WHERE TRAIL INTERSECTS ACCESS DRIVES OR STREETS OR WHERE TRAIL INTERSECTS WITH CURBING (SEE PLAN).
PROVIDE STRIPING OR A COLORED TEXTURED PAVEMENT THROUGH THE ACCESS DRIVES OR STREETS INTO DEVELOPMENT.
MAXIMUM SLOPE OF THE PATH SHALL NOT EXCEED 8% AND 2% CROSS SLOPE PER CITY OF O'FALLON SPECIFICATIONS.
THE TRAIL SHALL BE CONSTRUCTED WITH A CONSISTENT SLOPE WITH VERTICAL CURVES A MINIMUM OF 50' IN LENGTH. AFTER FINAL COMPRESSION, THE SURFACE SHALL BE SMOOTH AND TRUE TO THE ESTABLISHED CROWN AND GRADE. ANY LOW OR DEFECTIVE PLACES SHALL IMMEDIATELY BE REMEDIED BY CUTTING OUT THE COURSE COURSE AT SUCH SPOTS AND REPLACING IT WITH FRESH HOT MIXTURE, WHICH SHALL BE IMMEDIATELY COMPACTED TO CONFORM WITH THE SURROUNDING AREA AND SHALL BE SET FREE FROM DEPRESSIONS EXCEEDING ONE-EIGHTH INCH AS MEASURED WITH A TEN-FOOT STRAIGHT EDGE PARALLELING THE CENTERLINE OF THE TRAIL.

MULTI-USE PATH DETAIL 930

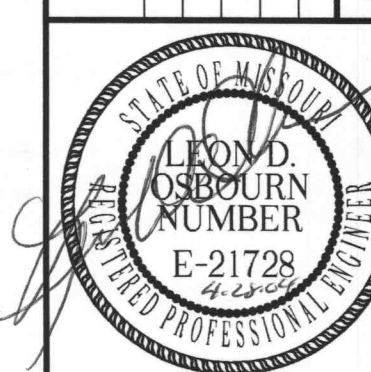


SEDIMENTATION FENCE 804



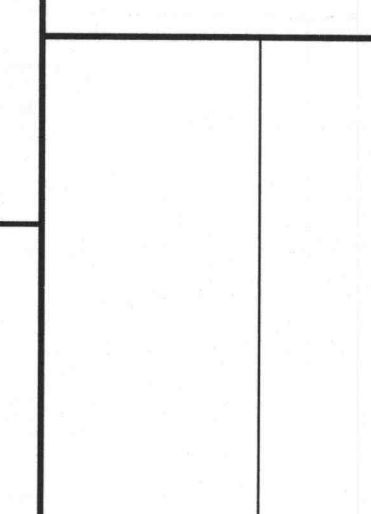
SEWER SERVICE CONNECTION DETAIL 512

REV	DATE	DESCRIPTION	DSN	DWN	CHK
4	3-15-04	REVISED PER CITY COMMENT			
3	11-20-03	REVISED PER CITY COMMENT			
2	9-9-03	REVISED PER CITY COMMENT			
1	8-11-03	REVISED PER SITE RELOCATION			
0	6-11-03	INITIAL ISSUE			



2319 NORTH JACKSON
P.O. BOX 1304
JUNCTION CITY, KANSAS 66441
785-762-5040 FAX 785-762-7744
E-MAIL jsek@kveing.com
WWW SITE www.kveing.com

KAW VALLEY ENGINEERING, INC. - CONSULTING ENGINEERS
Offices: Junction City, Ks., Kansas City, Mo., Lenexa, Ks.



ARBYS - O'FALLON
KEATON CROSSING
O'FALLON, MISSOURI

CASE NO.: 00-27.12
DETAIL SHEET

PROJ. NO.	A03-1167
DATE	JUNE 11, 2003
DESIGNER	GAL
DRAWN BY	LRR
CFN	REV
SHEET	1167DET2
	C-11
	4