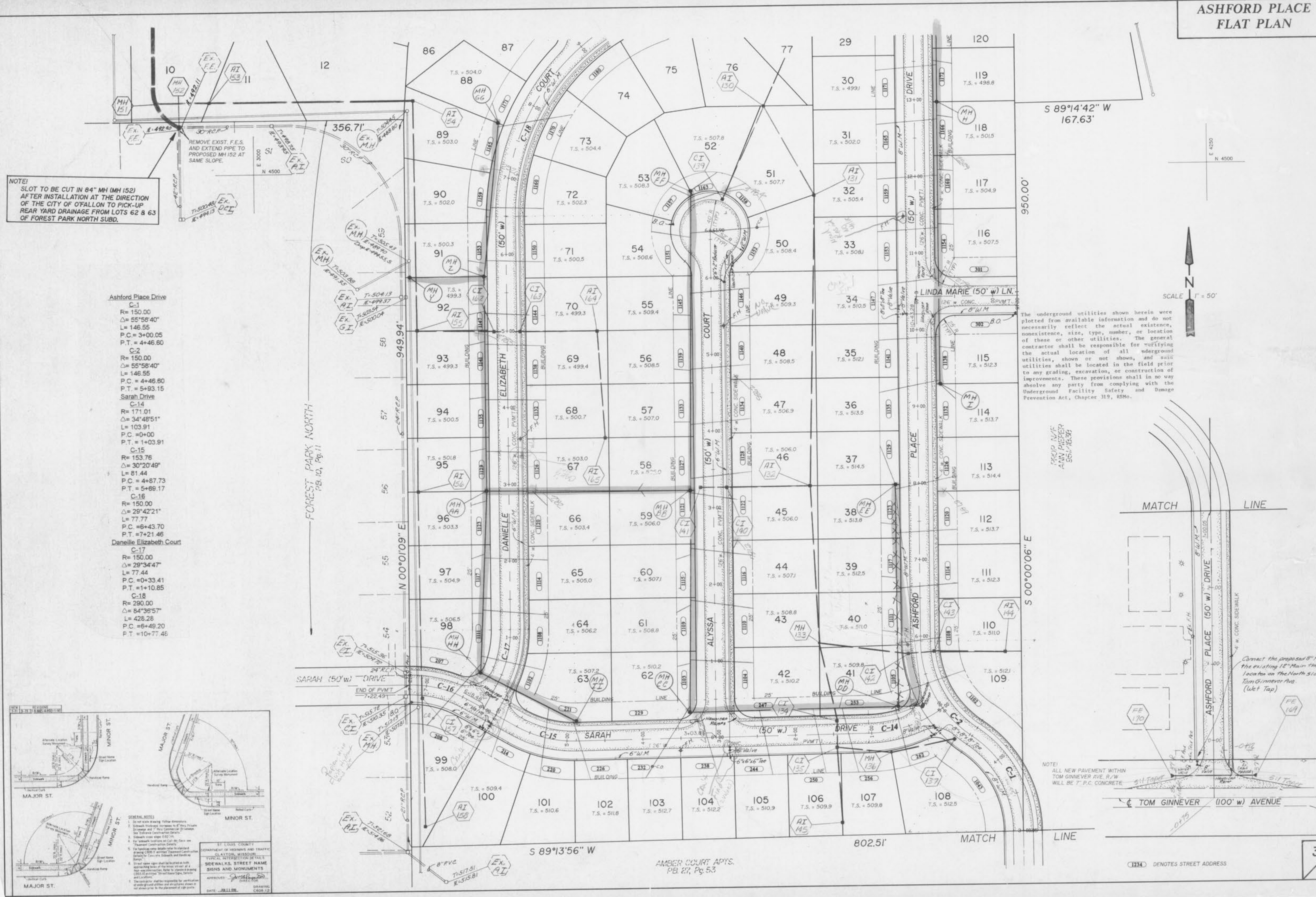


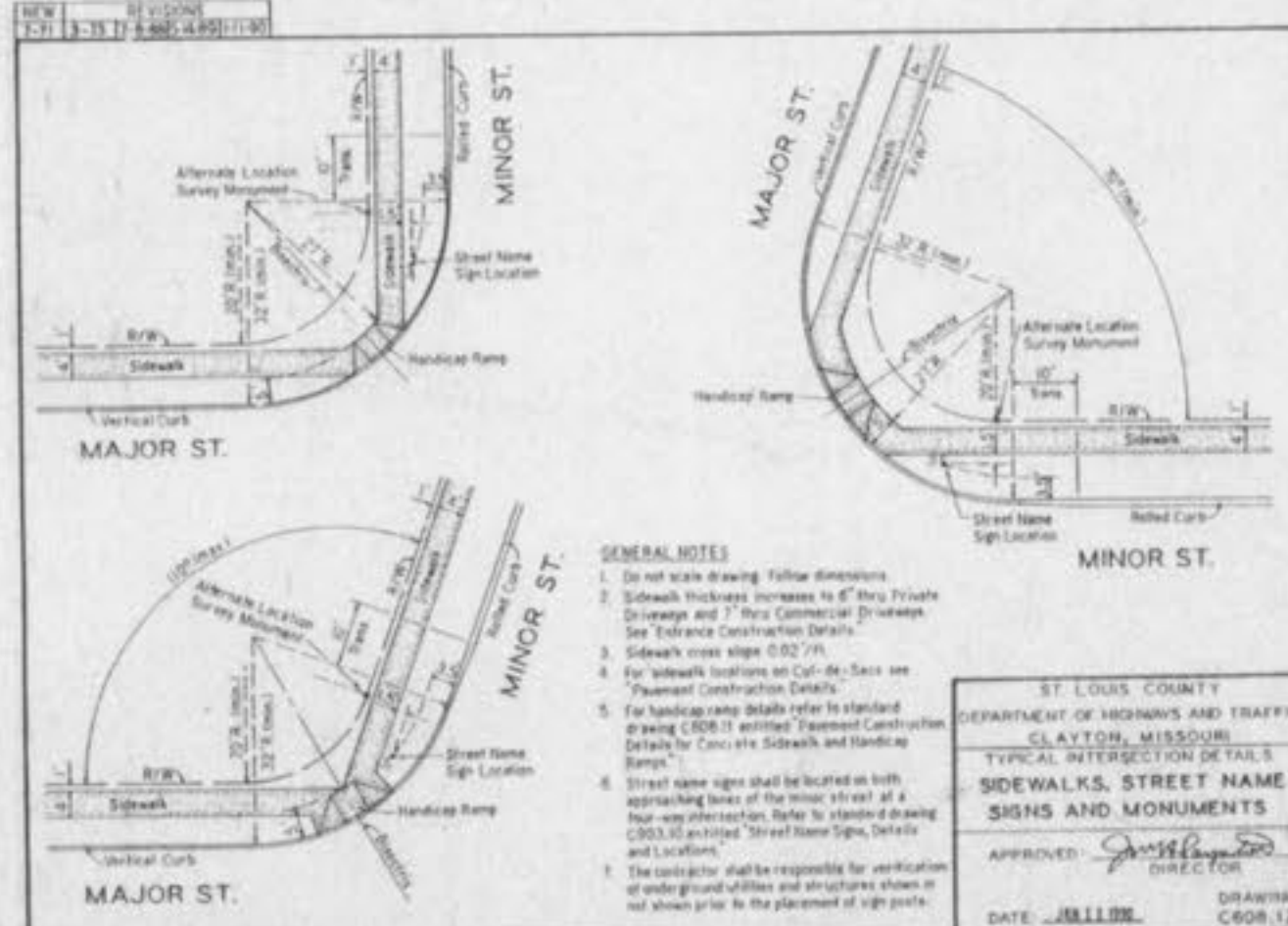
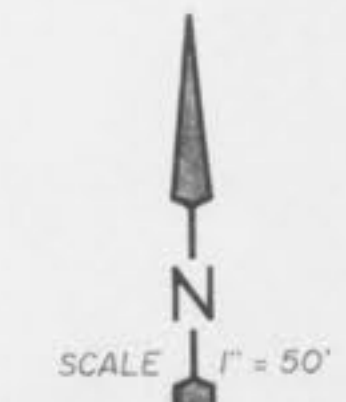
**ASHFORD PLACE
FLAT PLAN**



NOTE!
SLOT TO BE CUT IN 8" MH (MH 152)
AFTER INSTALLATION AT THE DIRECTION
OF THE CITY OF FALLON TO PICK-UP
REAR YARD DRAINAGE FROM LOTS 62 & 63
OF FOREST PARK NORTH SUBD.

- Ashford Place Drive**
C-1
R= 150.00
Δ= 55°58'40"
L= 146.55
P.C.= 3+00.05
P.T.= 4+46.60
- C-2
R= 150.00
Δ= 55°58'40"
L= 146.55
P.C.= 4+46.60
P.T.= 5+93.15
- Sarah Drive**
C-14
R= 171.01
Δ= 34°48'51"
L= 103.91
P.C.= 0+00.00
P.T.= 1+03.91
- C-15
R= 153.76
Δ= 30°20'49"
L= 81.44
P.C.= 4+87.73
P.T.= 5+69.17
- C-16
R= 150.00
Δ= 29°42'21"
L= 77.77
P.C.= 6+43.70
P.T.= 7+21.46
- Danielle Elizabeth Court**
C-17
R= 150.00
Δ= 29°34'47"
L= 77.44
P.C.= 0+33.41
P.T.= 1+10.85
- C-18
R= 290.00
Δ= 84°36'57"
L= 428.28
P.C.= 6+49.20
P.T.= 10+77.46

The underground utilities shown herein were plotted from available information and do not necessarily reflect the actual existence, nonexistence, size, type, number, or location of these or other utilities. The general contractor shall be responsible for verifying the actual location of all underground utilities, shown or not shown, and said utilities shall be located in the field prior to any grading, excavation, or construction of improvements. These provisions shall in no way absolve any party from complying with the Underground Facility Safety and Damage Prevention Act, Chapter 319, RSMo.

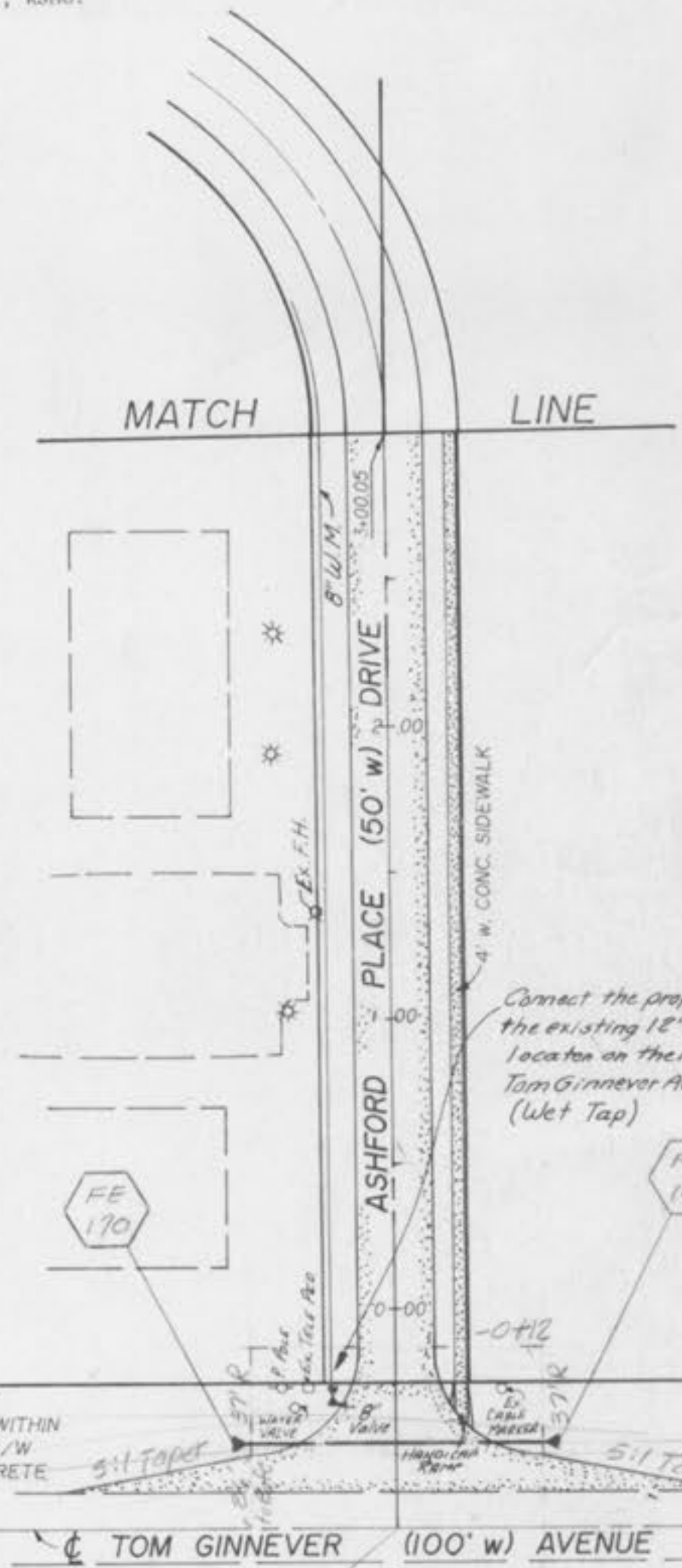


GENERAL NOTES

1. Do not scale drawing for dimensions.
2. Sidewalk thickness increases to 6" from 4" at curb and 7" from 4" at driveway.
3. Sidewalk slope shall be 2.00%.
4. For sidewalk details refer to standard plans C-1 through C-18.
5. For sidewalk details refer to standard plans C-19 through C-22.
6. Street name signs shall be located on both sides of the street at the intersection of the street with the street name sign, street name sign, and street name sign.
7. The contractor shall be responsible for verification of existing underground utilities and structures shown or not shown prior to the placement of any pipe.

ST. LOUIS COUNTY
DEPARTMENT OF HIGHWAYS AND TRAFFIC
CLAYTON, MISSOURI
TYPICAL INTERSECTION OF TWO
SIDEWALKS, STREET NAME
SIGNS AND MONUMENTS
APPROVED: [Signature]
DATE: 08/11/08 DRAWING
C808.12

PROD. BY
ANN DIERFER
5/6/10



NOTE!
ALL NEW PAVEMENT WITHIN
TOM GINNER AV. R/W
WILL BE 7" P.C. CONCRETE

AMBER COURT APTS.
PB. 27, Pg. 53