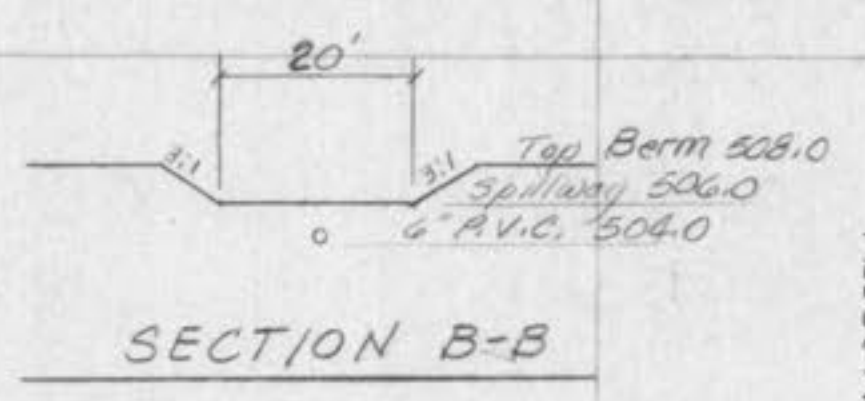
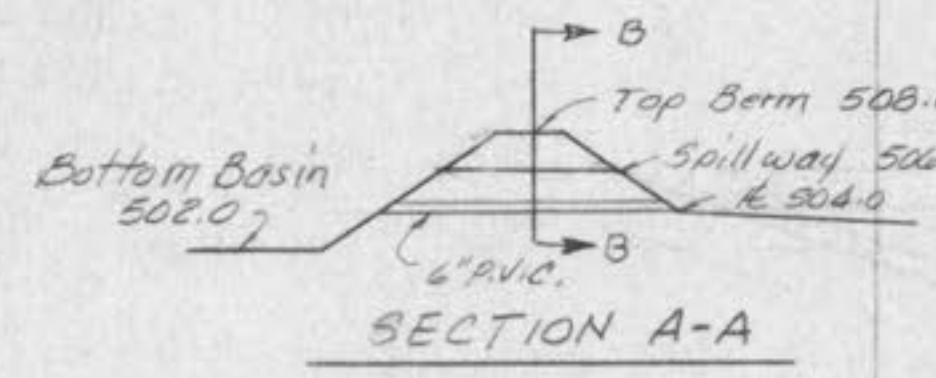
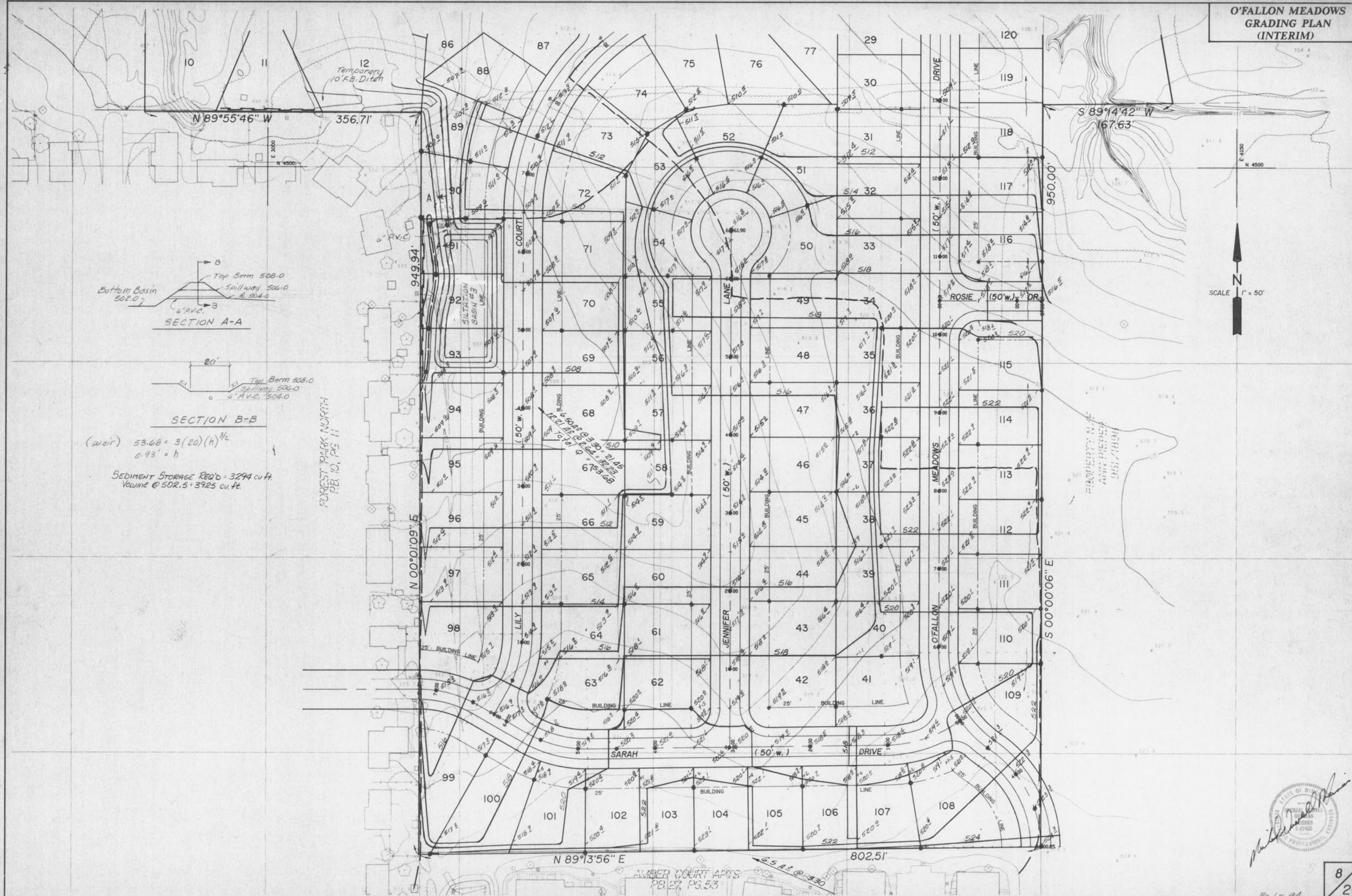


O'FALLON MEADOWS
GRADING PLAN
(INTERIM)



(weir) $53.68 = 3(20)(h)^{3/2}$
 $0.93' = h$
SEDIMENT STORAGE REQ'D = 3294 cu ft.
Volume @ 5DR.5 = 3925 cu ft.

FOREST PARK NORTH
P.B. 10, PG. 11

