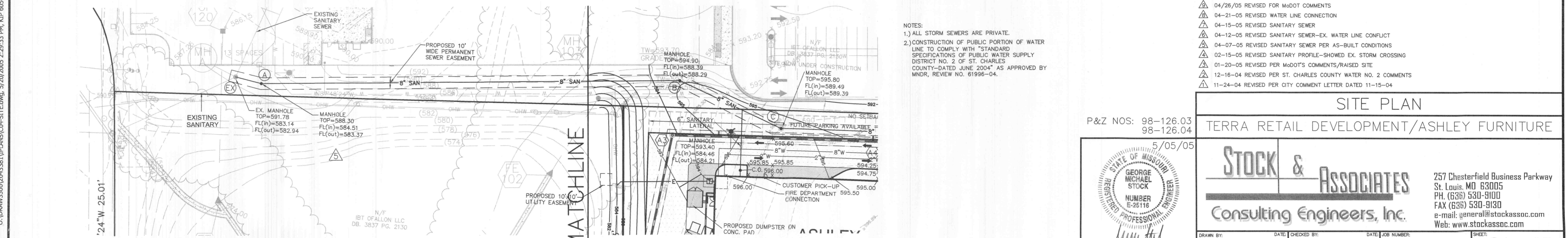
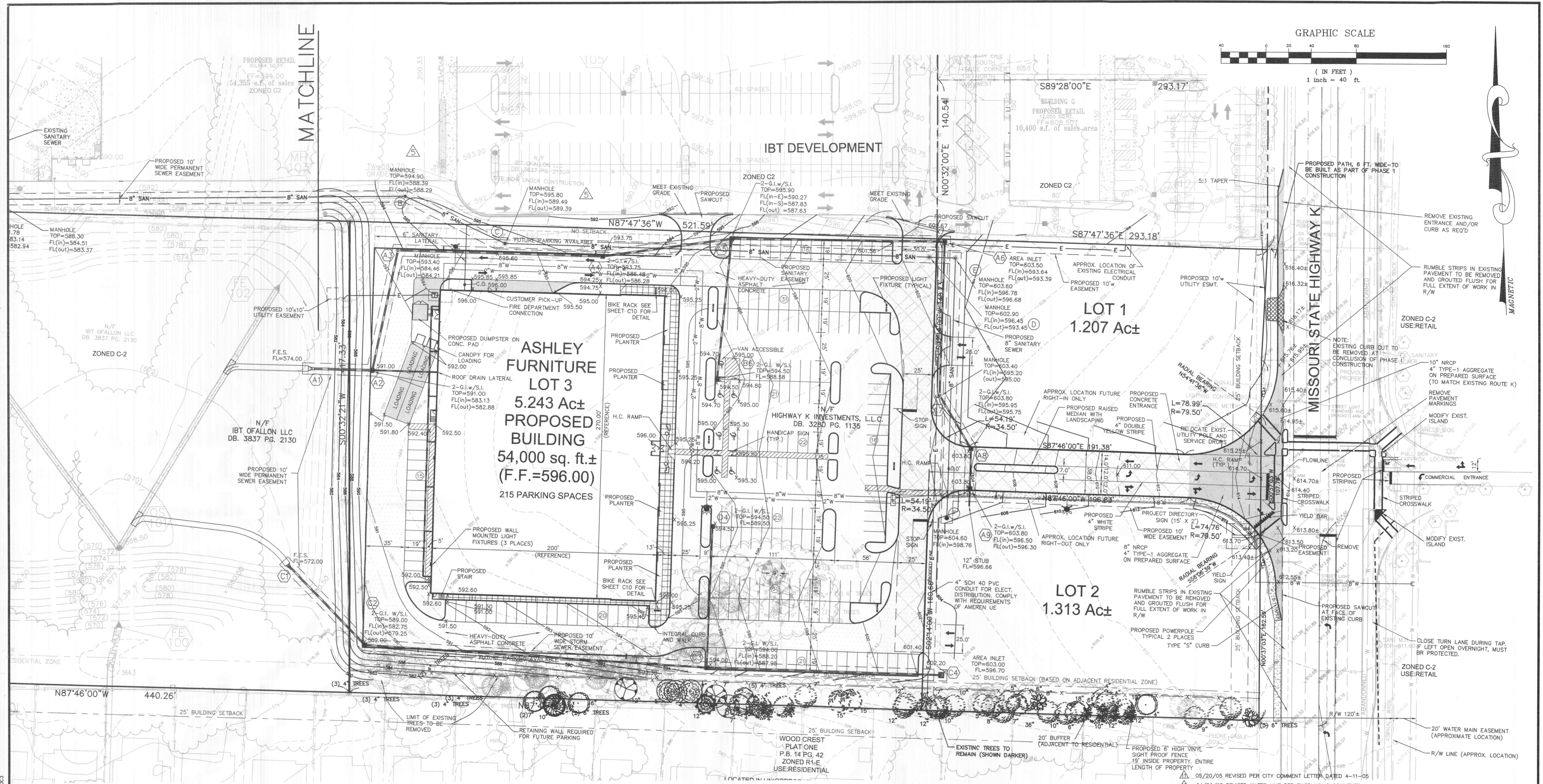


( IN FEET )  
1 inch = 40 ft.

MATCHLINE

MAGNETIC



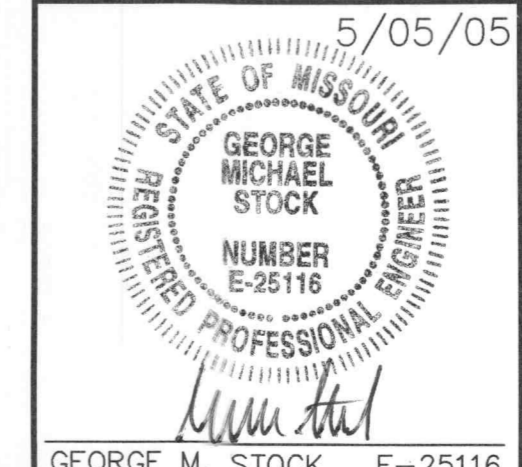
- NOTES:
- 1) ALL STORM SEWERS ARE PRIVATE.
  - 2) CONSTRUCTION OF PUBLIC PORTION OF WATER LINE TO COMPLY WITH "STANDARD SPECIFICATIONS OF PUBLIC WATER SUPPLY DISTRICT NO. 2 OF ST. CHARLES COUNTY-DATED JUNE 2004" AS APPROVED BY MNDR, REVIEW NO. 61996-04.

- ▲ 05/20/05 REVISED PER CITY COMMENT LETTER DATED 4-11-05
- ▲ 04/29/05 REVISED WATER LINE PER PWSD NO. 2 COMMENTS
- ▲ 04/26/05 REVISED FOR MODOT COMMENTS
- ▲ 04-21-05 REVISED WATER LINE CONNECTION
- ▲ 04-15-05 REVISED SANITARY SEWER
- ▲ 04-12-05 REVISED SANITARY SEWER-EX. WATER LINE CONFLICT
- ▲ 04-07-05 REVISED SANITARY SEWER PER AS-BUILT CONDITIONS
- ▲ 02-15-05 REVISED SANITARY PROFILE-SHOWED EX. STORM CROSSING
- ▲ 01-20-05 REVISED PER MODOT'S COMMENTS/RAISED SITE
- ▲ 12-16-04 REVISED PER ST. CHARLES COUNTY WATER NO. 2 COMMENTS
- ▲ 11-24-04 REVISED PER CITY COMMENT LETTER DATED 11-15-04

SITE PLAN

TERRA RETAIL DEVELOPMENT/ASHLEY FURNITURE

P&Z NOS: 98-126.03  
98-126.04



**Stock & Associates**  
Consulting Engineers, Inc.

257 Chesterfield Business Parkway  
St. Louis MO 63005  
PH. (636) 530-9100  
FAX (636) 530-9130  
e-mail: general@stockassoc.com  
Web: www.stockassoc.com

C:\DRAWING\300\2043381\PLANS\CD\SITE.dwg, 5/20/2005 2:29:33 PM, KIP 6054.PC