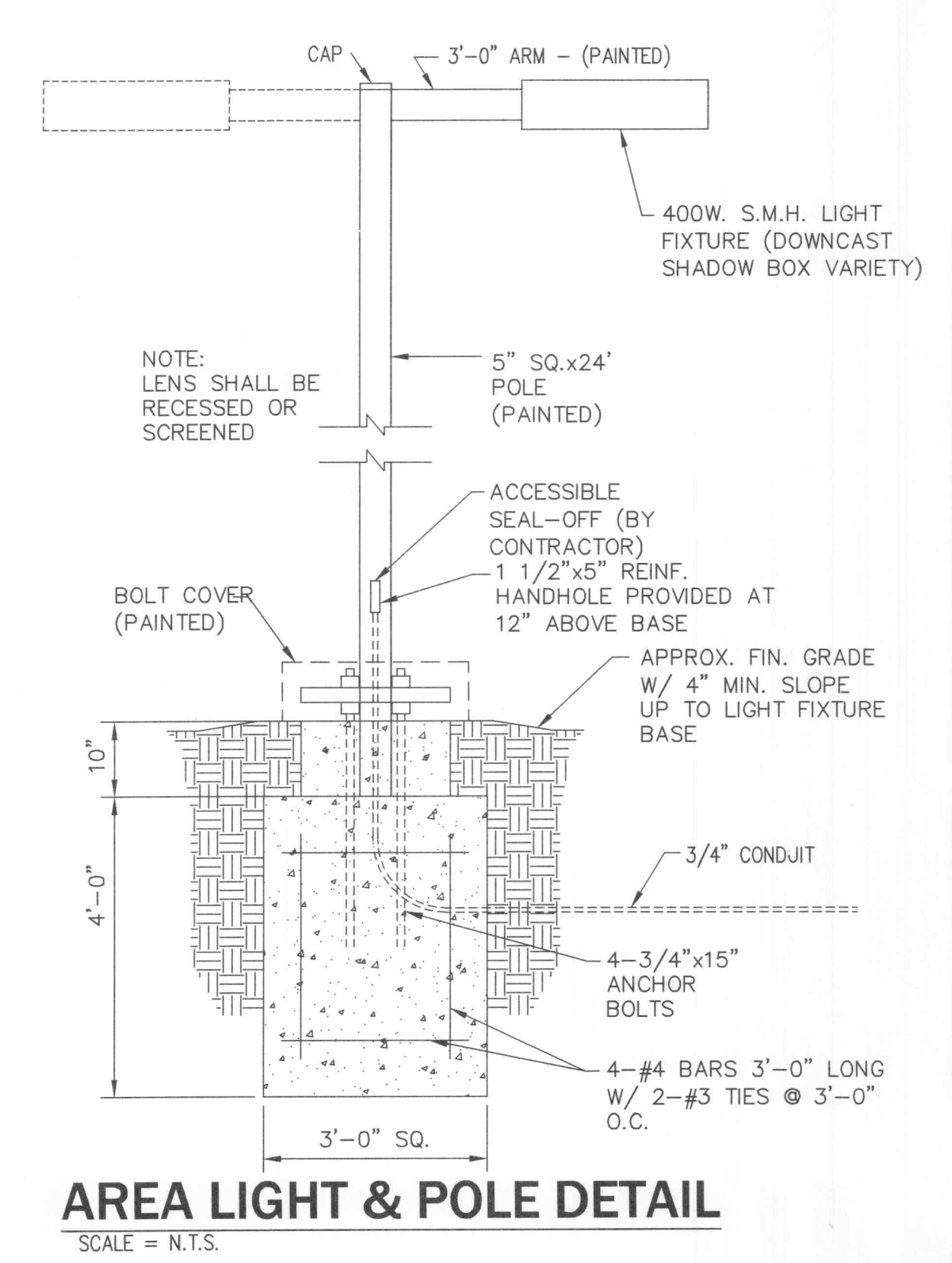
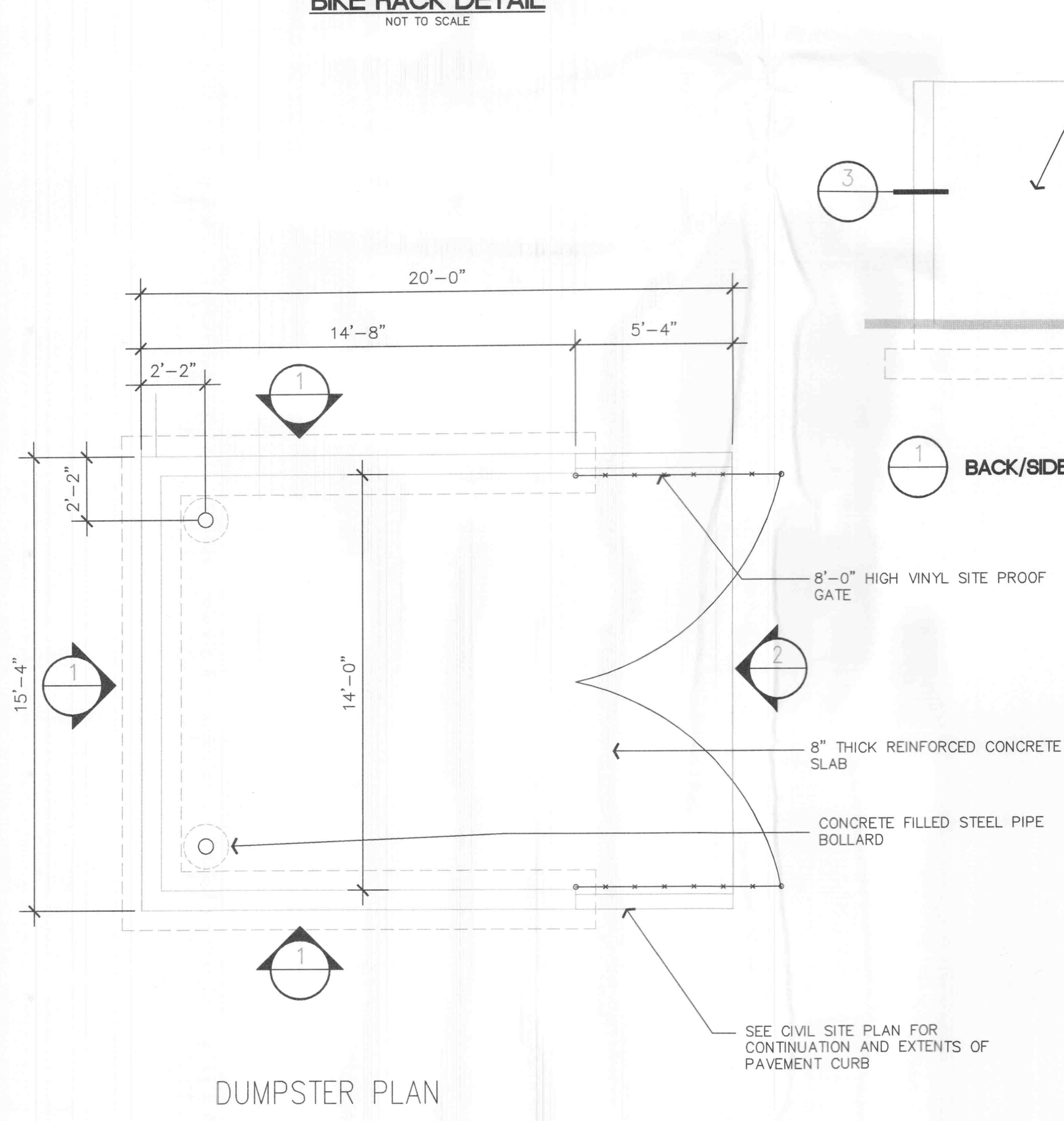


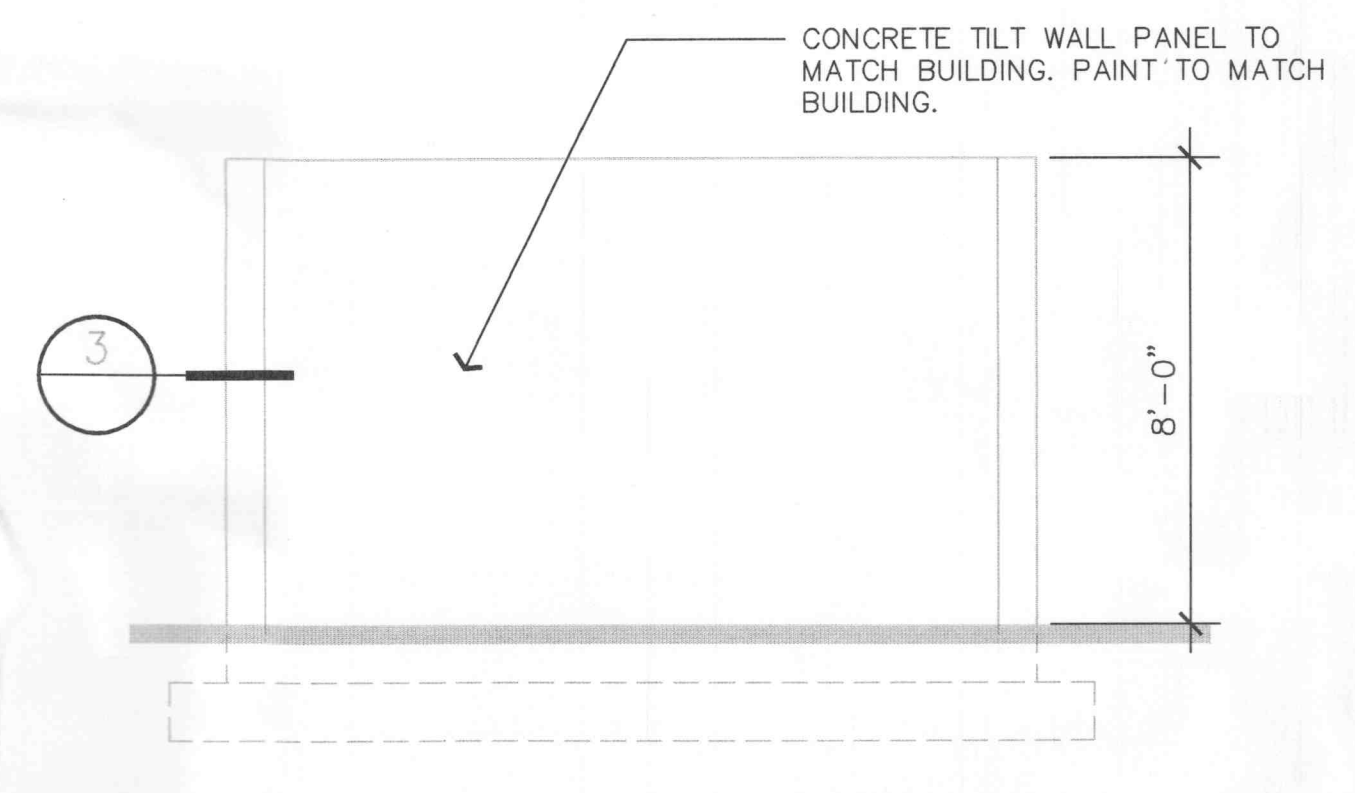
BIKE RACK DETAIL
NOT TO SCALE



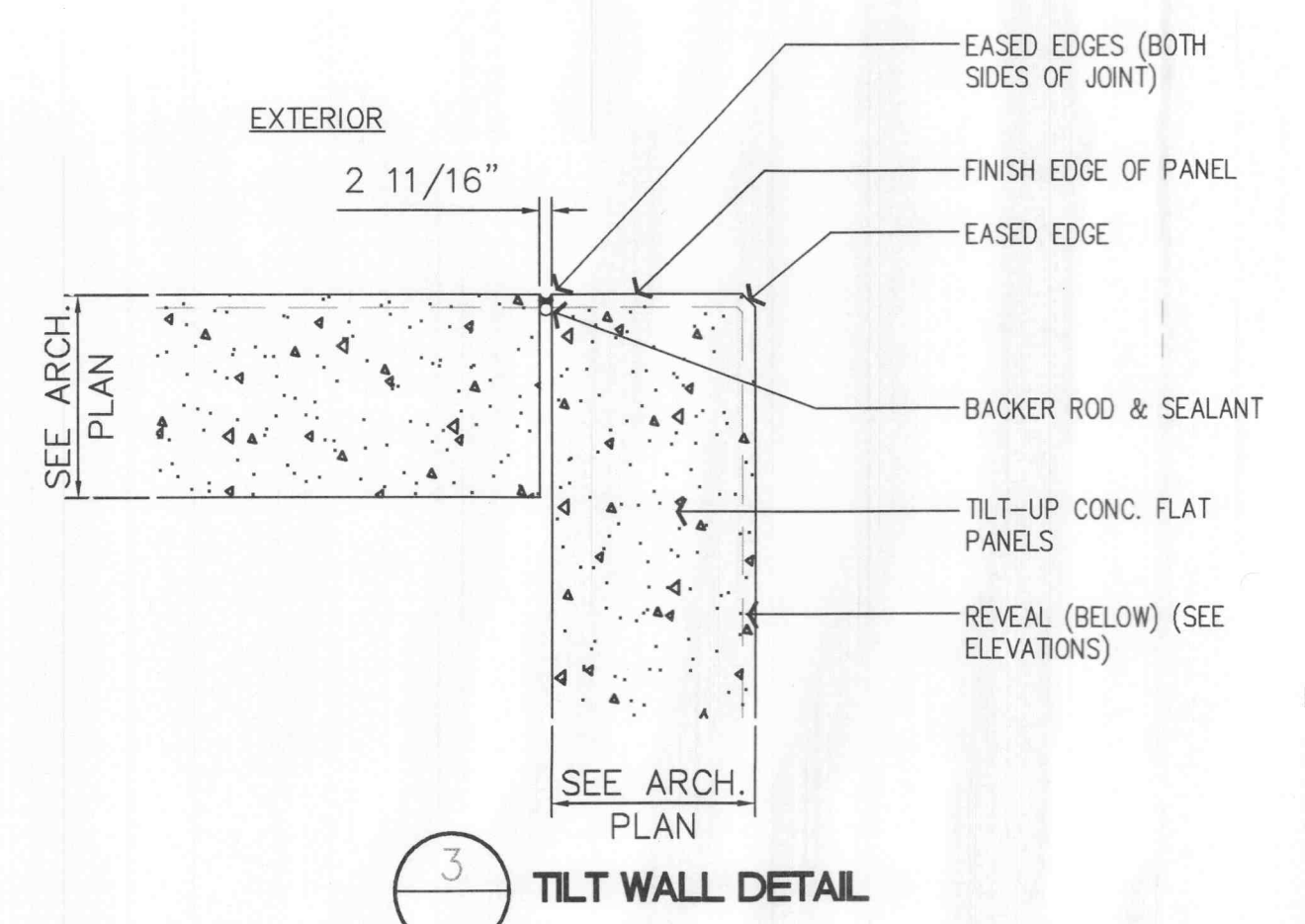
AREA LIGHT & POLE DETAIL
SCALE = N.T.S.



DUMPSTER PLAN

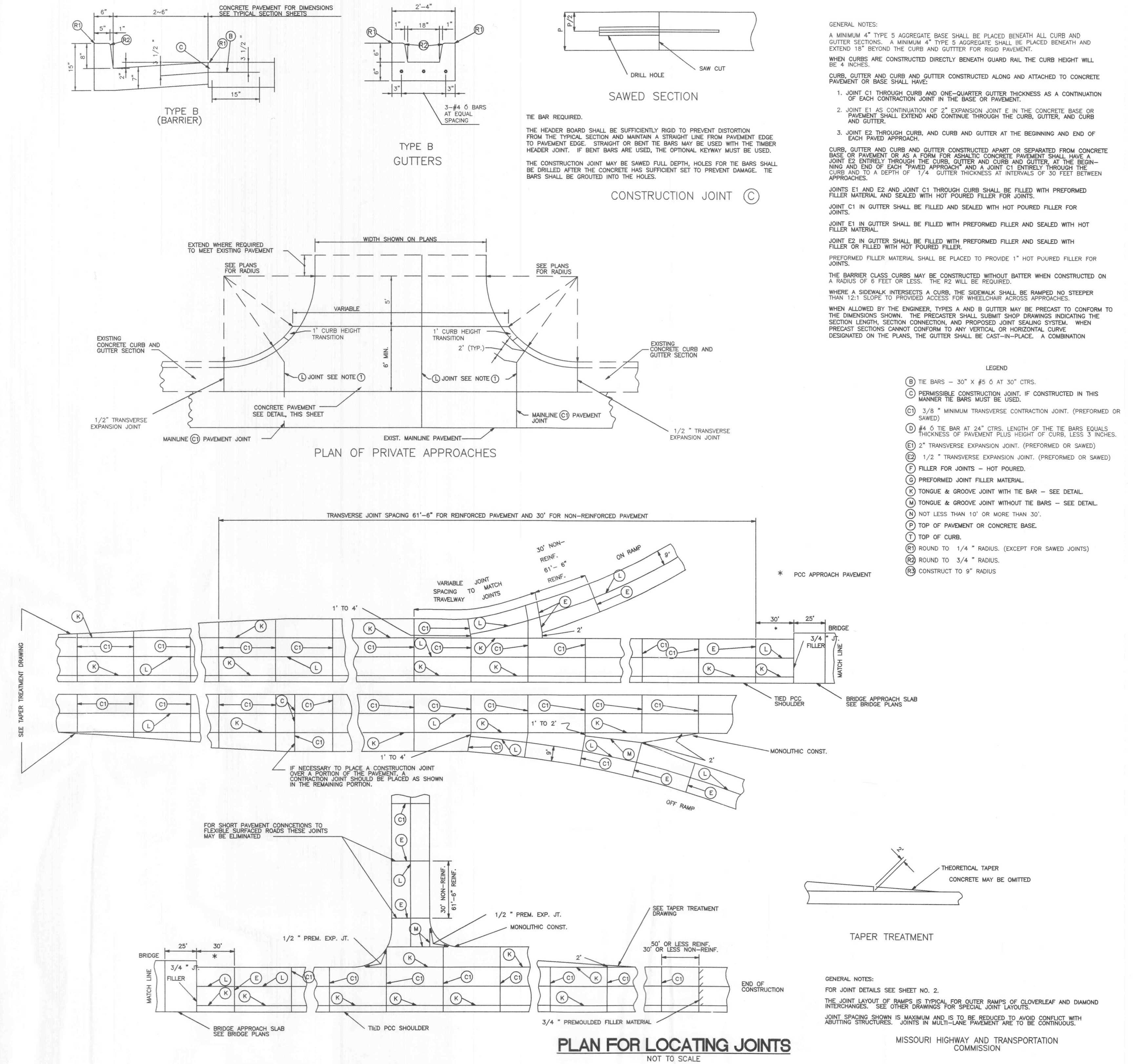


BACK/SIDE DUMPSTER ELEVATION

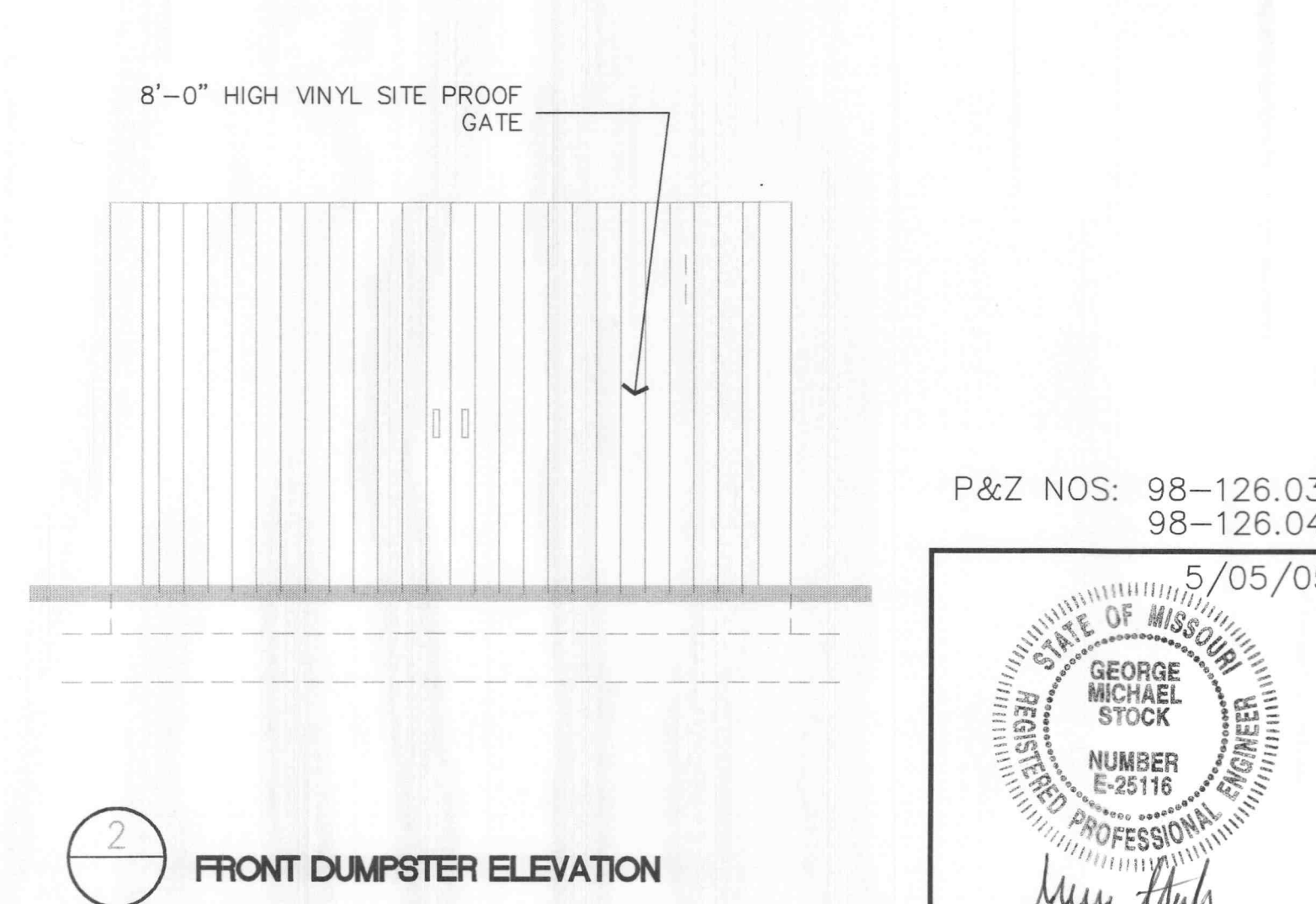


TILT WALL DETAIL

TRASH ENCLOSURE DETAILS
SCALE = N.T.S.



PLAN FOR LOCATING JOINTS
NOT TO SCALE



FRONT DUMPSTER ELEVATION

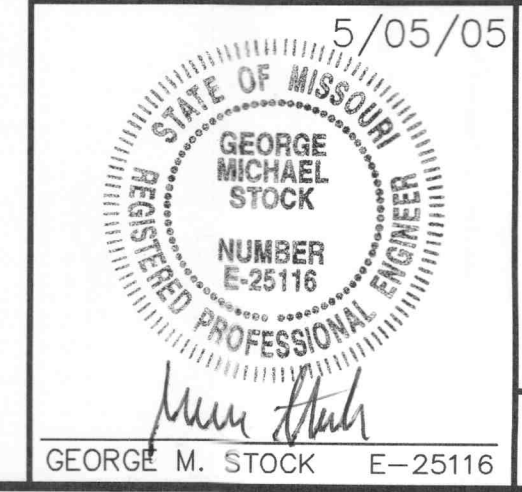
GENERAL NOTES:

- A MINIMUM 4" TYPE 5 AGGREGATE BASE SHALL BE PLACED BENEATH ALL CURB AND GUTTER SECTIONS. A MINIMUM 4" TYPE 5 AGGREGATE SHALL BE PLACED BENEATH AND EXTEND 18" BEYOND THE CURB AND GUTTER FOR RIGID PAVEMENT.
- WHEN CURBS ARE CONSTRUCTED DIRECTLY BENEATH GUARD RAIL THE CURB HEIGHT WILL BE 4 INCHES.
- CURB, GUTTER AND CURB AND GUTTER CONSTRUCTED ALONG AND ATTACHED TO CONCRETE PAVEMENT OR BASE SHALL HAVE:
 - JOINT C1 THROUGH CURB AND ONE-QUARTER GUTTER THICKNESS AS A CONTINUATION OF EACH CONSTRUCTION JOINT IN THE BASE OR PAVEMENT.
 - JOINT E1 AS CONTINUATION OF 2" EXPANSION JOINT E IN THE CONCRETE BASE OR PAVEMENT SHALL EXTEND AND CONTINUE THROUGH THE CURB, GUTTER, AND CURB AND GUTTER.
 - JOINT E2 THROUGH CURB AND CURB AND GUTTER AT THE BEGINNING AND END OF EACH PAVED APPROACH.
- CURB, GUTTER AND CURB AND GUTTER CONSTRUCTED APART OR SEPARATED FROM CONCRETE BASE OR PAVEMENT OR AS A FORM FOR ASPHALTIC CONCRETE PAVEMENT SHALL HAVE A JOINT E2 ENTIRELY THROUGH THE CURB, GUTTER AND CURB AND GUTTER, AT THE BEGINNING AND END OF EACH "PAVED APPROACH" AND A JOINT C1 ENTIRELY THROUGH THE CURB AND TO A DEPTH OF 1/4" GUTTER THICKNESS AT INTERVALS OF 30 FEET BETWEEN APPROACHES.
- JOINTS E1 AND E2 AND JOINT C1 THROUGH CURB SHALL BE FILLED WITH PREFORMED FILLER MATERIAL AND SEALED WITH HOT POURED FILLER FOR JOINTS.
- JOINT C1 IN GUTTER SHALL BE FILLED WITH PREFORMED FILLER AND SEALED WITH HOT FILLER MATERIAL.
- JOINT E2 IN GUTTER SHALL BE FILLED WITH PREFORMED FILLER AND SEALED WITH FILLER OR FILLED WITH HOT POURED FILLER.
- PREFORMED FILLER MATERIAL SHALL BE PLACED TO PROVIDE 1" HOT POURED FILLER FOR JOINTS.
- THE BARRIER CLASS CURBS MAY BE CONSTRUCTED WITHOUT BATTER WHEN CONSTRUCTED ON A RADIUS OF 6 FEET OR LESS. THE R2 WILL BE REQUIRED.
- WHERE A SIDEWALK INTERSECTS A CURB, THE SIDEWALK SHALL BE RAMPED NO STEEPER THAN 1:21 SLOPE TO PROVIDED ACCESS FOR WHEELCHAIR ACCESS APPROACHES.
- WHEN ALLOWED BY THE ENGINEER, TYPES A AND B GUTTER MAY BE PRECAST TO CONFORM TO THE DIMENSIONS SHOWN. THE PRECASTER SHALL SUBMIT SHOP DRAWINGS INDICATING THE SECTION LENGTH, SECTION CONNECTION, AND PROPOSED JOINT SEALING SYSTEM. WHEN PRECAST SECTIONS CANNOT CONFORM TO ANY VERTICAL OR HORIZONTAL CURVE DESIGNATED ON THE PLANS, THE GUTTER SHALL BE CAST-IN-PLACE. A COMBINATION

LEGEND

- (B) TIE BARS - 30" X #5 @ 30" CTRS.
- (C) PERMISSIBLE CONSTRUCTION JOINT. IF CONSTRUCTED IN THIS MANNER THE BARS MUST BE USED.
- (C/S) 3/8" MINIMUM TRANSVERSE CONSTRUCTION JOINT. (PREFORMED OR SAWED)
- (D) #4 @ 24" CTRS. LENGTH OF THE TIE BARS EQUALS THICKNESS OF PAVEMENT PLUS HEIGHT OF CURB, LESS 3 INCHES.
- (E) 2" TRANSVERSE EXPANSION JOINT. (PREFORMED OR SAWED)
- (E2) 1/2" TRANSVERSE EXPANSION JOINT. (PREFORMED OR SAWED)
- (F) FILLER FOR JOINTS - HOT POURED.
- (G) PREFORMED JOINT FILLER MATERIAL.
- (K) TONGUE & GROOVE JOINT WITH THE BAR - SEE DETAIL.
- (M) TONGUE & GROOVE JOINT WITHOUT THE BARS - SEE DETAIL.
- (N) NOT LESS THAN 10' OR MORE THAN 30'.
- (P) TOP OF PAVEMENT OR CONCRETE BASE.
- (T) TOP OF CURB.
- (R1) ROUND TO 1/4" RADIUS. (EXCEPT FOR SAWED JOINTS)
- (R2) ROUND TO 3/4" RADIUS.
- (R3) CONSTRUCT TO 6" RADIUS

P&Z NOS: 98-126.03
98-126.04



DETAILS

TERRA RETAIL DEVELOPMENT/ASHLEY FURNITURE

Stock & Associates
Consulting Engineers, Inc.

257 Chesterfield Business Parkway
St. Louis, MO 63005
PH. (636) 530-9100
FAX (636) 530-9130
e-mail: general@stockassoc.com
Web: www.stockassoc.com

DRWN BY: J.P.P. DATE: 10/20/04 CHECKED BY: G.M.S. DATE: 10/20/04 JOB NUMBER: 204-3381 SHEET: C10 of 23

C:\DRAWING\300\2043381\PLANS\C10-DETAILS.dwg, 5/20/2005 1:35:24 PM, XIP 6054.rvt