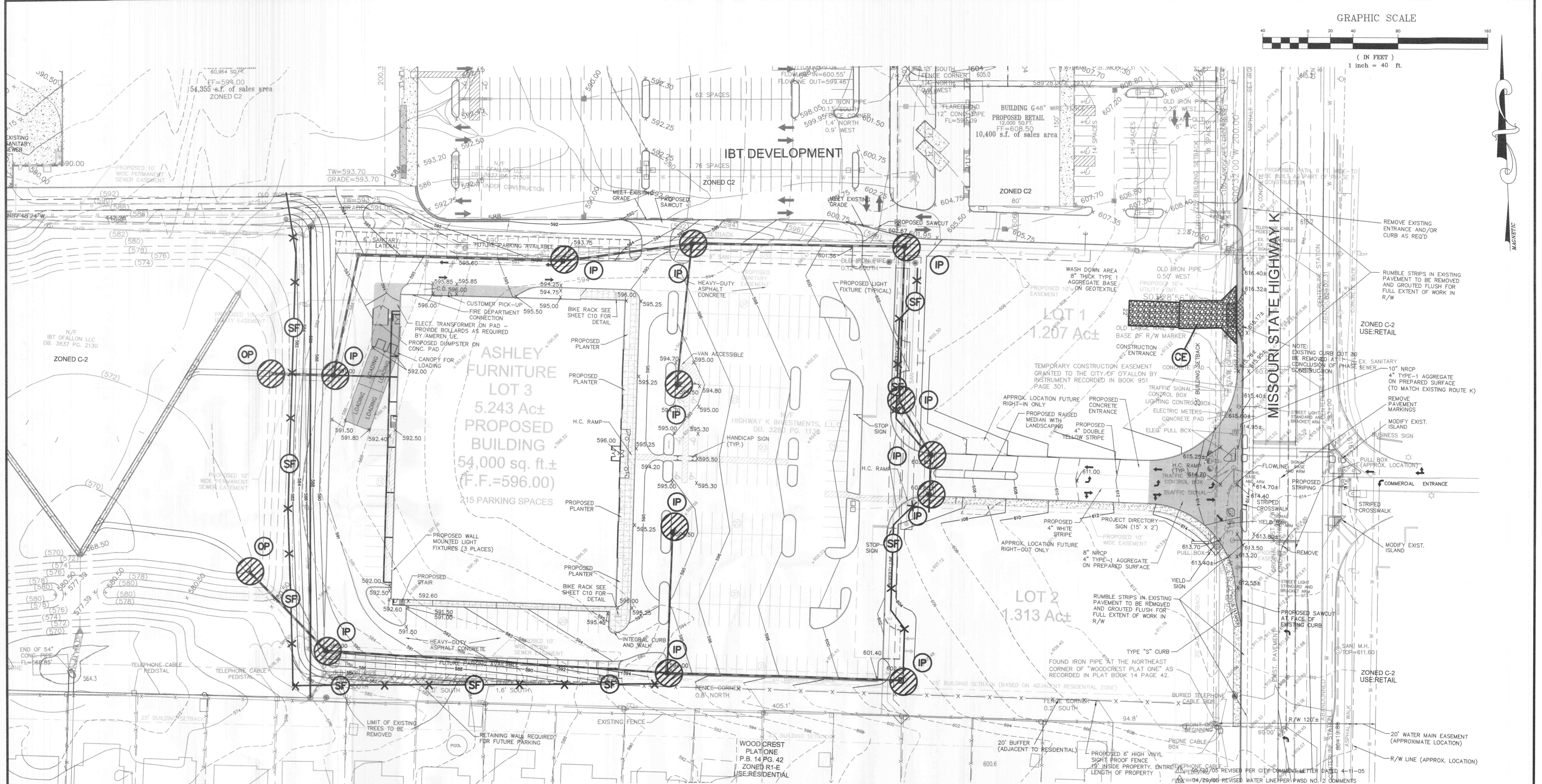


(IN FEET)
1 inch = 40 ft.



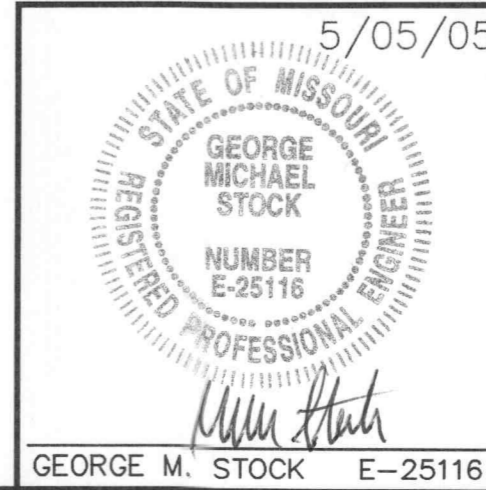
LEGEND

- | | | | |
|------|--|--------|--------------------------|
| (SB) | SILTATION BASIN | (CIP) | CULVERT INLET PROTECTION |
| (IP) | INLET PROTECTION | (STB) | STRAW BALE BARRIER |
| (OP) | OUTLET PROTECTION | (RR) | RIPRAP |
| (CE) | TRUCK WASH OFF/ CONSTRUCTION ENTRANCE | X-SF-X | SILT FENCE |

NO MUD OR DEBRIS TO BE ON
HIGHWAY K AT ANY TIME

- ▲ 04/26/05 REVISED FOR MGDOT COMMENTS
- ▲ 04-21-05 REVISED WATER LINE CONNECTION
- ▲ 04-15-05 REVISED SANITARY SEWER
- ▲ 04-12-05 REVISED SANITARY SEWER-EX. WATER LINE CONFLICT
- ▲ 04-07-05 REVISED SANITARY SEWER PER AS-BUILT CONDITIONS
- ▲ 02-15-05 REVISED SANITARY PROFILE-SHOWED EX. STORM CROSSING
- ▲ 01-20-05 REVISED PER MGDOT'S COMMENTS/RAISED SITE
- ▲ 12-16-04 REVISED PER ST. CHARLES COUNTY WATER NO. 2 COMMENTS
- ▲ 11-24-04 REVISED PER CITY COMMENT LETTER DATED 11-15-04

P&Z NOS: 98-126.03
98-126.04



EROSION AND SEDIMENT CONTROL PLAN
TERRA RETAIL DEVELOPMENT/ASHLEY FURNITURE

STOCK & ASSOCIATES
Consulting Engineers, Inc.

257 Chesterfield Business Parkway
St. Louis, MO 63005
PH. (636) 530-9100
FAX (636) 530-9130
e-mail: general@stockassoc.com
Web: www.stockassoc.com

DRAWN BY: J.P.P. DATE: 10/20/04
CHECKED BY: G.M.S. DATE: 10/20/04
JOB NUMBER: 204-3381
SHEET: C14 of 23

C:\DRAWING\3300\2043381\PLANS\CL4-EROSION.dwg, 5/20/2005 2:11:04 PM, KIP 6054.pcl