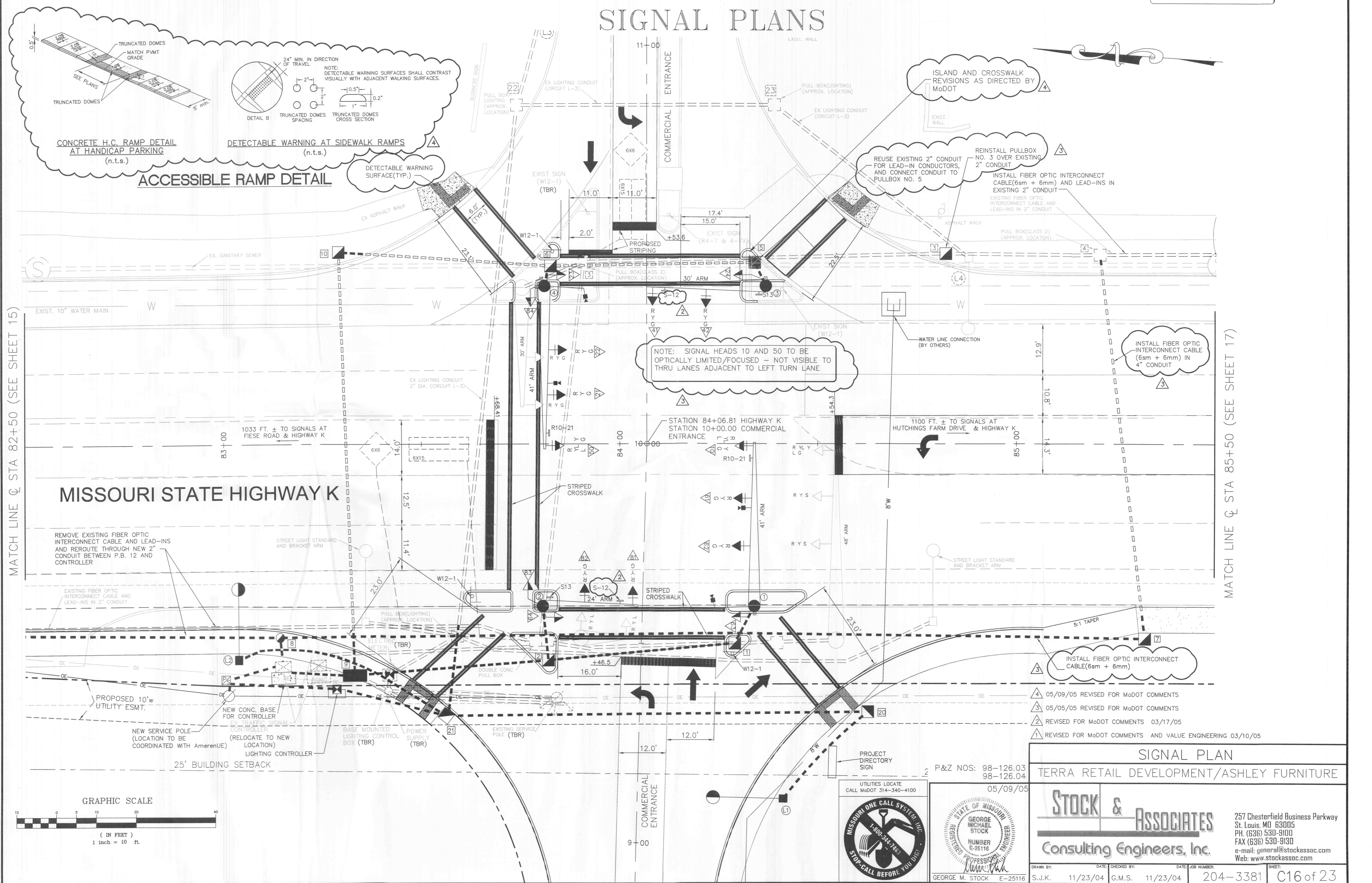


MISSOURI STATE HIGHWAY K-COMMERCIAL ENTRANCE

SIGNS PER MISSOURI STANDARD PLANS FOR HIGHWAY CONSTRUCTION, SECTION 920.80

SIGNAL PLANS



MATCH LINE @ STA 82+50 (SEE SHEET 15)

MATCH LINE @ STA 85+50 (SEE SHEET 17)

MISSOURI STATE HIGHWAY K

- 4 05/09/05 REVISED FOR MoDOT COMMENTS
- 3 05/05/05 REVISED FOR MoDOT COMMENTS
- 2 REVISED FOR MoDOT COMMENTS 03/17/05
- 1 REVISED FOR MoDOT COMMENTS AND VALUE ENGINEERING 03/10/05

SIGNAL PLAN
TERRA RETAIL DEVELOPMENT/ASHLEY FURNITURE

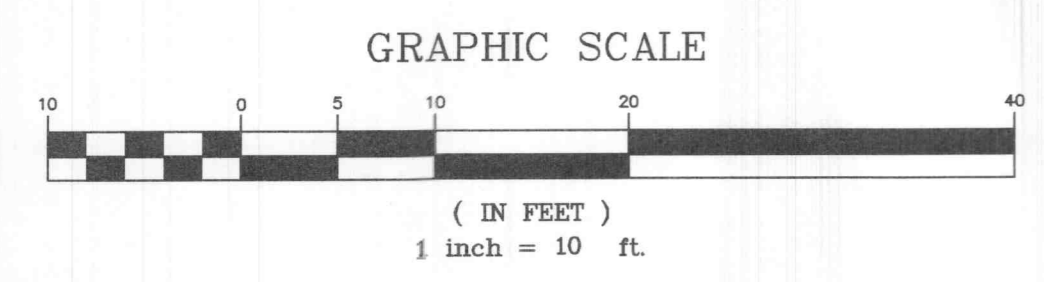
Stock & Associates
Consulting Engineers, Inc.

257 Chesterfield Business Parkway
St. Louis, MO 63005
PH. (636) 530-9100
FAX (636) 530-9130
e-mail: general@stockassoc.com
Web: www.stockassoc.com

UTILITIES LOCATE
CALL MoDOT 314-340-4100

MISSOURI ONE CALL SYSTEM, INC.
1-800-344-7463
STOP-CALL BEFORE YOU DIG!

STATE OF MISSOURI
REGISTERED PROFESSIONAL ENGINEER
GEORGE MICHAEL STOCK
NUMBER E-25116



ACCESSIBLE RAMP DETAIL

CONCRETE H.C. RAMP DETAIL AT HANDICAP PARKING (n.t.s.)

DETECTABLE WARNING AT SIDEWALK RAMPS (n.t.s.)

DETECTABLE WARNING SURFACE(TYP.)

NOTE: SIGNAL HEADS 10 AND 50 TO BE OPTICALLY LIMITED/FOCUSED - NOT VISIBLE TO THRU LANES ADJACENT TO LEFT TURN LANE

REUSE EXISTING 2" CONDUIT FOR LEAD-IN CONDUCTORS, AND CONNECT CONDUIT TO PULLBOX NO. 5

REINSTALL PULLBOX NO. 3 OVER EXISTING 2" CONDUIT

INSTALL FIBER OPTIC INTERCONNECT CABLE(6sm + 6mm) AND LEAD-INS IN EXISTING 2" CONDUIT

INSTALL FIBER OPTIC INTERCONNECT CABLE (6sm + 6mm) IN 4" CONDUIT

INSTALL FIBER OPTIC INTERCONNECT CABLE(6sm + 6mm)

25' BUILDING SETBACK

P&Z NOS: 98-126.03
98-126.04

