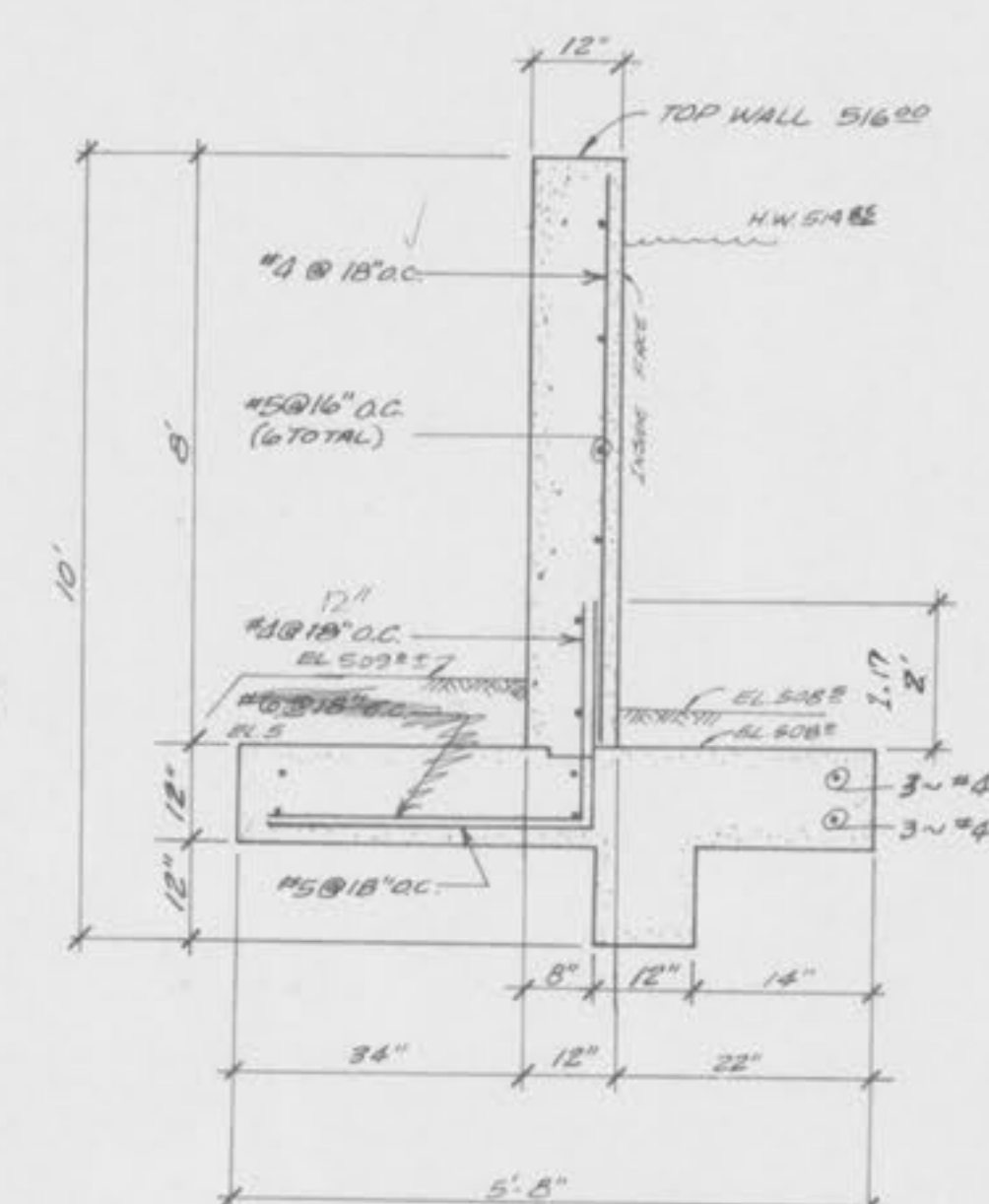
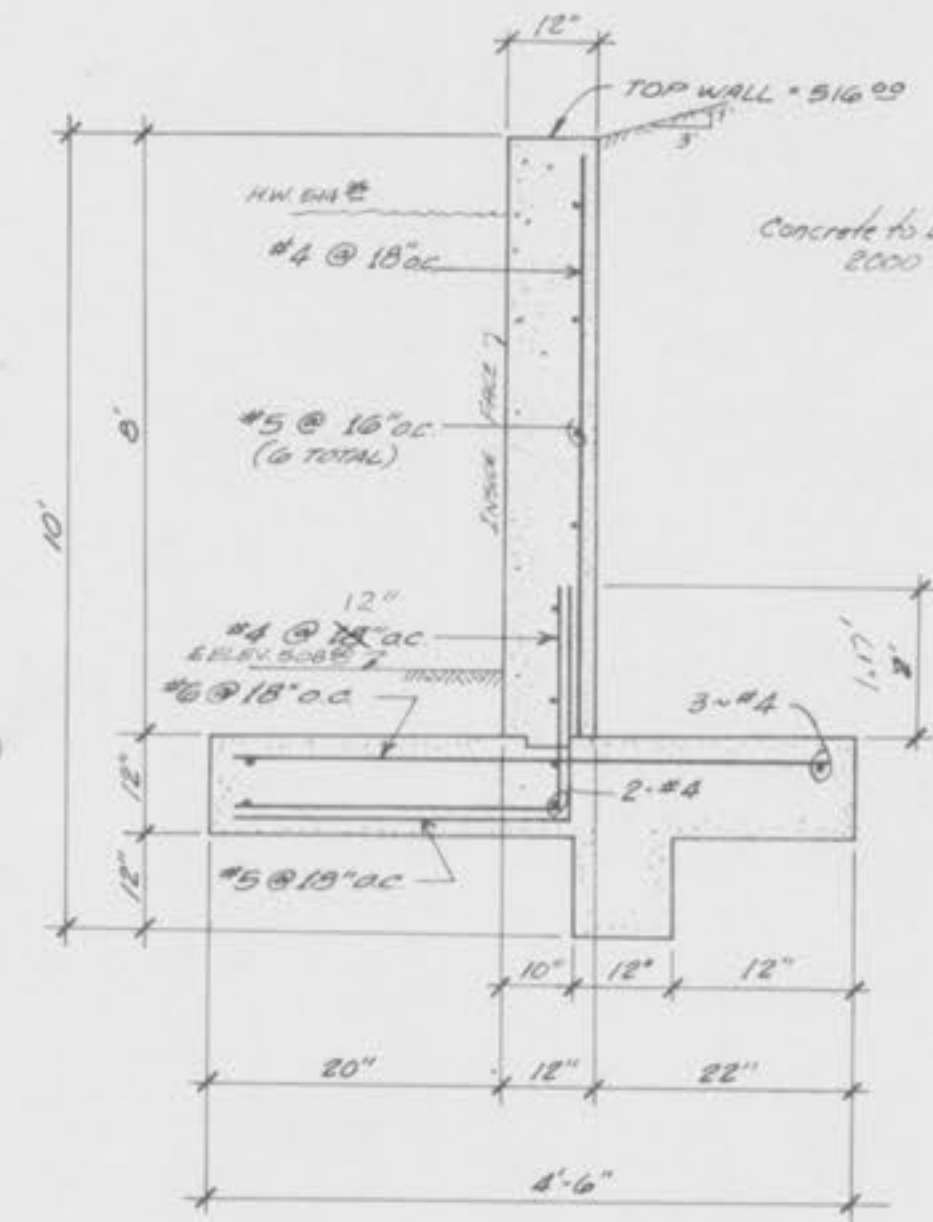
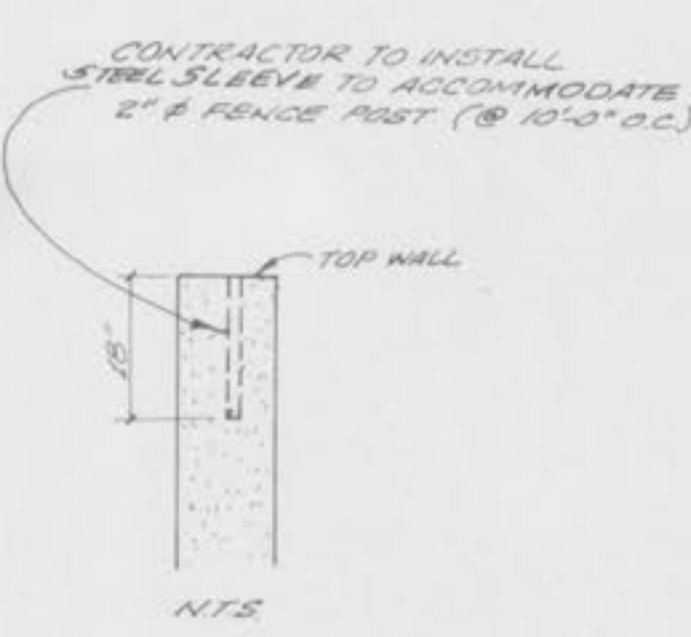
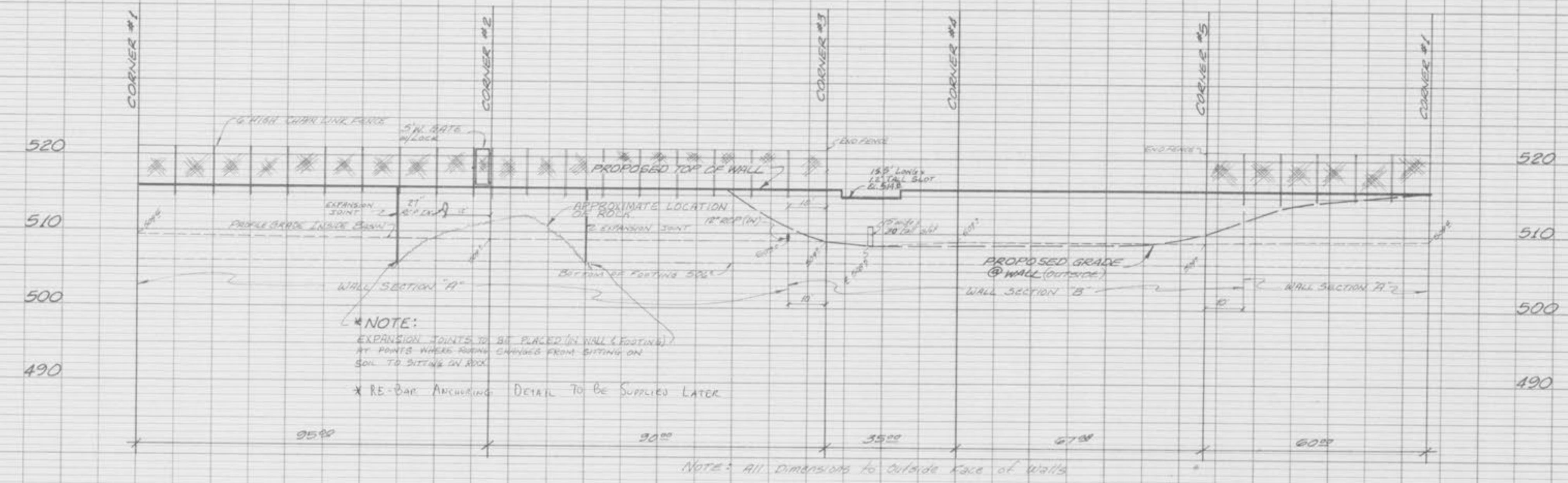


NOTE: INSTALL #5 RE-BAR @ CENTER OF 15" W. X 30" H. VERTICAL OPENING.  
 NOTE: CONTRACTOR TO PROVIDE 2" CHAMFER ON ALL SIDES OF 15" X 30" LOW FLOW SLOT.

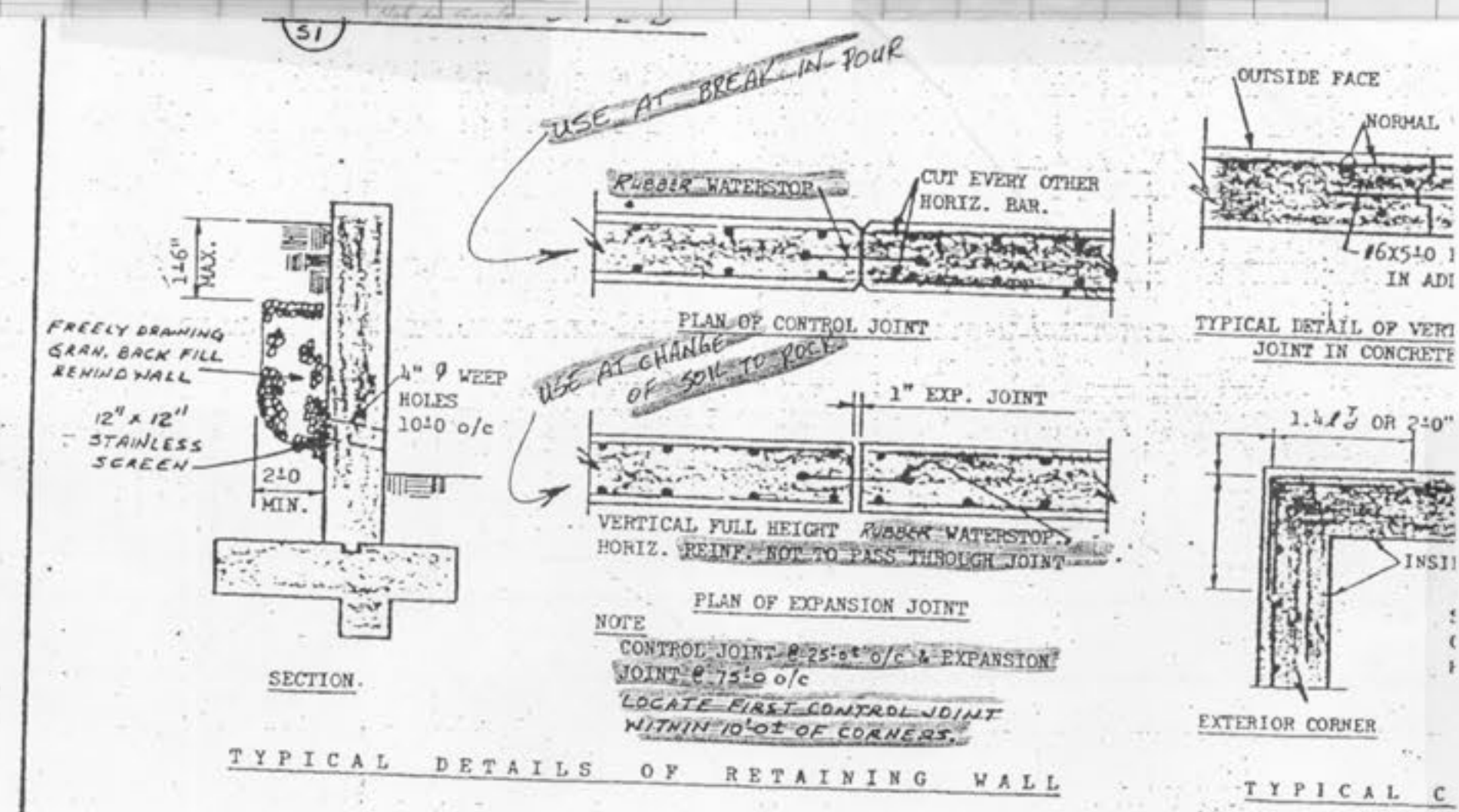
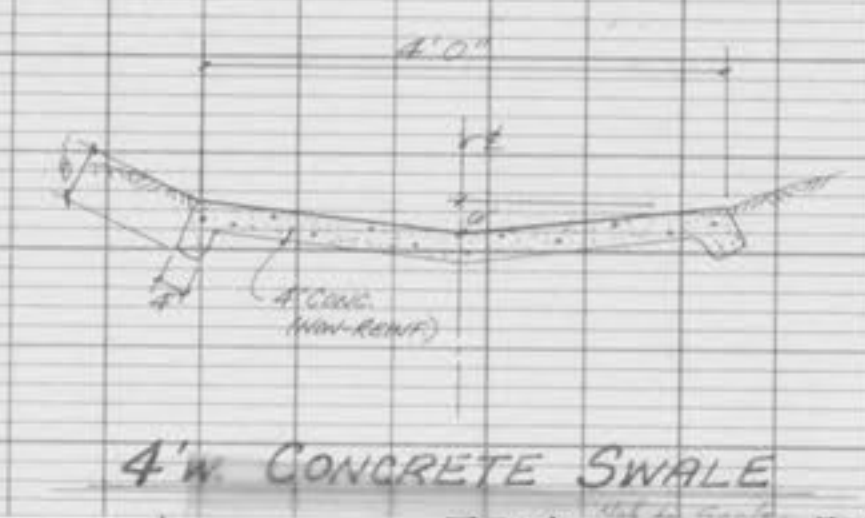


WALL "A"  
 N.T.S.

WALL "B"  
 N.T.S.



WALL PROFILE  
 1" = 20' H.  
 1" = 10' V.



DATE	
BY	
REVISIONS	
NO.	
DATE	
BY	
REVISIONS	
NO.	
DATE	
BY	
REVISIONS	
NO.	

DATE	
BY	
REVISIONS	
NO.	
DATE	
BY	
REVISIONS	
NO.	
DATE	
BY	
REVISIONS	
NO.	

OCT-25-90 10:14:26 ID:BAV ENGINEERING TEL: 603.314.5475