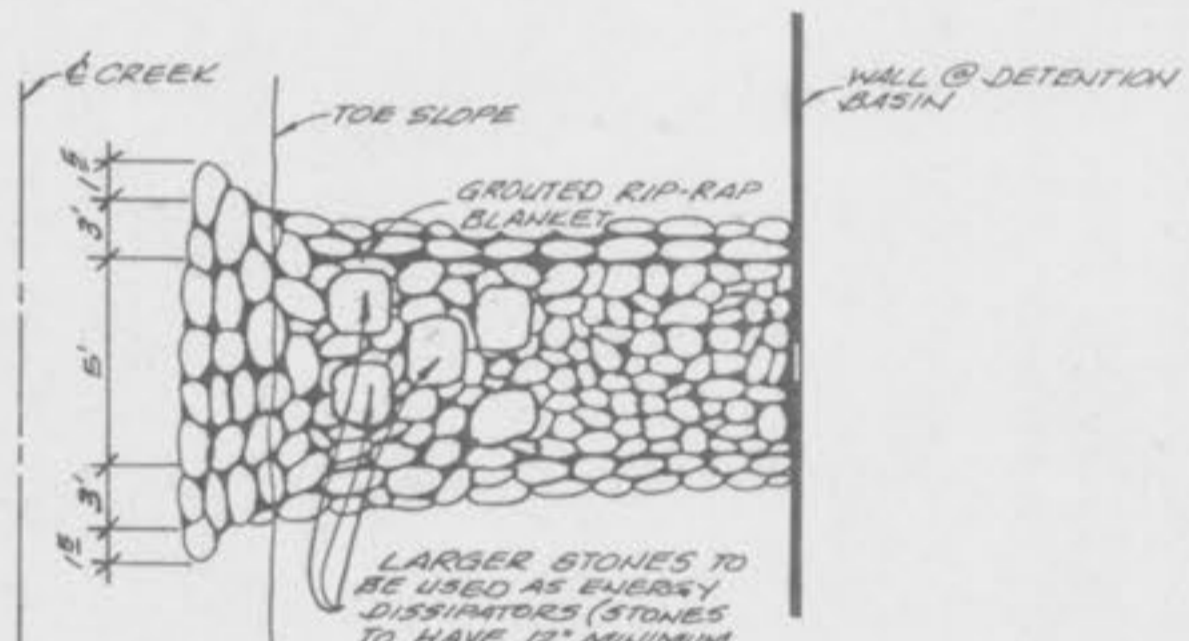
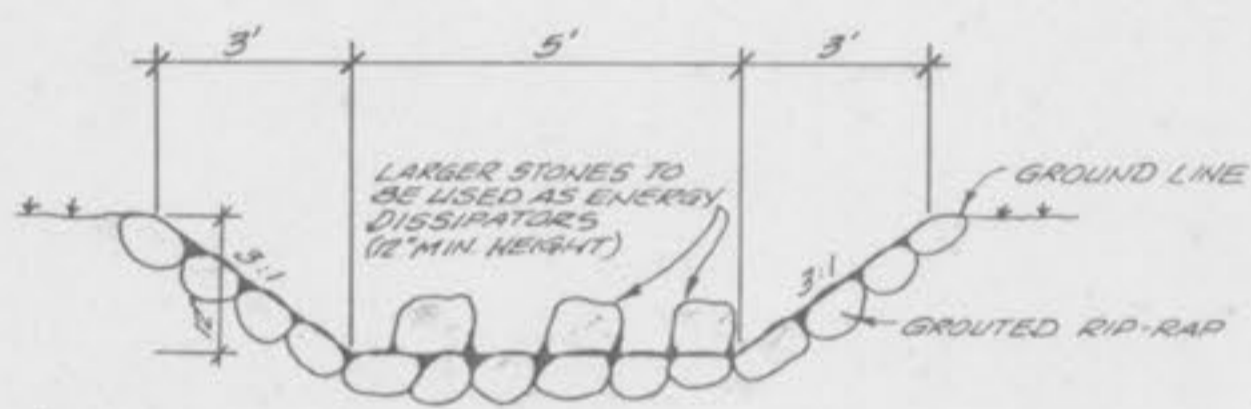
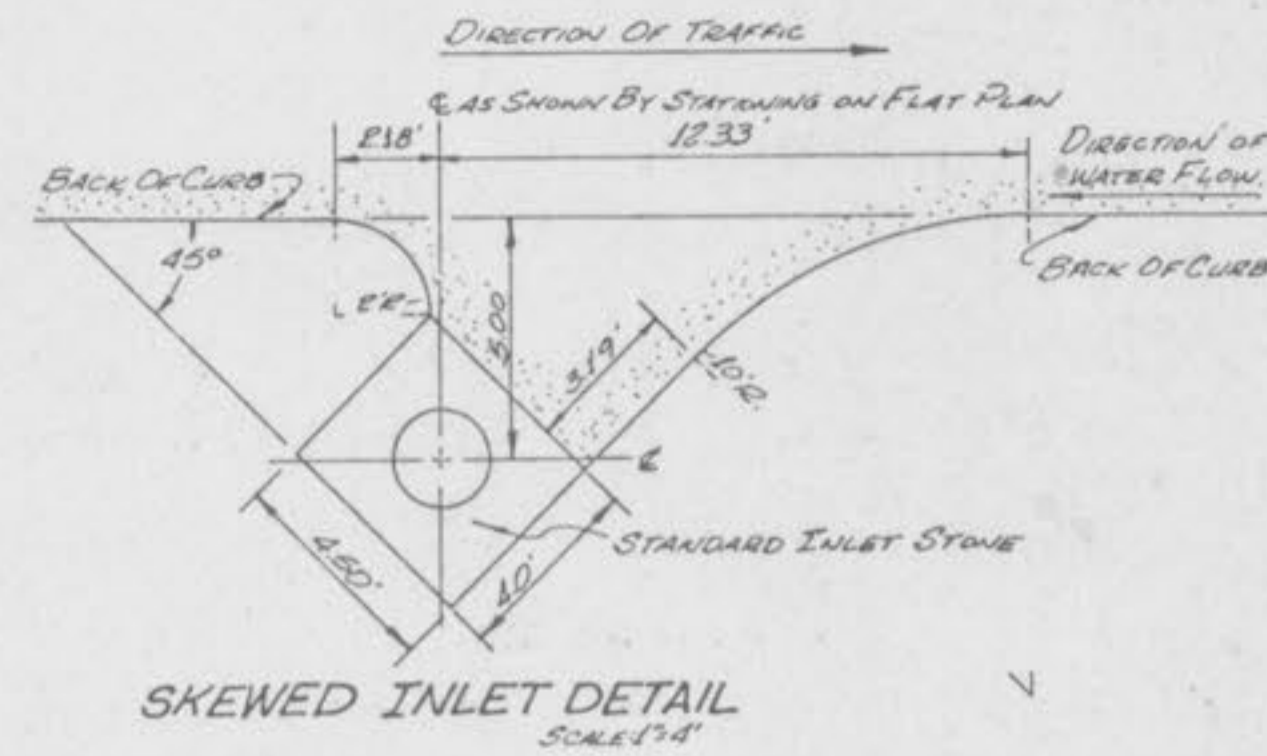


**TREE PLANTING DETAIL**  
NO SCALE

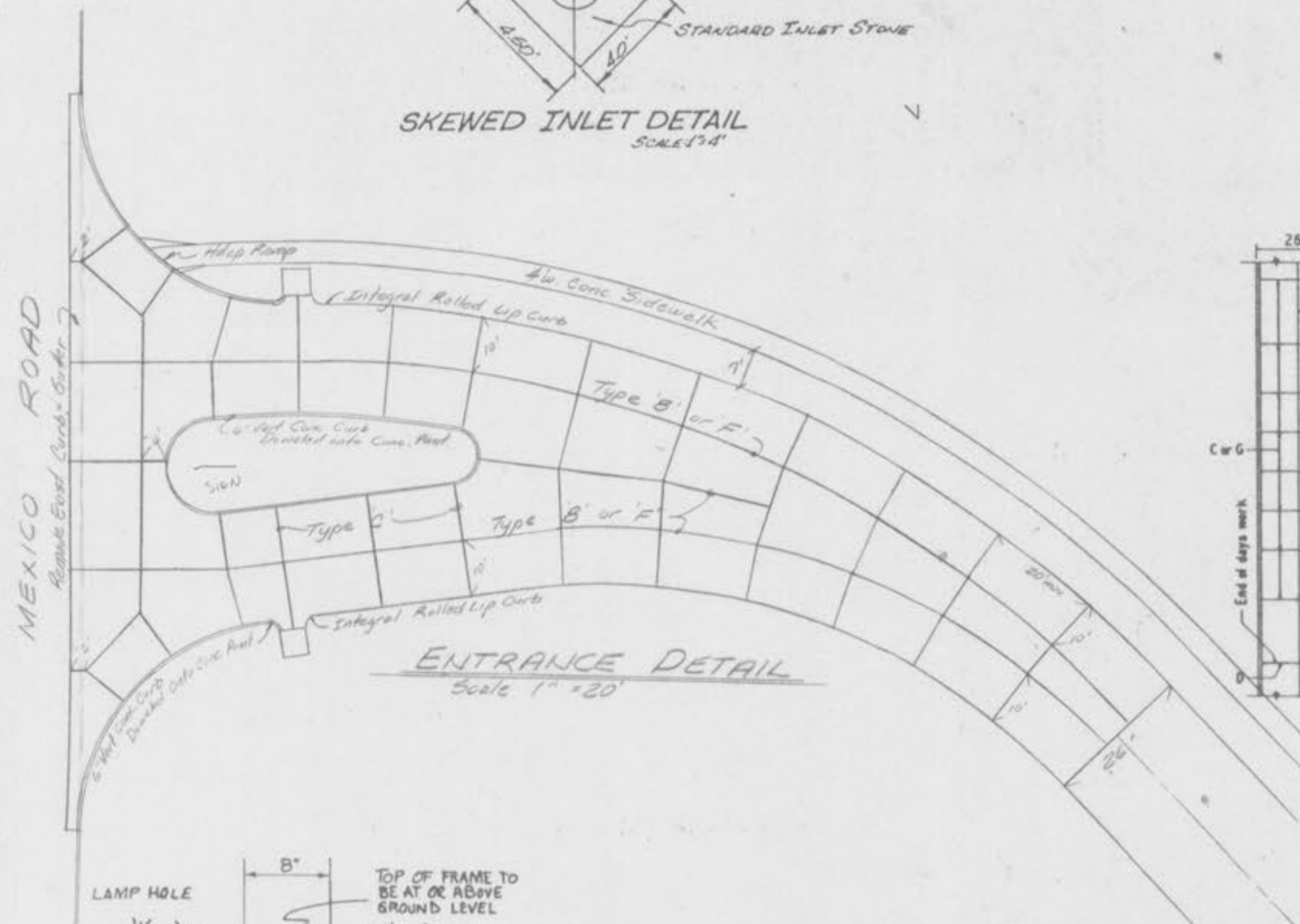


SWALE W/ 3:1 SIDE SLOPES & 6\"/>

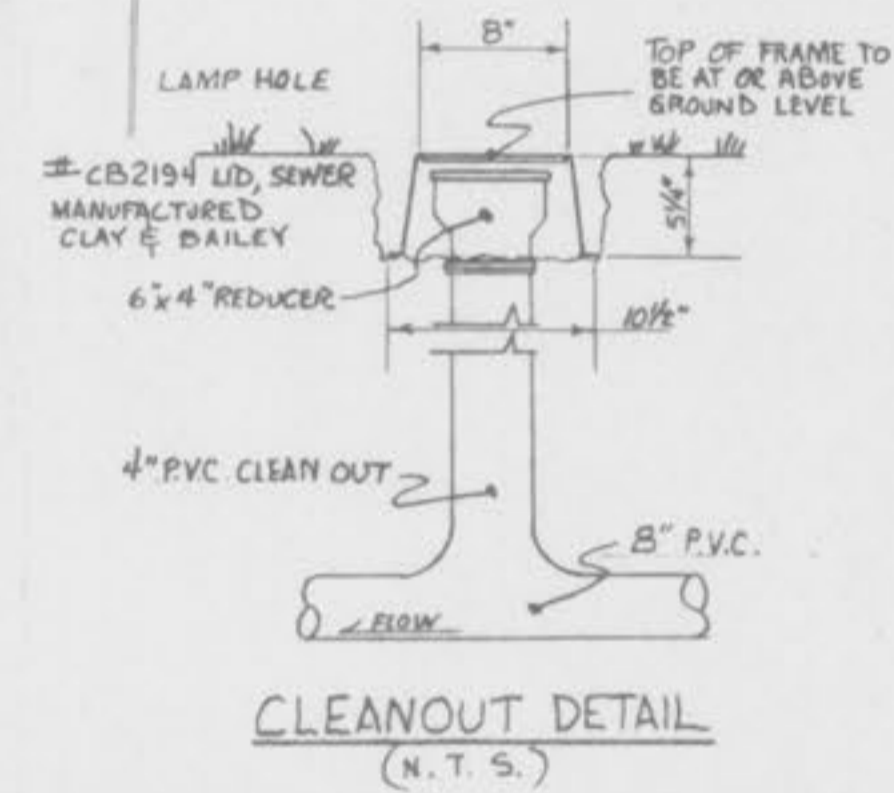
**RIP-RAP SWALE (FLAT-BOTTOM)**  
NOT TO SCALE



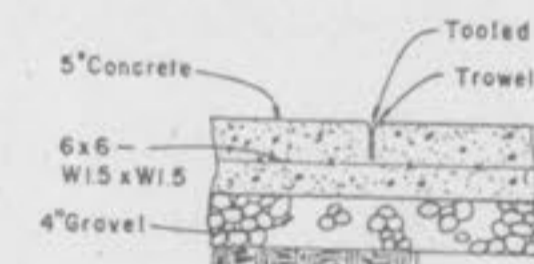
**SKEWED INLET DETAIL**  
SCALE 1/4\"/>



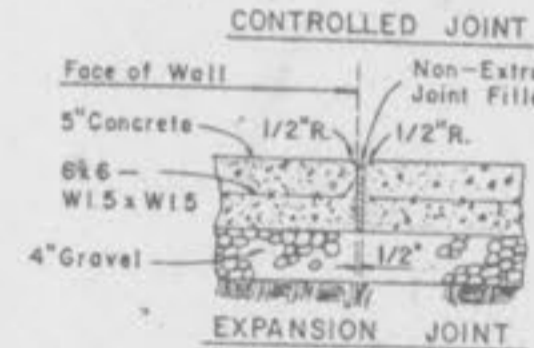
**ENTRANCE DETAIL**  
Scale 1\"/>



**CLEANOUT DETAIL**  
(N. T. S.)

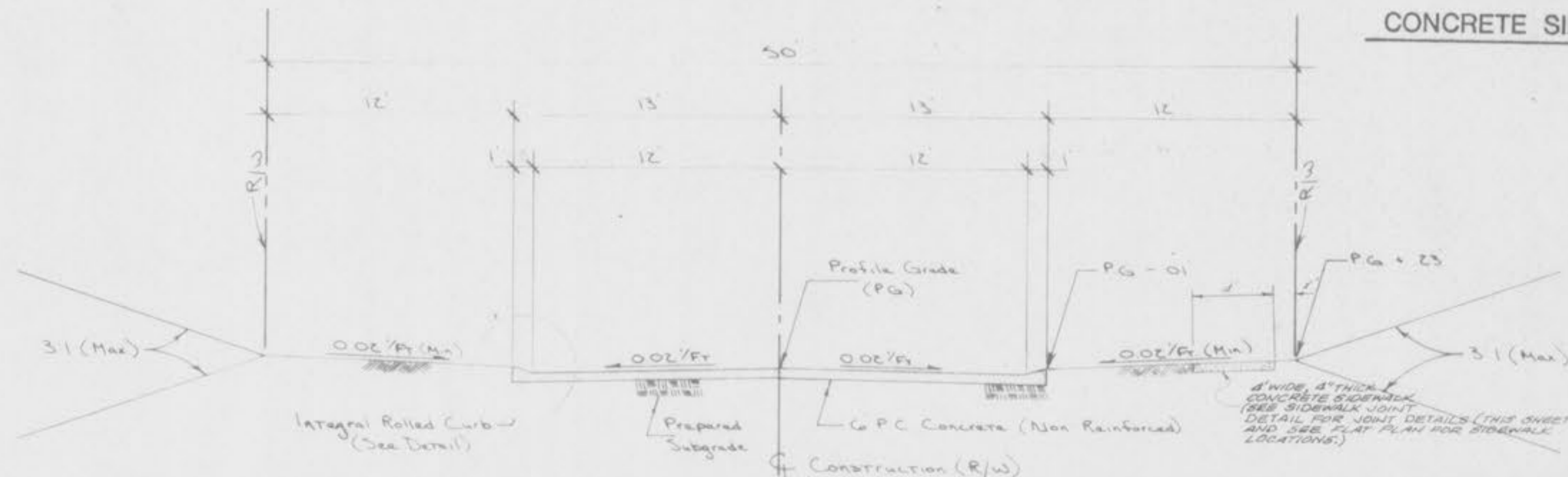


NOTE  
Provide Controlled Joint at 4'-0\"/>

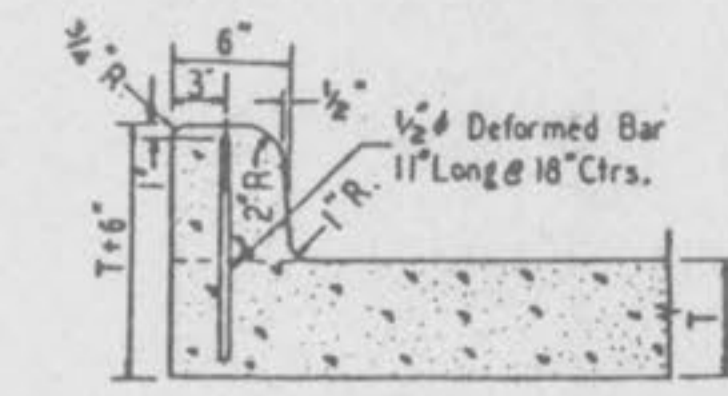


NOTE  
Provide Expansion Joint at 24'-0\"/>

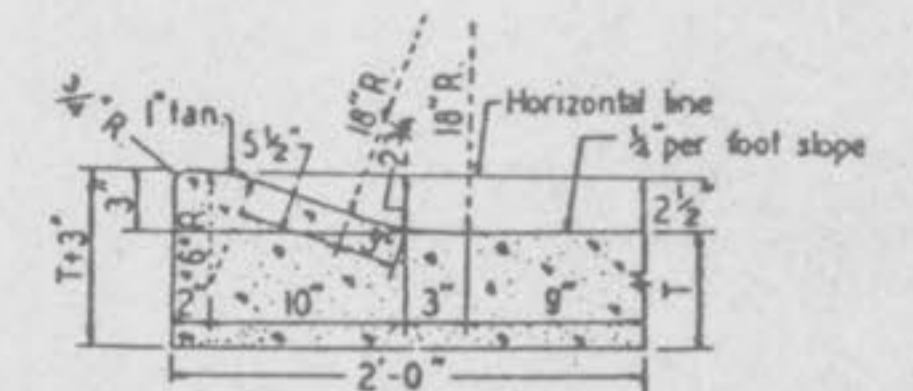
**CONCRETE SIDEWALK JOINTS**



**TYPICAL SECTION**  
(26\"/>

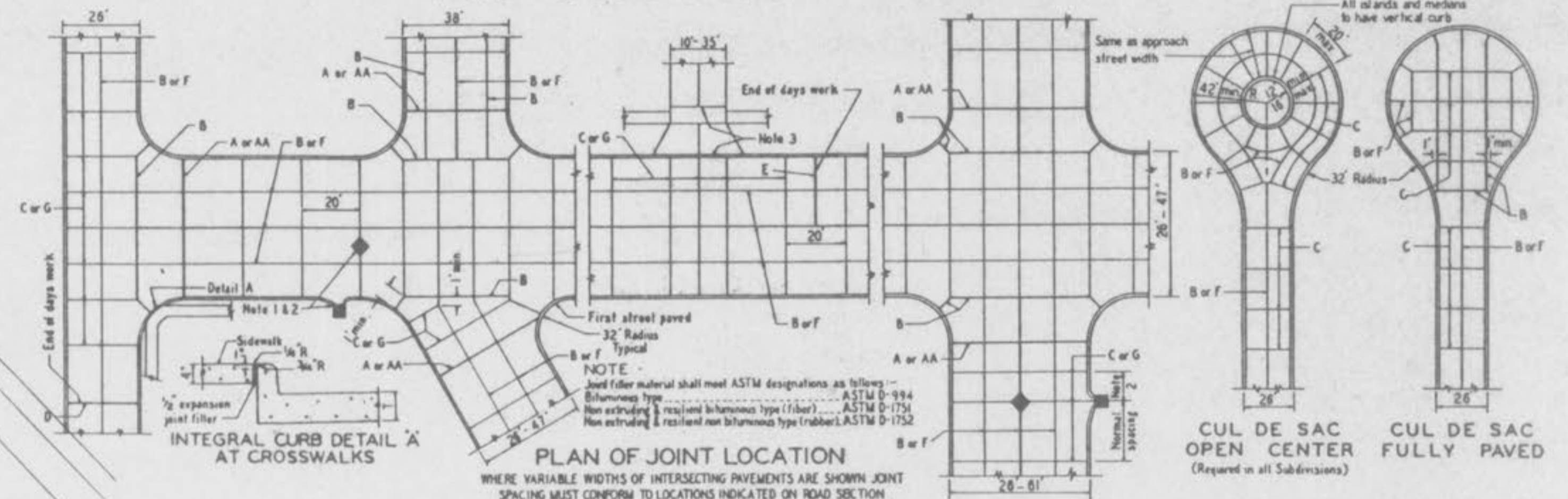


**INTEGRAL VERTICAL CURB**

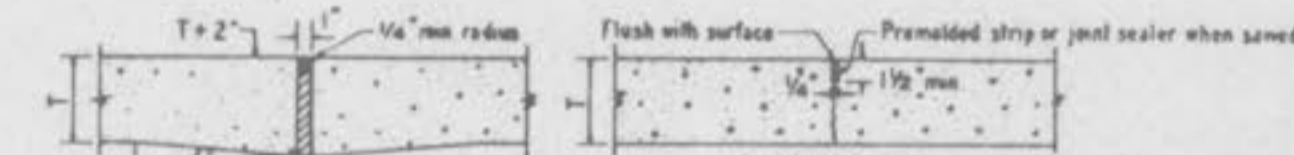


**INTEGRAL ROLLED CURB**

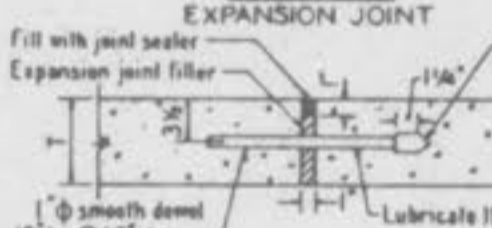
**INTEGRAL CURB PAVEMENT TYPICAL SECTIONS AND DETAILS**



**PLAN OF JOINT LOCATION**  
WHERE VARIABLE WIDTHS OF INTERSECTING PAVEMENTS ARE SHOWN JOINT SPACING MUST CONFORM TO LOCATIONS INDICATED ON ROAD SECTION



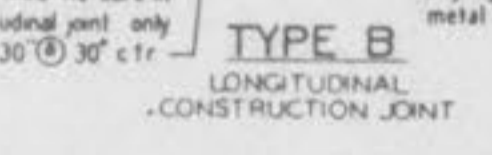
**TYPE A**  
EXPANSION JOINT



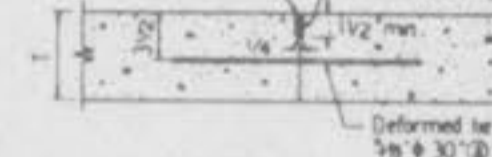
**TYPE AA**  
ALTERNATE EXPANSION JOINT



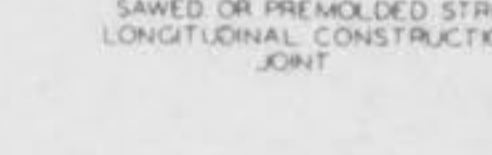
**TYPE B**  
LONGITUDINAL CONSTRUCTION JOINT



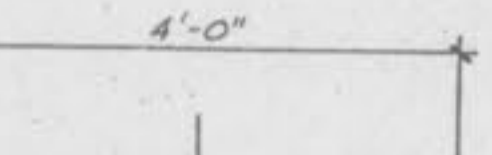
**TYPE C**  
SAWED OR PREMOLDED STRIP TRANSVERSE CONSTRUCTION JOINT



**TYPE D**  
TRANSVERSE CONSTRUCTION JOINT



**TYPE E**  
TIED TRANSVERSE CONSTRUCTION JOINT  
(TO BE USED AT POINT NOT ON JOINT SPACING)



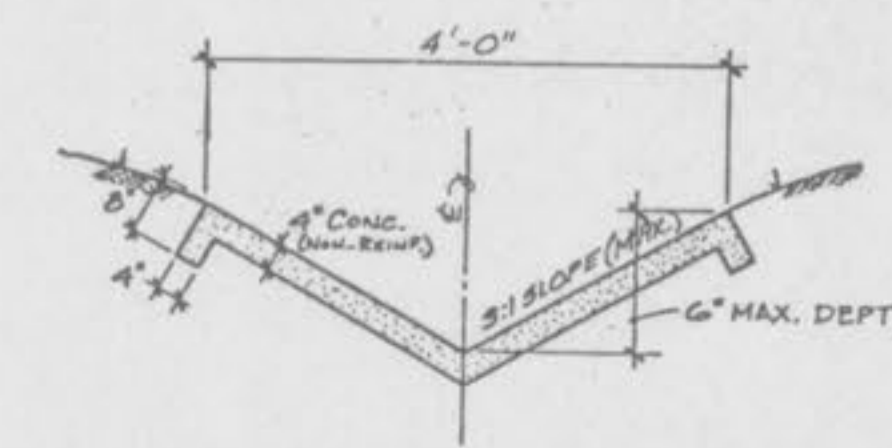
**TYPE F**  
SAWED OR PREMOLDED STRIP LONGITUDINAL CONSTRUCTION JOINT



**TYPE G**  
SAWED OR PREMOLDED STRIP TRANSVERSE CONSTRUCTION JOINT

- GENERAL NOTES**
- All catch basins shall be separate from the pavement and curb by expansion joint material extending completely through curb and slab. Manhole castings within the pavement shall be boxed as shown in the "Sewer Construction Details".
  - When a joint falls with 5 ft. of or contacts beam, machine, or other structure, shorten one or more panels either side of opening to permit joint to fall on road structure and at or between corners of rectangular structures.
  - Driveway configurations are shown in the "Entrance Construction Details".
  - Construction joint and cover here may be omitted when curb is poured integral with pavement.
  - Minimum Thickness for Pavement is:
 

Local or Minor Streets	CONCRETE (T)	6"
Major or Industrial Streets		7"
Arterial or Industrial Streets		8"
  - Base material under pavement will be made with 4 inches of Rolled Stone Base.
  - For minor rural or urban and minor subdivision pavements (6" thick concrete), 1/2" x 3/4" deformed tie bars 30" lg. @ 30" ctr. shall be used for TYPE B longitudinal joints.
  - Refer to Exhibit 13A for joint and bar requirements for different street classifications. Note that width and location of each poured portion of the pavement may change the type and location of joint required.
  - Transverse or longitudinal construction joints in all formed pavement may be made with groover or tool, if such device has been approved in advance by the St. Louis County Department of Highway & Traffic.
  - The locations of the Type B and Type F longitudinal construction joints in above sections may be interchanged for the different widths of construction if approved in advance.



**4\"/>**