

NORFOLK AND WESTERN RAILROAD

CIVIC PARK DR

LINCOLN STREET (50' W.)

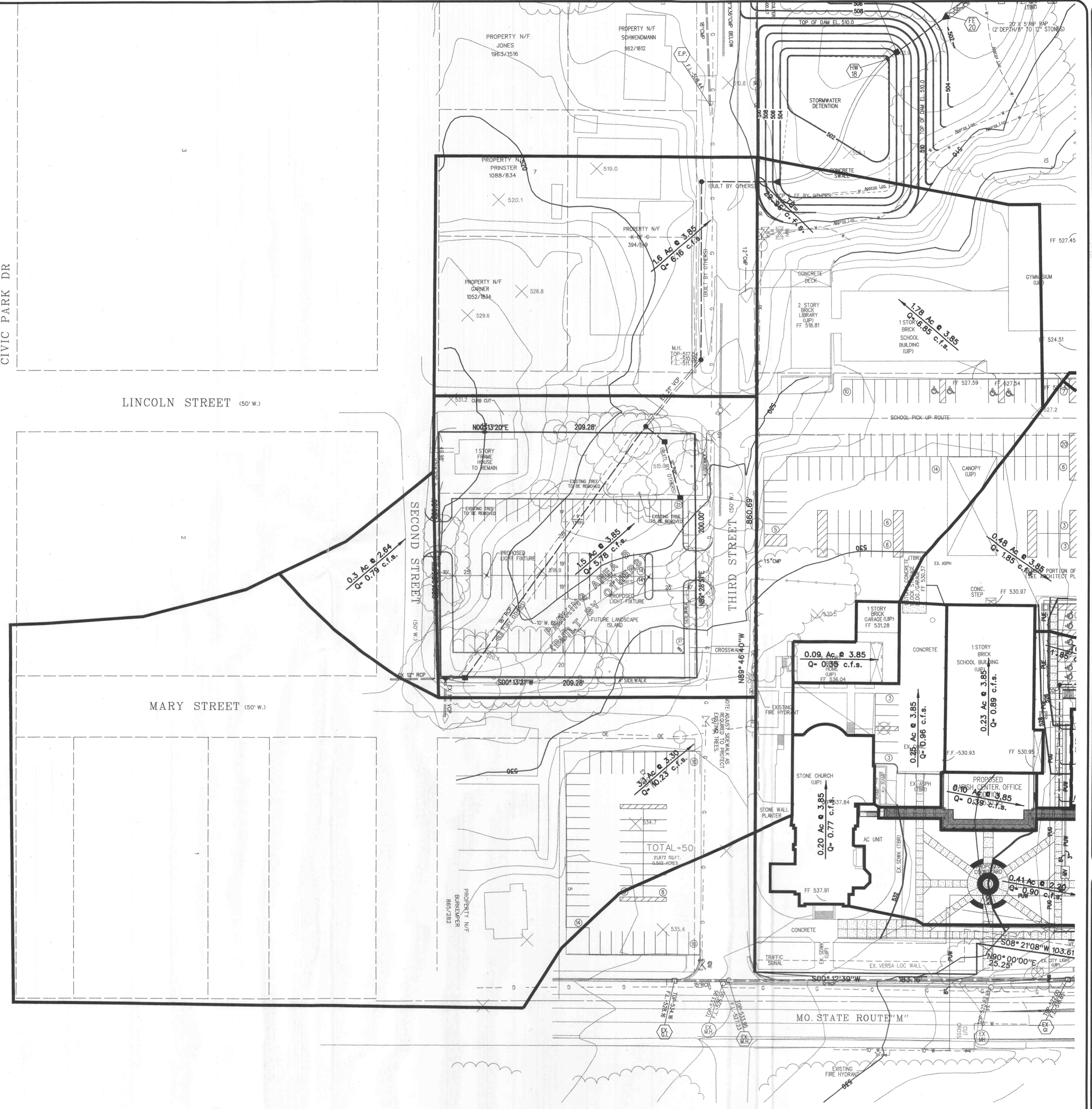
MARY STREET (50' W.)

SECOND STREET

THIRD STREET

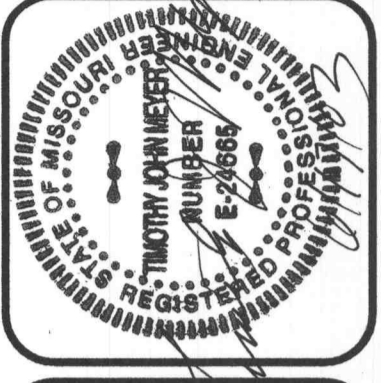
MO. STATE ROUTE "M"

NOTE: THIS SHEET TO BE USED FOR DRAINAGE AREA PURPOSES ONLY. NOT TO BE USED AS CONSTRUCTION PLANS.



Chadwell
 CHIDINI ASSOCIATES
 700 Corporate Park Drive
 Suite 250
 St. Louis, Missouri 63105
 314-725-5588
 Fax 314-725-4347

VOLZ



ASSUMPTION
 of Blessed Virgin Mary Church
 O'FALLON, MISSOURI

DRAINAGE AREA MAP

Base Map No. XX-XX	Design By: J.A.F.
P = XXXXX-XX	Drawn By: J.R.S.
7004	Checked By: W.B.K.

FILE NUMBER 1102.01

A-17-03
C5A