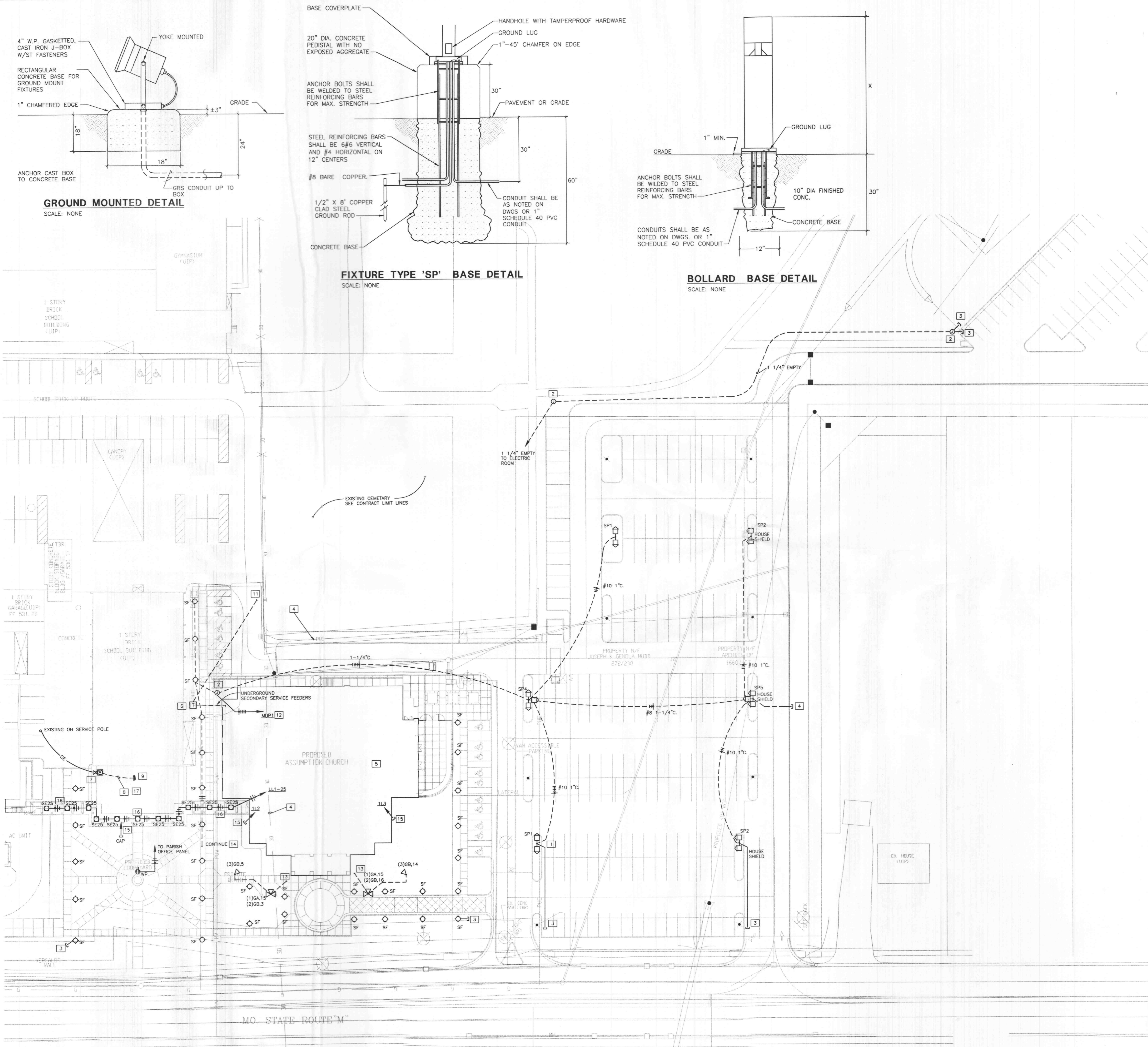
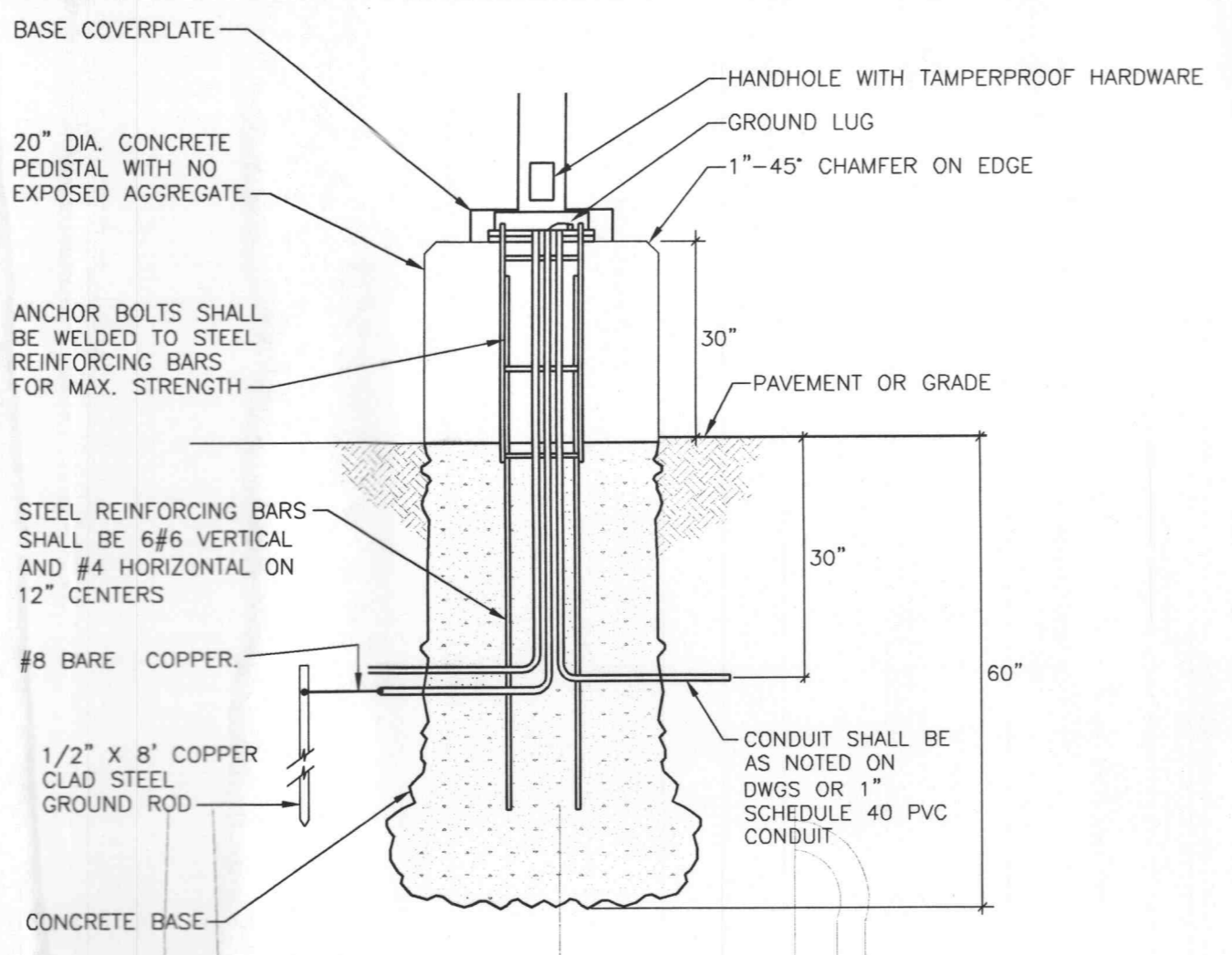


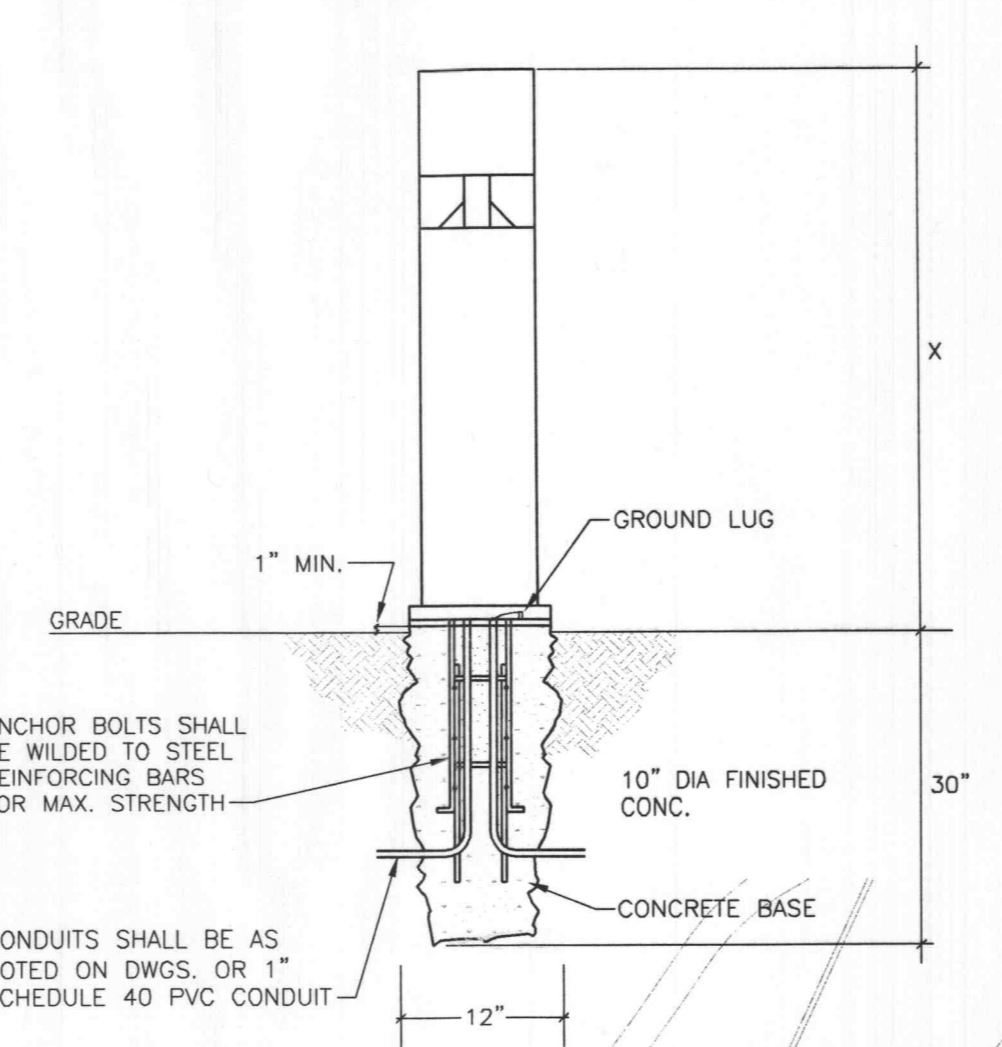
three-eighths inch = one foot
 one-eighth inch = one foot
 one-quarter inch = one foot
 one-half inch = one foot
 one inch = one foot
 one and one-half inches = one foot
 two inches = one foot
 three-quarters inch = one foot
 one-half inch = one foot
 three-eighths inch = one foot
 one-eighth inch = one foot
 one-quarter inch = one foot
 one-half inch = one foot
 one inch = one foot
 one and one-half inches = one foot
 two inches = one foot



- KEYED NOTES: (THIS DRAWING ONLY)**
- CONNECT ONE LUMINAIRE DUSK TO DAWN. ALL OTHER SP FIXTURE SHALL BE DUSK ON PRESET OFF.
 - PROVIDE QUAZITE 12" X 18"D GASKETED BOX FLUSH IN GROUND BOX WITH TAMPER HARDWARE AND "ELECTRIC" LOGO FOR FUTURE LIGHTING.
 - STUB AND CAP 1" C. 24" BELOW GRADE.
 - RELOCATION OF OVERHEAD ELECTRICAL AND EASEMENT AS SPECIFIED BY CIVIL ENGINEER.
 - SITE DEMOLITION PER CIVIL PLANS.
 - PAD MOUNTED UTILITY TRANSFORMER BY AMEREN UE.
 - PROVIDE A 200A OVERHEAD LATERAL, 120/240 VOLT, 1 ϕ , WEATHER HEAD AND SECONDARY METER PER AMEREN U.E. PROVIDE GROUND ROD AT METER AND GROUND IN ACCORDANCE WITH NEC AND AMEREN U.E.
 - PROVIDE UNDERGROUND SERVICE FEEDER (3)#2/0 IN 2" GRS PIPE TO SERVICE PANEL AS LOCATED BY OWNER.
 - PROVIDE 120/240V, 1 ϕ , 3 WIRE SERVICE PANEL WITH 200A 2 POLE MAIN CIRCUIT BREAKER AND (30)20A-1P, (2)20A-2P, (1)40A-2P CIRCUIT BREAKERS. PROVIDE CONNECTION TO ROOF TOP UNIT. ALL OTHER CONNECTION BY OWNER FOR OWNER FINISHED OFFICE SPACE.
 - METER FOR NEW 480V, 3 PHASE, 4 WIRE SERVICE.
 - COORDINATE LOCATION AND UNDERGROUND PRIMARY REQUIREMENTS WITH AMEREN U.E.
 - 1 1/4" WITH (6) #8, (1) #10G TO LIGHTING CONTROL CONTACTORS.
 - SEE CONTINUATION ON LIGHTING PLAN.
 - CONNECT BOLLARD LIGHTING TO DUSK ON PRESET OFF.
 - STUB AND CAP 1" PVC CONDUIT 24" BELOW GRADE FROM PANEL INDICATED OR PARISH OFFICE PANEL FOR FUTURE WORK.
 - LIGHTING UNDER COVERED WALKWAY SHALL BE CONNECTED TO DUSK ON PRESET OFF RELAY.
 - PARISH OFFICE - SEE DESIGN BUILD SPECIFICATION.

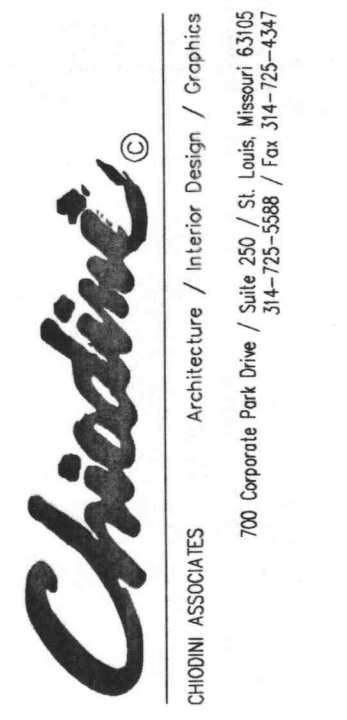


FIXTURE TYPE 'SP' BASE DETAIL
SCALE: NONE



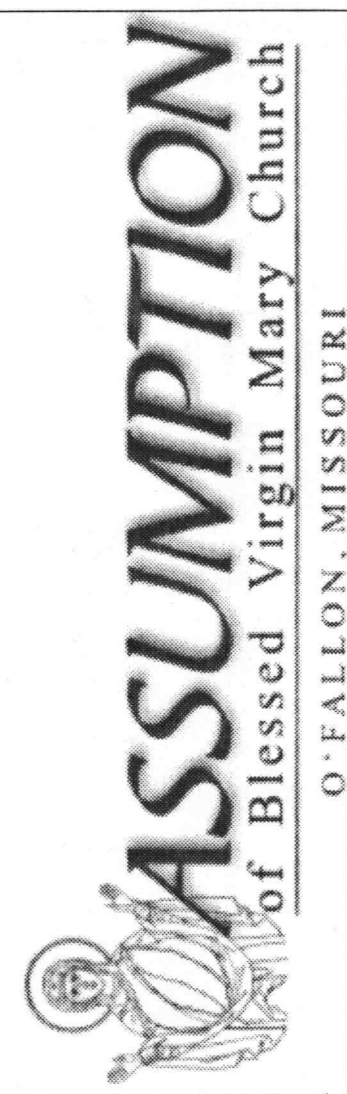
BOLLARD BASE DETAIL
SCALE: NONE

GROUND MOUNTED DETAIL
SCALE: NONE



HEIDEMAN ASSOCIATES, INC.
 A Zak Company
 13545 Barrett Parkway Drive
 Suite 200
 St. Louis, Missouri 63021

HEIDEMAN ASSOCIATES, INC.
 A Zak Company
 13545 Barrett Parkway Drive
 Suite 200
 St. Louis, Missouri 63021



REVISIONS:
 6/17/03 - REVISED FOR 0.5FC

02272 E10



SITE PLAN
 PROJECT: 2001.042
 DATE: 11 MARCH 2003
 DRAWN: B.S.

DISCLAIMER OF RESPONSIBILITY
 I hereby specify, that this document is authorized by my seal. I hereby disclaim any responsibility for all other plans, specifications, estimates, reports, or other documents, or instruments relating to or intended to be used for any part or parts of the architectural or engineering project or survey.

Heideman & Associates, Inc.
 Harry Aumon
 Missouri Engineer
 License E-16927

PER BOCA NATIONAL BUILDING CODE - 1999:
 ALL NEW WORK TO BE CONSTRUCTED HEREIN SHALL COMPLY WITH ALL EARTHQUAKE RESTRAINT REQUIREMENTS OF SEISMIC HAZARD EXPOSURE GROUP II.

SITE PLAN
 SCALE: 1" = 30'

E1.0

HA# 02272

REVISED PERMIT SET - 30 APRIL 2003