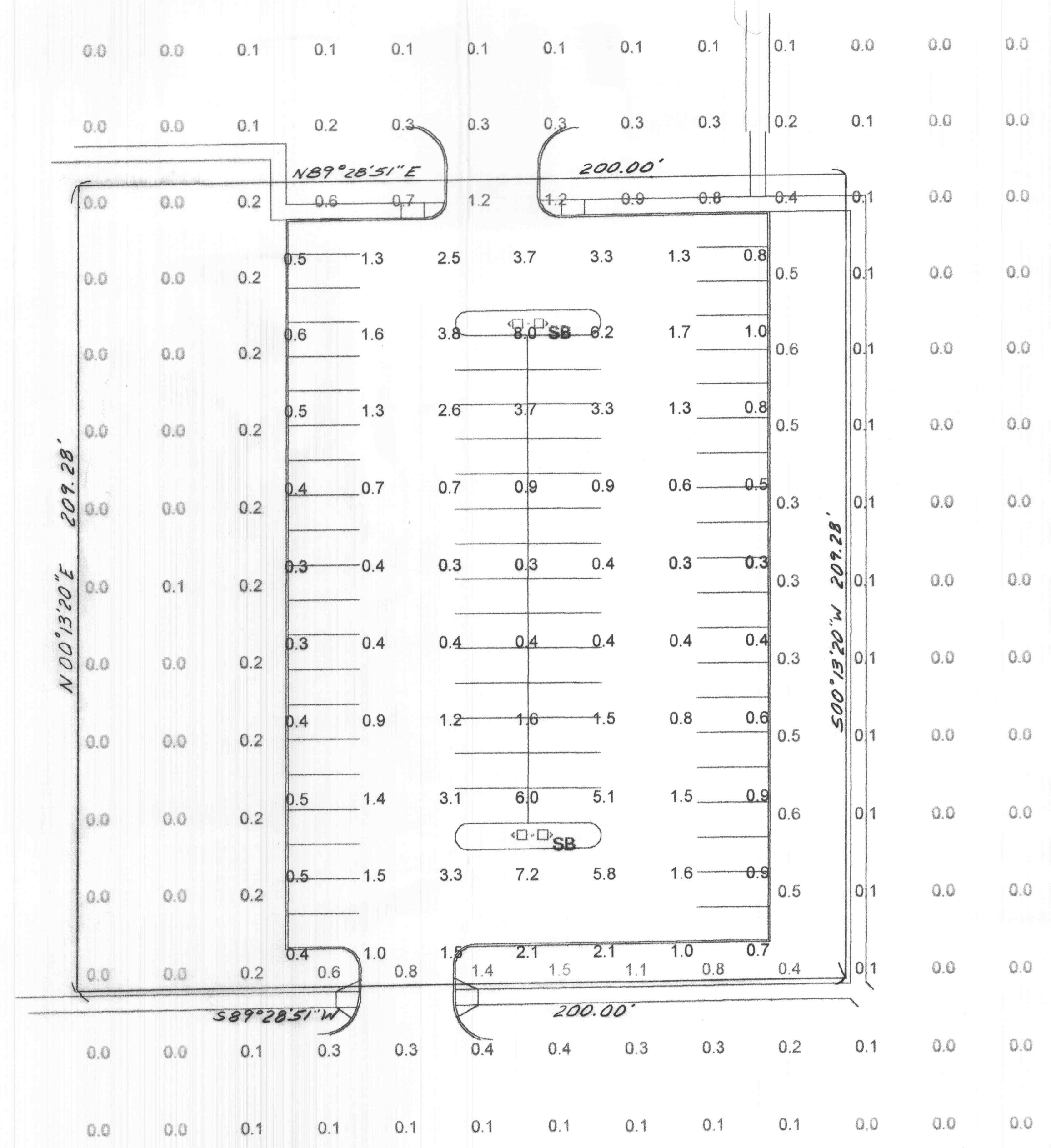
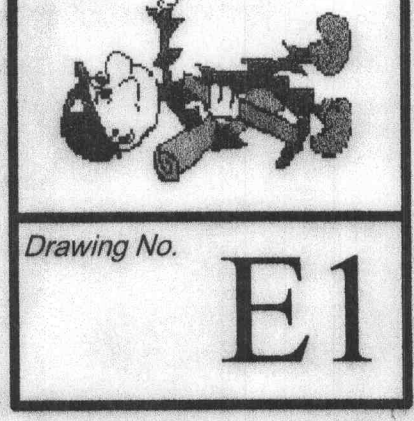


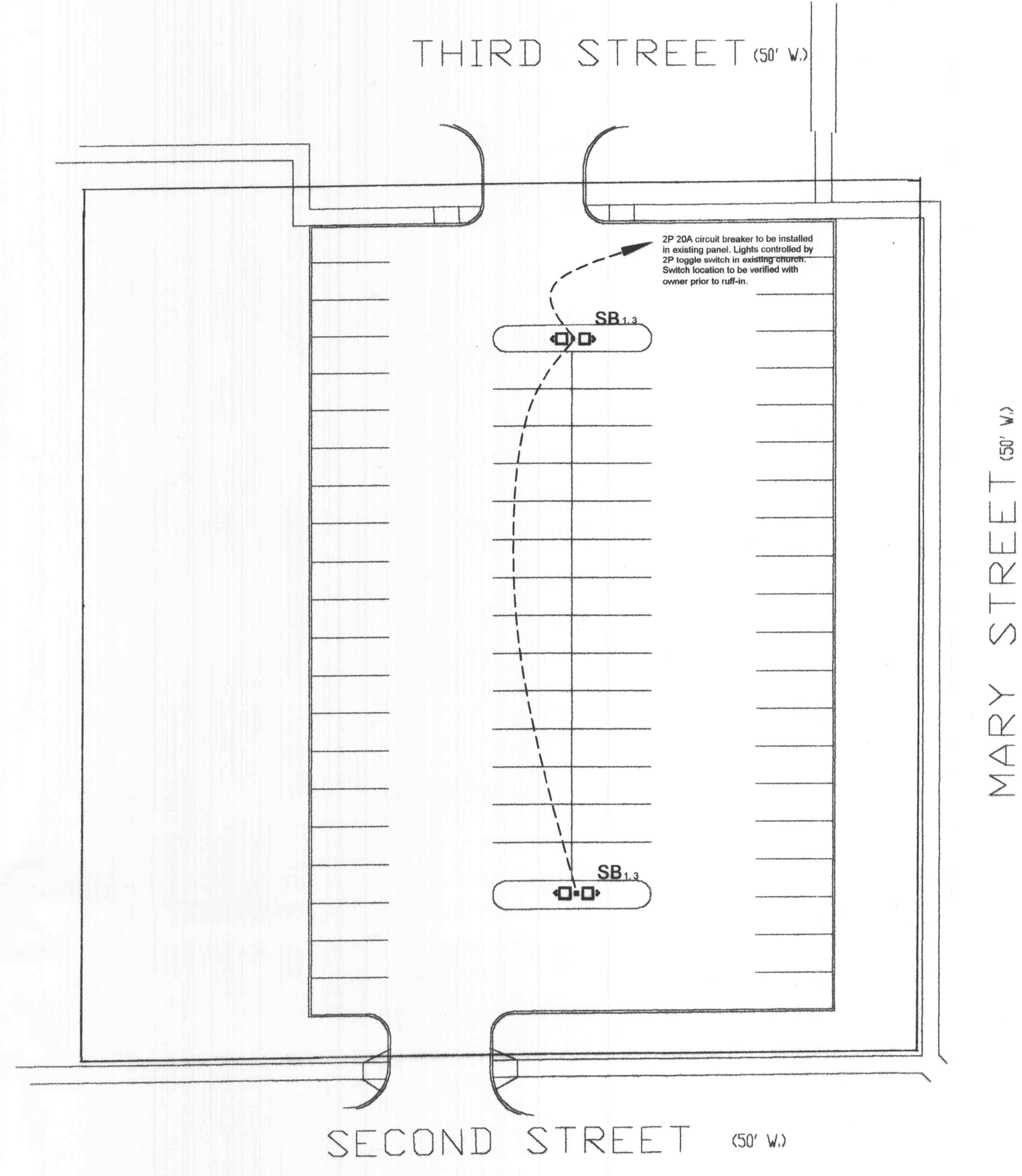
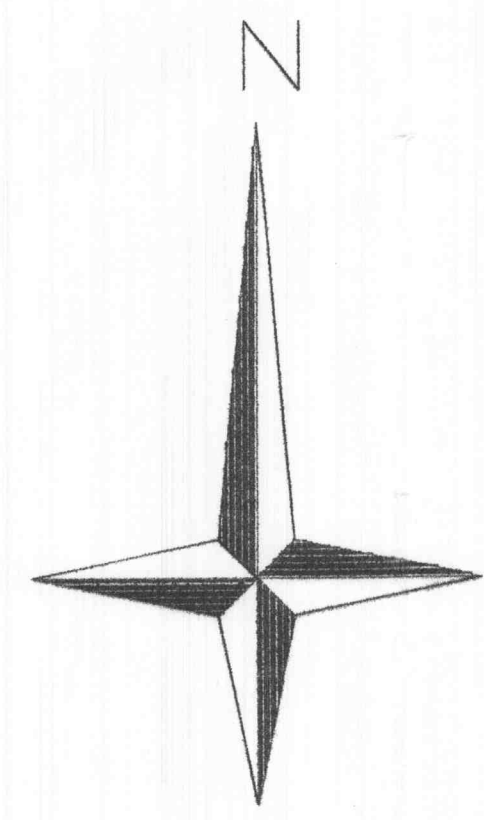


Project Name: **Assumption Church
 Parking Lot**
 O'Fallon, Missouri

DICKHERBER ELECTRIC, INC.
 1708 South Fifth Street
 St. Charles, MO 63303
 Residential Commercial Industrial
 Phone: (636) 946-9432 FAX: (636) 946-0336



Photometric Plan
 Scale 1" = 20'



Site Plan
 Scale 1" = 20'

Symbol	Label	Qty	Catalog Number	Description	Lamp	File	Lumens LLF	Watts
SB	SB	4	KAD 400M R4	DIECAST TYPE IV SHORT CUTOFF LUMINAIRE	400 WATT METAL HALIDE HORIZONTAL BURN	911110101.IES	32000 0.72	910

STATISTICS					
Description	Avg	Max	Min	Max/Min	Avg/Min
Calc Zone #2	0.2 fc	1.5 fc	0.0 fc	N/A	N/A
Calc Zone #3	1.6 fc	8.0 fc	0.3 fc	26.7:1	5.5:1

LUMINAIRE LOCATIONS									
No.	Label	X	Y	Z	MH	Orientation	Tilt	X	Aim Y Z
1	A	4957.8	4912.4	27.0	27.0	90.0	0.0		
2	A	4958.3	4780.2	27.0	27.0	90.0	0.0		
3	A	5296.2	4913.1	27.0	27.0	90.0	0.0		
4	A	5296.7	4780.9	27.0	27.0	90.0	0.0		

Stipulation for reuse or Alteration
 This drawing was prepared for use on a specific site, contemporaneously with its issue date, and it is not suitable for use on a different project site or at a later time. Use of this drawing for reference or example on another project requires the services of a properly licensed Engineer. Reproduction of this drawing for reuse on another project is not authorized. Alterations to this drawing by anyone other than the Engineer of record requires written authorization. Failure to comply with this stipulation may be contrary to the law.

Area: St. Charles County

Date of Issue: 9/26/02

DATE	REVISION