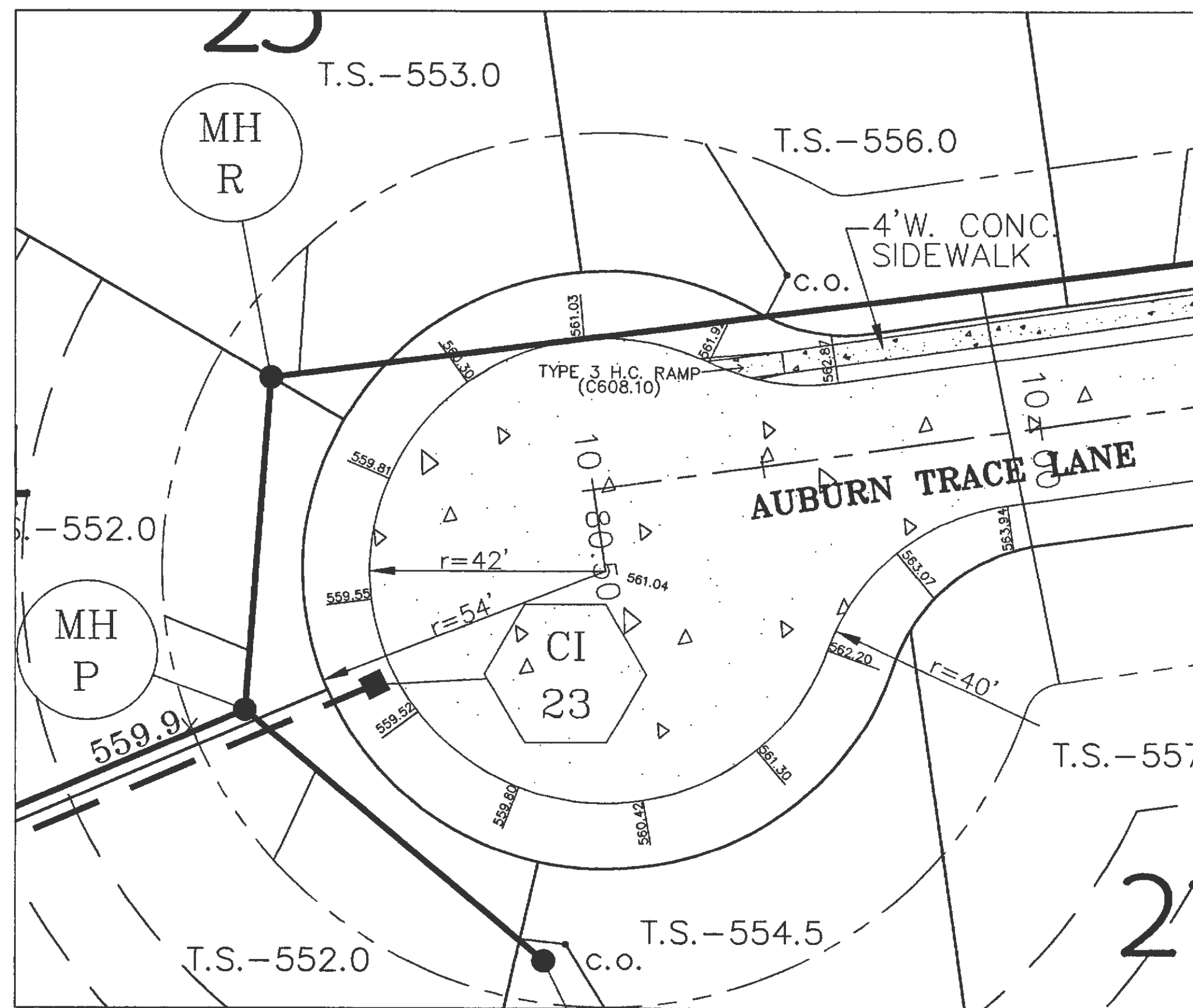
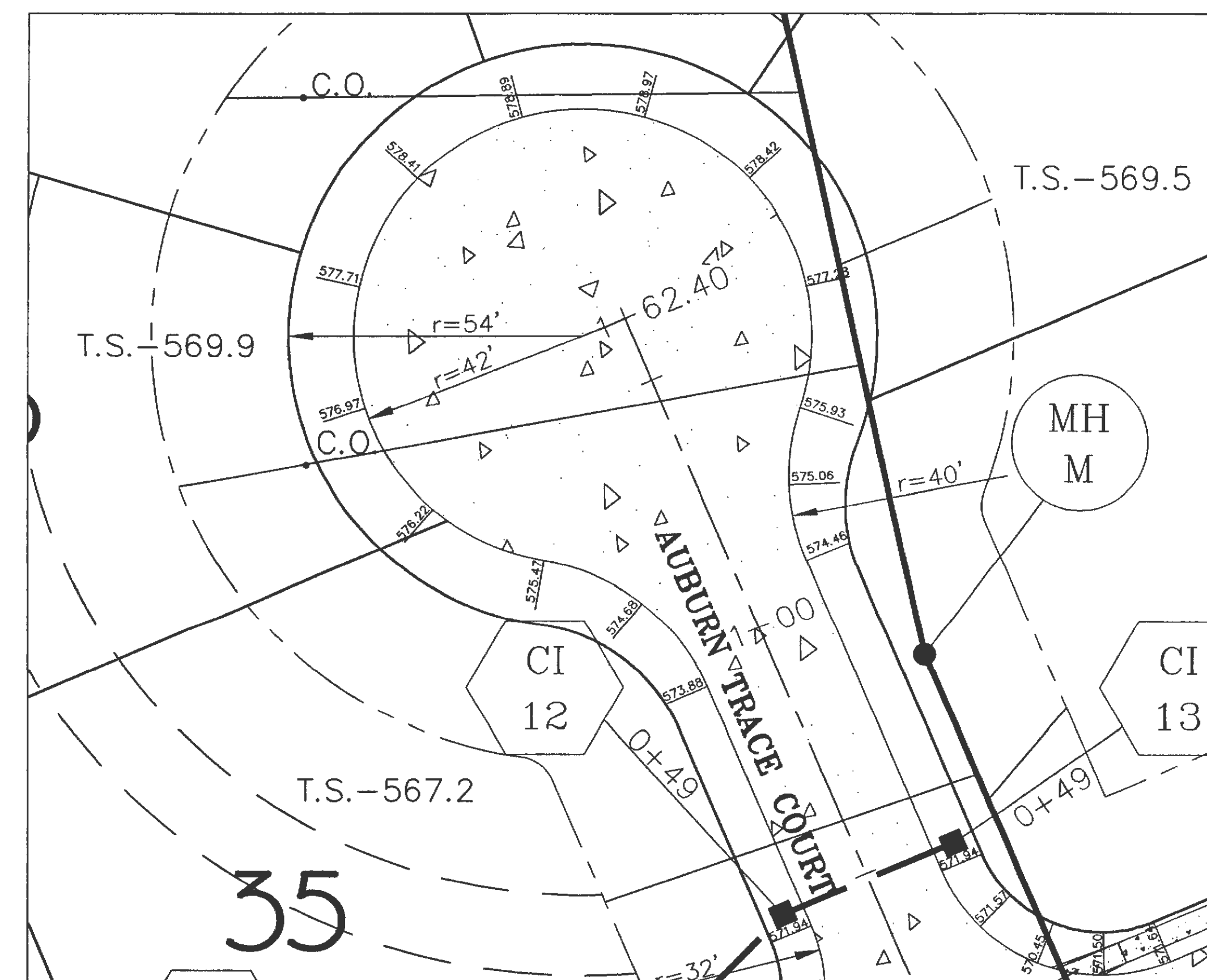


Cul-de-sac
Warping
SCALE: 1"=20'

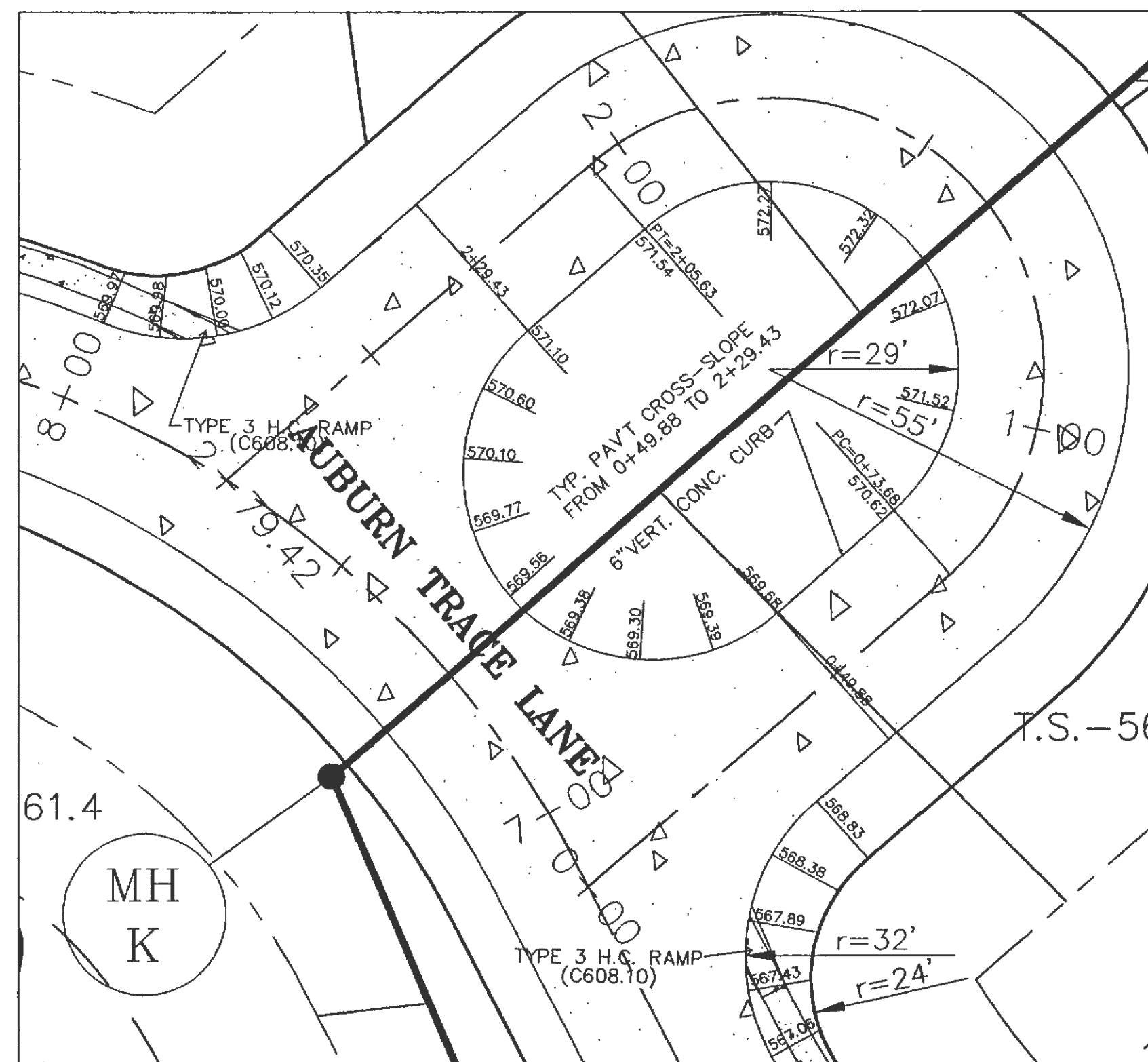


Cul-de-sac
Warping
SCALE: 1"=20'

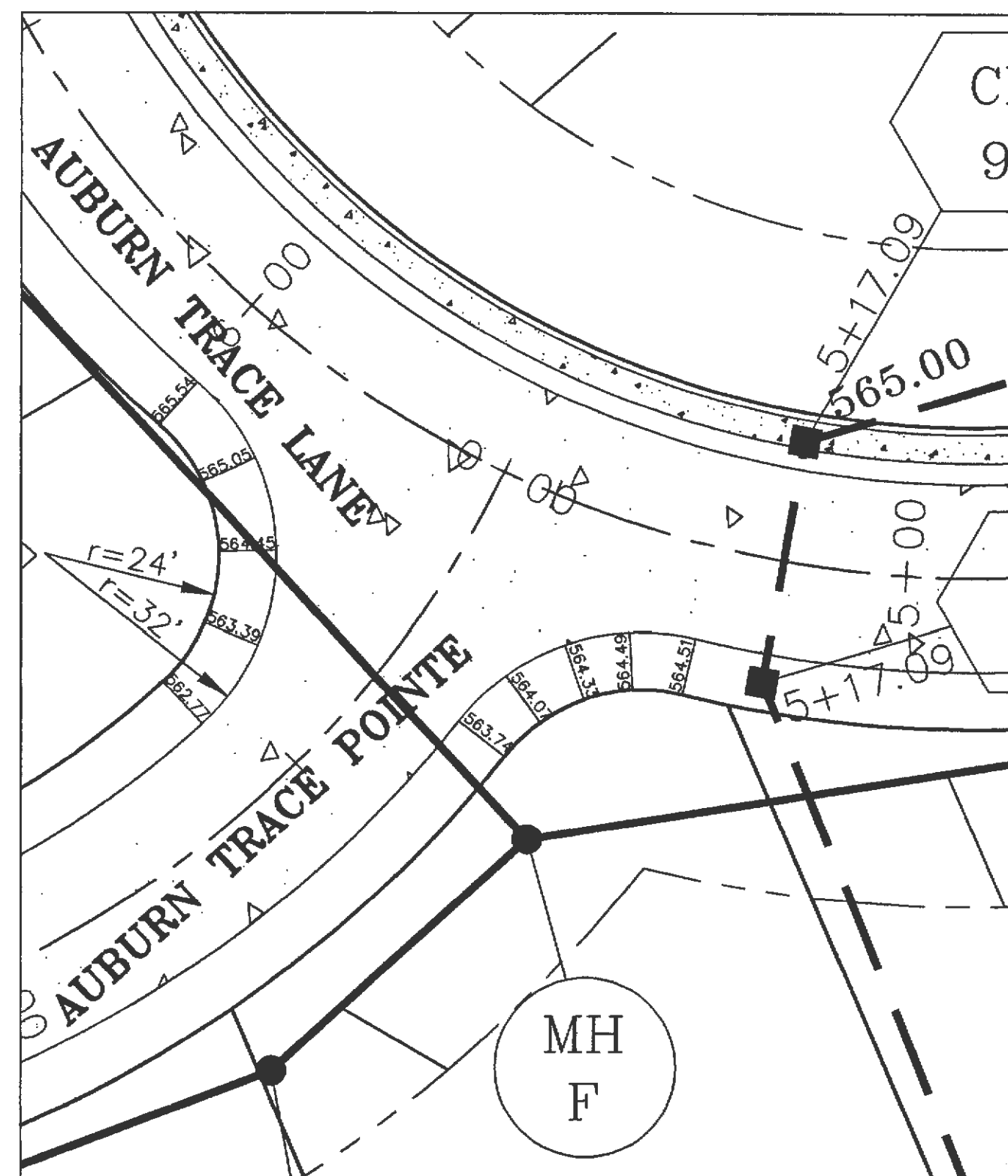


Cul-de-sac
Warping
SCALE: 1"=20'

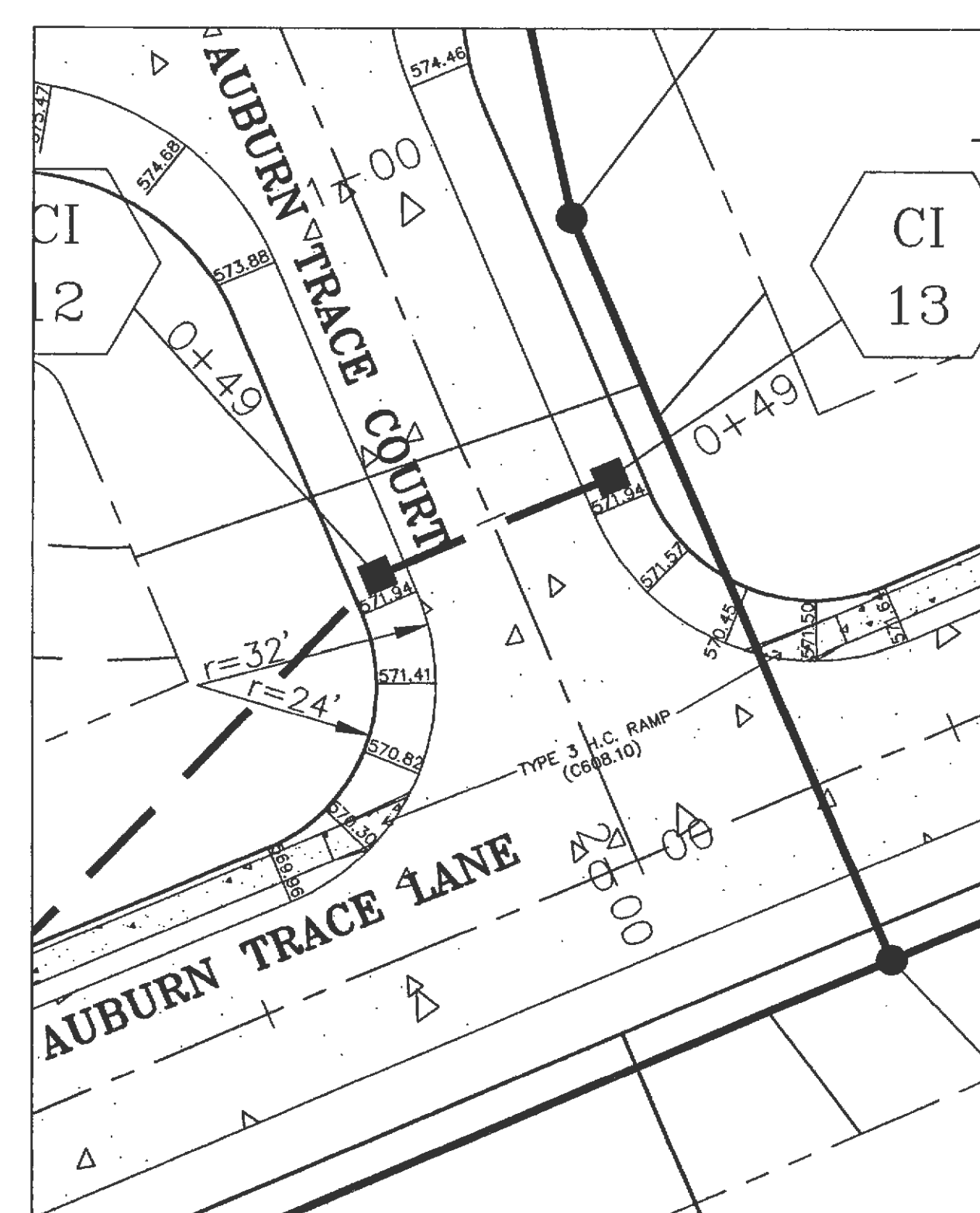
ELEVATIONS SHOWN ARE TOP OF CURB
All cul-de-sacs must be hand-formed beginning at the PC's of the roundings.
A continuous slope must be maintained from the center of the cul-de-sacs to the curb.



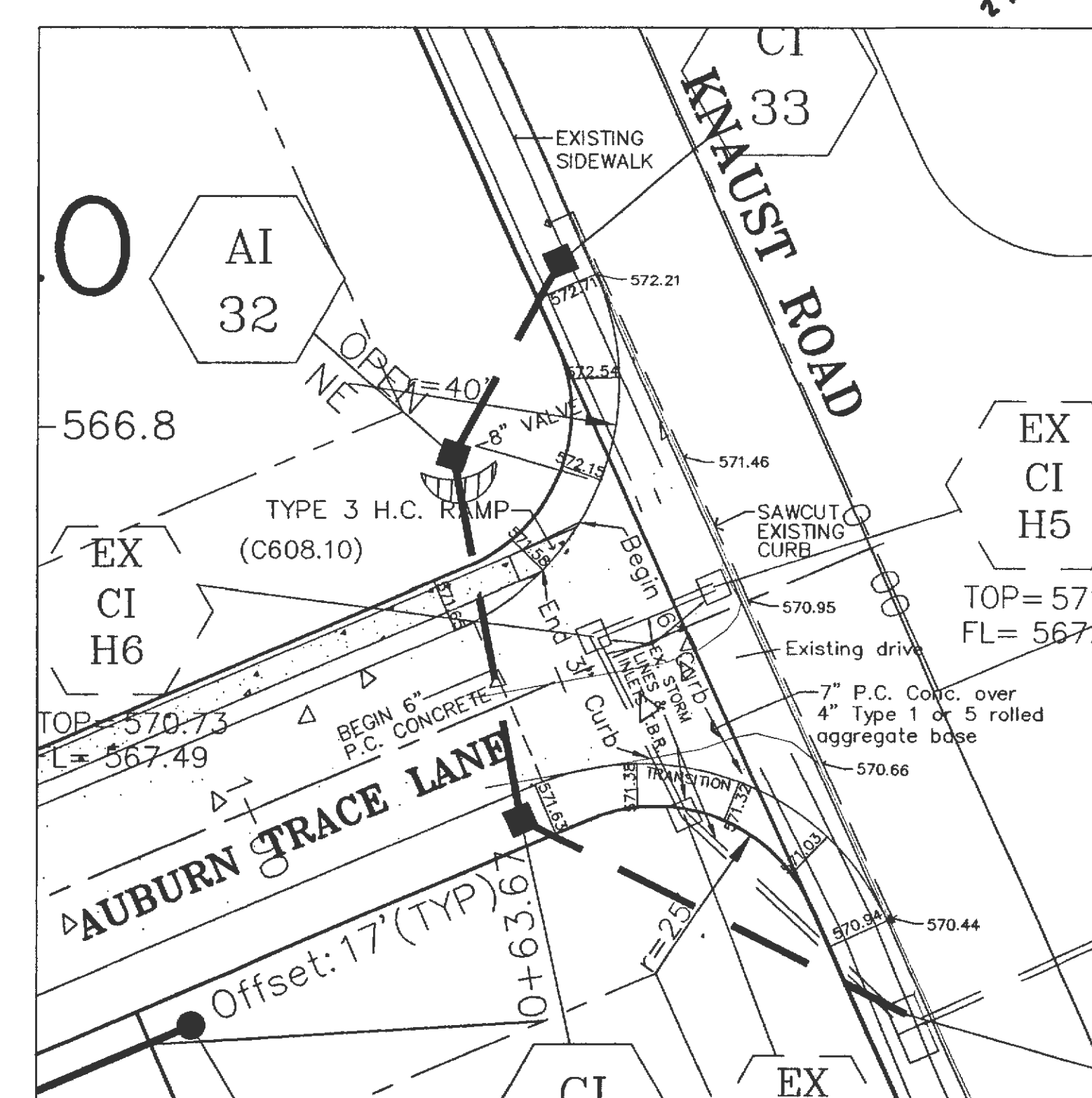
Intersection
Rounding
SCALE: 1"=20'



Intersection
Rounding
SCALE: 1"=20'



Intersection
Rounding
SCALE: 1"=20'



Entrance
Detail
SCALE: 1"=20'

NOTE: The Knaust Road curb will be removed and replaced per direction of a County inspector.