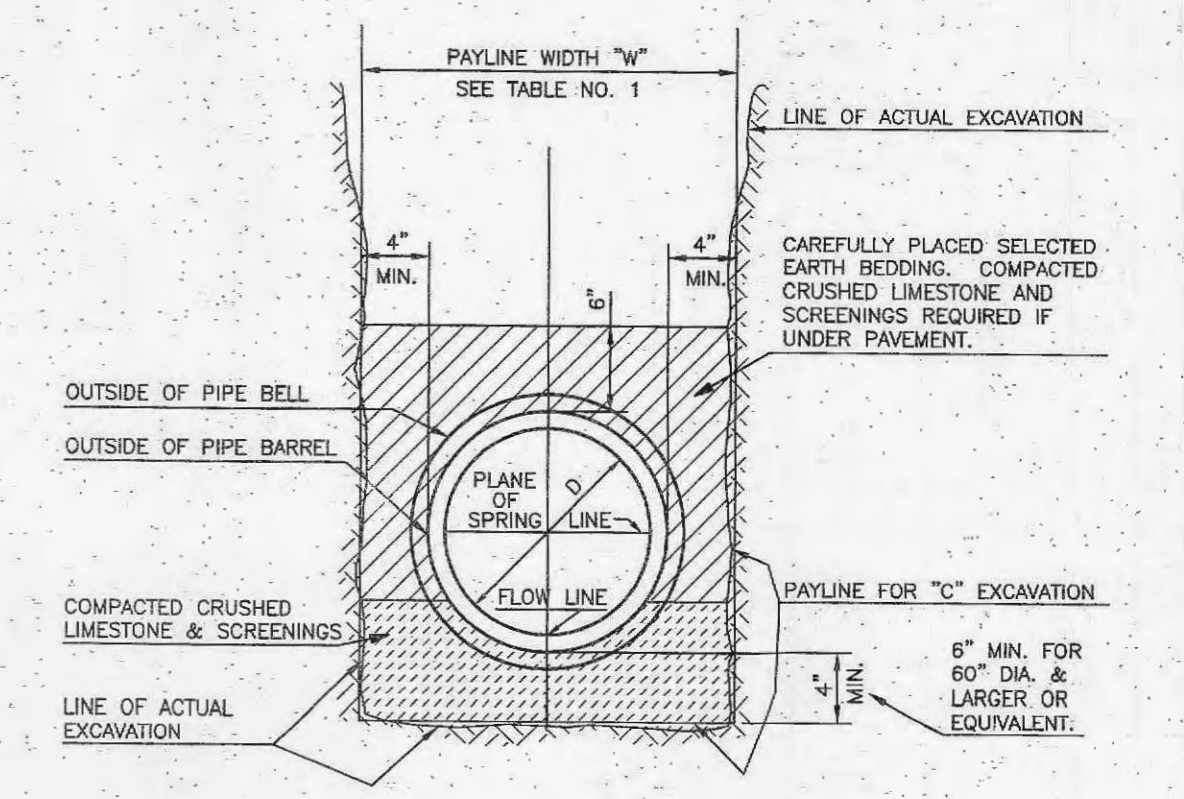
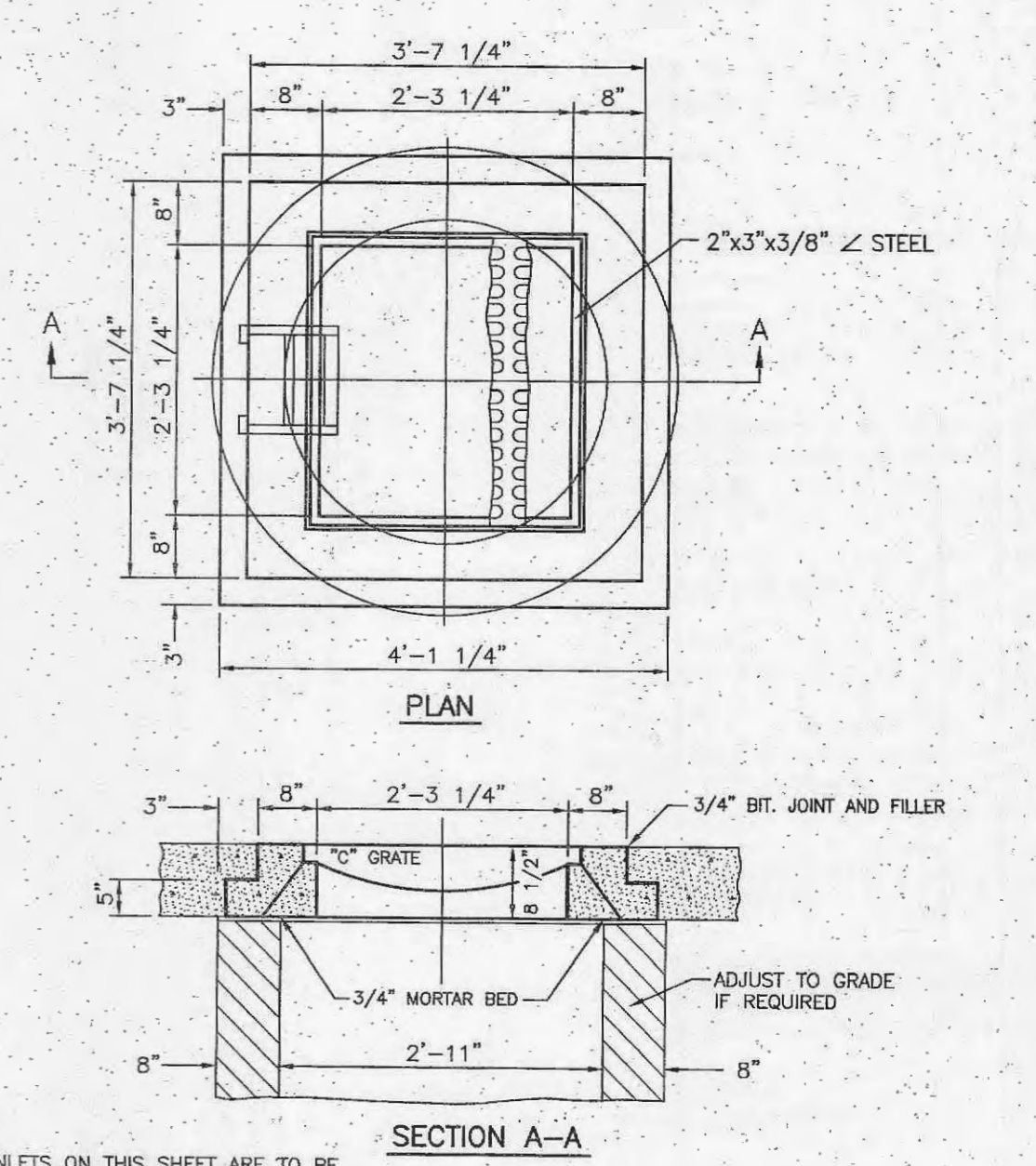


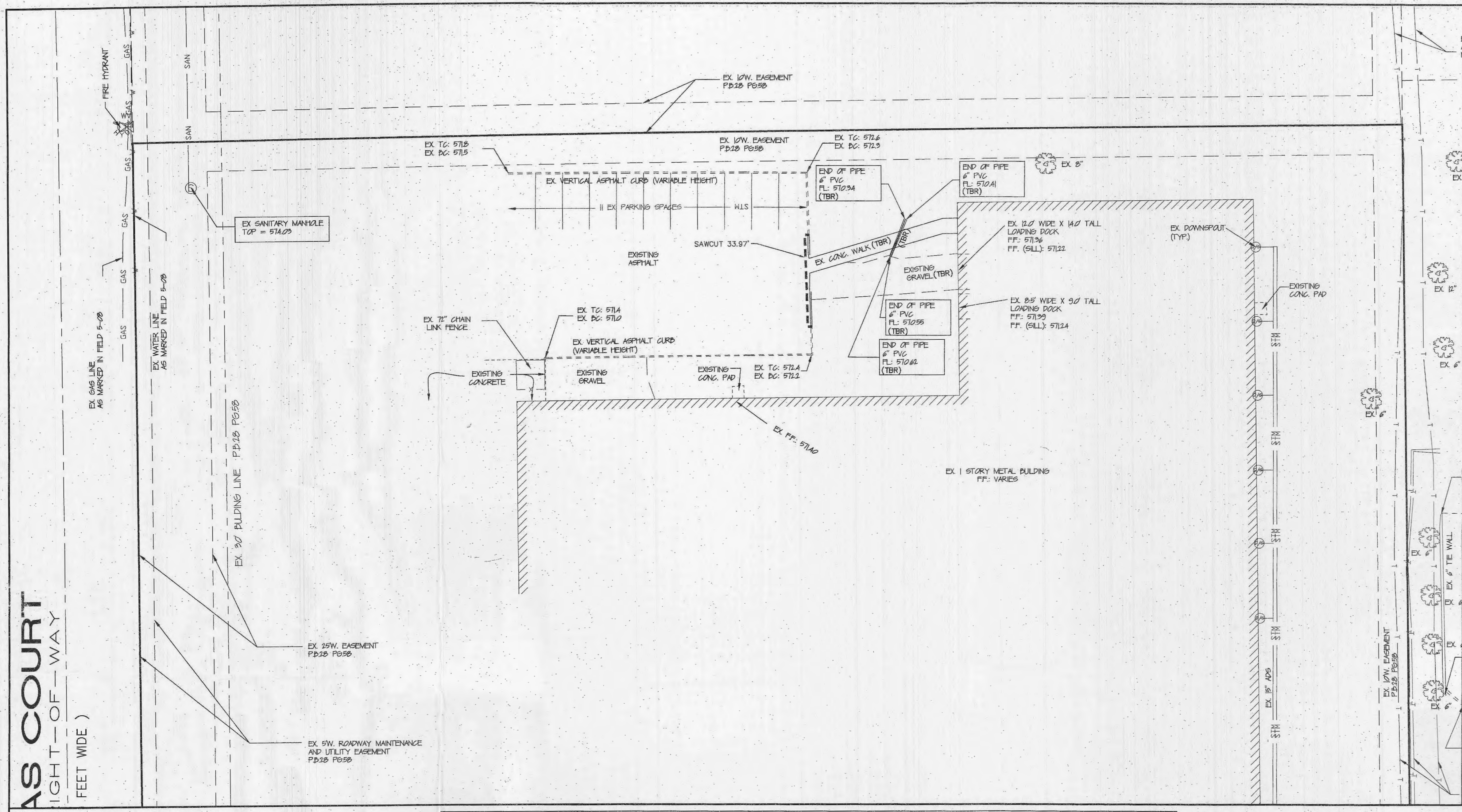
PIPE BEDDING CLASS "C"
(FOR ALL PIPE EXCEPT REINFORCED CONCRETE PIPE)



PIPE BEDDING CLASS "C"
(MODIFIED FOR REINFORCED CONCRETE PIPE)



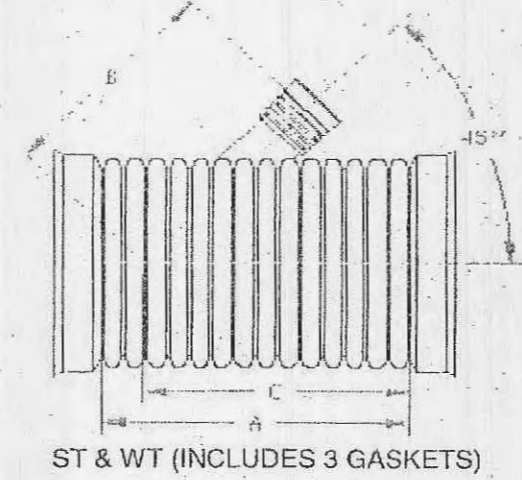
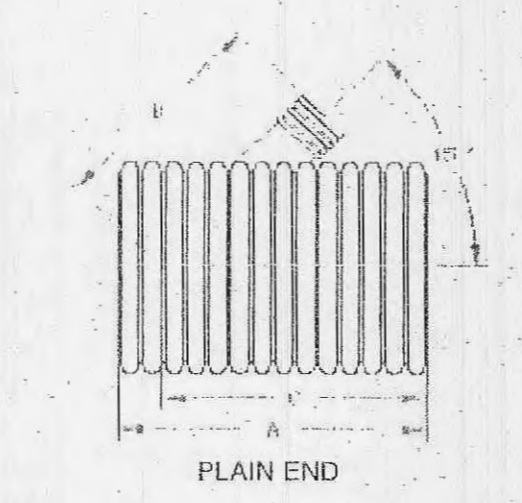
NOTE: INLETS ON THIS SHEET ARE TO BE USED IN LOCATIONS WHERE STANDARD OPEN THROAT INLETS CAN NOT BE USED, IN PAVED TRAFFIC WAY, AND IN LIMITED EASEMENTS.



AS COURT
LIGHT-OF-WAY
FEET WIDE)

DUAL WALL FABRICATED REDUCING WYES
15"x4" - 15"x12" DIAMETER

PART #	PIPE SIZE	A	B	C	JOINT
1580AN	15 x 4 in (375 x 100 mm)	28.9 in (734 mm)	18.4 in (468 mm)	23.0 in (585 mm)	-
1580AN85B	15 x 4 in (375 x 100 mm)	23.6 in (599 mm)	17.7 in (450 mm)	20.4 in (519 mm)	ST
1580AN65B	15 x 4 in (375 x 100 mm)	23.6 in (599 mm)	17.7 in (450 mm)	20.4 in (519 mm)	WT
1581AN	15 x 6 in (375 x 150 mm)	31.5 in (800 mm)	19.4 in (493 mm)	24.3 in (618 mm)	-
1581AN85B	15 x 6 in (375 x 150 mm)	26.3 in (668 mm)	20.9 in (531 mm)	21.7 in (552 mm)	ST
1581AN65B	15 x 6 in (375 x 150 mm)	26.3 in (668 mm)	20.9 in (531 mm)	21.7 in (552 mm)	WT
1582AN	15 x 8 in (375 x 200 mm)	34.2 in (869 mm)	21.1 in (535 mm)	25.6 in (651 mm)	-
1582AN85B	15 x 8 in (375 x 200 mm)	28.9 in (734 mm)	22.4 in (569 mm)	23.0 in (585 mm)	ST
1582AN65B	15 x 8 in (375 x 200 mm)	28.9 in (734 mm)	22.4 in (569 mm)	23.0 in (585 mm)	WT
1583AN	15 x 10 in (375 x 250 mm)	39.4 in (1001 mm)	23.8 in (604 mm)	28.2 in (717 mm)	-
1583AN85B	15 x 10 in (375 x 250 mm)	34.1 in (866 mm)	25.6 in (655 mm)	25.6 in (651 mm)	ST
1583AN65B	15 x 10 in (375 x 250 mm)	34.1 in (866 mm)	25.6 in (655 mm)	25.6 in (651 mm)	WT
1584AN	15 x 12 in (375 x 300 mm)	42.0 in (1067 mm)	29.7 in (754 mm)	29.5 in (749 mm)	-
1584AN85B	15 x 12 in (375 x 300 mm)	36.8 in (935 mm)	27.8 in (706 mm)	26.9 in (684 mm)	ST
1584AN65B	15 x 12 in (375 x 300 mm)	36.8 in (935 mm)	27.8 in (706 mm)	26.9 in (684 mm)	WT



* = PLAIN END
ST = SOIL TIGHT
WT = WATER TIGHT

NOTE: ALL FITTINGS DIMENSIONS ARE FOR REFERENCE ONLY

LDSD
DRAWING # 2315
DRAWN BY: JCB 06.14.06
APPROVED BY: JCB 06.26.07
REVISIONS: NJP 06.14.07