

NO PART OF THE DRIVEWAY EXCLUDING TAPERS SHALL BE CONSTRUCTED OUTSIDE OF THE PROPERTY FRONTAGE.

SURFACING SHALL BE AS SHOWN ON THE PLANS OR PERMIT.

LENGTH OF PIPE SHALL BE DETERMINED BY DEPTH AND LOCATION OF DITCH (SEE PLANS).

IF A PAVED APPROACH IS REQUIRED, REFER TO STANDARD PLAN FOR CONSTRUCTION DETAILS AND CONSTRUCT CURBS (IF REQUIRED) TO MEET CURB ON PAVED APPROACH, TRANSITION REQUIRED FROM 4 INCHES TO 6 INCHES.

CURB OR CURB AND GUTTER BETWEEN RIGHT-OF-WAY LINE AND PIPE MAY MEET LOCAL AGENCY STANDARDS.

THIS DRAWING ILLUSTRATES DRIVEWAY DETAILS FOR MINIMUM SITUATIONS. TRAFFIC VOLUMES, SAFETY CONSIDERATIONS, DRAINAGE CONSIDERATIONS, LOCAL REQUIREMENTS, ETC., MAY DICTATE MORE EXTENSIVE IMPROVEMENTS THAN ILLUSTRATED.

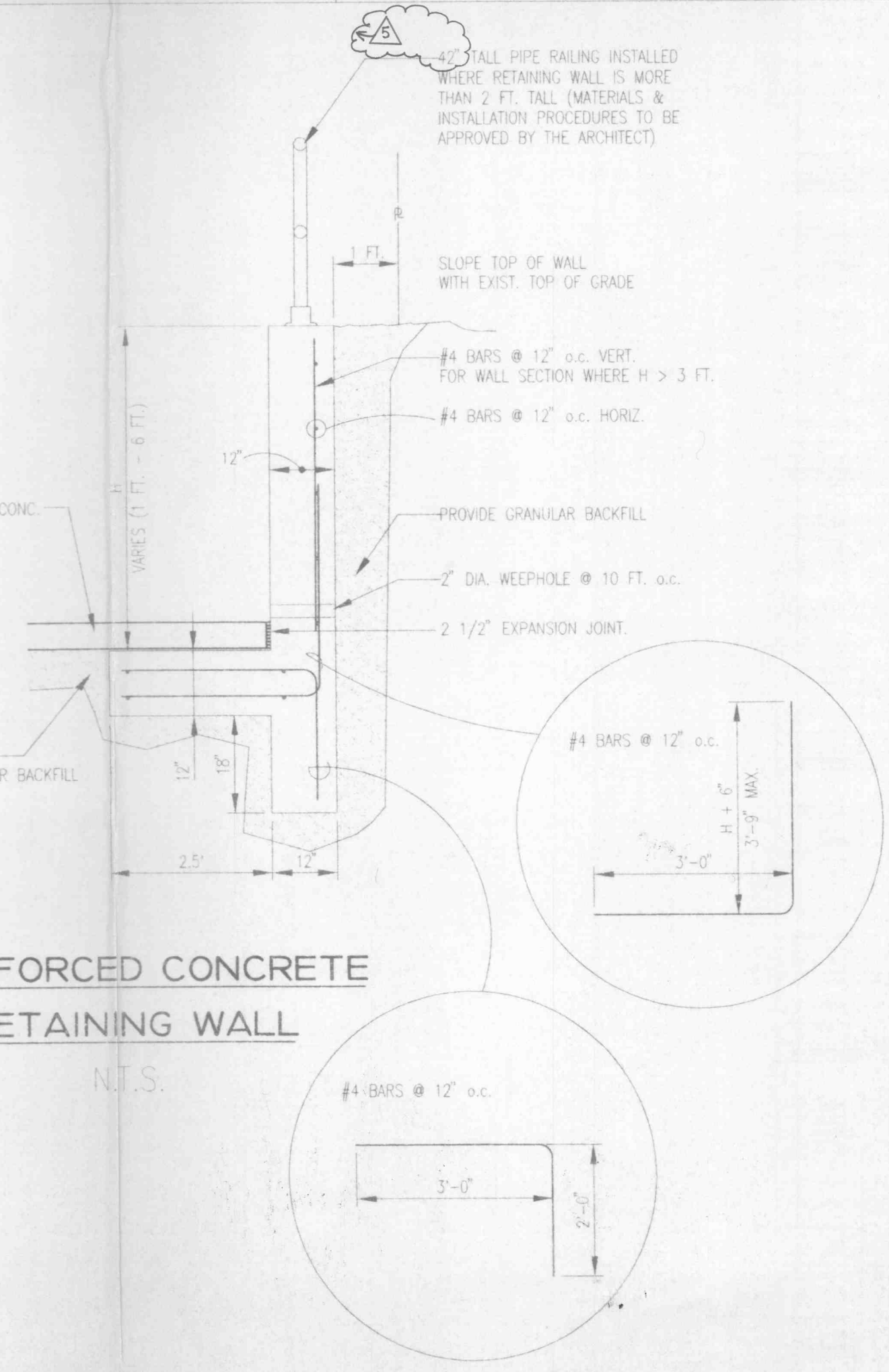
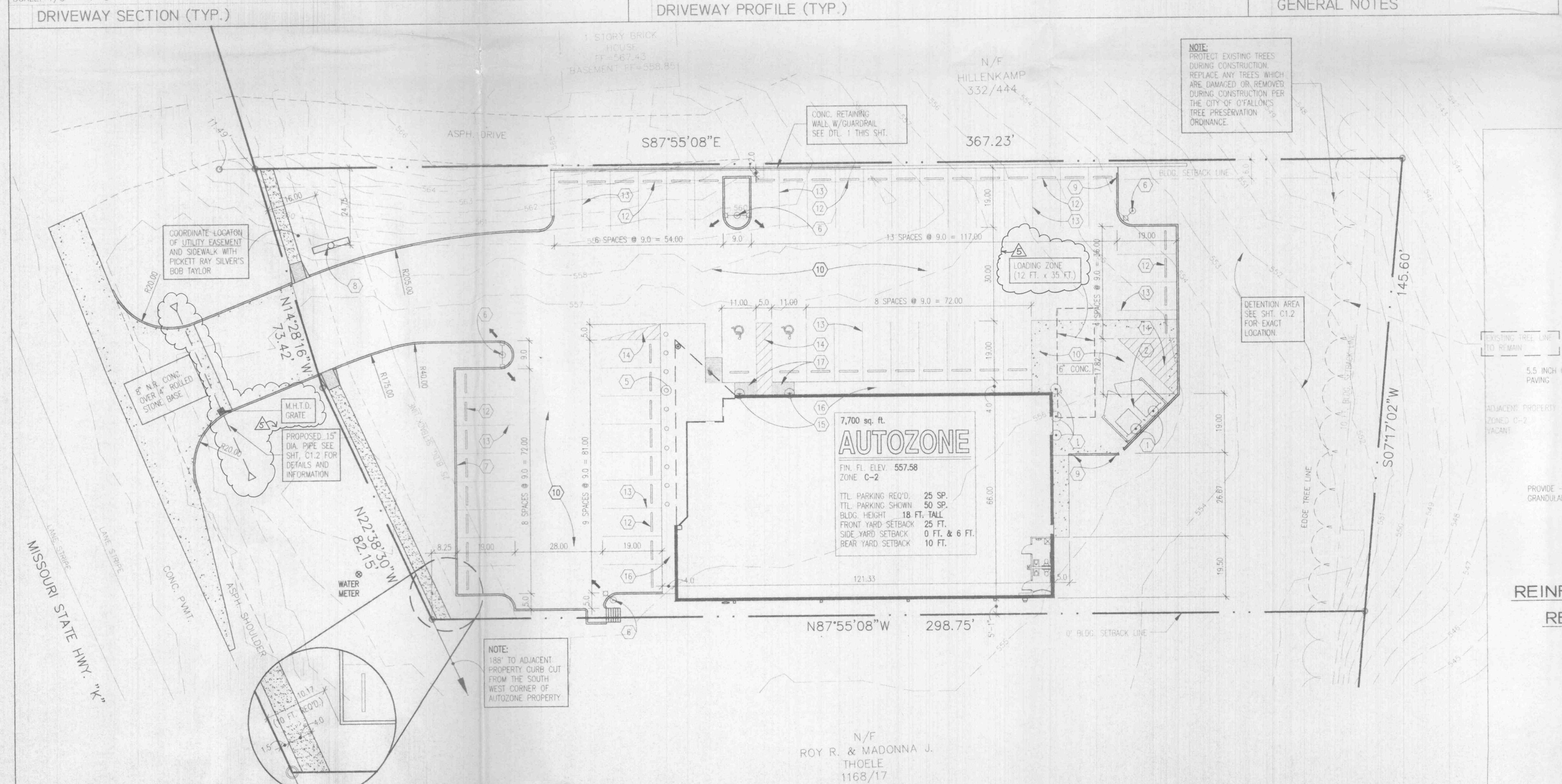
SCALE: 1" = 1'-0"

KEYNOTES

- BUILDING & PAVING**
- APPROVED**
2-1-95
J. King
- PIPE GUARD - SEE DETAIL 7/C2.0.
 - DUMPSTER LAYOUT - SEE DETAIL 1/C2.2, 2/C2.1.
 - CONCRETE LIGHT POLE BASE - SEE DETAIL 3/C2.1.
 - CONCRETE BOLLARD - SEE DETAIL 2/C2.1.
 - CONCRETE LIGHT POLE BASE, SEE DETAIL 3/C2.1. AM LIGHT FIXTURE IN DIRECTION AS INDICATED.
 - CONCRETE CURB & GUTTER - SEE DETAIL 1/C2.0.
 - FREE STANDING SIGN - 6' x 12' x 35' HGT. - SEE SHEET SN.
 - SLOPE END OF CURB 4:1
 - CONCRETE PAVING - SEE DETAIL 5/C2.0. EXPANSION AND CONTROL JOINT - SEE DETAIL 2 & 3/C2.0 AND REFER TO SOILS REPORT FOR MAXIMUM OR MINIMUM SPACINGS.
 - ASPHALT PAVING - SEE DETAIL 4/C2.0.
 - 6'-0" LONG CONCRETE WHEEL STOP PINNED TO PAVEMENT (TYPICAL), LOCATE 3' FROM FACE OF CURB OR SIDEWALK.
 - 4' WIDE PARKING STRIPE PAINTED ORANGE (TYP).
 - 4' WIDE DIAGONAL STRIPES PAINTED ORANGE @ 2' O.C.
 - HANDICAP PARKING SIGN, SEE DETAIL 6/C2.0.
 - CONCRETE SIDEWALK - SEE DETAIL ON SHEET 5-2 FOR SIDEWALKS AROUND BUILDING & SHR. 5-1 FOR LAYOUT
 - CONCRETE HANDICAP RAMP - MAXIMUM SLOPE 8%.
 - NEW CURB-CUT AND APPROACH.
 - NEW LANDSCAPE AREA - PROVIDE 3" TOPSOIL, SEE SHEET L1.0 FOR ADDITIONAL INFORMATION.
 - SEE GRADE FROM BACK OF CURB DOWN TO MATCH THE EXISTING GRADE AT THE PROPERTY LINE.
 - SCREEN WALL - SEE DETAIL 7/C2.1 FOR MATERIAL AND COVER HEIGHT AND FOUNDATION REQUIREMENTS (WRITE HEIGHT OF WALL ON PLAN).

GENERAL NOTES

- PROOF ROLL BUILDING AND ALL PARKING AREAS. NOTIFY THE ARCHITECT OF ANY UNACCEPTABLE AREAS.
- EDGE OF NEW PAVEMENT TO BE FLUSH WITH EXISTING PAVEMENT.
- ALL SIDEWALK, CURB AND GUTTER, STREET PAVING, CURB CUTS, DRIVEWAY APPROACHES, HANDICAP RAMP, ETC. CONSTRUCTED OUTSIDE THE PROPERTY LINE IN THE RIGHT-OF-WAY SHALL CONFORM TO ALL ALL MUNICIPAL AND/OR STATE SPECIFICATIONS AND REQUIREMENTS.
- FOR AREAS OUTSIDE THE PROPERTY LINES REPAIR AND/OR REPLACE ALL DAMAGE DONE TO EXISTING ELEMENTS (SIDEWALKS, PAVING, LANDSCAPING, ETC.) AS REQUIRED BY OWNER AND/OR GOVERNING AUTHORITY.
- FOR PROPOSED UTILITY LOCATION, SEE SHT. C1.1
- FOR PROPOSED LANDSCAPING, SEE SHT. L1.0



Autozone

DESIGN & CONSTRUCTION PHONE: (901) 325-5176
3030 POPLAR AVENUE MEMPHIS, TENNESSEE 38111 FAX: (901) 325-4583

STATE OF MISSOURI
THOMAS HEIDT
REGISTERED ARCHITECT
NUMBER A-7168

PROJECT NO: 0332
PROJECT ADDRESS:
1104 HWY 'K'
O'FALLON
SHEET TITLE:
SITE PLAN

MO. 63366

SCALE: 1" = 20'-0"

REVISIONS
1. 10/21/94
2. 11/21/94
3. 11/29/94
4. 12/19/94
5. 01/23/95
6.
7.
ARCHITECT: RTH
DRAFTSMAN: GLW
CHECKED BY: BAR
DATE: 09/23/94
7N-(R)

CI.0