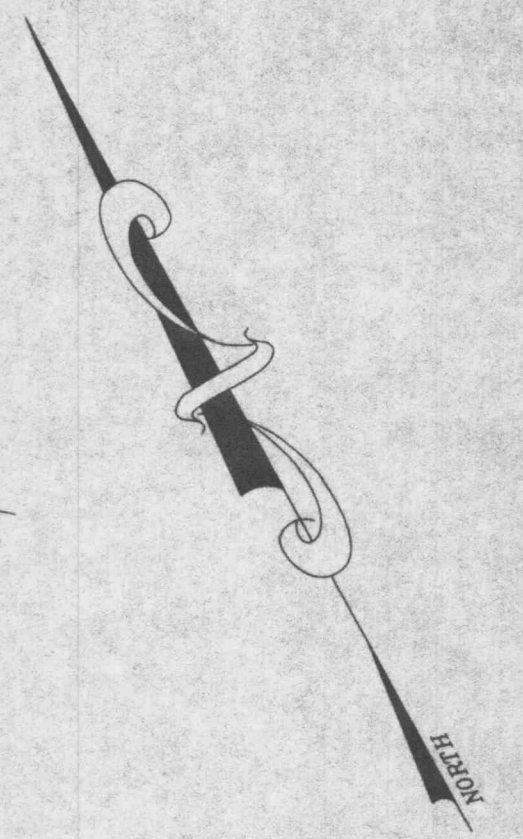
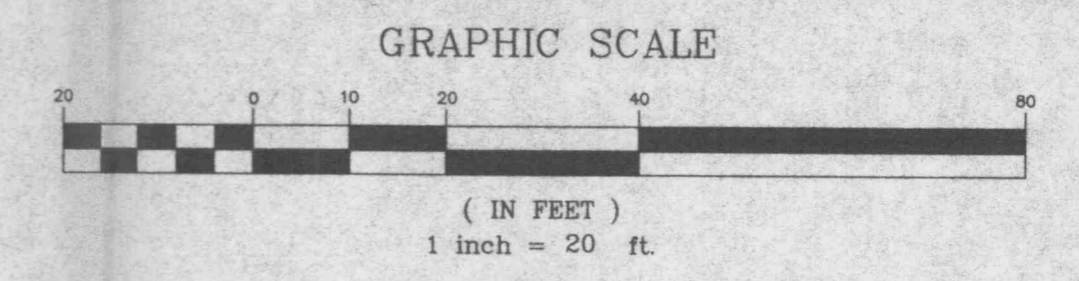


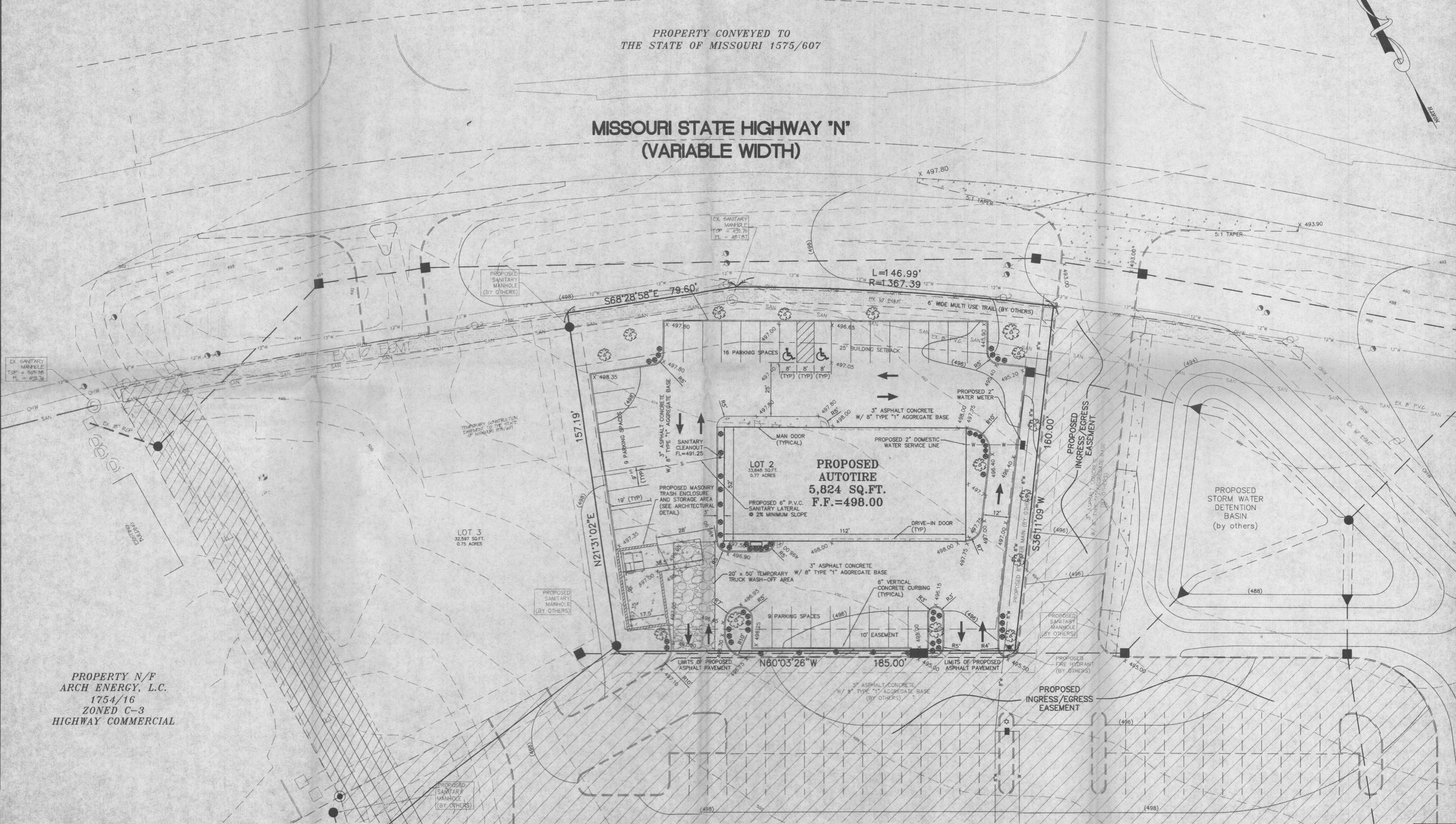
REVISIONS:
 7-17-2001 CITY COMMENTS
 8-22-2001 MISC. REVISIONS
 8-27-2001 CITY COMMENTS

A SITE/GRADING PLAN FOR
AUTOTIRE CAR CARE CENTER
 01-11336A 6-1-2001



PROPERTY CONVEYED TO
 THE STATE OF MISSOURI 1575/607

**MISSOURI STATE HIGHWAY 'N'
 (VARIABLE WIDTH)**



PROPERTY N/F
 ARCH ENERGY, L.C.
 1754/16
 ZONED C-3
 HIGHWAY COMMERCIAL

E:\DWG\A1.000PLUS\11336a AutoTire Car Care Center\Construct\11336a.dwg Mon Aug 27 11:28:42 2001 STATION 11 SCOTT L