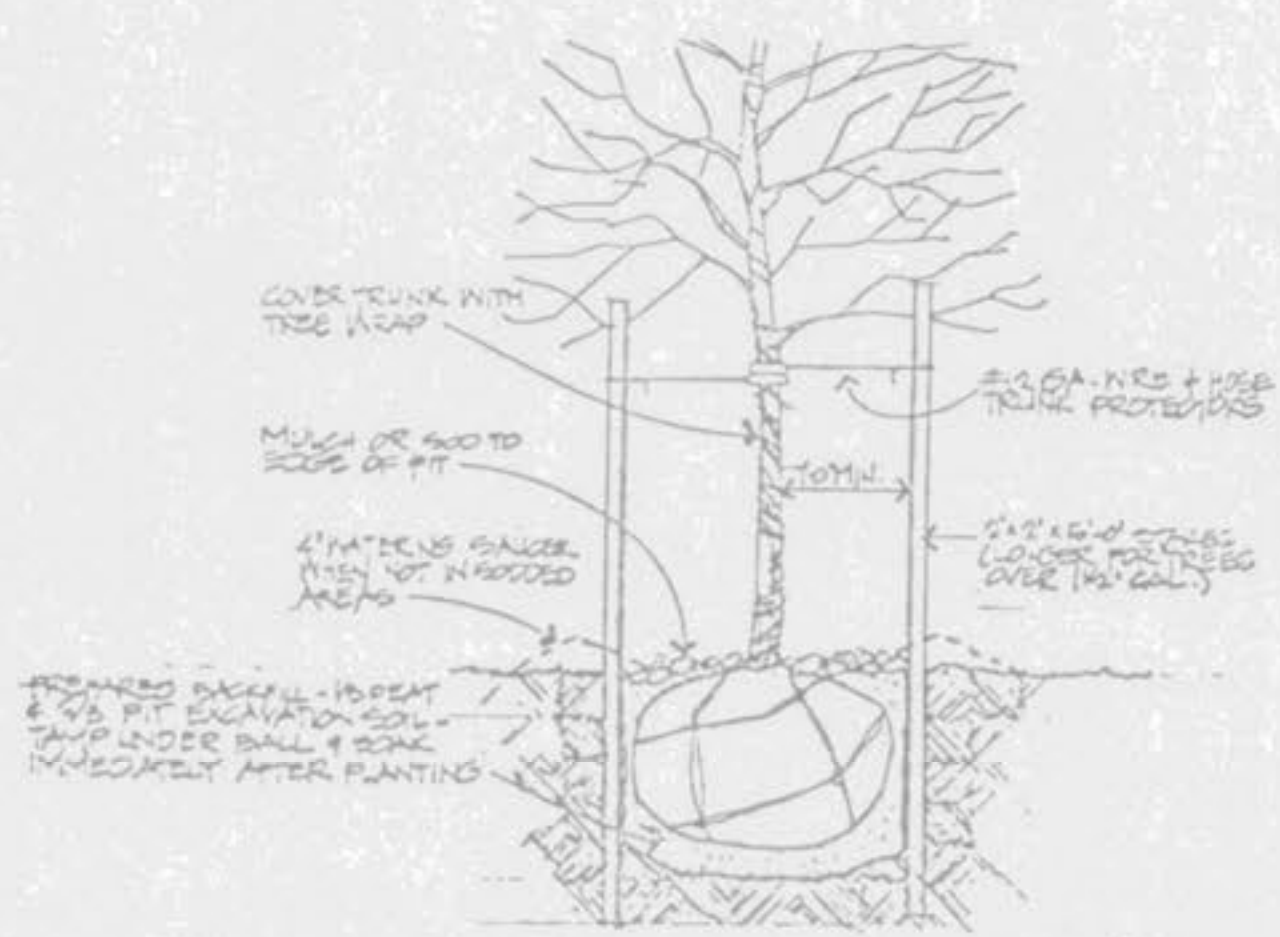
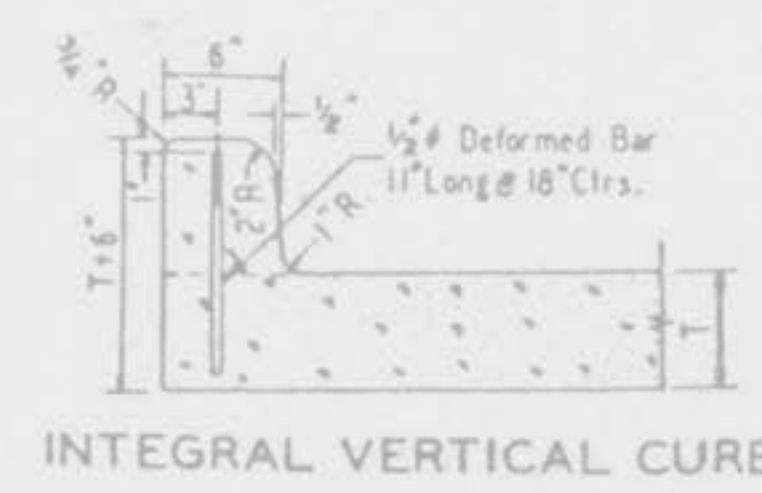
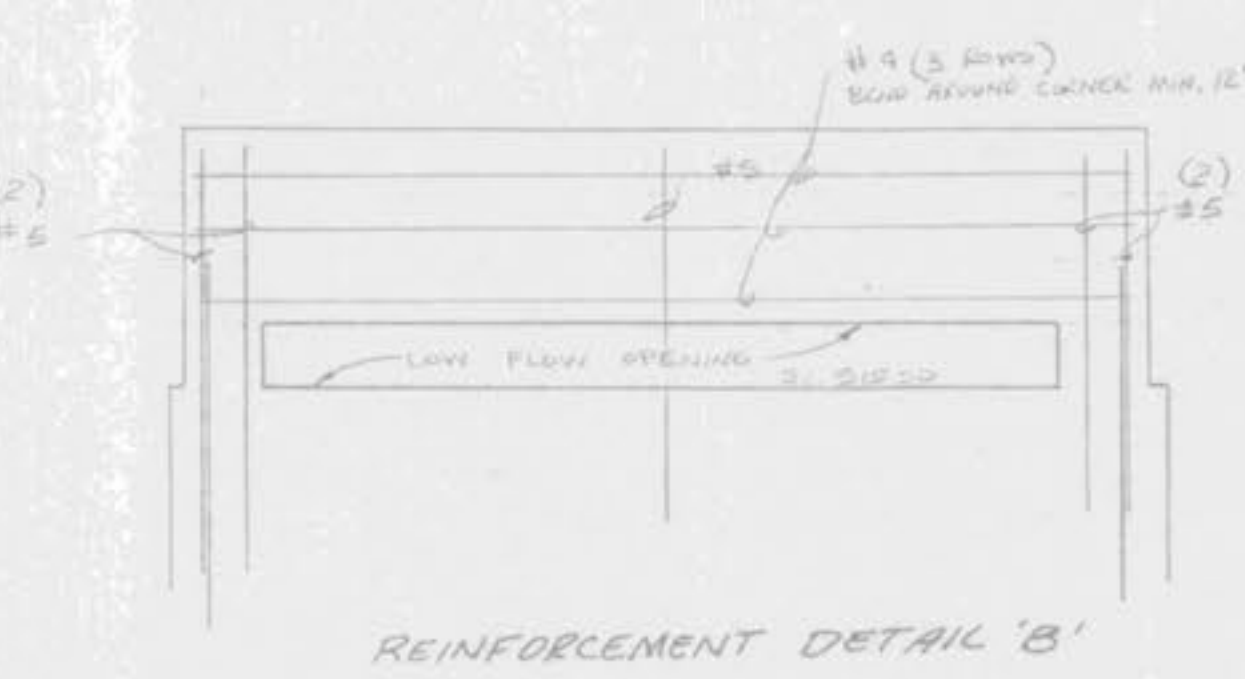
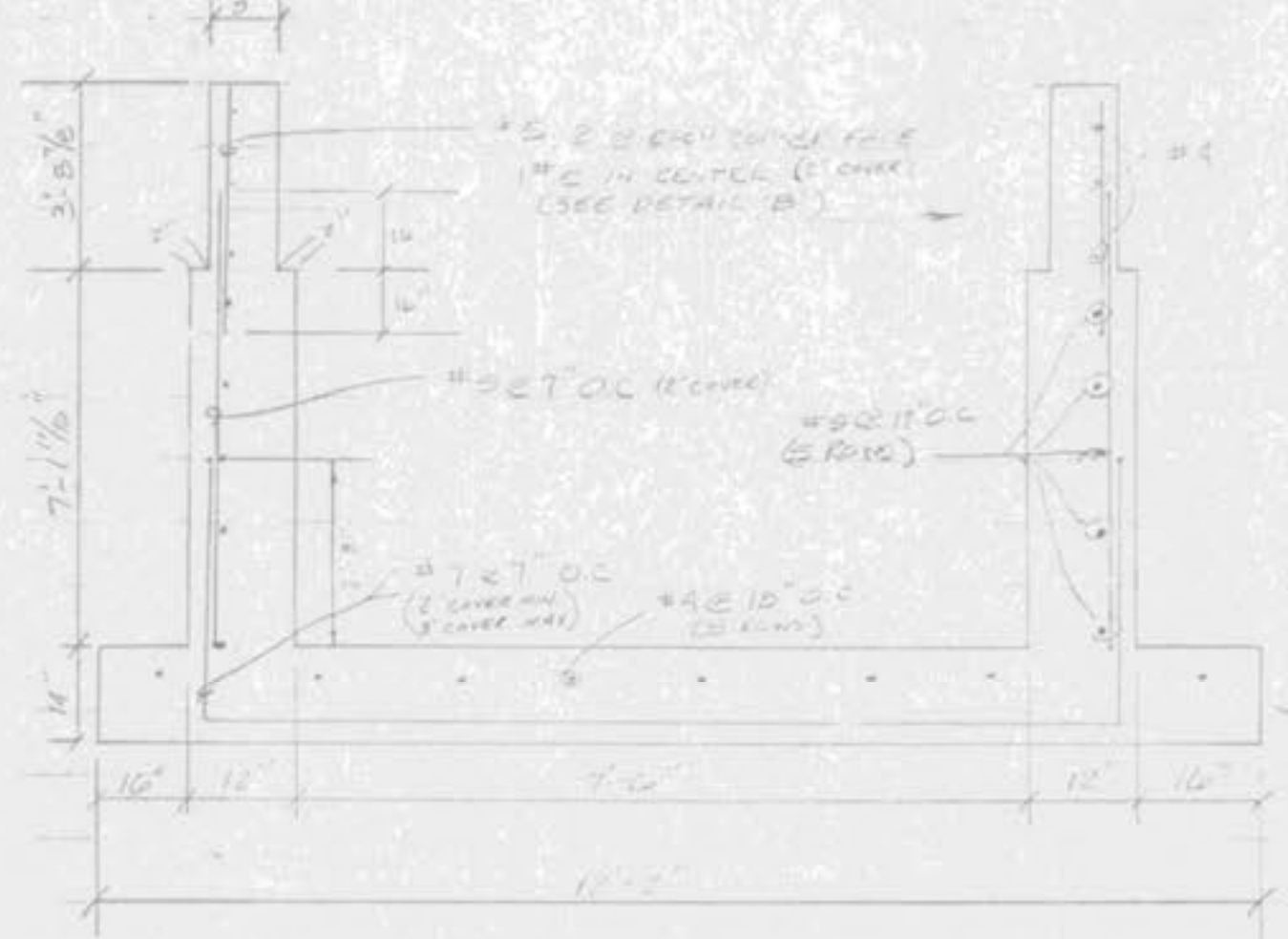


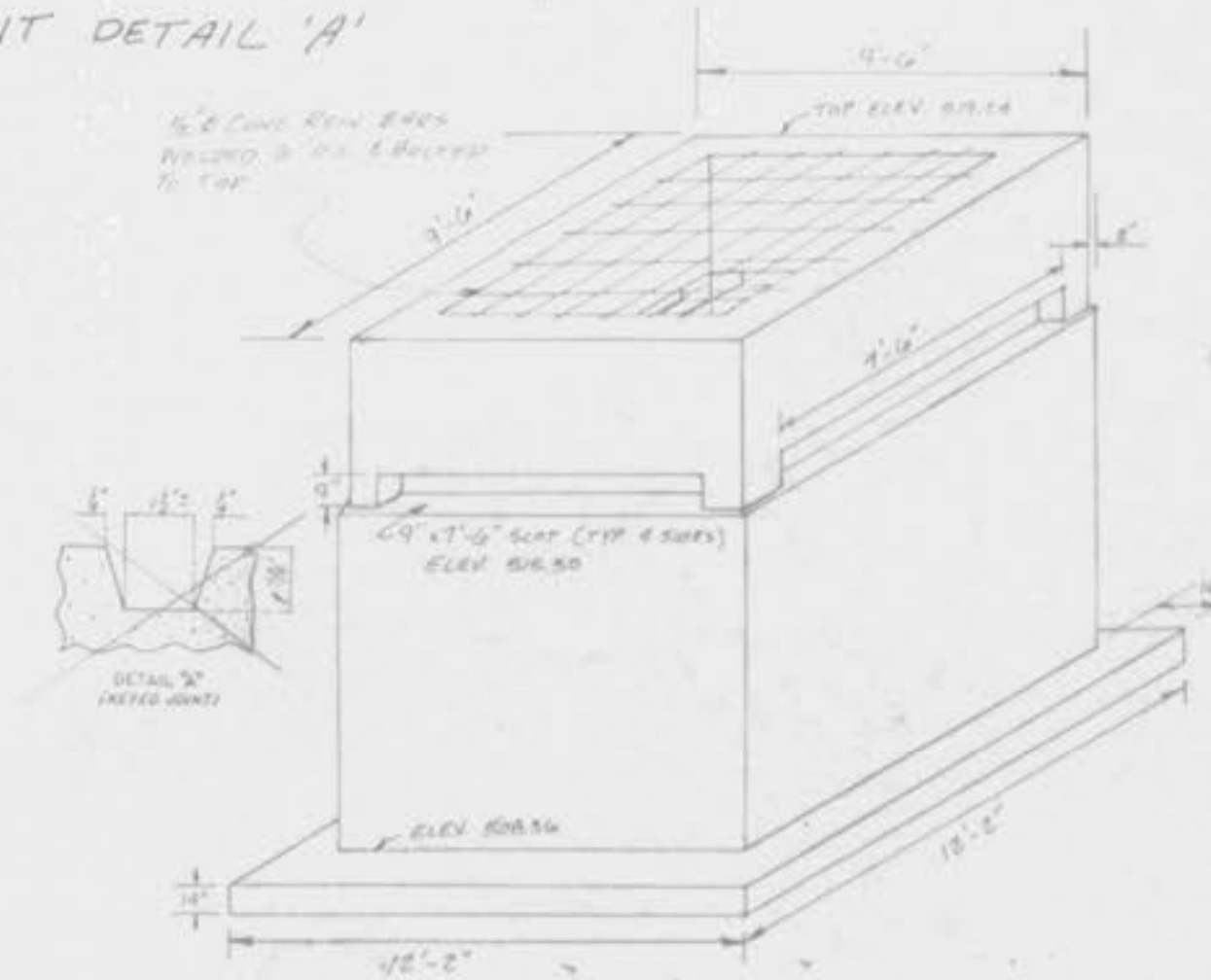
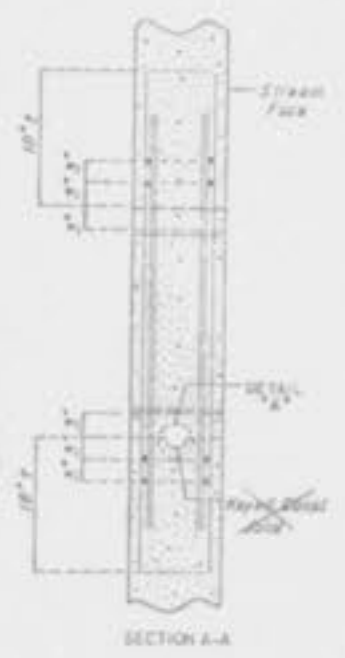
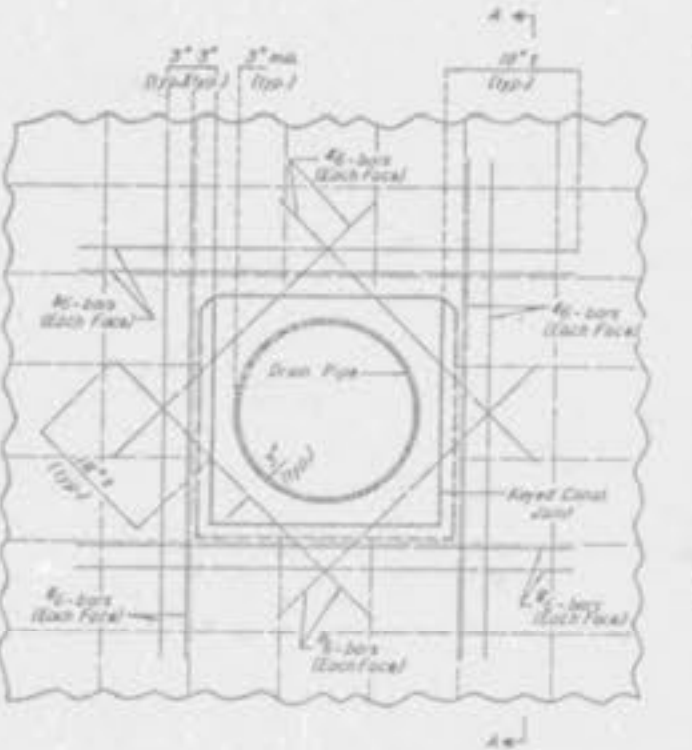
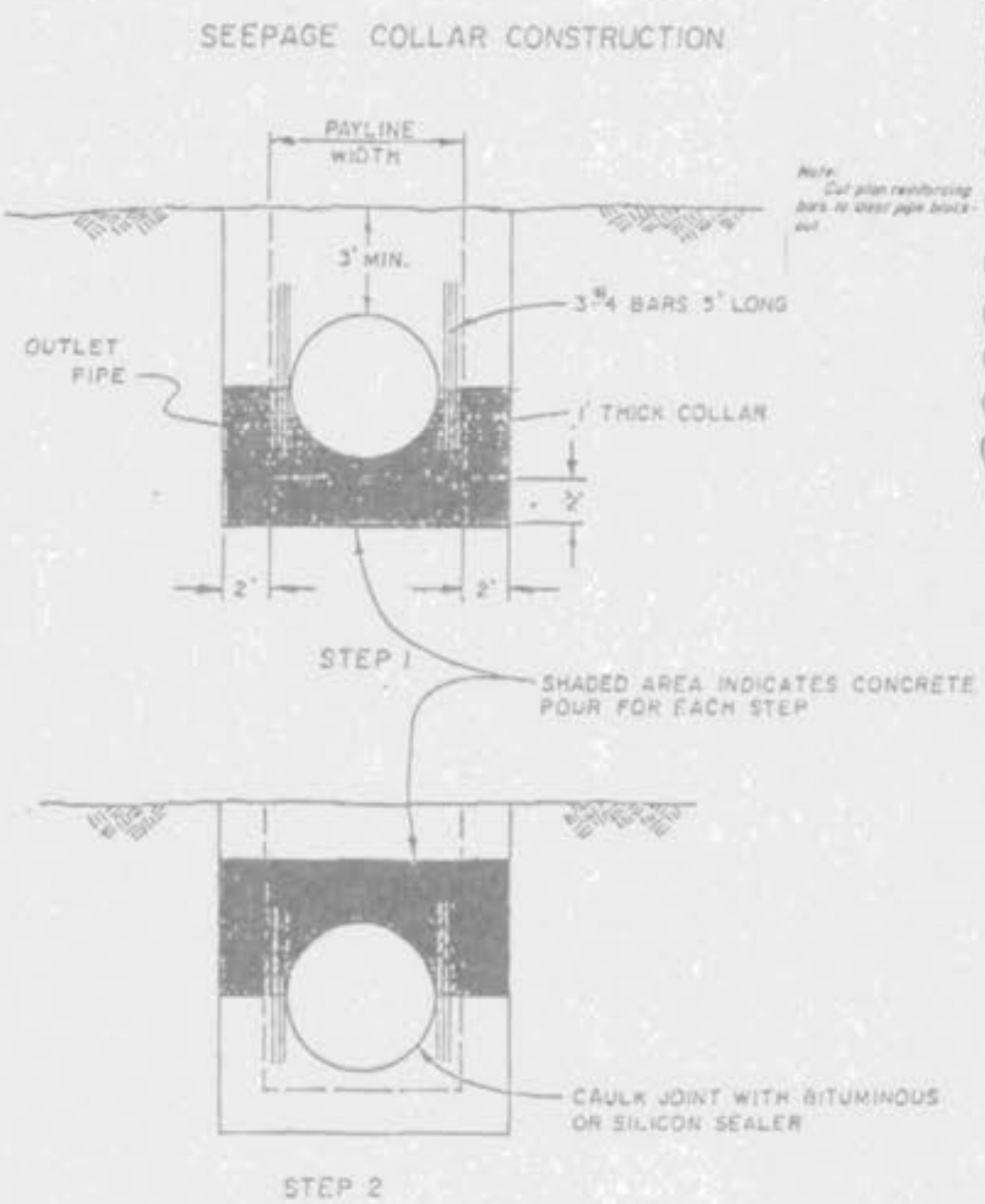
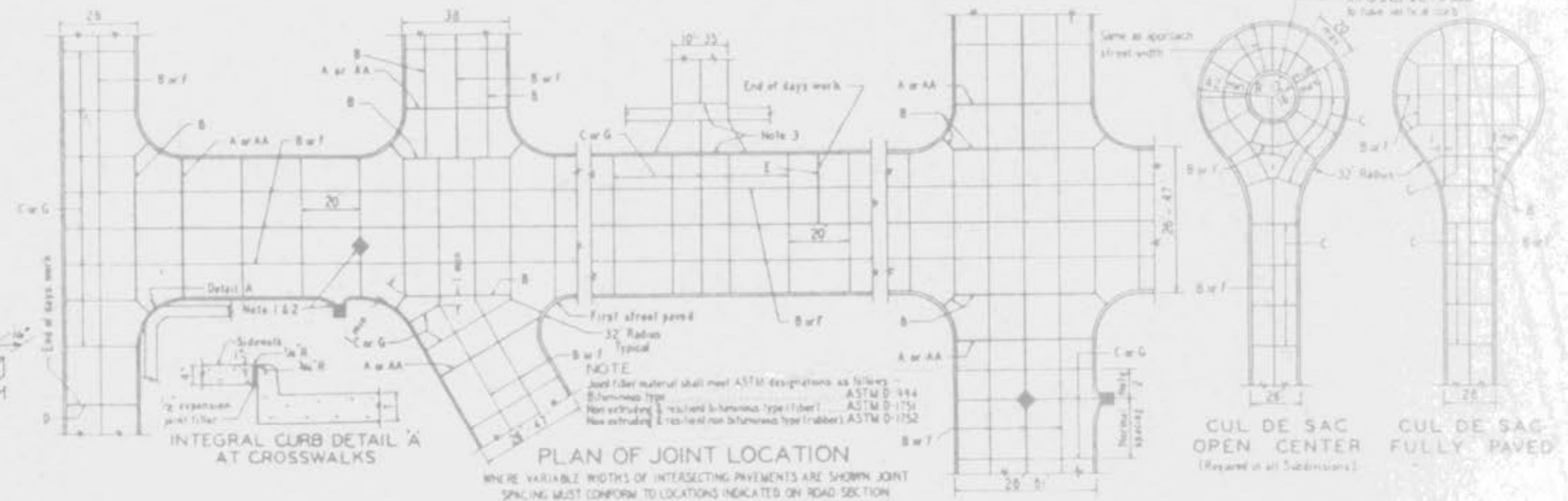
All Concrete  $f_c = 4000$  P.S.I.  
 All Reinf. - Grade 40 (S, G, Q, W, X, Y, Z)



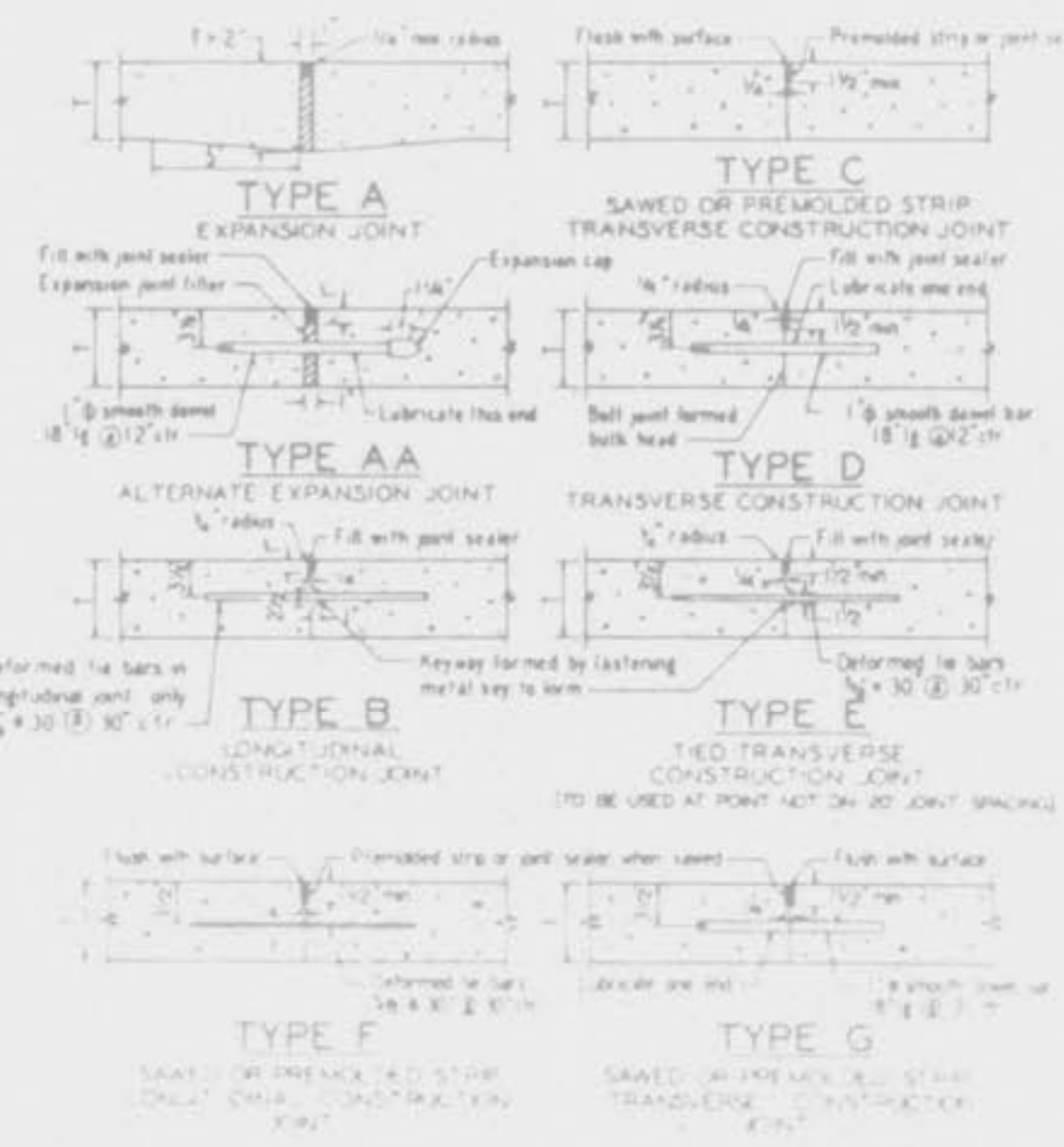
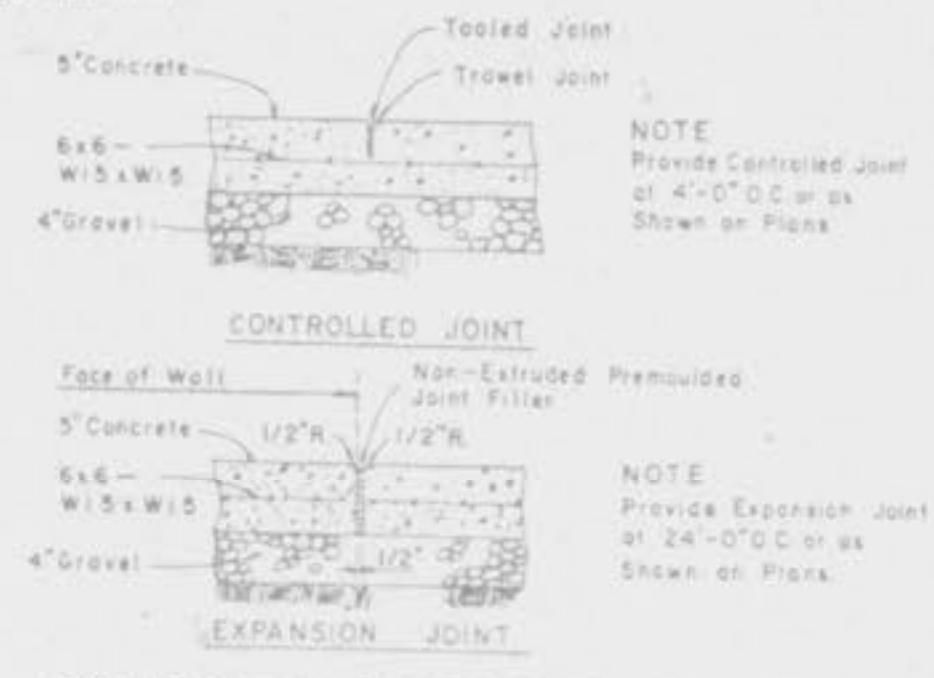
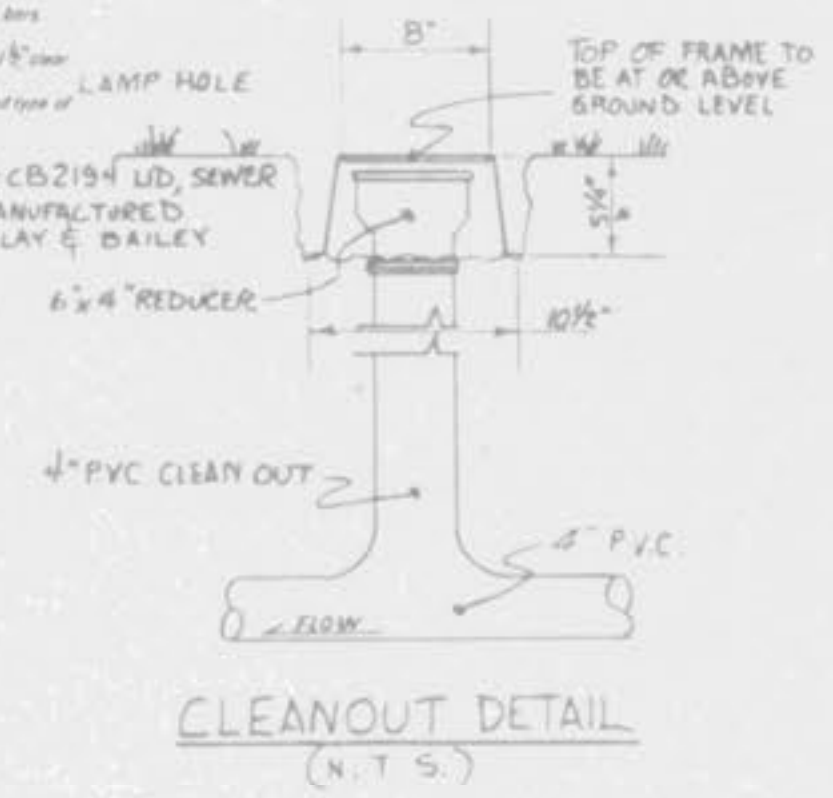
TREE PLANTING DETAIL  
 NO SCALE



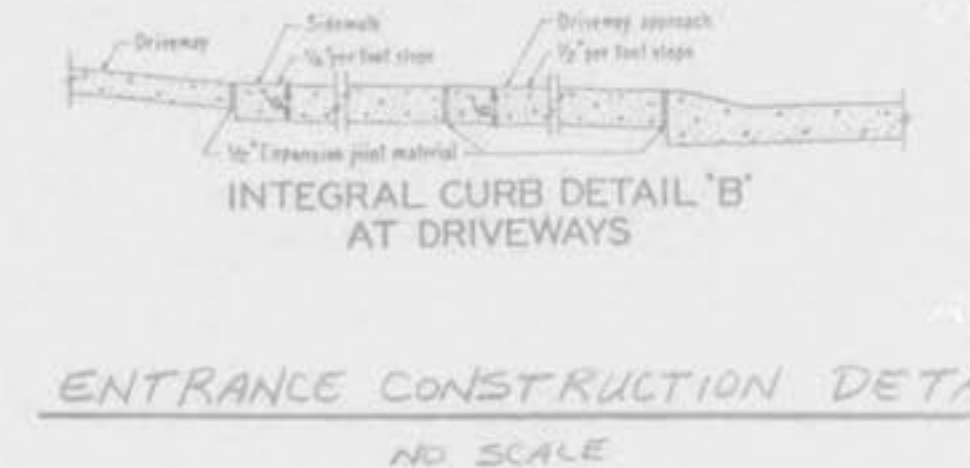
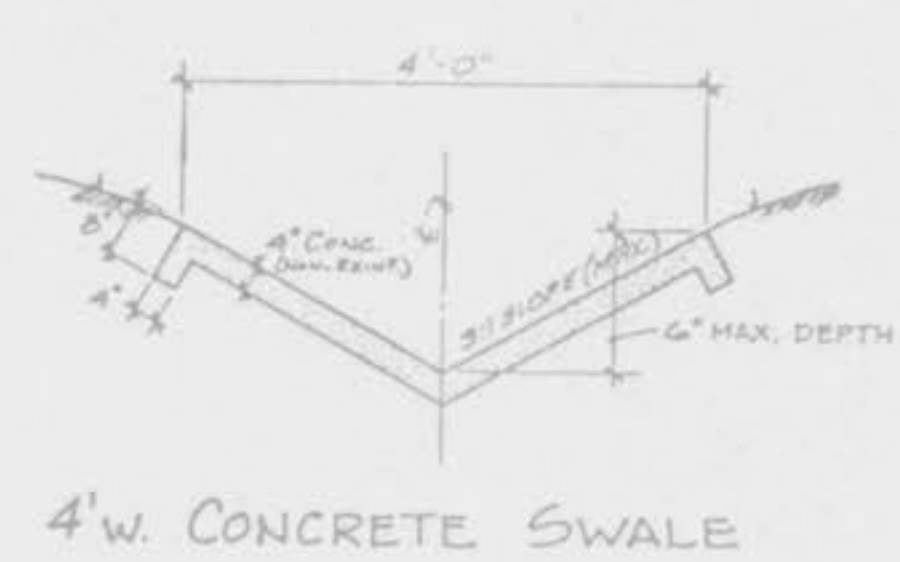
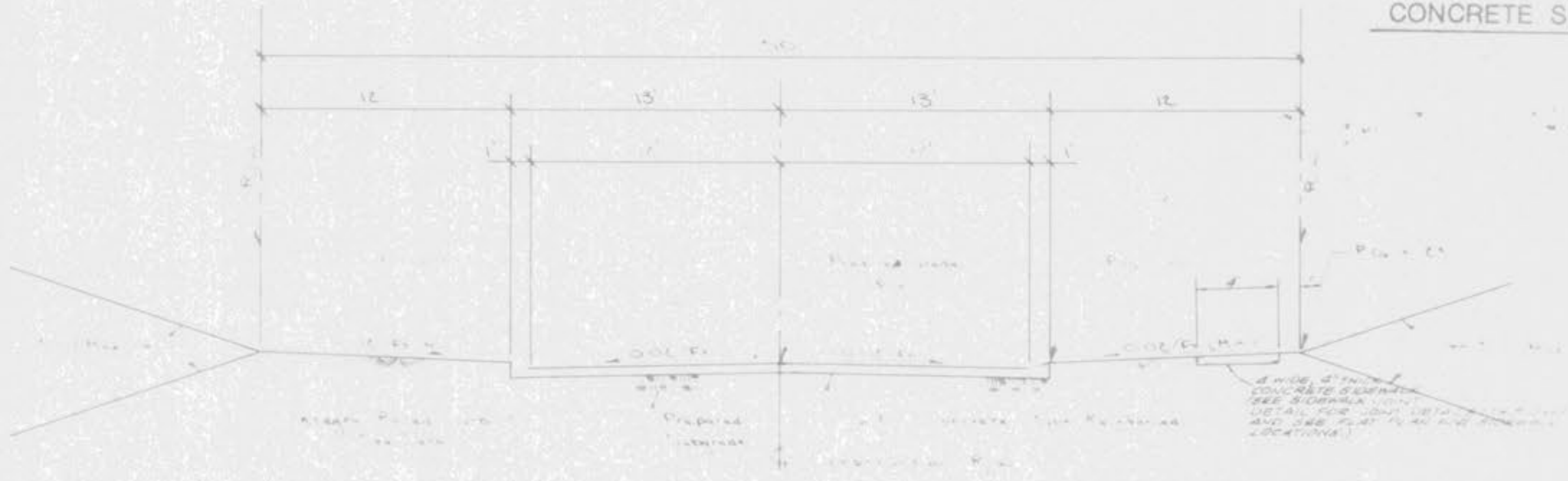
INTEGRAL CURB PAVEMENT TYPICAL SECTIONS AND DETAILS



NOTE: \* SEE DETAIL FOR REINFORCEMENT  
 \* CONCRETE  $f_c$  SHALL BE 4000 P.S.I. MIN.  
 \* REINFORCEMENT SHALL BE GRADE 40 MIN.



GENERAL NOTES:  
 1. ALL CURBS SHALL BE CONCRETE WITH A MINIMUM OF 4" THICKNESS AND SHALL BE REINFORCED WITH #4 BARS AT 12" ON CENTER. REINFORCEMENT SHALL BE GRADE 40. ALL CURBS SHALL BE FINISHED WITH A 1/2" THICK CURB FINISH. ALL CURBS SHALL BE FINISHED WITH A 1/2" THICK CURB FINISH.  
 2. ALL CURBS SHALL BE FINISHED WITH A 1/2" THICK CURB FINISH. ALL CURBS SHALL BE FINISHED WITH A 1/2" THICK CURB FINISH.  
 3. ALL CURBS SHALL BE FINISHED WITH A 1/2" THICK CURB FINISH. ALL CURBS SHALL BE FINISHED WITH A 1/2" THICK CURB FINISH.  
 4. ALL CURBS SHALL BE FINISHED WITH A 1/2" THICK CURB FINISH. ALL CURBS SHALL BE FINISHED WITH A 1/2" THICK CURB FINISH.  
 5. ALL CURBS SHALL BE FINISHED WITH A 1/2" THICK CURB FINISH. ALL CURBS SHALL BE FINISHED WITH A 1/2" THICK CURB FINISH.  
 6. ALL CURBS SHALL BE FINISHED WITH A 1/2" THICK CURB FINISH. ALL CURBS SHALL BE FINISHED WITH A 1/2" THICK CURB FINISH.  
 7. ALL CURBS SHALL BE FINISHED WITH A 1/2" THICK CURB FINISH. ALL CURBS SHALL BE FINISHED WITH A 1/2" THICK CURB FINISH.  
 8. ALL CURBS SHALL BE FINISHED WITH A 1/2" THICK CURB FINISH. ALL CURBS SHALL BE FINISHED WITH A 1/2" THICK CURB FINISH.  
 9. ALL CURBS SHALL BE FINISHED WITH A 1/2" THICK CURB FINISH. ALL CURBS SHALL BE FINISHED WITH A 1/2" THICK CURB FINISH.  
 10. ALL CURBS SHALL BE FINISHED WITH A 1/2" THICK CURB FINISH. ALL CURBS SHALL BE FINISHED WITH A 1/2" THICK CURB FINISH.



AUTUMN CHASE  
 16