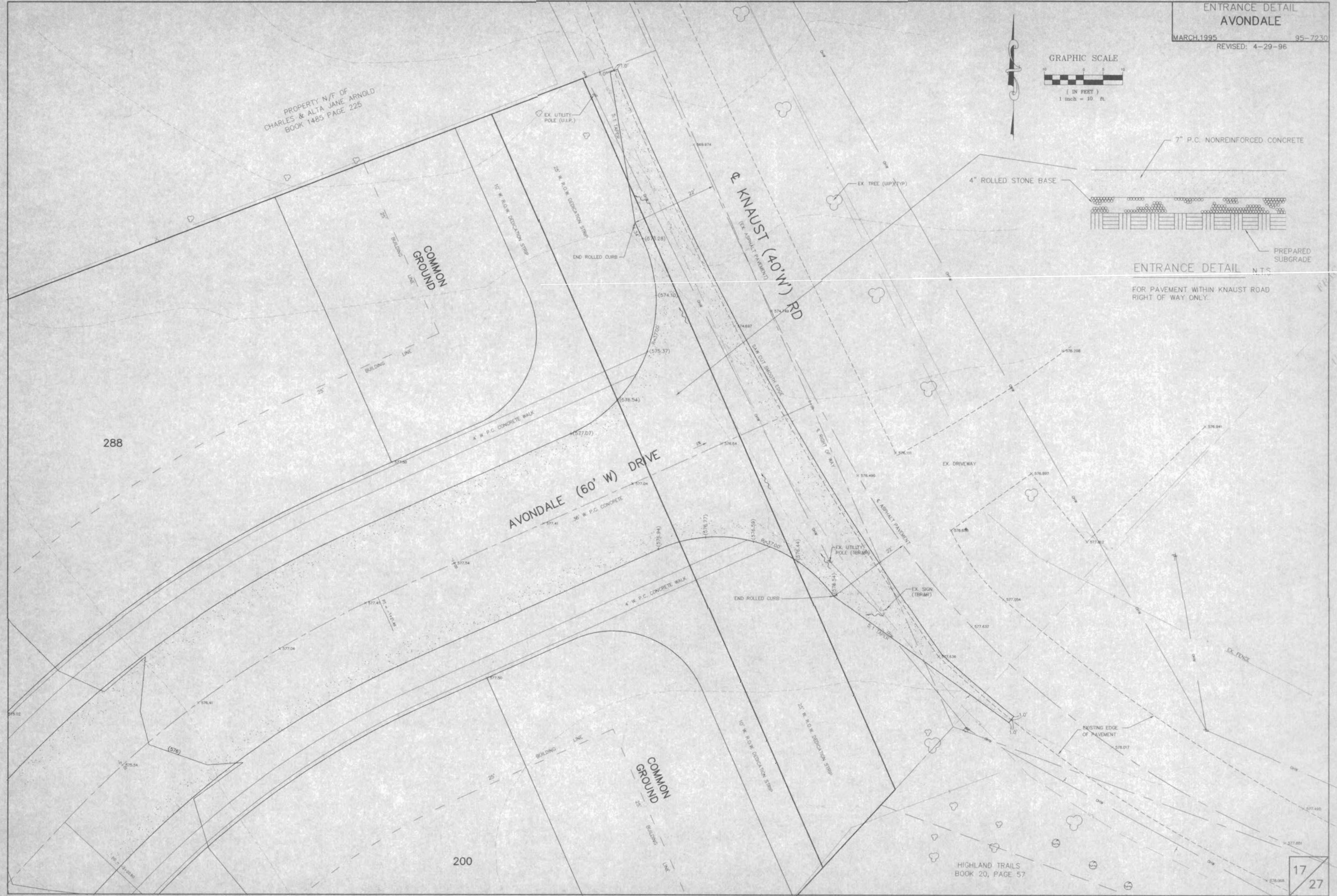
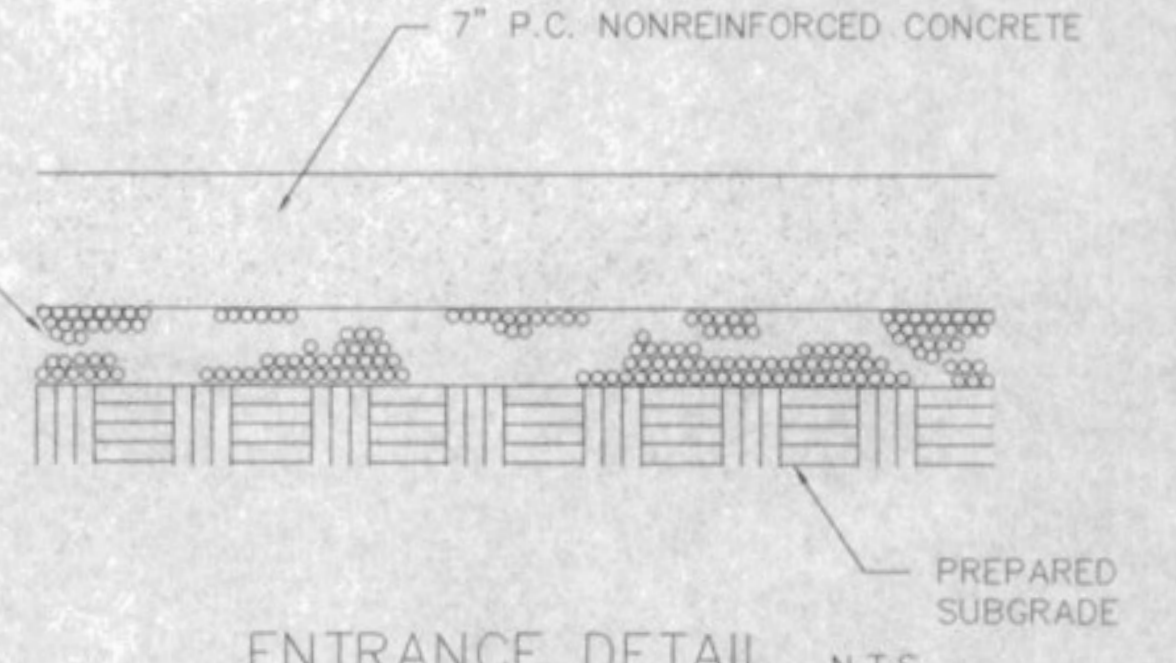
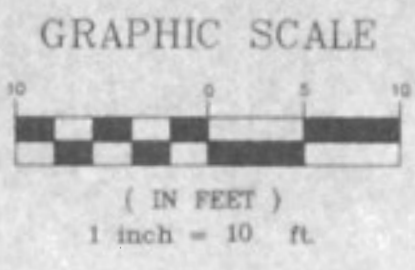


ENTRANCE DETAIL
AVONDALE

MARCH 1995 95-7230
REVISED: 4-29-96



PROPERTY N/F OF
CHARLES & ALTA JANE ARNOLD
BOOK 1485 PAGE 225

COMMON
GROUND

COMMON
GROUND

288

200

HIGHLAND TRAILS
BOOK 20, PAGE 57

17
27