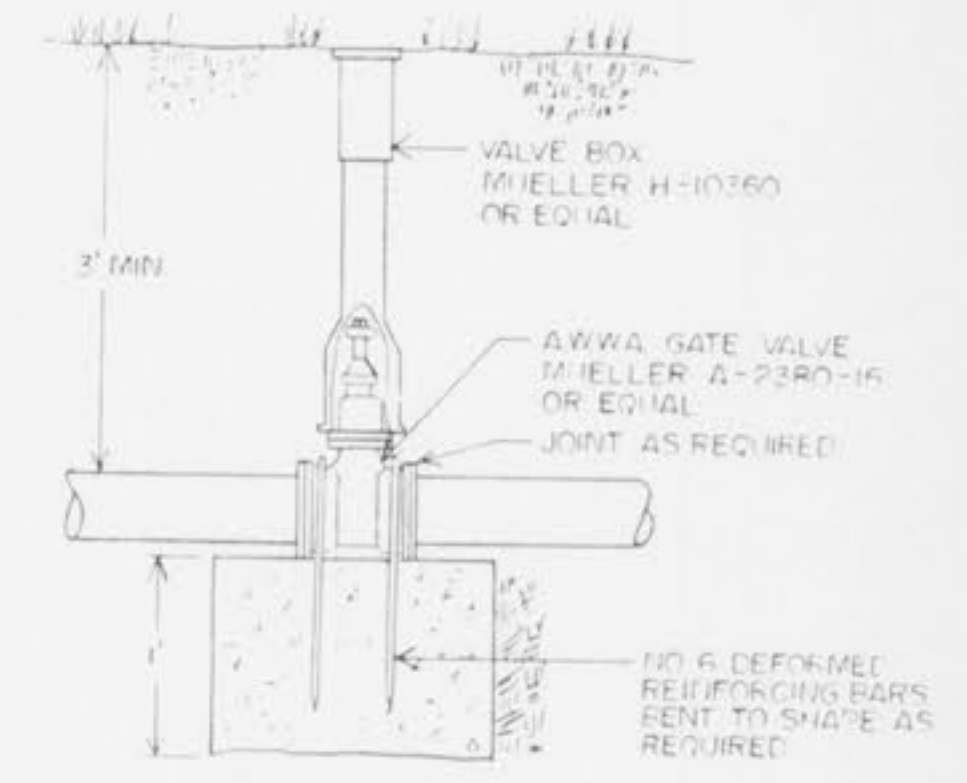
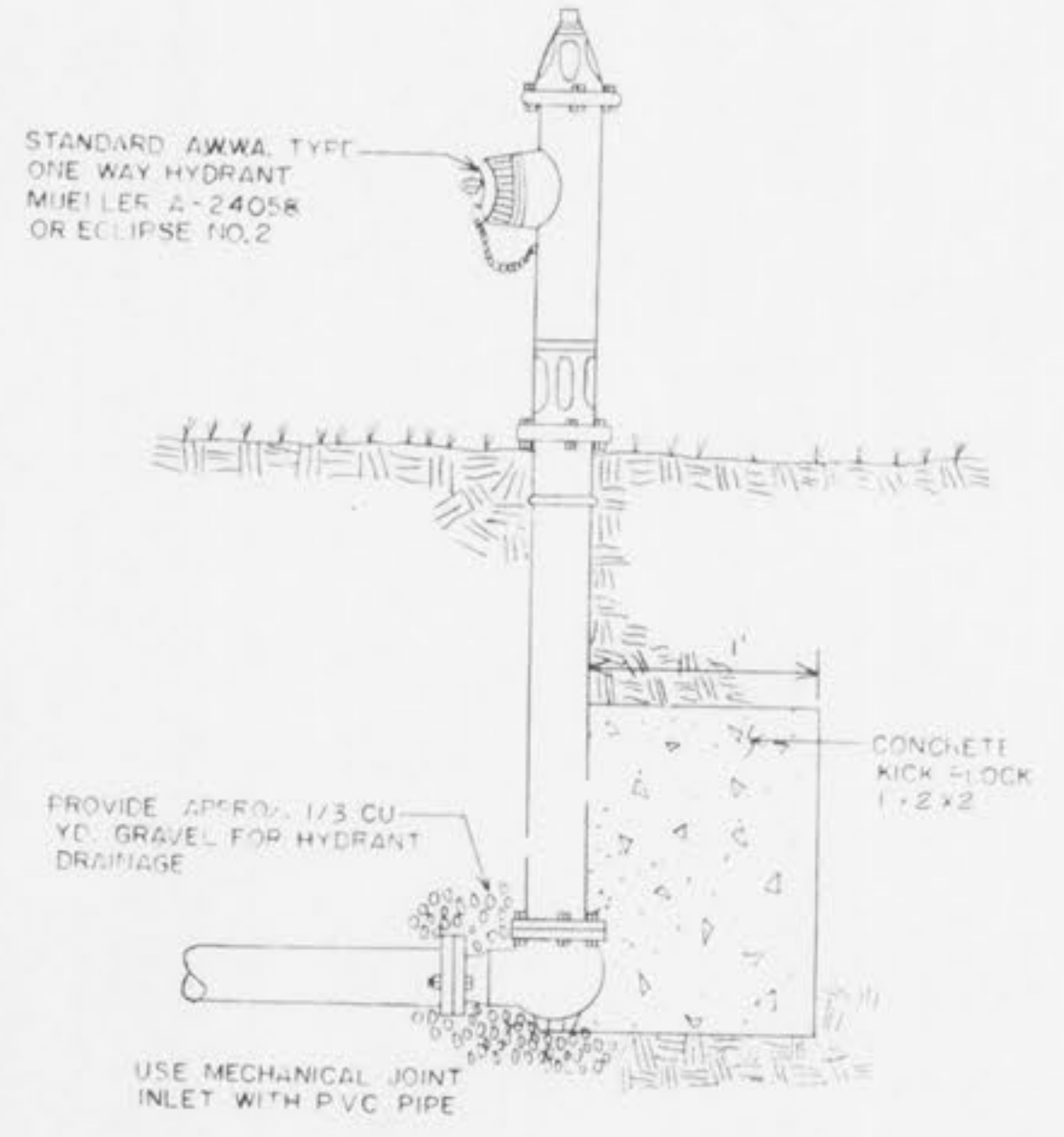


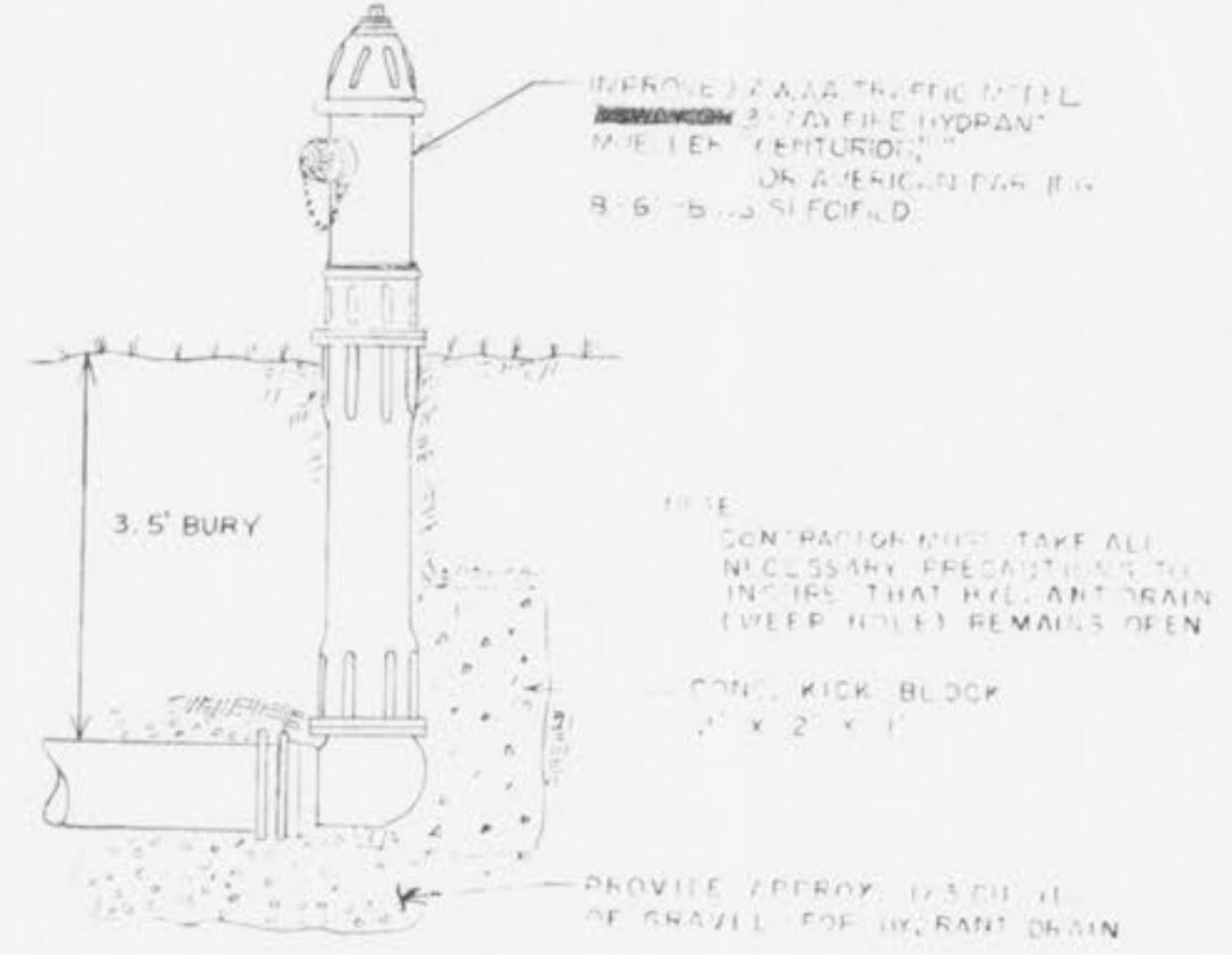
TYPICAL WATER MAIN INSTALLATION DETAILS
NO SCALE



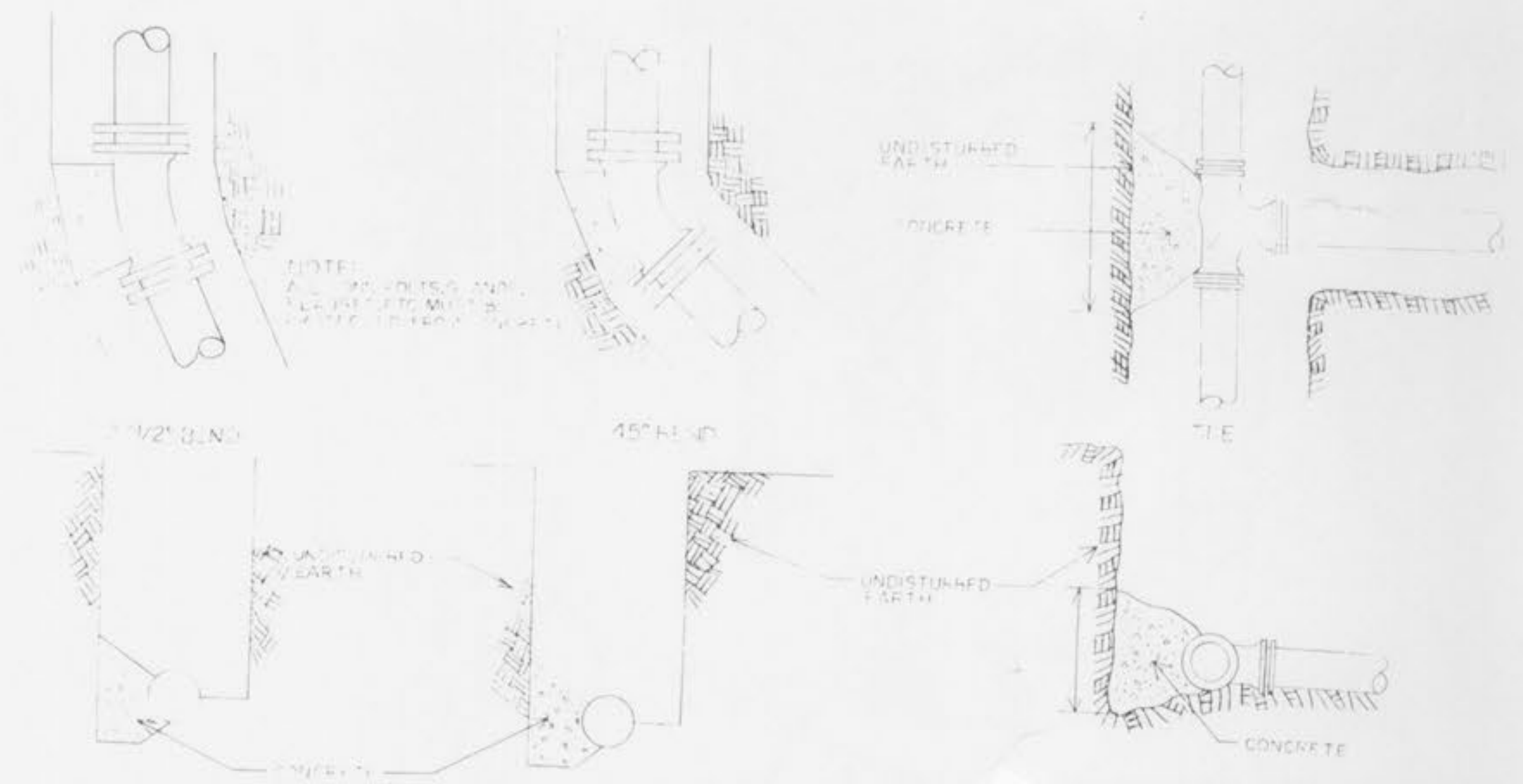
GATE VALVE W / THRUST BLOCK DETAIL
NO SCALE



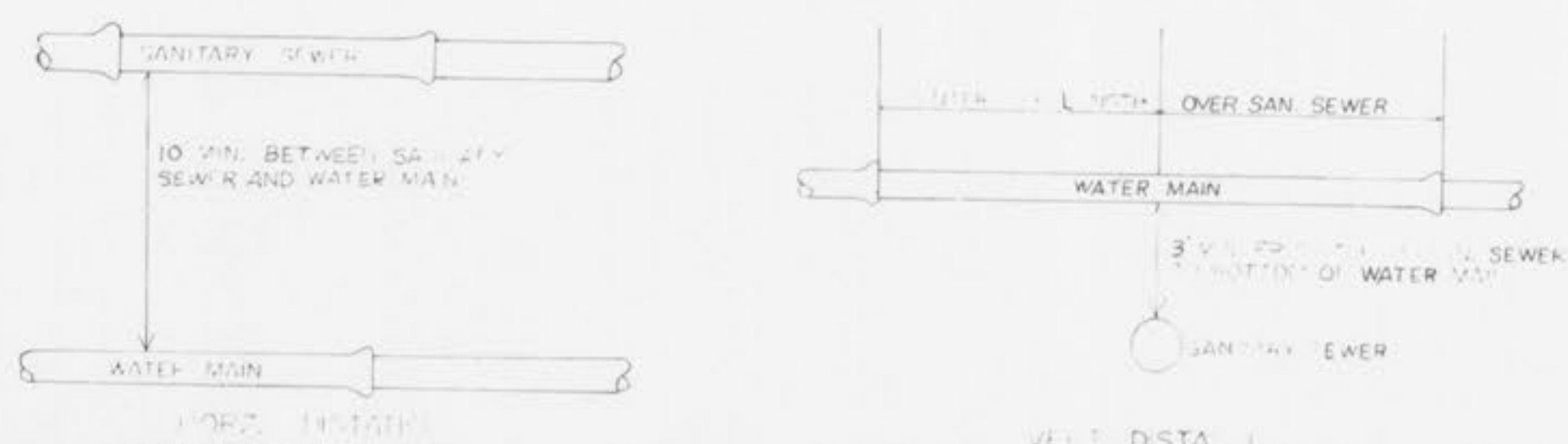
FLUSHING HYDRANT
NO SCALE



FIRE HYDRANT INSTALLATION DETAIL
NO SCALE



TYPICAL THRUST BLOCK DETAIL
NO SCALE



TYPICAL WATER & SEWER SEPARATION
NO SCALE

WATER MAIN SIZE (D.I.D.)	MIN THRUST BLOCK BEARING DIMENSIONS TO BEAR AGAINST UNDISTURBED EARTH				
	45° BEND	22 1/2° BEND	TIE	VALVE	CROSS
2"	1.5' x 1'	1.5' x 1'	1.5' x 1'	1.5' x 1'	1.5' x 1'
4"	1.5' x 1'	1' x 1'	2' x 1'	2' x 1'	1.5' x 1'
6"	1.5' x 1'	1' x 1'	2' x 1'	2' x 1'	1' x 1'
8"	2' x 1'	1' x 1'	2' x 2.5'	2' x 2'	1' x 1.5'
10"	2' x 2.5'	1.5' x 2'	2' x 3.5'	2' x 2'	2' x 2'
12"	2' x 3.5'	1.5' x 2.5'	3' x 3.5'	3' x 2'	2' x 2'
16"	3' x 4'	2' x 3'	4' x 4.5'	3' x 4.5'	3' x 3.5'

ST. CHARLES COUNTY
PUBLIC WATER SUPPLY DISTRICT
NO. 2

Approved from Drawing by: COCHRAN ENGINEERING COMPANY, WASHINGTON, D.C.

APPROVED:

TYPICAL WATER INSTALLATION DETAILS

DATE: FEB. 98 SCALE: 1" = 1'-0" SHEET NO. 23 DIVISION: