

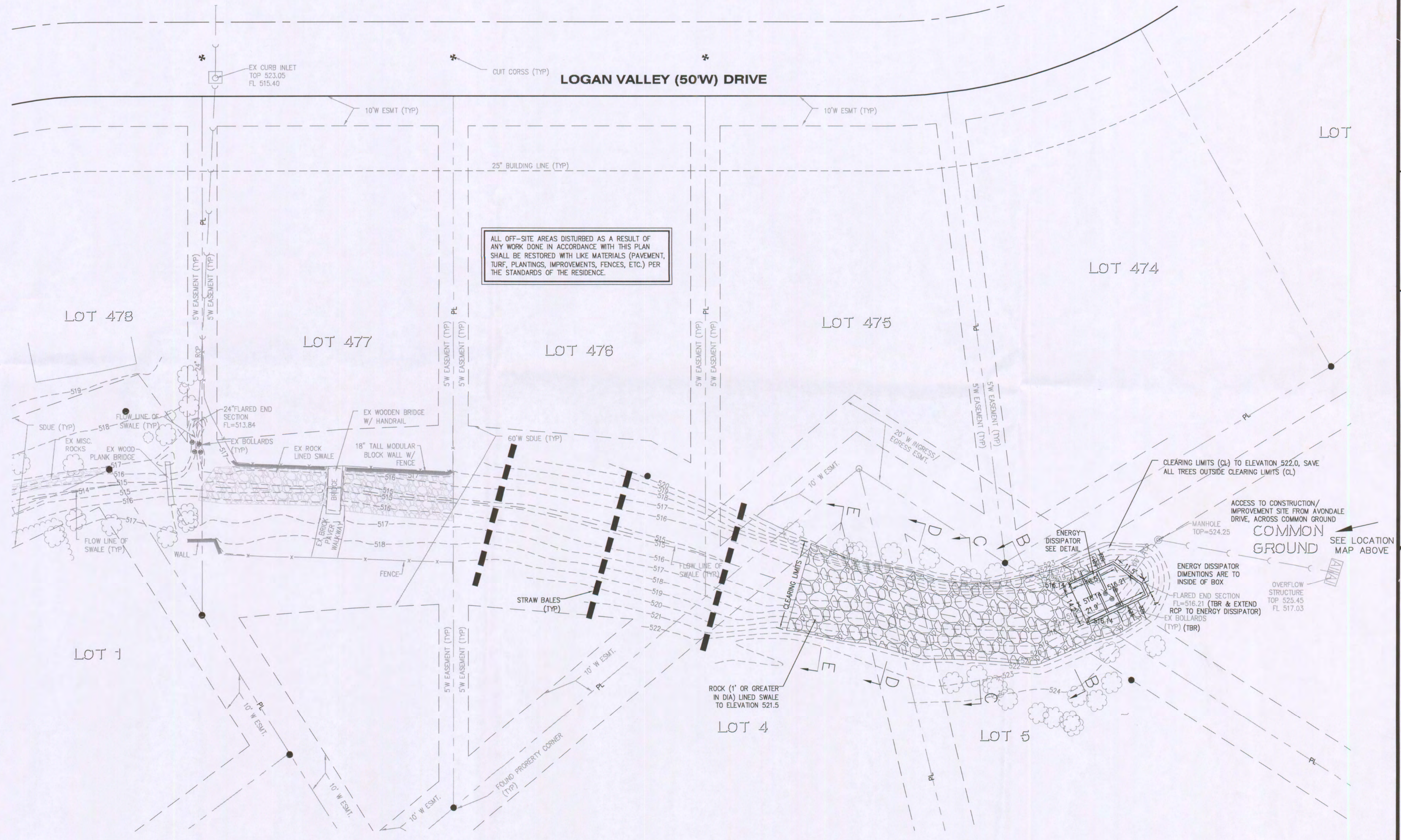
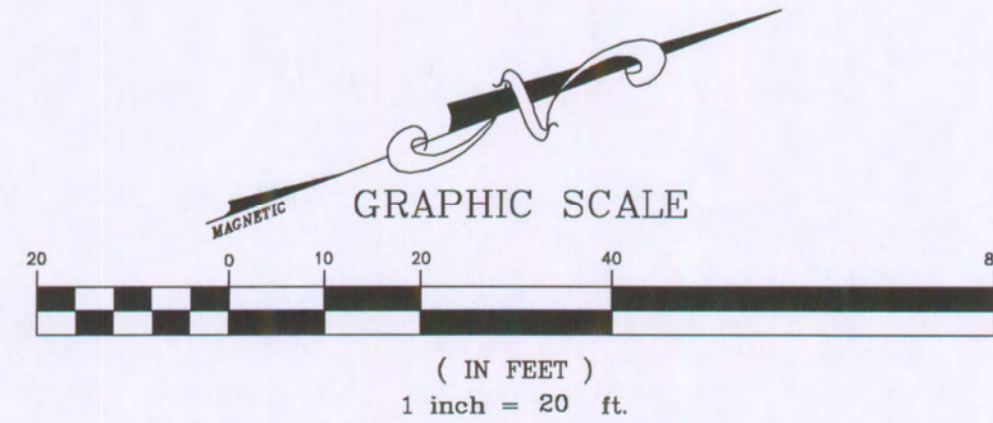
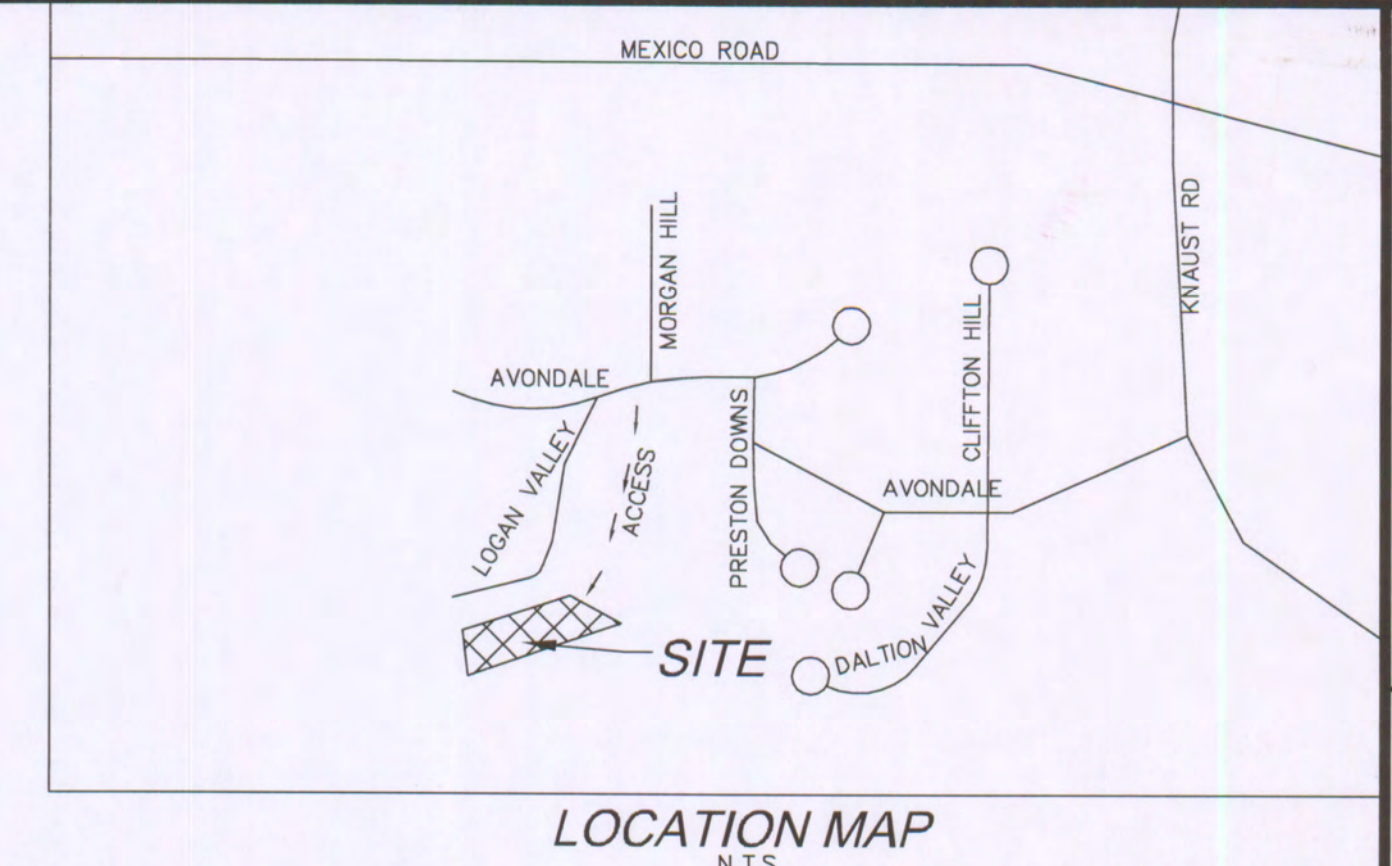
# AVONDALE HEIGHTS

## SWALE STABILIZATION PLAN

A TRACT OF LAND BEING PART OF FRACTIONAL SECTION 9, TOWNSHIP 46 N,  
RANGE 3 E, CITY OF O'FALLON, ST. CHARLES COUNTY, MISSOURI

### LEGEND

	EXISTING	PROPOSED
TREE LINE		
CONTOURS		
SANITARY SEWERS		
STORM SEWERS		
RIGHT-OF-WAY		
PROPERTY LINE		
EASEMENT		
SPOT ELEVATION		
CENTER LINE		
GAS MAIN		
WATER MAIN		
UNDERGROUND TELEPHONE		
FENCE		
SILTATION CONTROL		
RETAINING WALL		
FIRE HYDRANT		
POWER POLE		
CURB INLET		
FLARED END SECTION		
AREA INLET		
STREET SIGN LOCATION		
CLEANOUT		
TO BE REMOVED		(T.B.R.)
TO BE REMOVED & RELOCATED		(T.B.R. & R.)
TO BE ABANDONED & FILLED		(T.B.A. & F.)
TO BE USED IN PLACE		(U.I.P.)
STORM DRAIN UTILITY EASEMENT		(SDUE)



ALL OFF-SITE AREAS DISTURBED AS A RESULT OF ANY WORK DONE IN ACCORDANCE WITH THIS PLAN SHALL BE RESTORED WITH LIKE MATERIALS (PAVEMENT, TURF, PLANTINGS, IMPROVEMENTS, FENCES, ETC.) PER THE STANDARDS OF THE RESIDENCE.

### CONSTRUCTION NOTES

- CONCRETE FOR THE STRUCTURE SHALL BE "AIR ENTERAINED" AND CONTAIN AT LEAST 6 SACK CLASS "A" AEA PORTLAND CEMENT PER CUBIC YARD. THE CONCRETE SHALL BE PLACED AT A SLUMP OF 5" +/- 1". THE CONCRETE SHALL BE PROPORTIONED AND TRANSPORTED IN ACCORDANCE WITH ASTM C-94.
- REINFORCED STEEL SHALL CONFORM TO ASTM C615-40 WITH DEFORMATIONS CONFORMING TO ASTM A-305 AND SHALL HAVE A MIN COVER OF 2" EXCEPT FOR 3" WHERE CONCRETE IS POURED AGAINST EARTH.
- LAPS AND/OR SPLICES IN REINFORCING STEEL SHALL BE A MIN OF 30 BAR DIA.
- KEYED JOINTS ARE TO BE 2" X 2" KEYED CONSTRUCTION JOINTS.
- f<sub>s</sub> = 24,000 PSI
- f<sub>c</sub> = 3,750 PSI
- 2" CLEAR (TYPE) TO CLOSEST REBAR TO CONCRETE SURFACE.
- ALL EXPOSED EDGES TO HAVE A 3/4" CHAMFER
- CONTRACTOR TO PROVIDE FOR CHANNEL FLOW DURING CONSTRUCTION OF STRUCTURE.

### BENCHMARK

ADOPTED BENCHMARK MSD #2738 ELEV. 7.43 (CITY DATUM) 421.12' (NGVD'29)  
"TRIANGLE" ON THE NORTHEAST CORNER OF A STONE FOUNDATION TO A FOUR-STORY BRICK BUILDING; SOUTHWEST CORNER OF 1ST AND GRATIOT AVENUE.

### FLOOD MAP REFERENCE

PER FLOOD INSURANCE MAP (FIRM) NUMBER 29183C0243E WITH AN EFFECTIVE DATE OF AUGUST 2, 1998, NO FLOOD PLANE EXISTS ON THIS SITE.

### UTILITY INFORMATION:

UTILITIES SHOWN HAVE BEEN TAKEN FROM AVAILABLE SURVEYS, UTILITY COMPANY MAPS AND PHYSICAL PROPERTY INSPECTION. THE LOCATIONS AND FACILITIES SHALL BE CONSIDERED APPROXIMATE ONLY. THERE MAY BE ADDITIONAL UTILITIES THAT HAVE NOT BEEN SHOWN ON THIS SURVEY. THE CONTRACTOR WILL BE RESPONSIBLE FOR THE LOCATIONS OF ALL UTILITIES PRIOR TO EXCAVATION OR CONSTRUCTION.



1-800-DIG-RITE

CALL 1-800-DIG-RITE (MISSOURI ONE CALL) TO HAVE LOCATIONS MARKED IN THE FIELD (SUBSCRIBING UTILITIES REQUIRE 48 HOURS NOTICE PRIOR TO CONSTRUCTION)

MoDOT IS NOT PART OF DIG RITE. PLEASE CALL MoDOT CUSTOMER SERVICE 48 HOURS BEFORE DIGGING: (314)340-4100

Approvals  
  
  
  
 10-24-07  
  
 10/26/07

REVISIONS PREP. DATE DATE	PREPARED FOR: GLENN E BORGARD, P.E. 1828 STENTON PATH CHESTERFIELD, MO 63005 (314) 532-0002 JOB #0183
SEAL: AVONDALE HEIGHTS SWALE STABILIZATION O'FALLON, MISSOURI SITE PLAN	THE PROFESSIONAL WHOSE SIGNATURE AND PERSONAL SEAL APPEAR HEREON ASSUMES RESPONSIBILITY FOR THE ACCURACY OF THE INFORMATION AND DATA SHOWN ON THIS PLAN AND FOR THE COMPLETION OF THE PROJECT IN ACCORDANCE WITH THE SPECIFICATIONS, ESTIMATES, PREPARED BY HIMSELF OR UNDER HIS SUPERVISION AND FOR THE INFORMATION OF THE UNDERSIGNED PROFESSIONAL RELATING TO, OR INTENDED TO BE USED FOR, ANY PART OR PARTS OF THE PROJECT TO WHICH THIS PAGE REFERS.
planning • engineering • surveying • landscape architecture <b>Cole</b> and ASSOCIATES INCORPORATED 10777 sunset office dr. suite 10 saint louis, missouri 63127 p: 314 984 9887 f: 314 984 0587	DESIGNED BY: JB DRAWN BY: JB CHECKED BY: MGB/GEB DATE: 10/17/2007 SCALE: 1"=20' Job Number: 07-196 Sheet Number: C1.0