

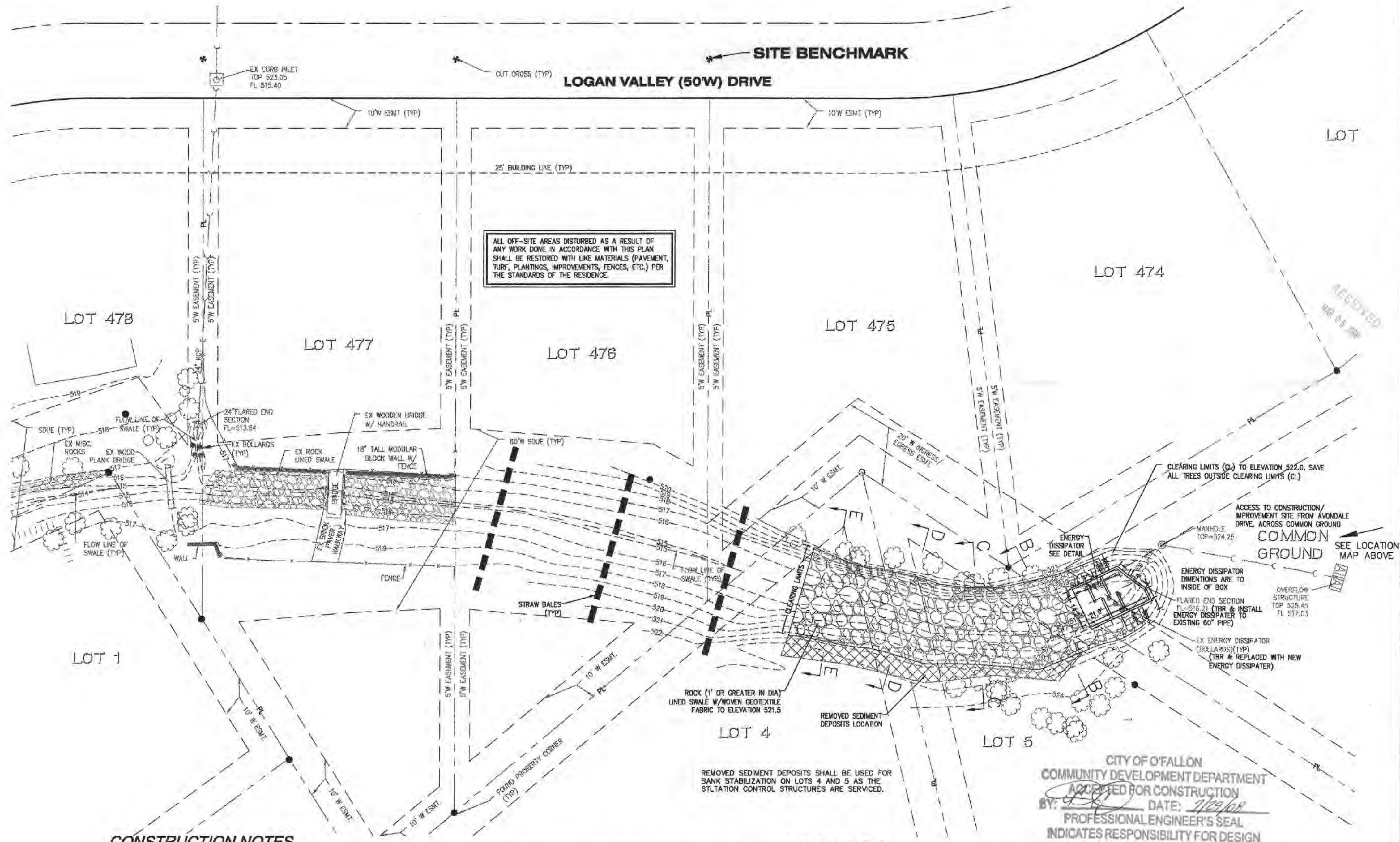
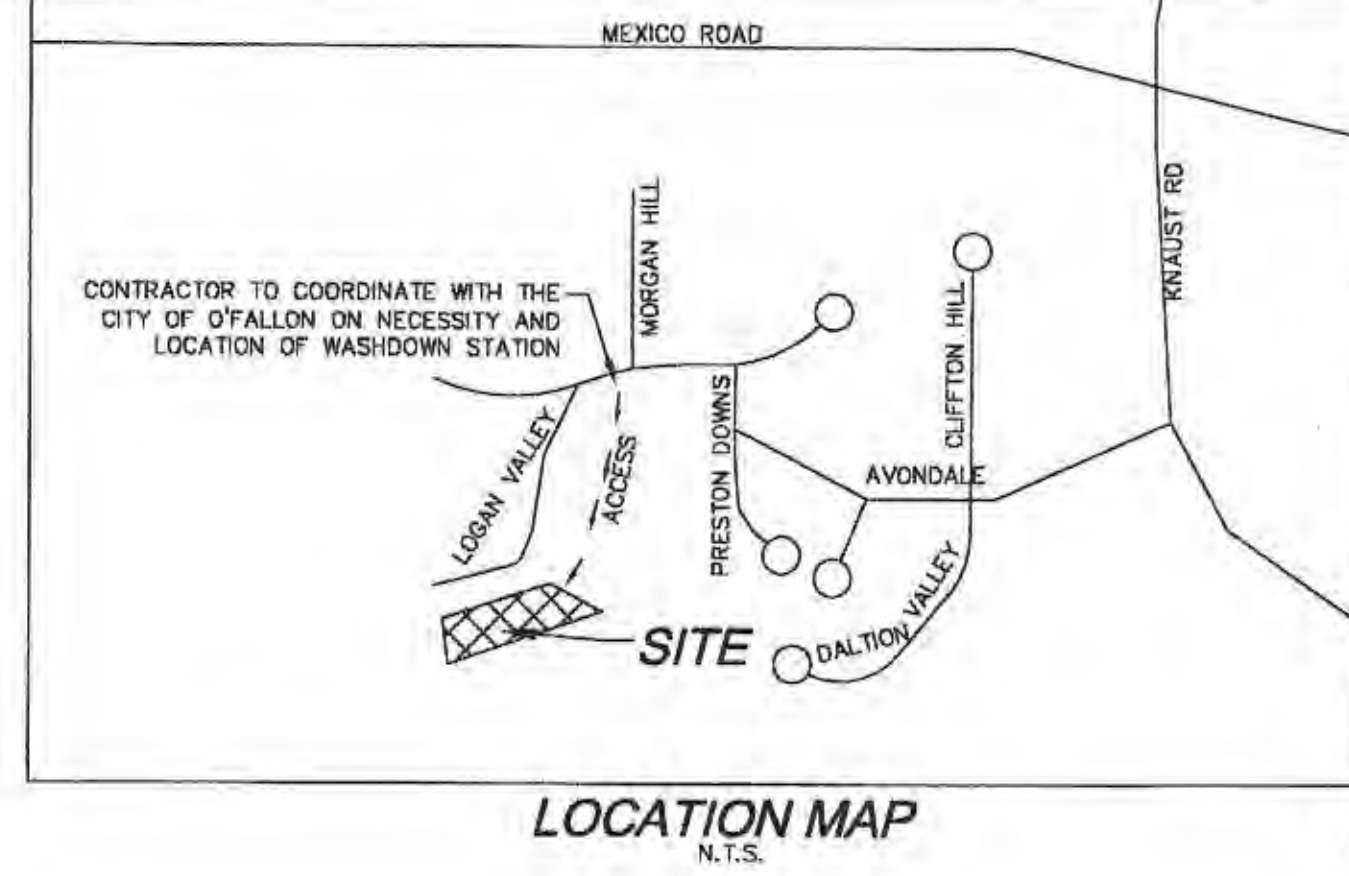
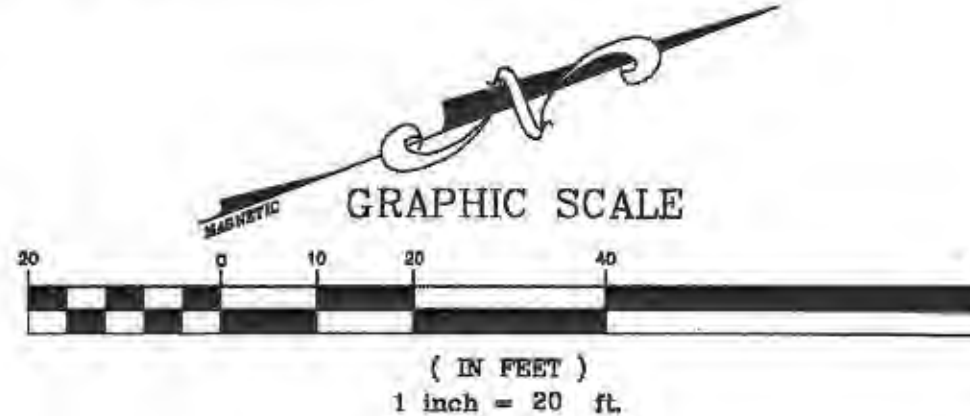
AVONDALE HEIGHTS

SWALE STABILIZATION PLAN

A TRACT OF LAND BEING PART OF FRACTIONAL SECTION 9, TOWNSHIP 46 N,
RANGE 3 E, CITY OF O'FALLON, ST. CHARLES COUNTY, MISSOURI

LEGEND

	EXISTING	PROPOSED
TREE LINE		
CONTOURS		
SANITARY SEWERS		
STORM SEWERS		
RIGHT-OF-WAY		
PROPERTY LINE		
EASEMENT		
SPOT ELEVATION		
CENTER LINE		
GAS MAIN		
WATER MAIN		
UNDERGROUND TELEPHONE		
FENCE		
SILTATION CONTROL		
RETAINING WALL		
FIRE HYDRANT		
POWER POLE		
CURB INLET		
FLARED END SECTION		
AREA INLET		
STREET SIGN LOCATION		
CLEANOUT		
TO BE REMOVED		(T.B.R.)
TO BE REMOVED & RELOCATED		(T.B.R. & R)
TO BE ABANDONED & FILLED		(T.B.A. & F.)
TO BE USED IN PLACE		(U.I.P.)
STORM DRAIN UTILITY EASEMENT		(SDUE)



ALL OFF-SITE AREAS DISTURBED AS A RESULT OF ANY WORK DONE IN ACCORDANCE WITH THIS PLAN SHALL BE RESTORED WITH LIKE MATERIALS (PAVEMENT, TURF, PLANTINGS, IMPROVEMENTS, FENCES, ETC.) PER THE STANDARDS OF THE RESIDENCE.

CONSTRUCTION NOTES

- CONCRETE FOR THE STRUCTURE SHALL BE "AIR ENTRAINMENT" AND CONTAIN AT LEAST 8 SACK CLASS "A" AEA PORTLAND CEMENT PER CUBIC YARD. THE CONCRETE SHALL BE PLACED AT A SLUMP OF 5" +/- 1". THE CONCRETE SHALL BE PROPORTIONED AND TRANSPORTED IN ACCORDANCE WITH ASTM C-94.
- REINFORCED STEEL SHALL CONFORM TO ASTM C615-40 WITH DEFORMATIONS CONFORMING TO ASTM A-305 AND SHALL HAVE A MIN COVER OF 2" EXCEPT FOR 3" WHERE CONCRETE IS POURED AGAINST EARTH.
- LAPS AND/OR SPICES IN REINFORCING STEEL SHALL BE A MIN OF 30 BAR DIA.
- KEYED JOINTS ARE TO BE 2" X 2" KEYED CONSTRUCTION JOINTS.
- f's = 24,000 PSI
- f'c = 3,750 PSI
- 2" CLEAR (TYPE) TO CLOSEST REBAR TO CONCRETE SURFACE.
- ALL EXPOSED EDGES TO HAVE A 3/4" CHAMFER
- CONTRACTOR TO PROVIDE FOR CHANNEL FLOW DURING CONSTRUCTION OF STRUCTURE.

- TREES, ORGANIC DEBRIS, RUBBLE, FOUNDATIONS AND OTHER DELETERIOUS MATERIAL SHALL BE REMOVED FROM THE SITE AND DISPOSED OF IN ACCORDANCE WITH ALL APPLICABLE LAWS AND REGULATIONS.
- STONES WITHIN THE LINED SWALE WILL BE EVALUATED IN THE FIELD AFTER INSTALLATION FOR EFFECTIVENESS AND FIELD MODIFIED, IF NECESSARY, TO REDUCE EROSION OF THE SITE.
- ALL CONCRETE PIPES WILL BE INSTALLED WITH O-RING RUBBER TYPE GASKETS.
- CONTRACTOR SHALL PROVIDE SHOP DRAWING OF THE ENERGY DISSIPATER PRIOR TO CONSTRUCTION.
- WOVEN GEOTEXTILE FABRIC SHALL BE MARIFI 160 OR EQUIVALENT.
- MAINTENANCE OF THE ENERGY DISSIPATORS WILL BE THE RESPONSIBILITY OF THE AVONDALE HEIGHTS HOME OWNERS ASSOCIATION.

BENCHMARK

U.S.G.S. BRASS DISK "F-149 1935" ELEVATION=542.804
DESCRIPTION: THE STATION IS A USCGS BRASS VERTICAL MARK DISK STAMPED "F149 1935" SET IN A 6 INCH SQUARE CONCRETE MONUMENT, PROJECTING ABOUT 2.5 INCHES ABOVE THE GROUND SURFACE. THE AZMUTH MARK IS A NO GRS ALUMINUM DISK STAMPED "149A 2000" SET IN A 12 INCH DIAMETER CONCRETE MONUMENT FLUSH WITH THE GROUND

SITE BENCHMARK

ELEVATION = 525.24
LOT CROSS FOUND AT WEST PROLONGATION OF COMMON LOT LINE BETWEEN LOTS 475 AND 476 ON THE EAST CURB OF LOGAN VALLEY DR.

FLOOD MAP REFERENCE

PER FLOOD INSURANCE MAP (FIRM) NUMBER 28183C0243E WITH AN EFFECTIVE DATE OF AUGUST 2, 1995, NO FLOOD PLANE EXISTS ON THIS SITE.

UTILITY INFORMATION:

UTILITIES SHOWN HAVE BEEN TAKEN FROM AVAILABLE SURVEYS, UTILITY COMPANY MAPS AND PHYSICAL PROPERTY INSPECTION. THE LOCATIONS AND FACILITIES SHALL BE CONSIDERED APPROXIMATE ONLY. THERE MAY BE ADDITIONAL UTILITIES THAT HAVE NOT BEEN SHOWN ON THIS SURVEY. THE CONTRACTOR WILL BE RESPONSIBLE FOR THE LOCATIONS OF ALL UTILITIES PRIOR TO EXCAVATION OR CONSTRUCTION.

CITY OF O'FALLON
COMMUNITY DEVELOPMENT DEPARTMENT
ACCEPTED FOR CONSTRUCTION
BY: DATE: 7/29/08
PROFESSIONAL ENGINEER'S SEAL
INDICATES RESPONSIBILITY FOR DESIGN



1-800-DIG-RITE

CALL 1-800-DIG-RITE (MISSOURI ONE CALL) TO HAVE LOCATIONS MARKED IN THE FIELD (SUBSCRIBING INDUSTRIES REQUIRE 48 HOURS NOTICE PRIOR TO CONSTRUCTION)

MoDOT IS NOT PART OF DIG RITE. PLEASE CALL MoDOT CUSTOMER SERVICE 48 HOURS BEFORE DIGGING: (314)340-4100

DATE	REVISIONS
11/20/2007	1. ISS.
10/07/2008	2. CITY OF O'FALLON COMMENTS
3/15/2008	3. CITY OF O'FALLON COMMENTS

PREPARED FOR:
GLENN E BORGARD, P.E.
1828 STENON PATH
CHESTERFIELD, MO 63005
(636) 532-0002
JOB #0183



AVONDALE HEIGHTS
SWALE STABILIZATION
O'FALLON, MISSOURI
SITE PLAN

planning • engineering • surveying • landscape architecture
Cole
and ASSOCIATES
INCORPORATED
10777 sunset office dr. suite 10
saint louis, missouri 63127
p. 314.984.9887 f. 314.984.0587

DESIGNED BY: JB
DRAWN BY: JB
CHECKED BY: MGB/GEB
DATE: 10/17/2007
SCALE: 1"=20'
Job Number: 07-196
Sheet Number: C1.0