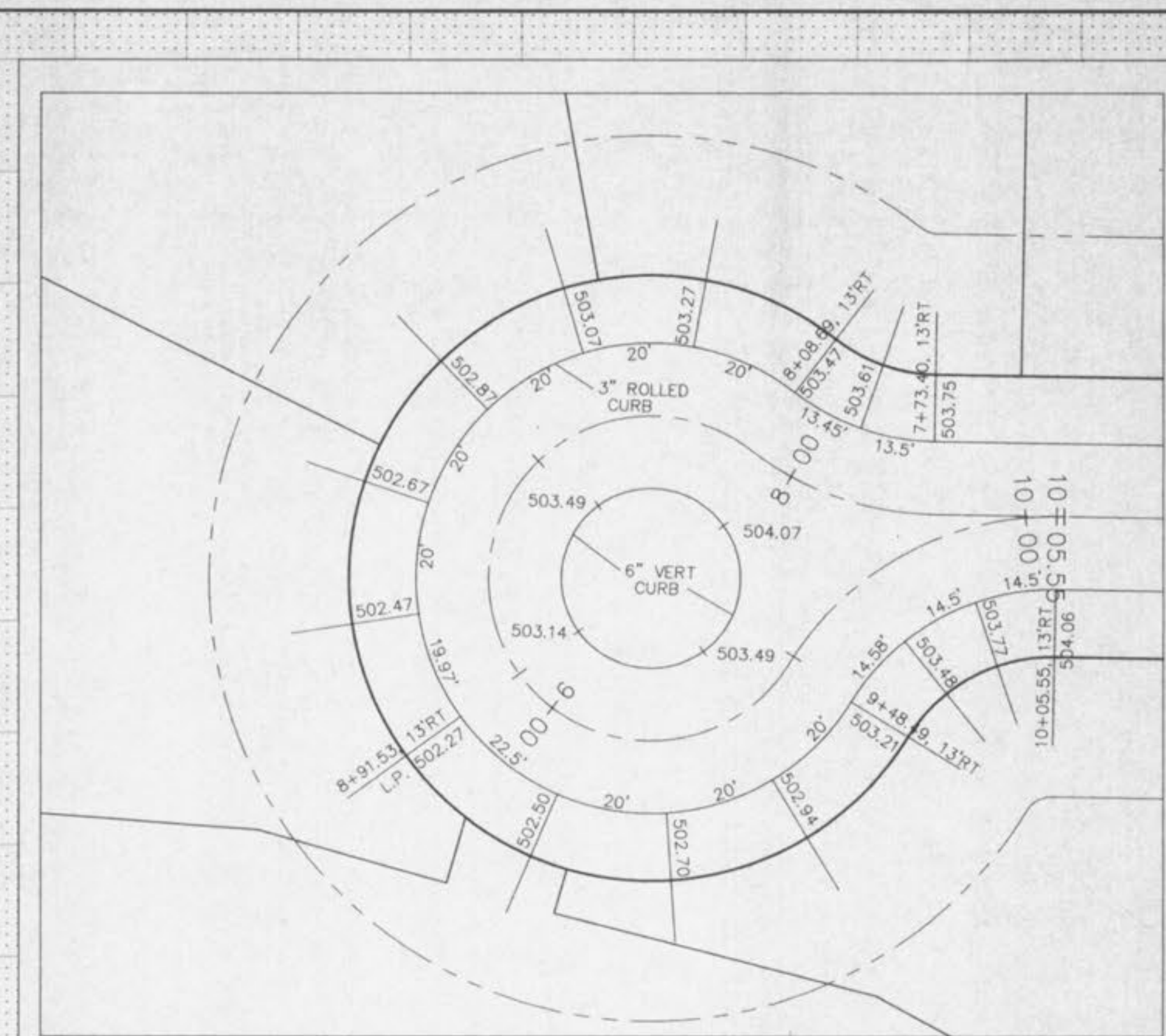
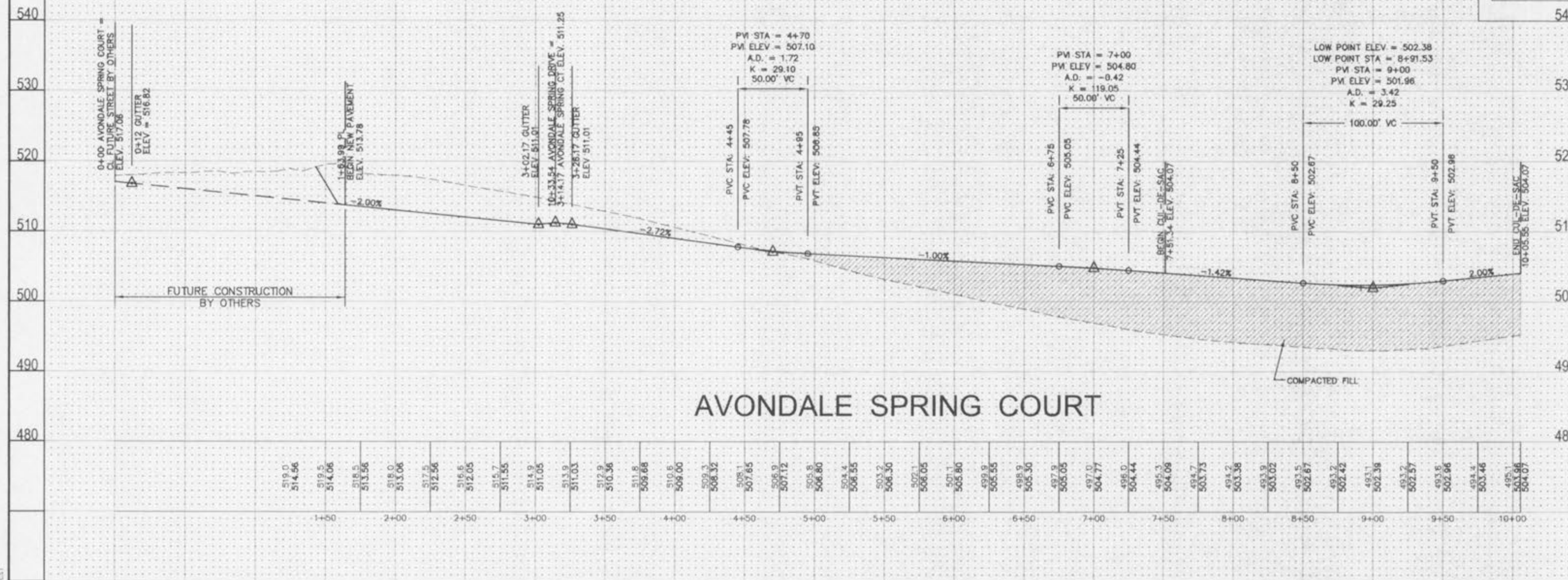


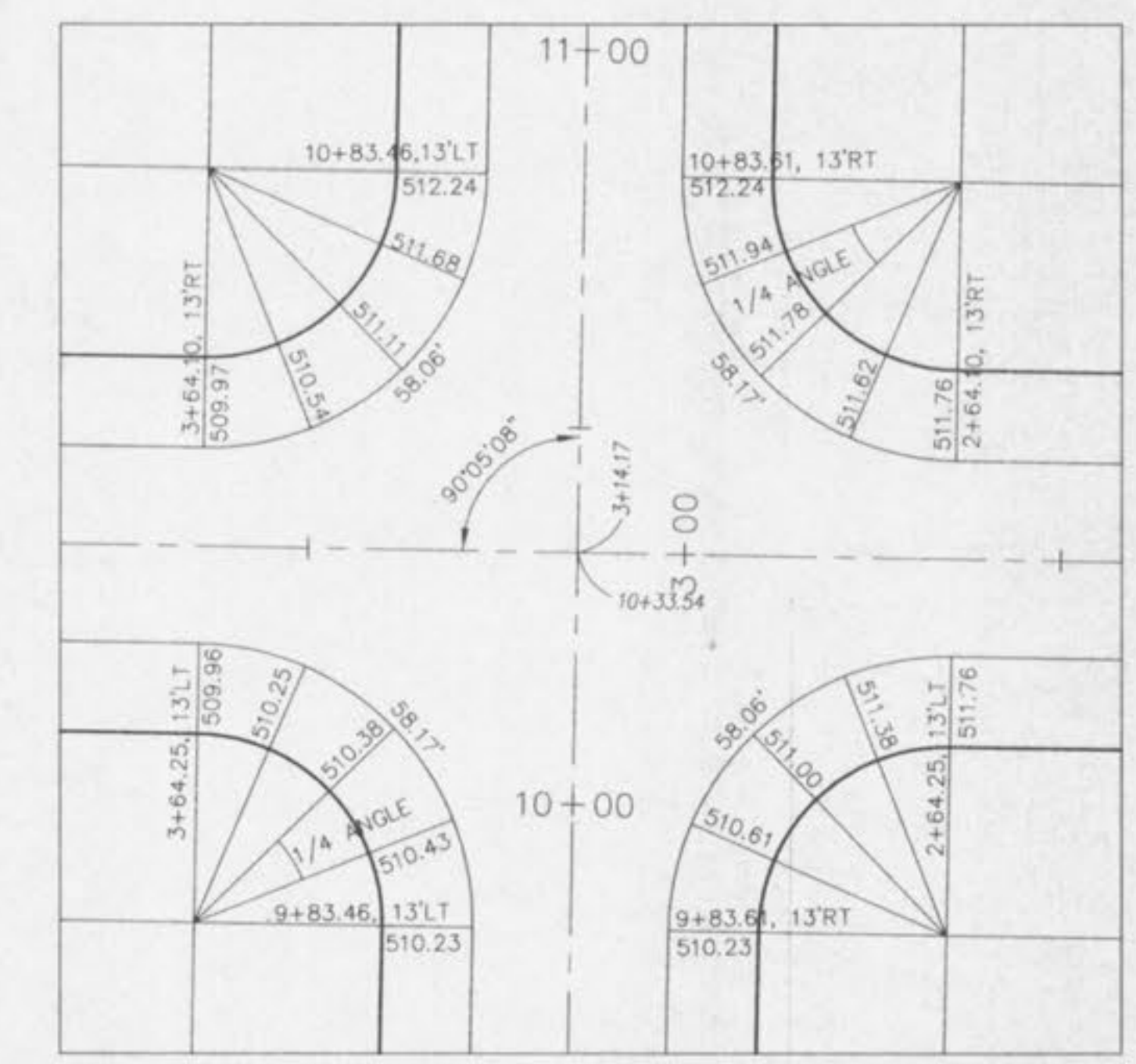
AVONDALE SPRING DRIVE



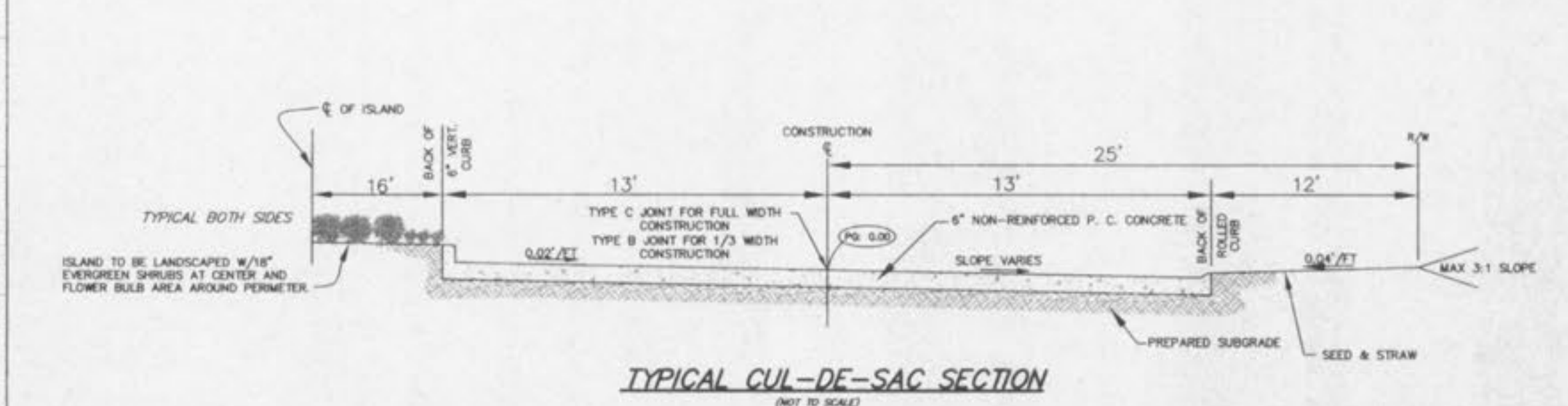
AVONDALE SPRING COURT
SCALE: 1"=20'



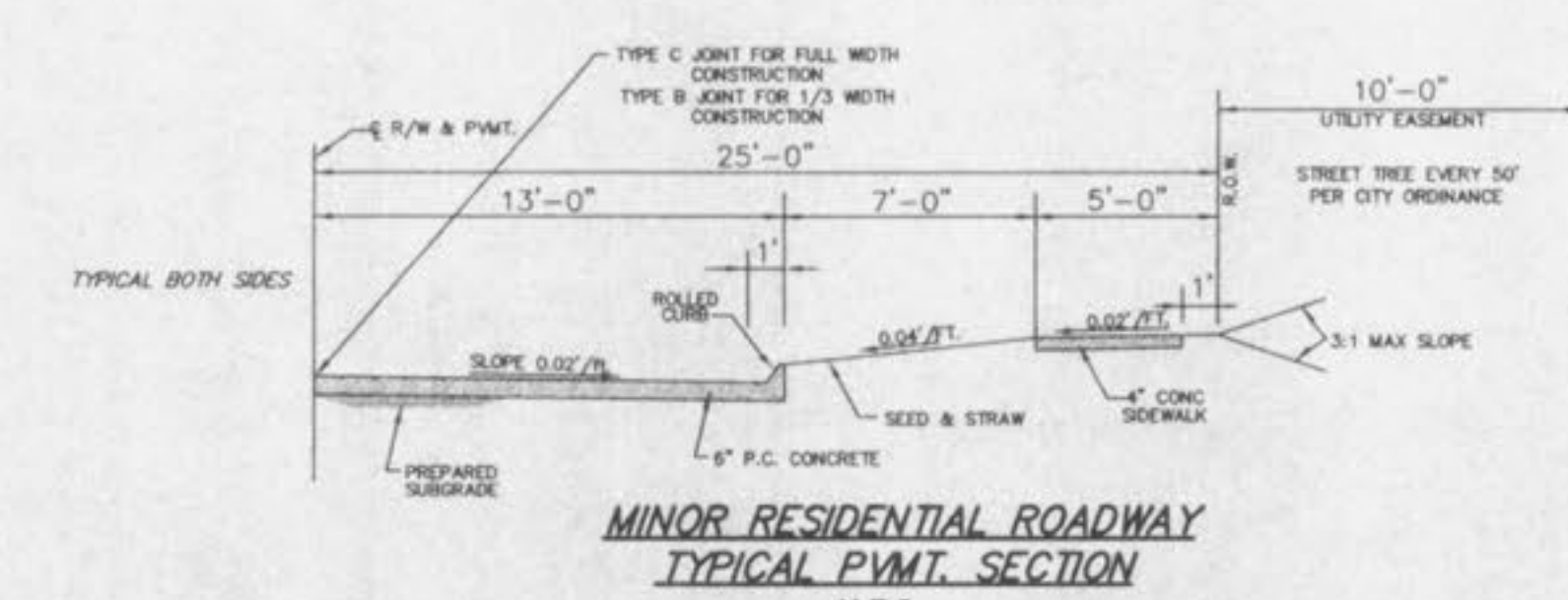
AVONDALE SPRING COURT



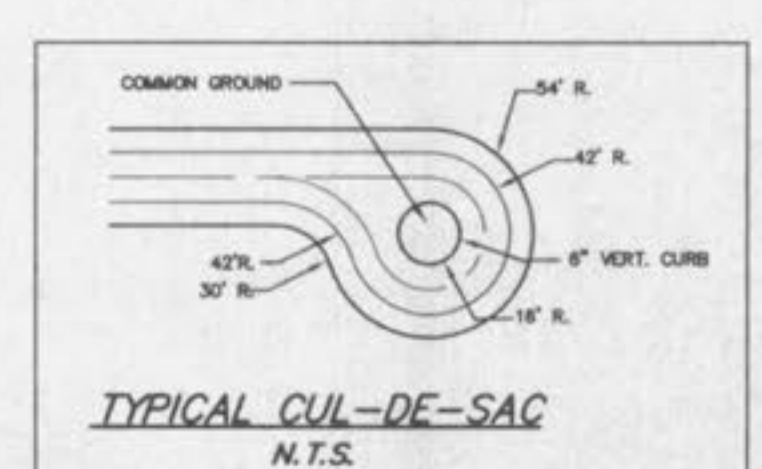
AVONDALE SPRING DRIVE & COURT
SCALE: 1"=20'



TYPICAL CUL-DE-SAC SECTION
(NOT TO SCALE)



MINOR RESIDENTIAL ROADWAY
TYPICAL P.V.M.T. SECTION
N.T.S.



TYPICAL CUL-DE-SAC
N.T.S.

ISSUE	REMARKS/DATE
1	10-19-01 FIRST SUBMITTAL
2	11-26-01 CITY COMMENTS
3	12-12-01 DCSD COMMENTS & ADDRESSES
4	01-22-01 CITY COMMENTS
5	02-25-02 CITY COMMENTS

PREPARED FOR:
GOLDKAP III, L.L.C.
401 NORTH LINDBERGH BOULEVARD
ST. LOUIS, MO. 63141
(314) 432-3088



PREPARED BY:
THE STERLING CO.
ENGINEERS & SURVEYORS
5055 NEW BAUMGARTNER ROAD
ST. LOUIS, MISSOURI 63129
(314) 487-0440 FAX 487-8944
E-Mail: Sterling@sterling-eng-sur.com

DRAWN: GS
DESIGNED: JM
CHECKED: DM

PROJECT:
AVONDALE SPRING
SHEET TITLE:
STREET PROFILES & DETAILS

NO. 01 01 012	SHEET 4
M.S.D. P#	OF 7