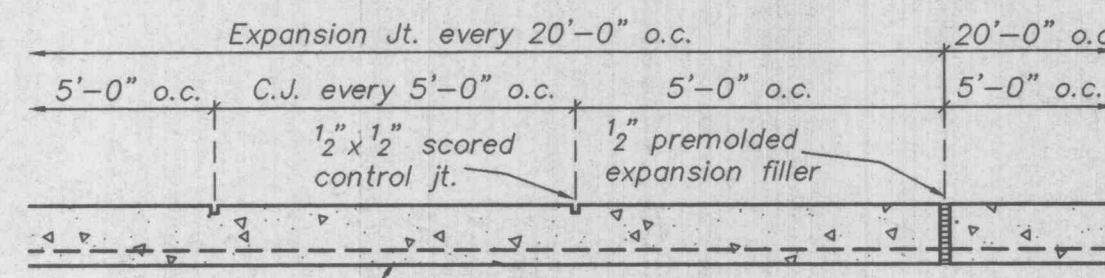


VICINITY MAP

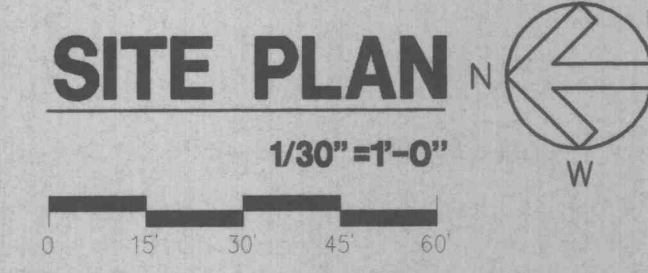
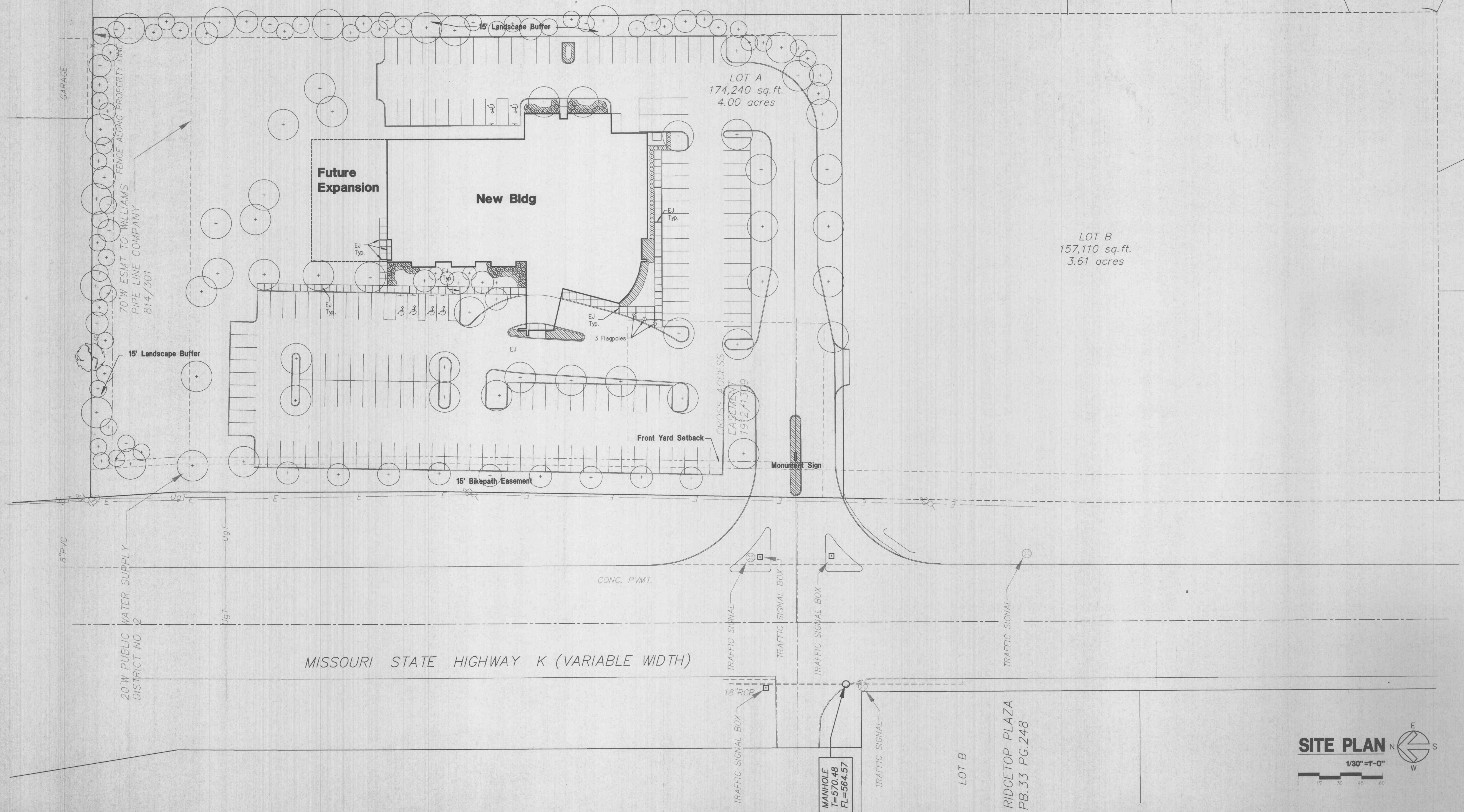
- LEGEND
- ⊕ UTILITY POLE
 - ⊙ LIGHT STANDARD
 - MANHOLE
 - ⊕ FIRE HYDRANT
 - ⊕ TREE
 - ⊕ WATER VALVE
 - ⊕ TELEPHONE PEDESTAL
 - ⊕ TREE LINE
 - ⊕ TEST HOLE
 - ⊕ SIGN
 - UG— UNDERGROUND TELEPHONE
 - G— GAS LINE
 - W— WATER LINE
 - E— OVERHEAD ELECTRIC
 - C— OVERHEAD CABLE TV
 - FENCE



TYPICAL CONC. WALK DETAIL

NOTE: See Civil Drawings for walk width. Maintain a 2% cross slope on all walks, slope toward drive or as shown.

N/F
OWENS & SONS DEVELOPMENT CO.
1679/1151



SITE PLAN

I hereby certify that the portion of this technical submission described below was prepared by me or under my direct supervision and responsible charge. I am a duly registered architect under the laws of the state of Missouri.

Name: Steven E. Lichtenfeld

Signature:

Sheet: A0.0 To A6.5

Wischmeyer
THE WISCHMEYER ARCHITECTS

St. Louis, Missouri
Springfield, Missouri
Fayetteville, Arkansas

Architecture
Planning
Interiors
Consulting

1221 Locust Street
St. Louis, Missouri 63103
314.231.4704 Telephone
314.231.4331 Fax

Client:
BJC Health System
8980 Clayton Road
Suite 100
St. Louis, Mo. 63124
1-314-953-1980

BJC HEALTH SYSTEM

Project:
**BJC - O'Fallon
Family Health
Center**

2360 Highway K
O'Fallon, Missouri
63366

Revisions

Prj # 97049
Date: 11/14/97
Sheet Contents

SITE PLAN

Sheet No.

A1

The Wischmeyer Architects, Inc. 1997(c)