

I hereby certify that the portion of this technical submission described below was prepared by me or under my direct supervision and responsible charge. I am a duly registered architect under the laws of the state of Missouri.

Name: Steven E. Lichtenfeld

Signature: _____

Sheet: A5.2 To: Site 5

Wischmeyer
THE WISCHMEYER ARCHITECTS

St. Louis, Missouri
Springfield, Missouri
Fayetteville, Arkansas

Architecture
Planning
Interiors
Consulting

1221 Locust Street
St. Louis, Missouri 63103
314.231.4704 Telephone
314.231.4331 Fax

Client:
BJC Health System
9890 Clayton Road
Suite 100
St. Louis, Mo. 63124
1-314-953-1980

BJC HEALTH SYSTEM

Project:
BJC - O'Fallon Family Health Center

2360 Highway K
O'Fallon, Missouri
63366

Revisions

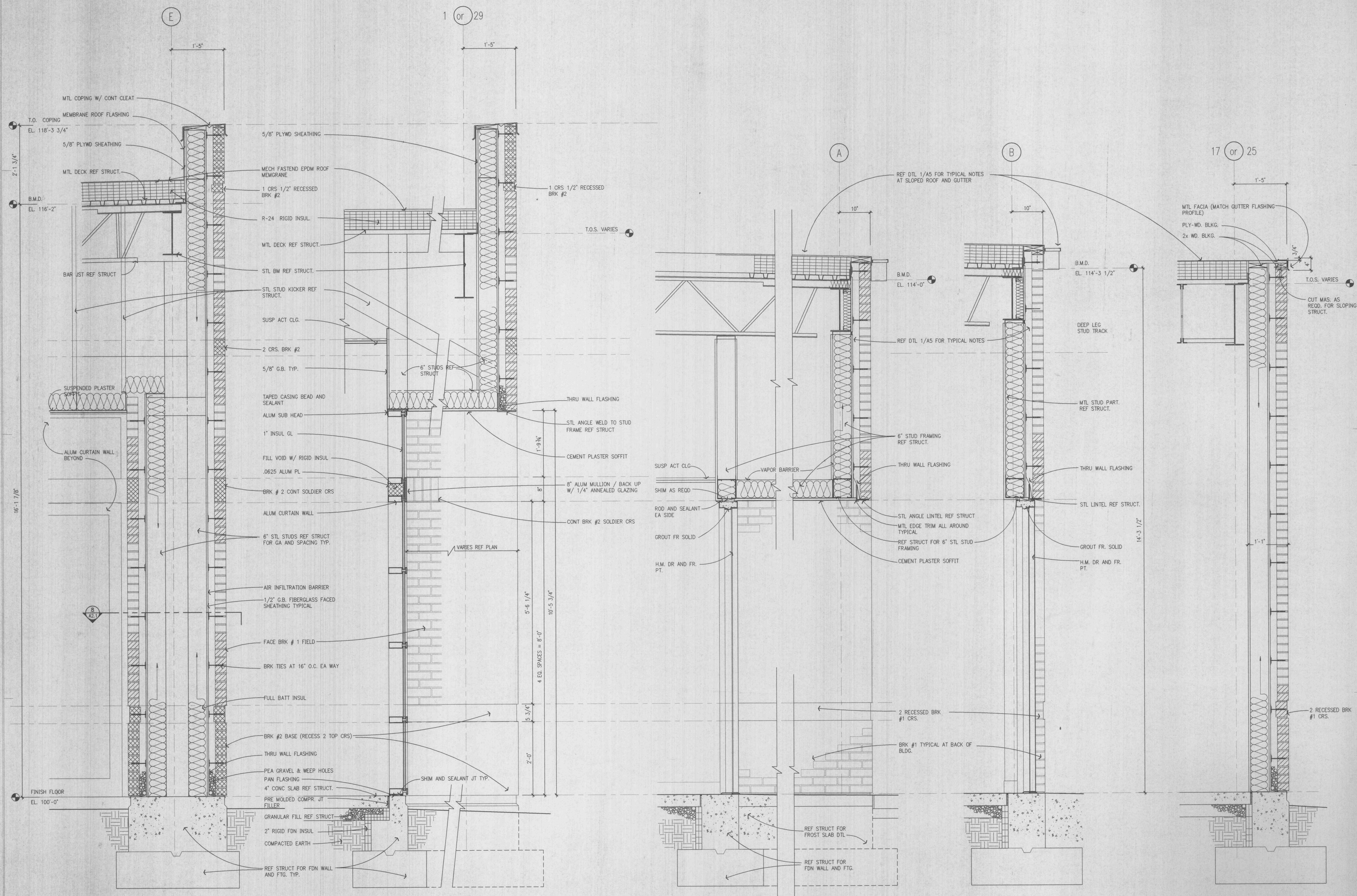
Prj # **97049**
Date: **11-14-97**

Sheet Contents
Wall Sections

Sheet No.

A5.2

The Wischmeyer Architects, Inc. 1997(c)



1 WALL SECTION
SCALE 1"=1'-0"

2 WALL SECTION
SCALE 1"=1'-0"

3 WALL SECTION
SCALE 1"=1'-0"

4 WALL SECTION
SCALE 1"=1'-0"

5 WALL SECTION
SCALE 1"=1'-0"