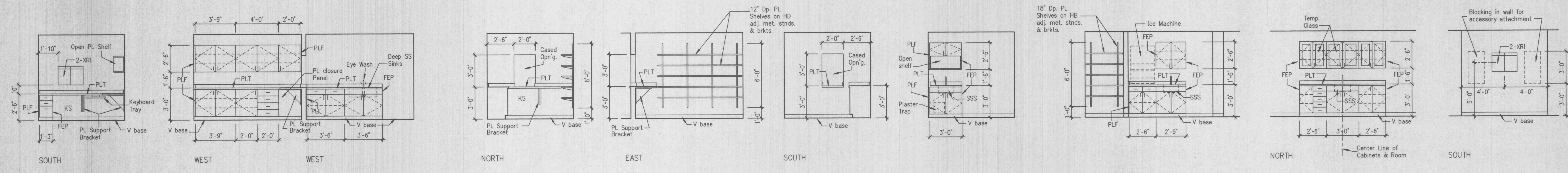
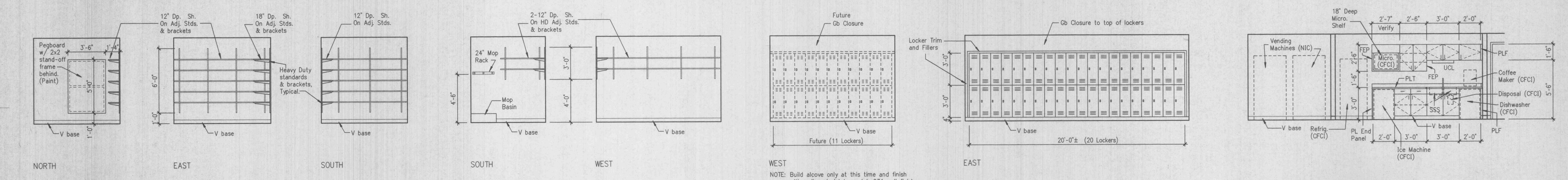


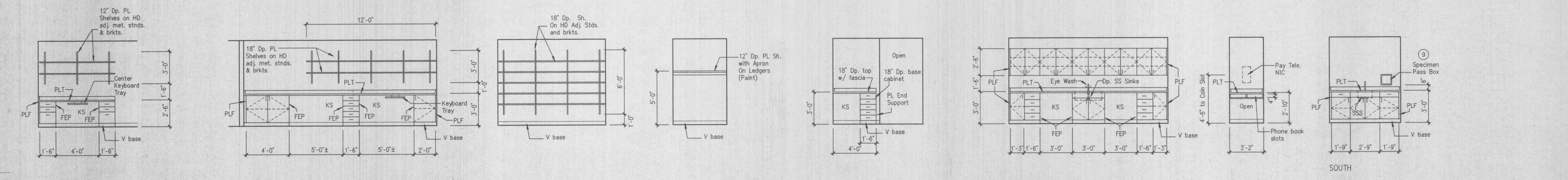
1 COMM. RM.-002 A6.1 1/4"=1'-0"
 2 REGISTRATION-006 A6.1 1/4"=1'-0"
 3 REGISTRATION-006 A6.1 1/4"=1'-0"
 4 REGISTRATION-006 A6.1 1/4"=1'-0"
 5 WORK-007 A6.1 1/4"=1'-0"



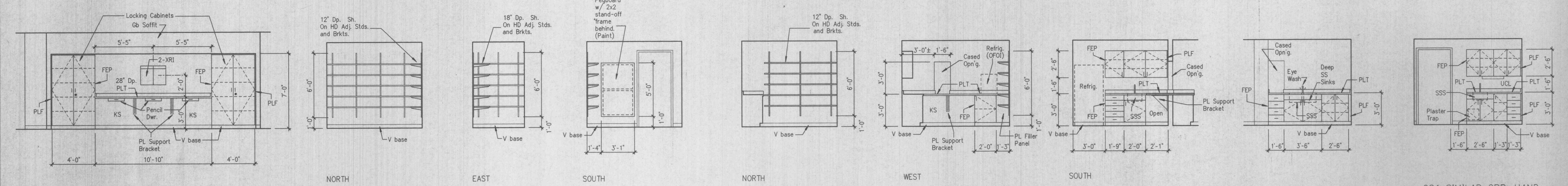
6 WORK-007 A6.1 1/4"=1'-0"
 6 C. UTIL.-014 A6.1 1/4"=1'-0"
 7 S. UTIL.-015 A6.1 1/4"=1'-0"
 8 EXAM-016 A6.1 1/4"=1'-0"
 9 TEST.-021 A6.1 1/4"=1'-0"
 10 TREATMENT-022 A6.1 1/4"=1'-0"



11 STORAGE-025 A6.1 1/4"=1'-0"
 12 HOUSEKEEPING-028 A6.1 1/4"=1'-0"
 13 CORRIDOR-031 A6.1 1/4"=1'-0"
 14 LOUNGE-034 A6.1 1/4"=1'-0"



15 MED. RECORDS-037 A6.1 1/4"=1'-0"
 16 MED. RECORDS-037 A6.1 1/4"=1'-0"
 17 CLOS.-040 A6.1 1/4"=1'-0"
 18 DRESS.-044 A6.1 1/4"=1'-0"
 19 BLD. DRW.-047 A6.1 1/4"=1'-0"
 20 LAB-048 A6.1 1/4"=1'-0"
 21 CORR.-051 A6.1 1/4"=1'-0"
 22 TEST-064 A6.1 1/4"=1'-0"



23 CHART-065 A6.1 1/4"=1'-0" 093 SIMILAR OPP. HAND
 24 STORAGE-071 A6.1 1/4"=1'-0" 078 SIMILAR OPP. HAND
 25 C. UTIL.-077 A6.1 1/4"=1'-0"
 26 S. UTIL.-079 A6.1 1/4"=1'-0"
 27 PROCEDURE-080 A6.1 1/4"=1'-0"

I hereby certify that the portion of this technical submission described below was prepared by me or under my direct supervision and responsible charge. I am a duly registered architect under the laws of the State of Missouri.
 Name: Steven E. Lichtenfeld
 Signature: _____
 Date: 11/14/97

Wischmeyer
 THE WISCHMEYER ARCHITECTS
 St. Louis, Missouri
 Springfield, Missouri
 Fayetteville, Arkansas
 Architecture
 Planning
 Interiors
 Consulting
 1221 Locust Street
 Saint Louis, Missouri 63103
 314.231.4704 Telephone
 314.231.4531 Fax

Client:
BJC Health System
 9890 Clayton Road
 Suite 100
 St. Louis, Mo. 63124
 1-314-953-1980

BJC HEALTH SYSTEM
 Project
BJC - O'Fallon Family Health Center

2360 Highway K
 O'Fallon, Missouri
 63366

Revisions

Prj # 97049
 Date: 11/14/97
 Sheet Contents

INTERIOR ELEVATIONS

Sheet No. **A6.1**
 The Wischmeyer Architects, Inc. 1997(C)