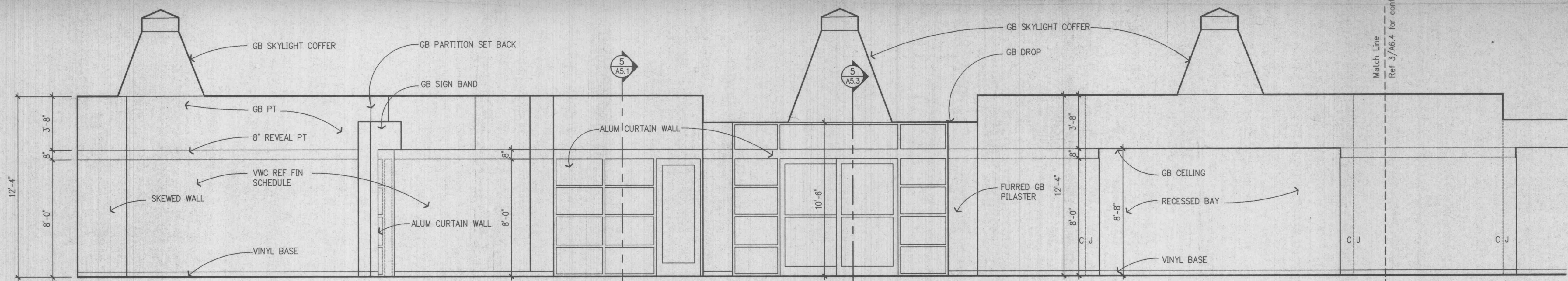
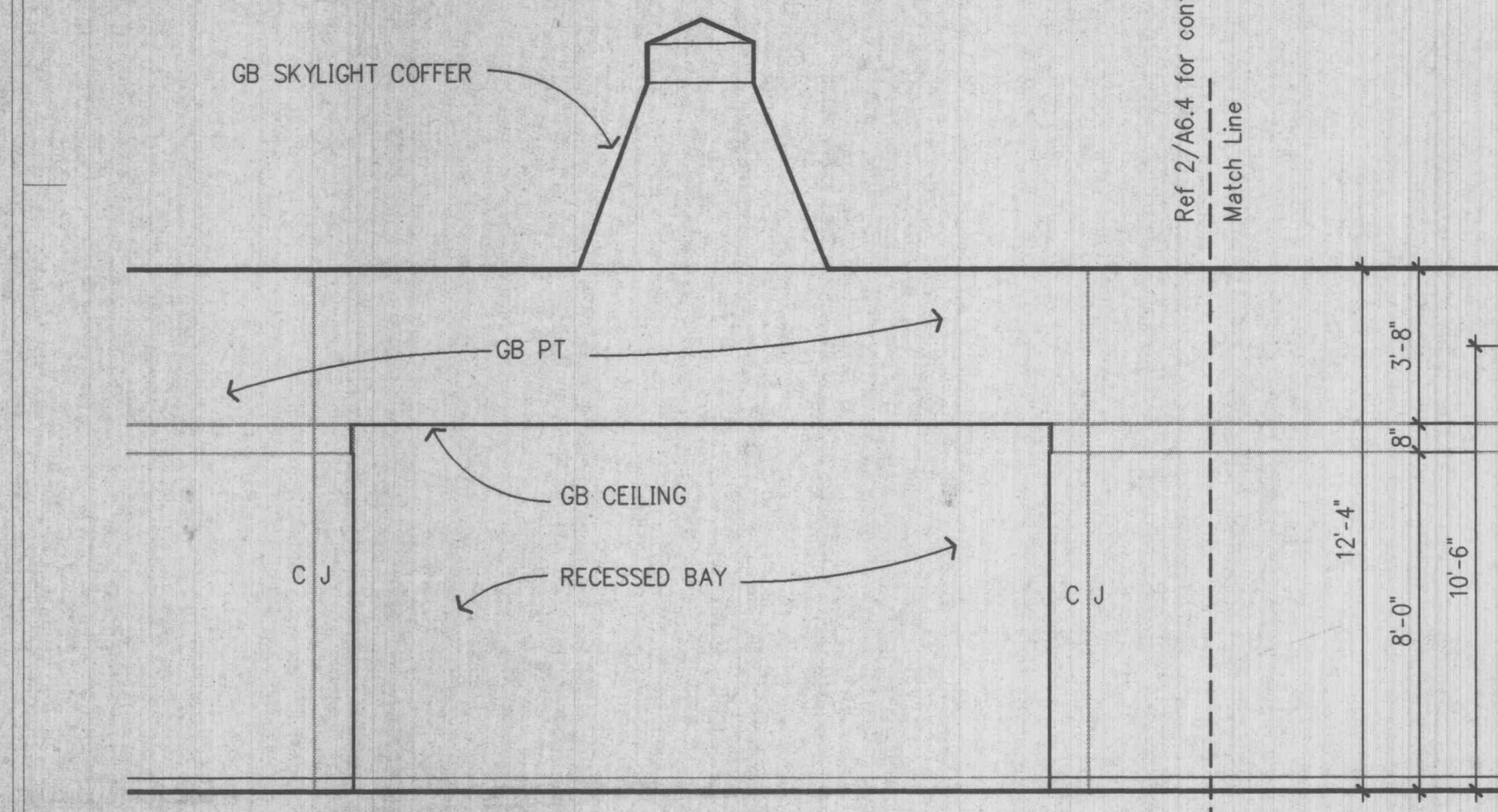


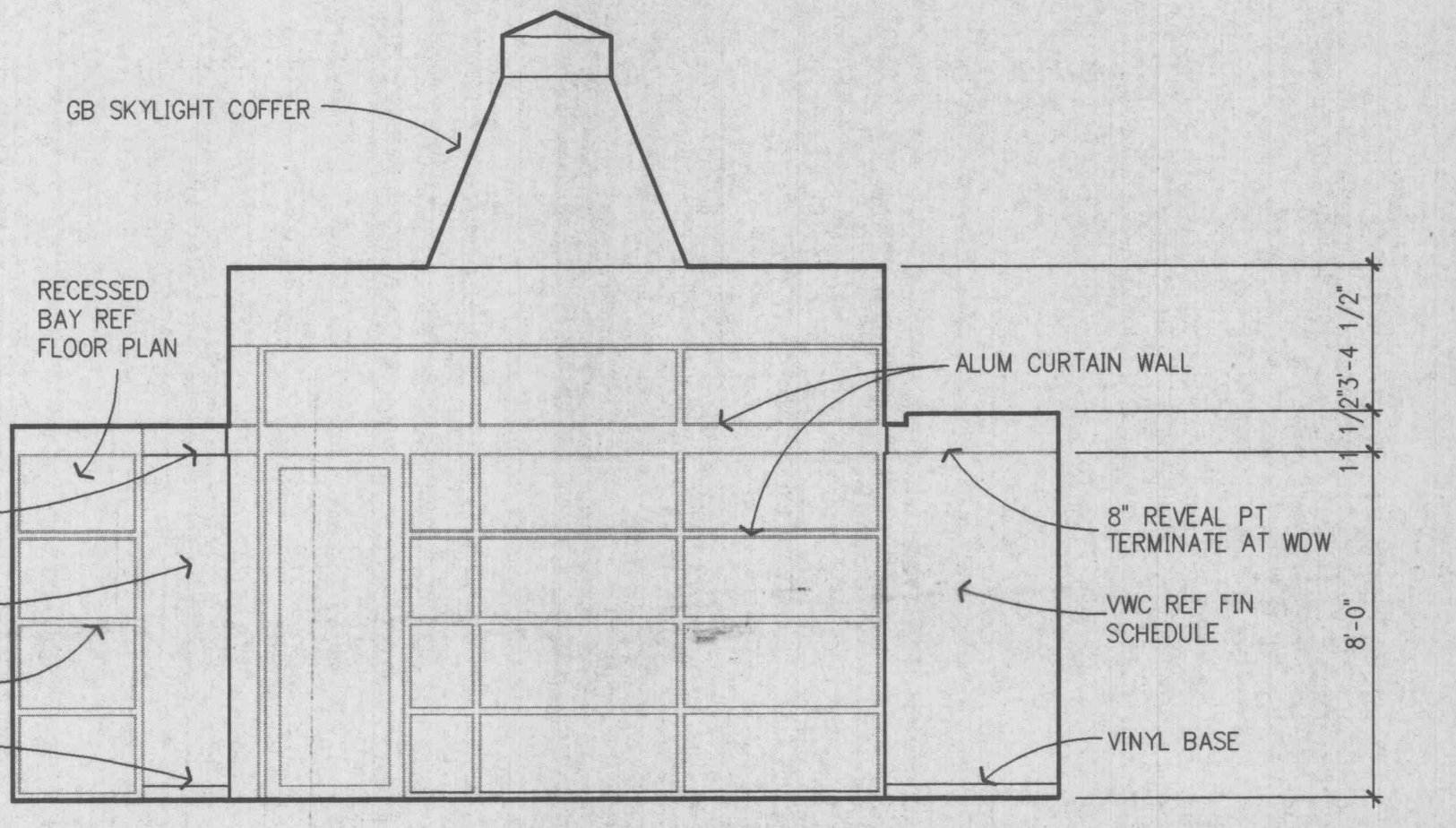
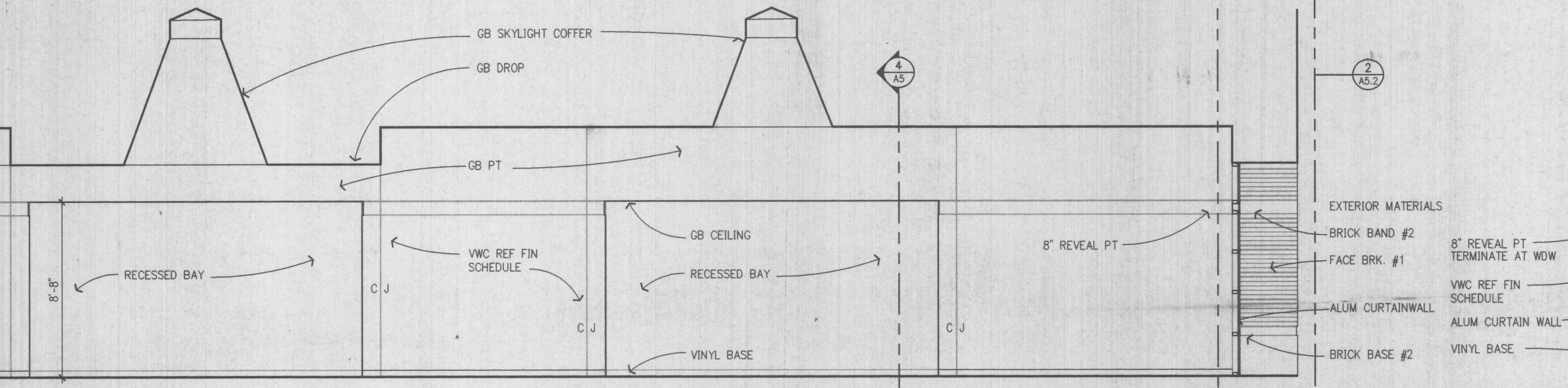
1 LOBBY SECTION AT REGISTRATION
A6.4 1/4" = 1'-0"



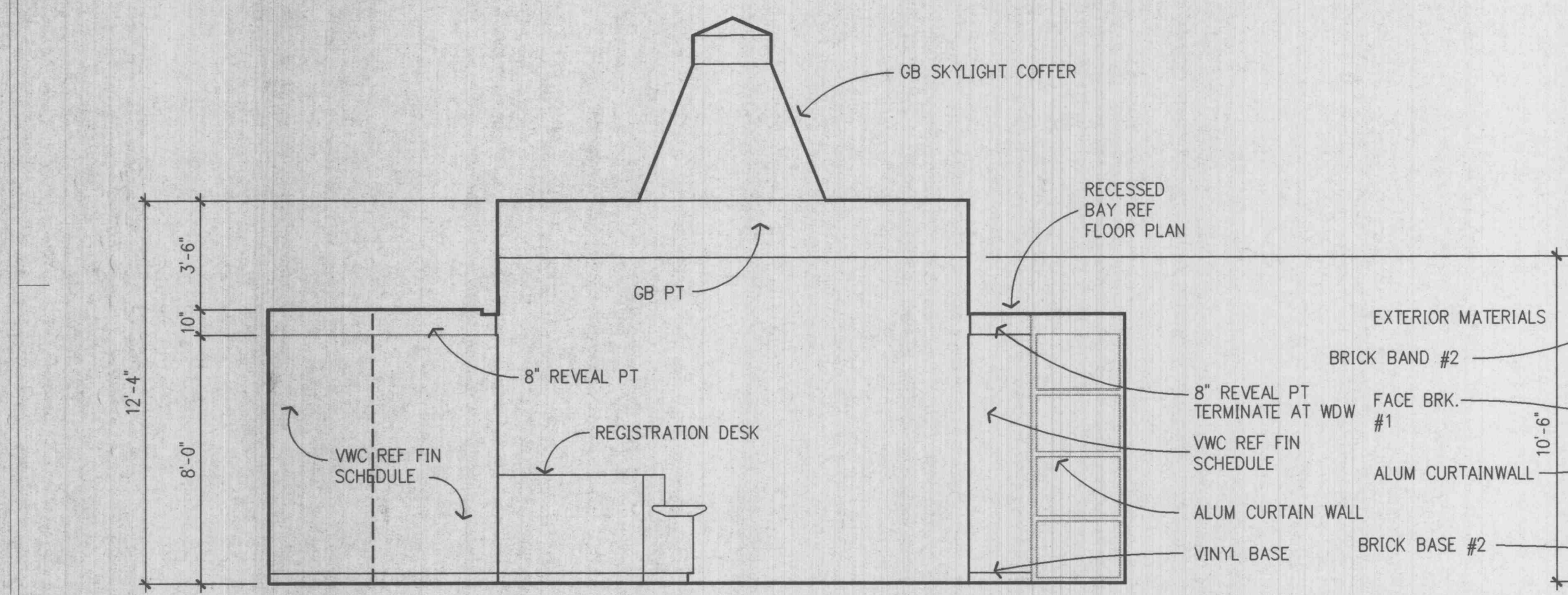
2 LOBBY AND WAITING ROOMS
A6.4 1/4" = 1'-0"



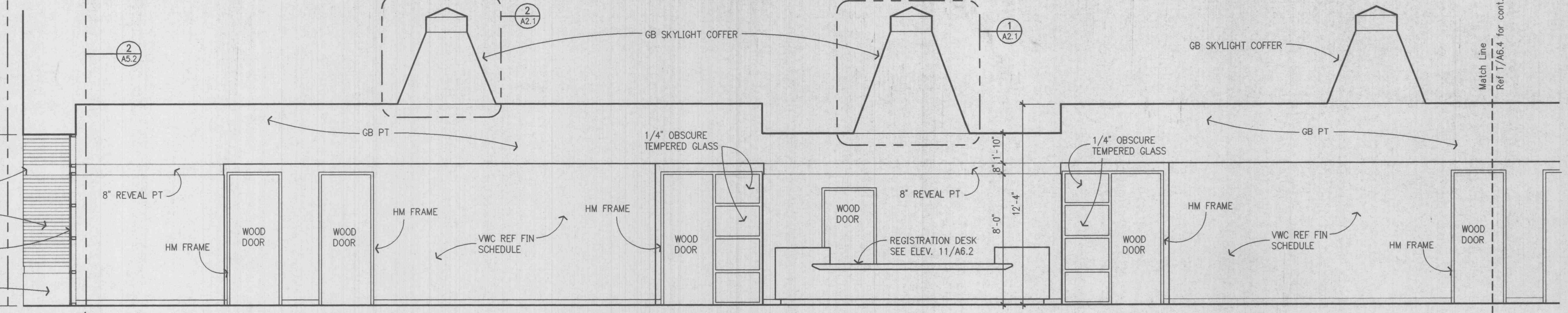
3 LOBBY AND WAITING ROOMS CONTINUED
A6.4 1/4" = 1'-0"



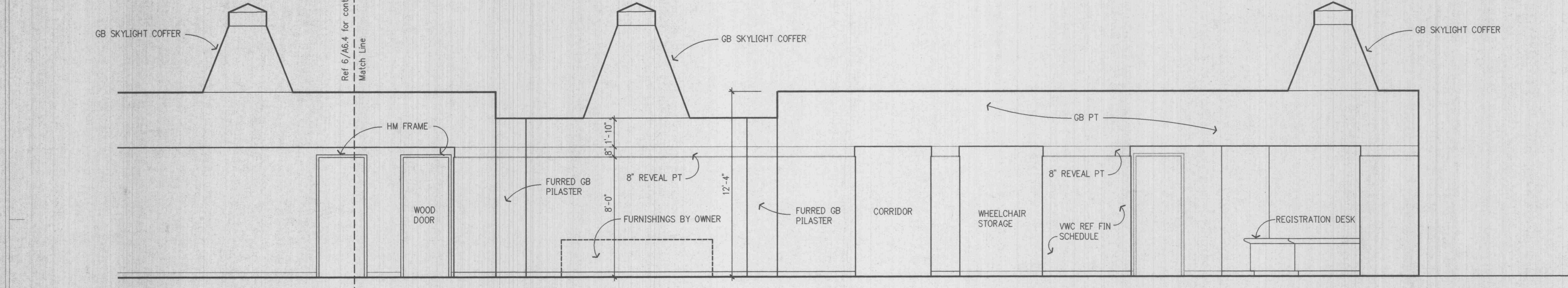
4 LOBBY END WALL
A6.4 1/4" = 1'-0"



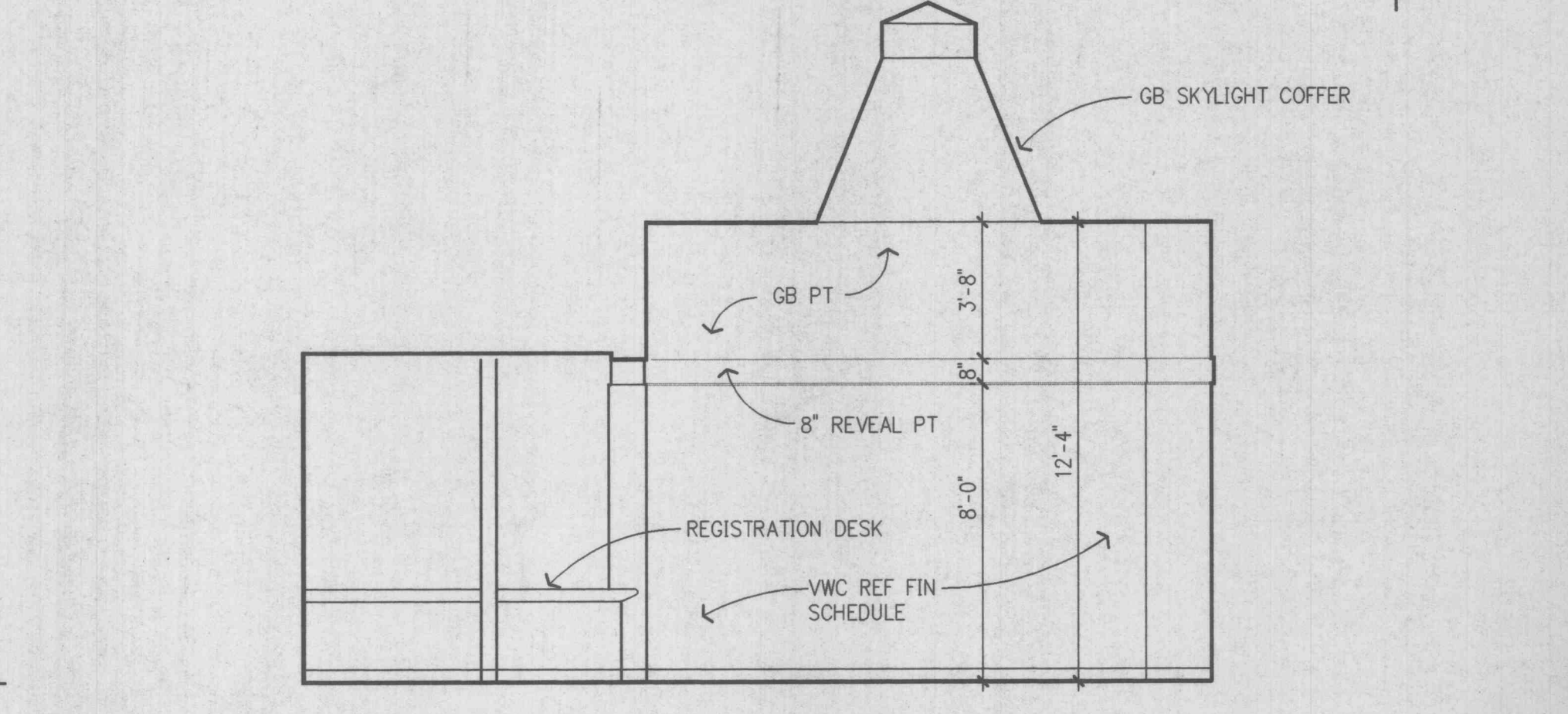
5 LOBBY SECTION AND REGISTRATION DESK
A6.4 1/4" = 1'-0"



6 LOBBY AND WAITING ROOMS
A6.4 1/4" = 1'-0"



7 LOBBY AND WAITING ROOMS CONTINUED
A6.4 1/4" = 1'-0"



8 U.C. WAITING ROOM END WALL
A6.4 1/4" = 1'-0"

I hereby certify that the portion of this technical submission described below was prepared by me or under my direct supervision and responsible charge. I am a duly registered architect under the laws of the state of Missouri.

Name: Steven E. Lichtenfeld
Signature: _____
Sheet: A6.4 To: A6.5

Wischmeyer
THE WISCHMEYER ARCHITECTS

St. Louis, Missouri
Springfield, Missouri
Fayetteville, Arkansas
Architecture
Planning
Interiors
Consulting

1221 Locust Street
Saint Louis, Missouri 63103
314.231.4704 Telephone
314.231.4331 Fax

Client:
BJC Health System
9890 Clayton Road
Suite 100
St. Louis, Mo. 63124
1-314-953-1980

BJC HEALTH SYSTEM

Project:
BJC - O'Fallon Family Health Center

2360 Highway K
O'Fallon, Missouri
63366

Revisions

Prj # 97049
Date: 11/14/97
Sheet Contents
INTERIOR ELEVATIONS

Sheet No.
A6.4
The Wischmeyer Architects, Inc. 1997(c)