

VICINITY MAP

- LEGEND
- UTILITY POLE
 - LIGHT STANDARD
 - MANHOLE
 - FIRE HYDRANT
 - TREE
 - WATER VALVE
 - ⊕ TELEPHONE PEDESTAL
 - TREE LINE
 - UNDERGROUND TELEPHONE
 - GAS LINE
 - WATER LINE
 - OVERHEAD ELECTRIC
 - OVERHEAD CABLE TV
 - FENCE

N/F
OWENS & SONS DEVELOPMENT CO.
1679/1151



FOR PLUMBING DESIGN ONLY

I hereby certify that the portion of this technical estimation described herein was prepared by me or under my direct supervision and responsible charge. I am a duly registered professional engineer under the laws of the State of Missouri.

Name: **George H. Paubel**
 Signature: *George H. Paubel*
 License No. E-13288

Sheets: P-1 To P-3

Wischmeyer
 THE WISCHMEYER ARCHITECTS
 86 Loka, Missouri
 Springfield, Missouri
 Fayetteville, Arkansas

Architecture
 Planning
 Interiors
 Consulting

1221 Locust Street
 Saint Louis, Missouri 63103
 314.231.4704 Telephone
 314.231.4331 Fax

KYHL COMPANY
 DESIGN/BUILD
 PLUMBING CONTRACTORS
 291 4300
 291 5629 FAX

Client

BJC HEALTH SYSTEM

Project:
BJC - O'Fallon Family Health Center

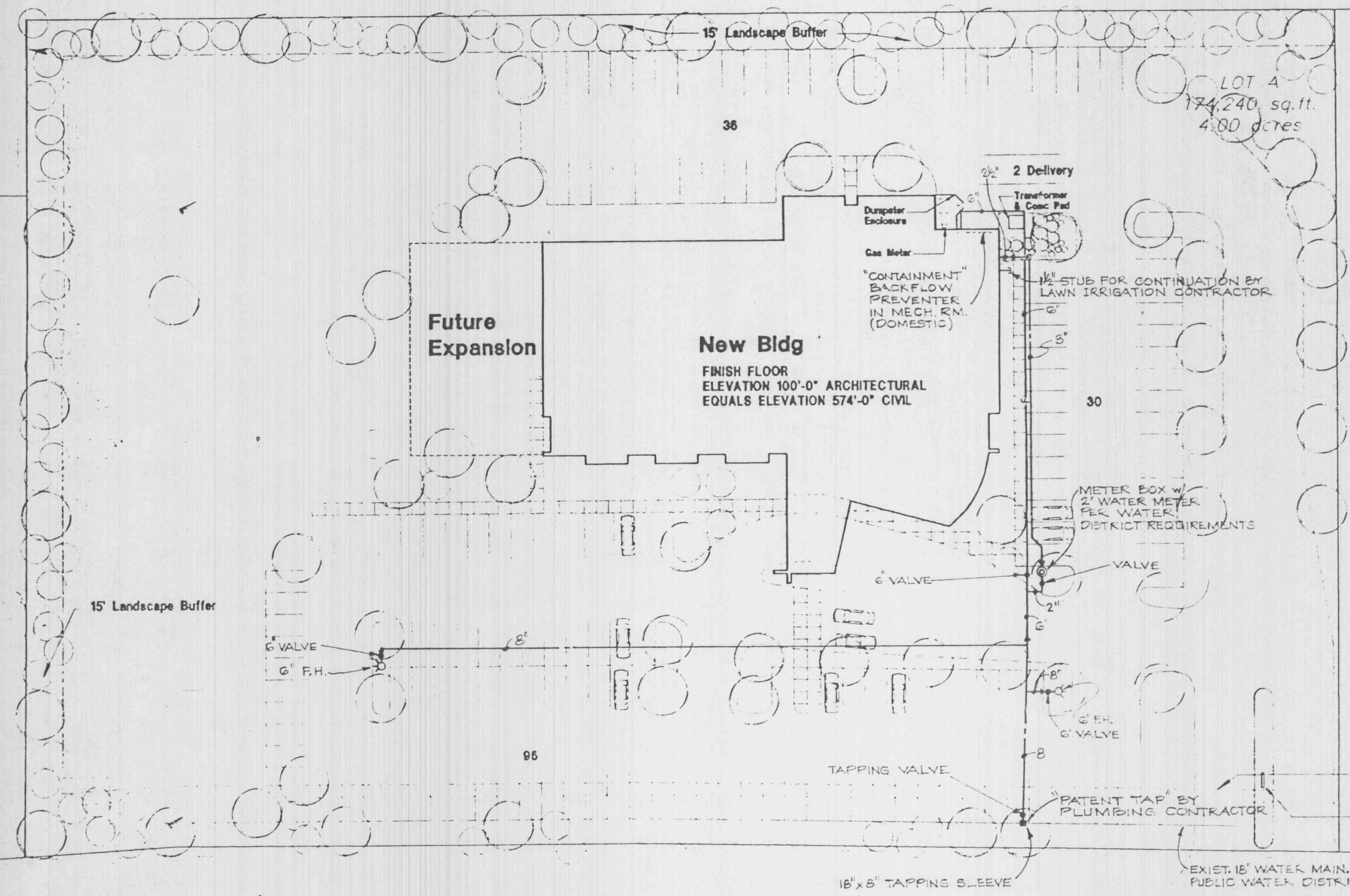
O'Fallon, Missouri

Revisions

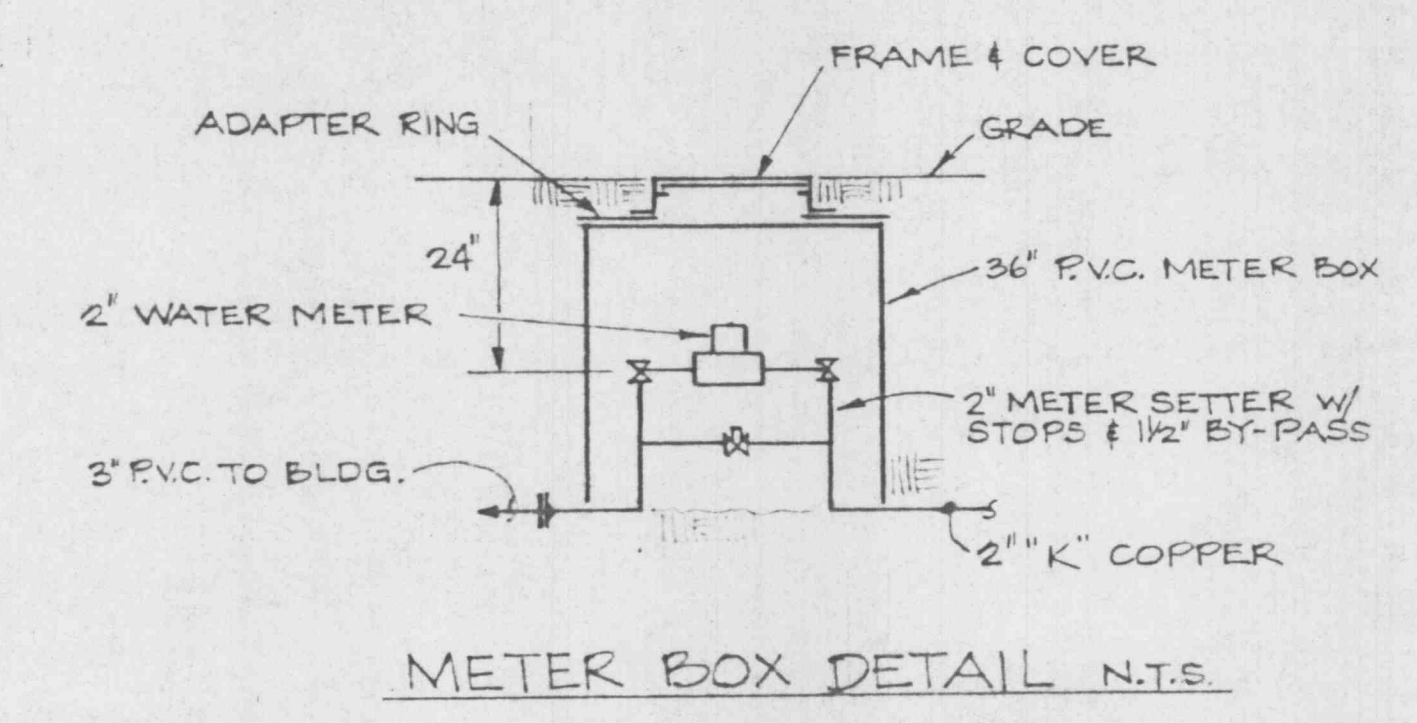
Prj #
 Dtc: 11-14-97
 Sheet Contents
SITE PLAN

Sheet No. **P-1**

The Wischmeyer Architects, Inc. 1977(c)



- WATER SERVICE MATERIALS:**
- 2" TYPE "K" COPPER
 - 2 1/2" TYPE "K" COPPER
 - 3" CL. 200 BELL RING PVC.
 - 6, 8" CL. 200 BELL RING PVC.
- TRENCH BACKFILL:**
 1" CLEAN NON-TAMPER ROCK



MISSOURI STATE HIGHWAY K (VARIABLE WIDTH)

MANHOLE
 T=570.48
 FL=564.57

LOT B
 RIDGETOP PLAZA
 PB.33 PGS.248

SITE PLAN
 1/30"=1'-0"
 N
 E
 S
 W