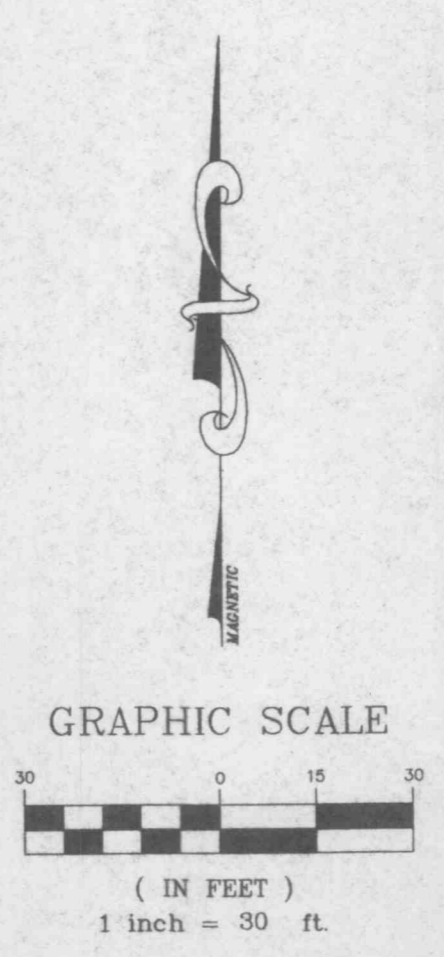
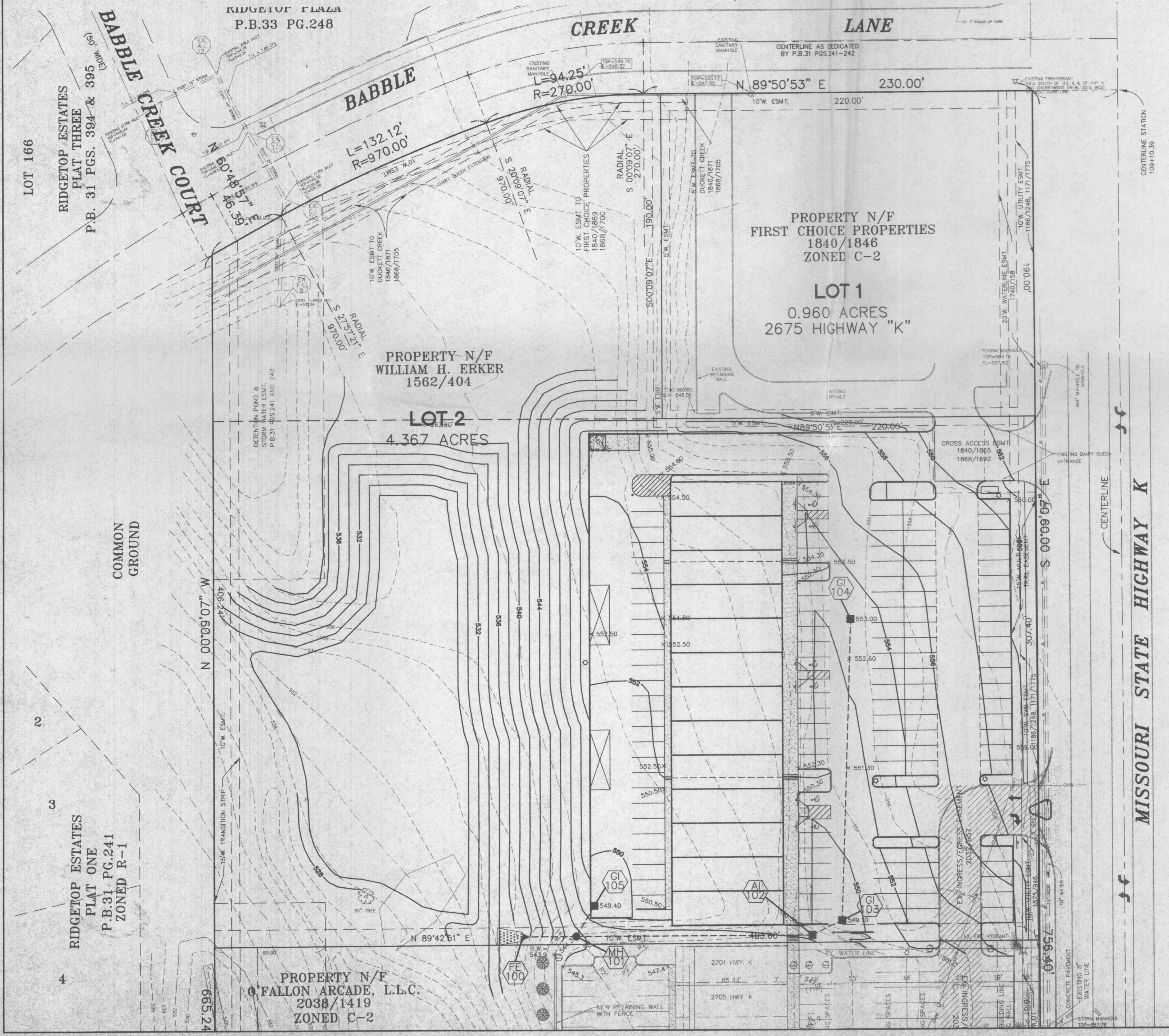


A GRADING PLAN FOR
BABBLE CREEK PLAZA
 A TRACT OF LAND BEING PART
 OF U.S. SURVEY 3180
 TOWNSHIP 46 NORTH, RANGE 3 EAST
 OF THE FIFTH PRINCIPAL MERIDIAN
 CITY OF O'FALLON, ST. CHARLES COUNTY, MISSOURI



GRADING QUANTITIES:
 8,553 C.Y. CUT
 14,068 C.Y. FILL (INCLUDES 15% SHRINKAGE)
 5,515 C.Y. SHORT

THE ABOVE GRADING QUANTITY IS APPROXIMATE ONLY, NOT FOR BIDDING PURPOSES. CONTRACTOR SHALL VERIFY QUANTITIES PRIOR TO CONSTRUCTION.

PREPARED FOR:
 STEVE NOLES
 11527 OLIVE STREET RD.
 ST. LOUIS, MO 63141

DISCLAIMER OF RESPONSIBILITY
 I hereby certify that the documents in this sheet, and I hereby declare my ability for all other Drawings, Specifications, Estimates, Reports or other documents instruments relating to or intended to for any part or parts of the architect's engineering project or survey.

REVISIONS

NO.	DATE	DESCRIPTION

BAT
 ENGINEERING
 PLANNING
 SURVEYING
 1052 South Cloverleaf
 St. Peters, MO. 63376
 314-928-5552
 FAX 928-1718

3-10-99
 DATE
 97-9423A
 PROJECT NUMBER
 2 OF 4
 SHEET OF
 9423ACON.DWG
 FILE NAME
 GJD RLF
 DRAWN CHECKED