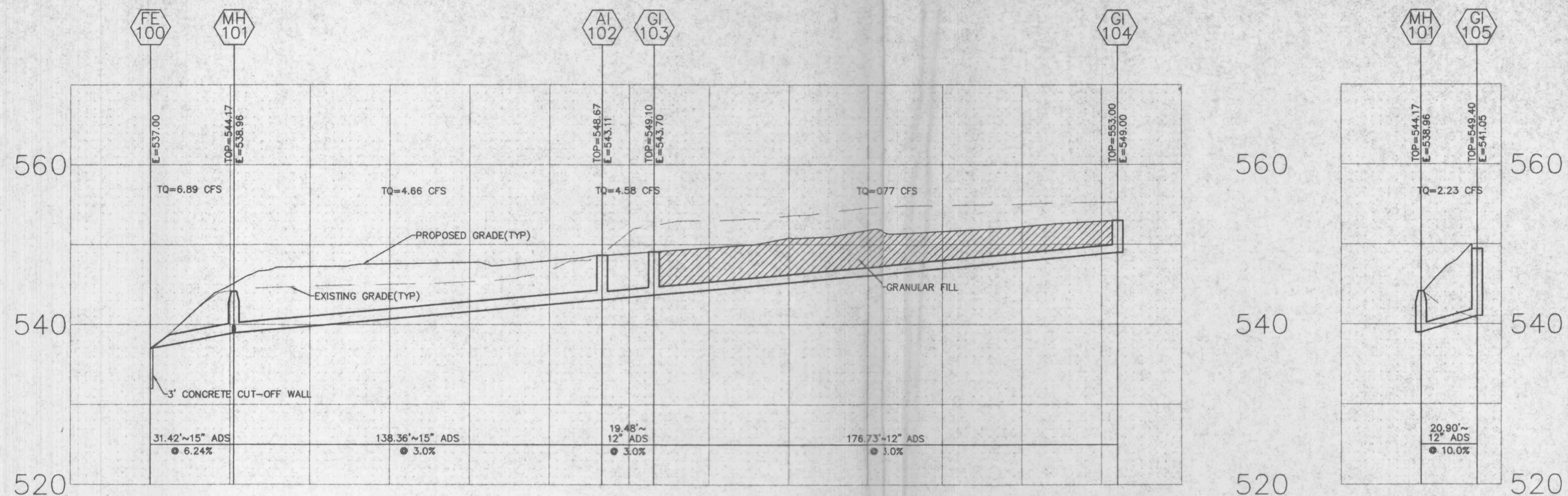
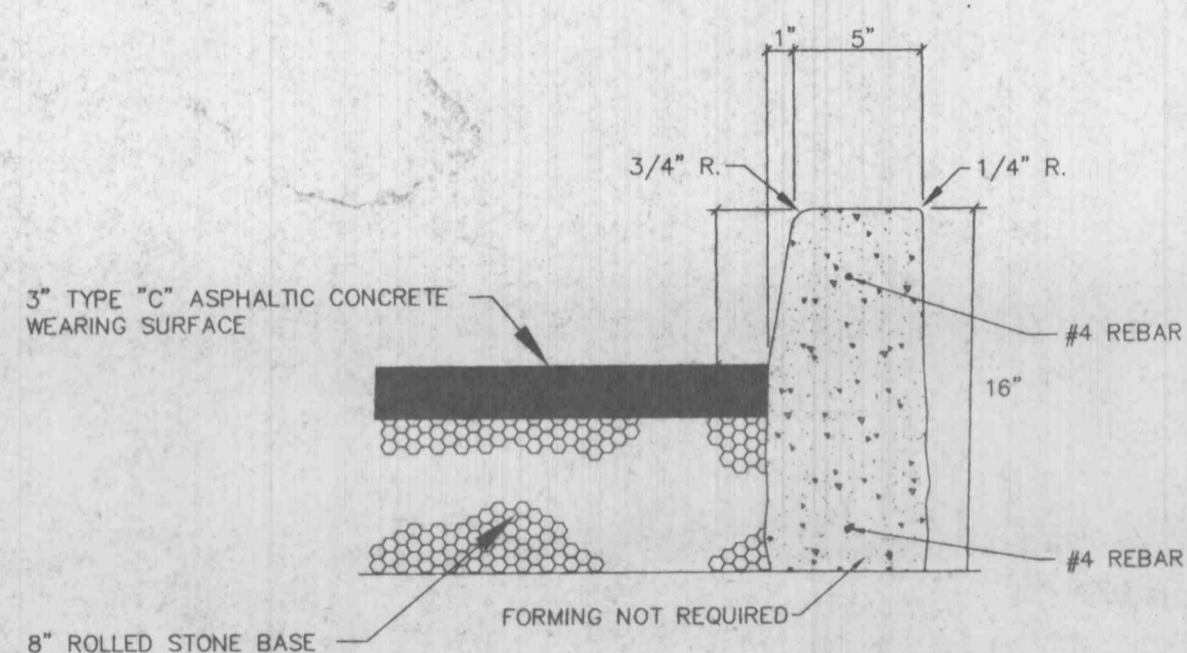


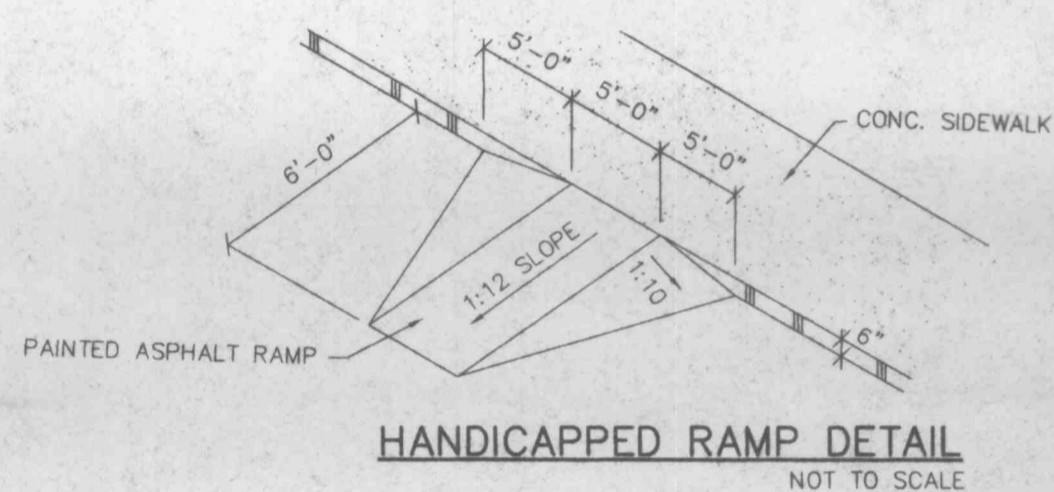
PRIVATE STORM SEWER PROFILES



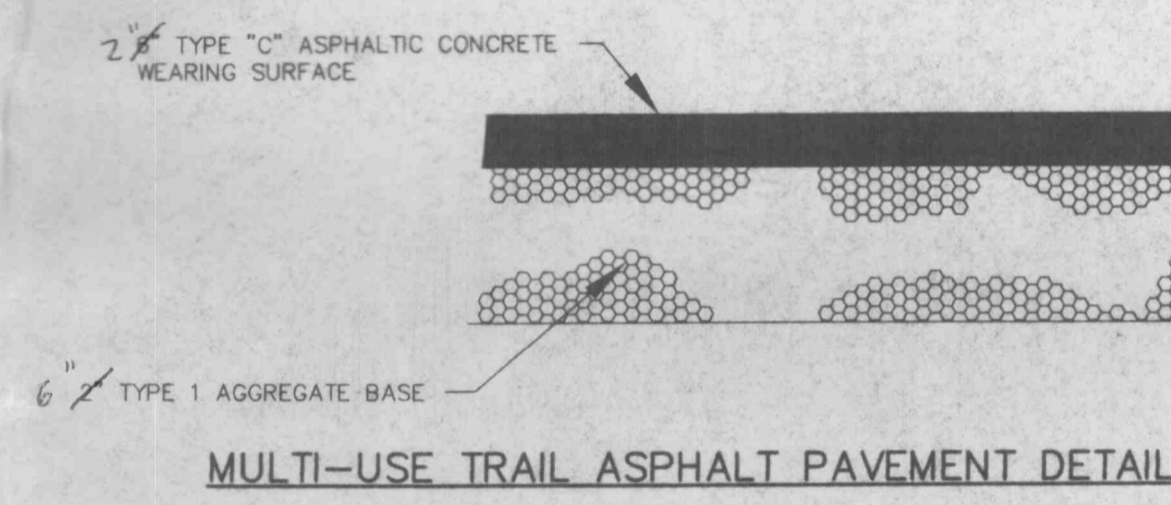
HORIZONTAL SCALE: 1"=30'
VERTICAL SCALE: 1"=10'



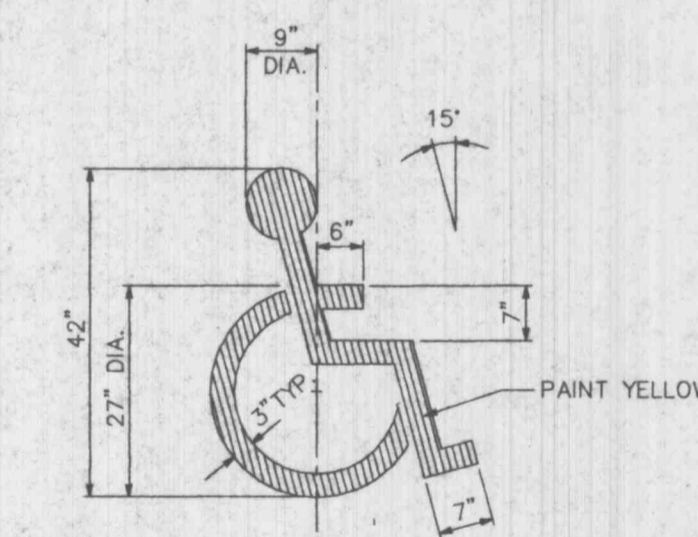
TYPE "S" CONCRETE CURB
NOT TO SCALE



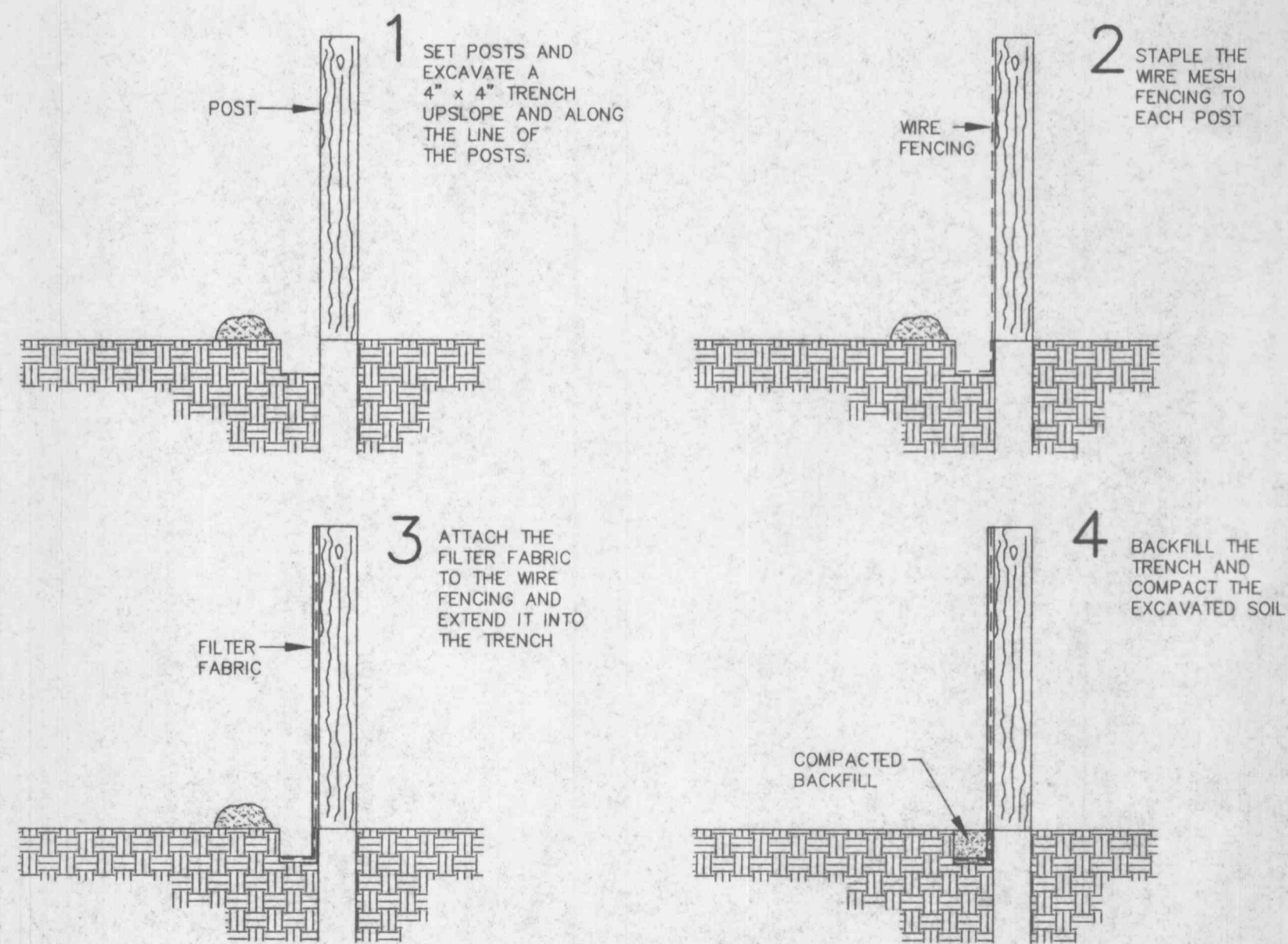
HANDICAPPED RAMP DETAIL
NOT TO SCALE



MULTI-USE TRAIL ASPHALT PAVEMENT DETAIL
NOT TO SCALE



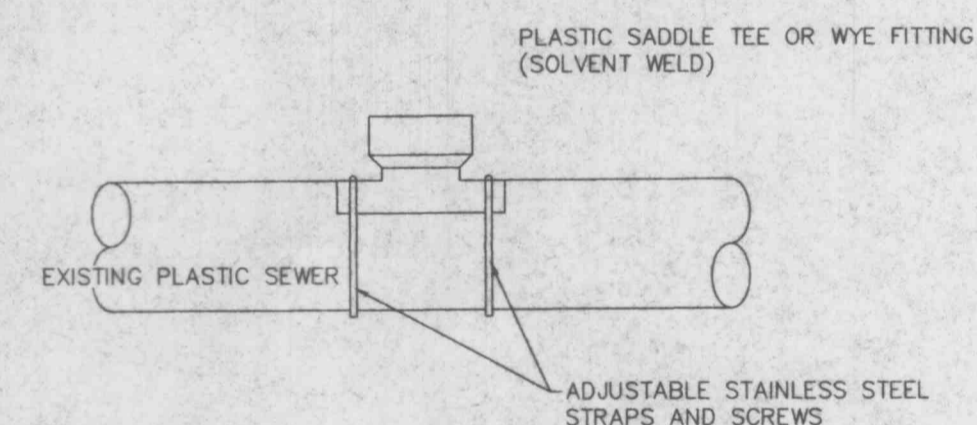
PAINTED HANDICAPPED
PARKING SYMBOL
NOT TO SCALE



1. FILTER BARRIERS SHALL BE INSPECTED IMMEDIATELY AFTER EACH RAINFALL AND AT LEAST DAILY DURING PROLONGED RAINFALL. ANY REQUIRED REPAIRS SHALL BE MADE IMMEDIATELY.
2. SHOULD THE FABRIC DECOMPOSE OR BECOME INEFFECTIVE PRIOR TO THE END OF THE EXPECTED USABLE LIFE AND THE BARRIER STILL BE NECESSARY, THE FABRIC SHALL BE REPLACED PROMPTLY.
3. SEDIMENT DEPOSITS SHOULD BE REMOVED AFTER EACH STORM EVENT. THEY MUST BE REMOVED WHEN DEPOSITS REACH APPROXIMATELY HALF THE HEIGHT OF THE BARRIER.
4. ANY SEDIMENT DEPOSITS REMAINING IN PLACE AFTER THE SILT FENCE OR FILTER BARRIER IS NO LONGER REQUIRED SHALL BE DRESSED TO CONFORM WITH THE EXISTING GRADE, PREPARED AND SEDDED.



SILTATION FENCE DETAIL

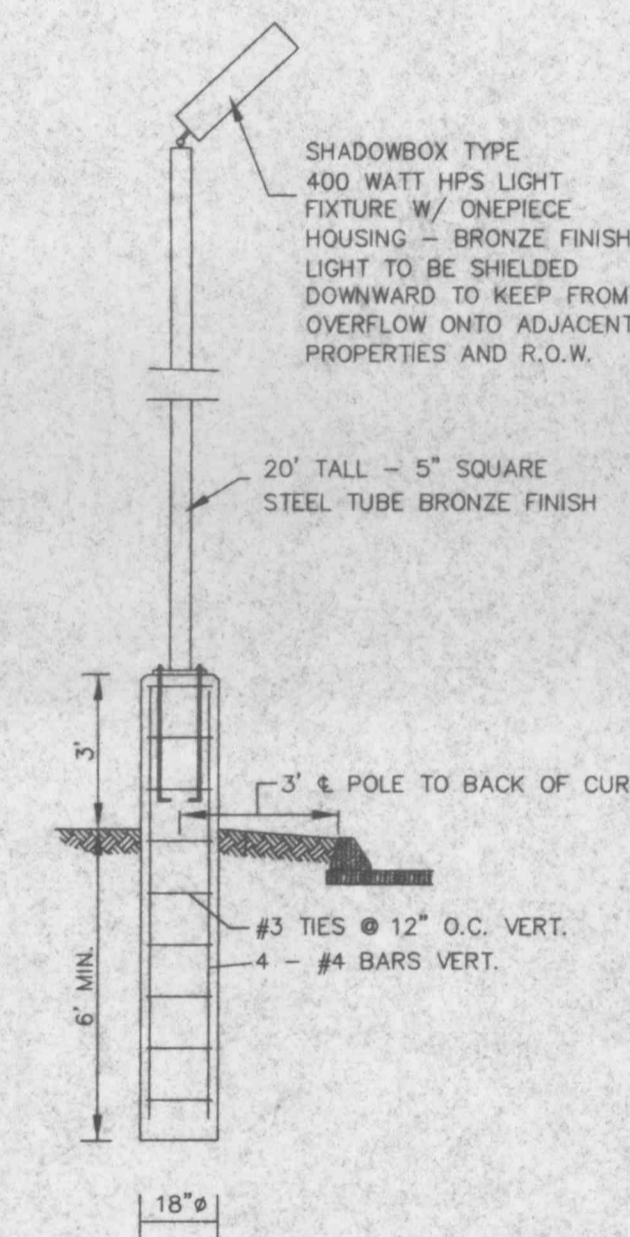


WHEN A CONNECTION TO A PLASTIC PIPE IS ALLOWED AND A CONNECTION IS LARGER THAN 6" IN DIAMETER, A SOLVENT WELD WYE OR TEE FITTING OF A SIMILAR MATERIAL MUST BE USED. (EXAMPLE: 10" X 8").

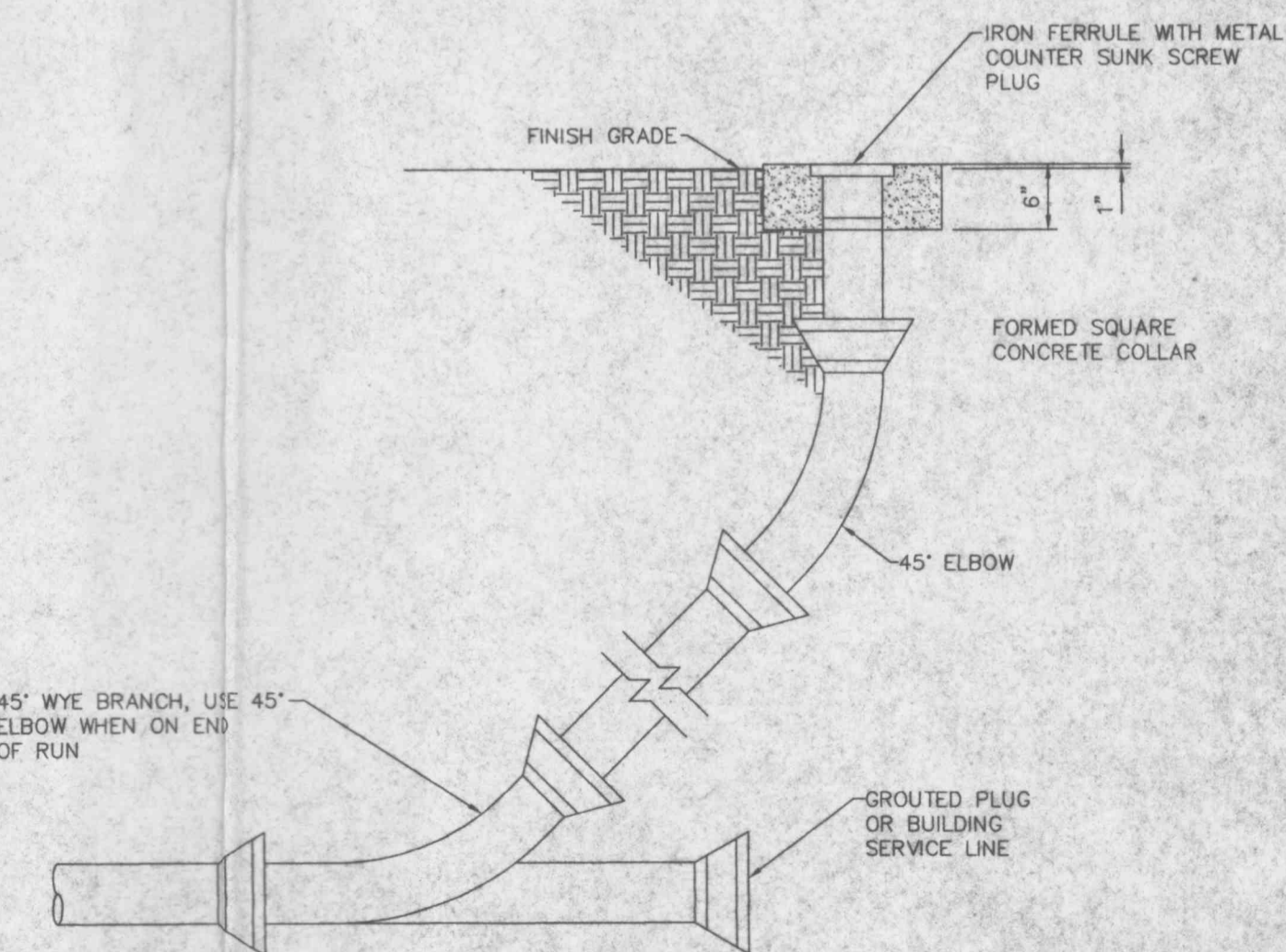
THIS IS ACCOMPLISHED BY CAREFULLY CUTTING A HOLE WITH A SAW IN THE MAIN AT THE REQUIRED LOCATION AFTER CUTTING AND SHAPING THE HOLE TO THE SIZE OF THE FITTING. THE FOLLOWING STEPS SHOULD BE TAKEN:

1. CLEAN AND DRY BOTH INSIDE SADDLE WYE SURFACE AND PIPE SURFACE TO BE SOLVENT CEMENTED.
2. IMPORTANT: APPLY A LIBERAL, HEAVY COAT OF ONE-STEP SOLVENT CEMENT TO THE INSIDE SURFACE OF THE SADDLE WYE AND TO THE EXTERIOR WELDING SURFACE TO THE PIPE.
3. WITHOUT DELAY, MATE THE SURFACES AND STRAP DOWN TIGHTLY. A BEAD OF SOLVENT SHOULD APPEAR AFTER THE SADDLE HAS BEEN STRAPPED DOWN TIGHTLY.
4. USING A RAG OR PAPER TOWEL, Wipe BEAD AND ANY EXCESS SOLVENT CEMENT OFF PIPE AND SADDLE.
5. ALLOW 30-60 MINUTES FOR SET-UP TIME BEFORE BACKFILLING. CURE TIME DEPENDS ON SIZE FIT OF MATERIALS BEING INSTALLED AND VARIOUS COLD DAMP CONDITIONS.
6. DISCARD OLD SOLVENT IF IT BECOME JELLED OR LUMPY.
7. A CLEAN, DRY BEDDING MATERIAL IS REQUIRED AROUND THE COMPLETED CONNECTION BEFORE BACKFILLING. THE BEDDING MATERIAL SHOULD BE ONE OF THE FOLLOWING:

- A. M.S.D. #1 BEDDING
- B. 1 TO 3 CEMENT TO SAND MIX
- C. "PRE-MIX" CONCRETE



LIGHT POLE & BASE
NOT TO SCALE



SEWER CLEANOUT (DUCKETT CREEK)
NOT TO SCALE

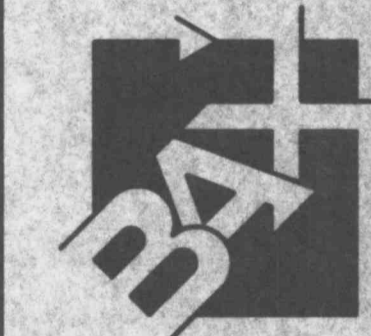
PREPARED FOR:
STEVE NOLES
11527 OLIVE STREET RD.
ST. LOUIS, MO 63141
(314) 997-3292

DISCLAIMER OF RESPONSIBILITY
I hereby specify that the documents intended to be authorized by my seal are limited to this sheet, and I hereby disclaim any responsibility for all other Drawings, Specifications, Estimates, Reports or other documents or instruments, existing, or intended to be used for any part or parts of the architectural or engineering project or survey.

Copyright 1999
All Engineering Company, Inc.
All Rights Reserved.

REVISIONS

NO.	DATE	DESCRIPTION



ENGINEERING
PLANNING
SURVEYING

1052 South Cloverleaf Drive
St. Peters, MO. 63378-6445
314-928-5552
FAX 928-1718

3-10-99
DATE
97-9423A
PROJECT NUMBER
3 OF 4
SHEET OF
9423ACON.DWG
FILE NAME
GJD RLF
DRAWN CHECKED