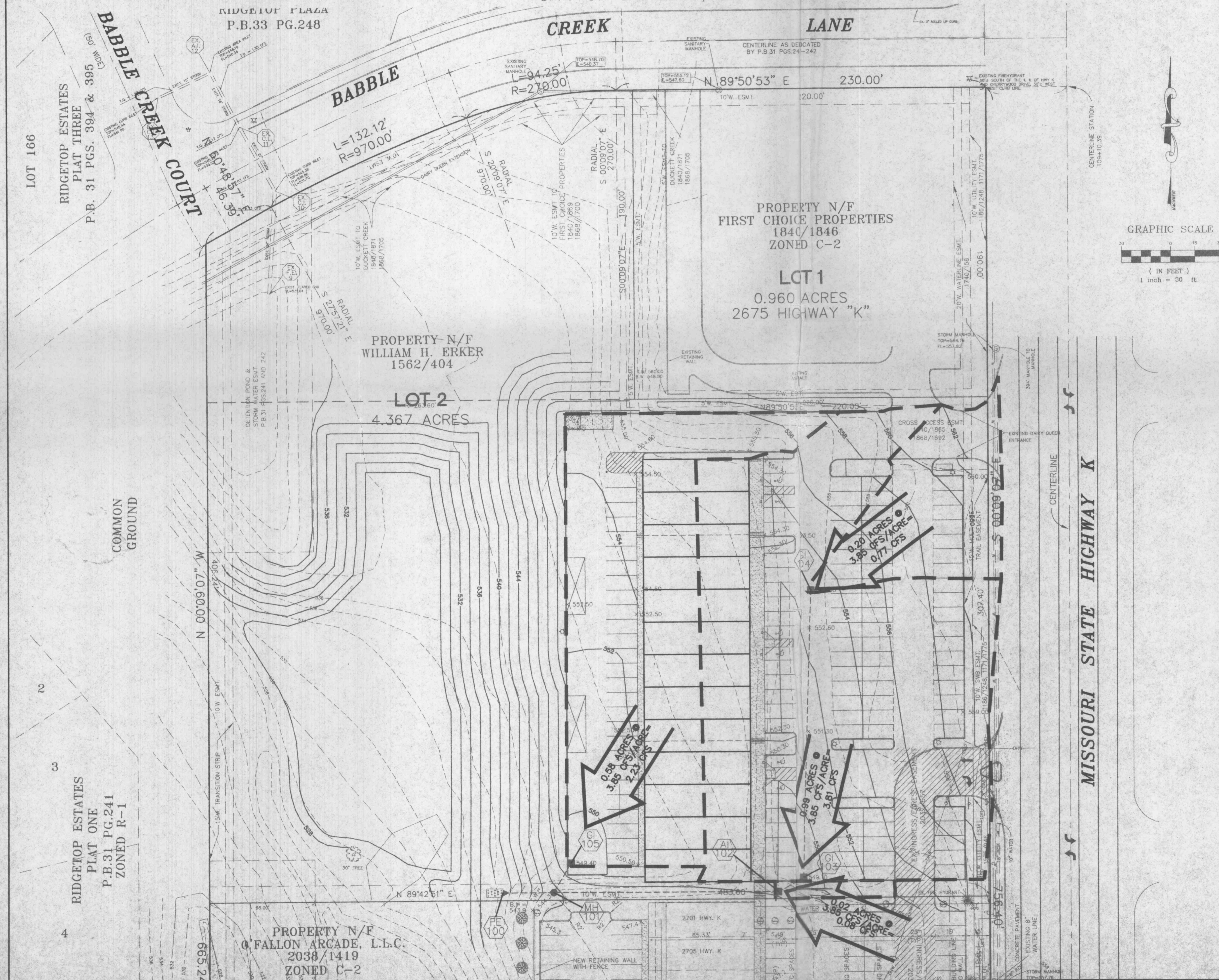


A DRAINAGE AREA MAP FOR
BABBLE CREEK PLAZA
 A TRACT OF LAND BEING PART
 PART OF U.S. SURVEY 3180
 TOWNSHIP 46 NORTH, RANGE 3 EAST
 OF THE FIFTH PRINCIPAL MERIDIAN
 CITY OF O'FALLON, ST. CHARLES COUNTY, MISSOURI



PREPARED FOR:
 STEVE NOLES
 11527 OLIVE STREET RD.
 ST. LOUIS, MO 63141
 (314) 997-3292

DISCLAIMER OF RESPONSIBILITY
 I hereby specify that the documents prepared
 to be submitted by my firm are limited to
 the extent, and I hereby disclaim any responsi-
 bility for all other Drawings, Specifications,
 Contracts, Reports or other documents or
 instruments relating to or intended to be used
 for any part or parts of the construction or
 engineering project or survey.

Copyright © 1999
 Rex Engineering Company, Inc.
 All Rights Reserved

REVISIONS

NO.	DATE	DESCRIPTION

374
 ENGINEERING
 PLANNING
 SURVEYING

1052 South Cloverleaf Drive
 St. Peters, MO, 63376-6445
 314-928-5552
 FAX 928-1718

3-10-99
 DATE
 97-9423A
 PROJECT NUMBER
 4 OF 4
 SHEET OF
 9423ACON.DWG
 FILE NAME
 GJD RLF
 DRAWN CHECKED

S:\DWG\9000\PL\US\9423ACON.dwg Fri Apr 09 16:25:36 1999 station 21 6.0