

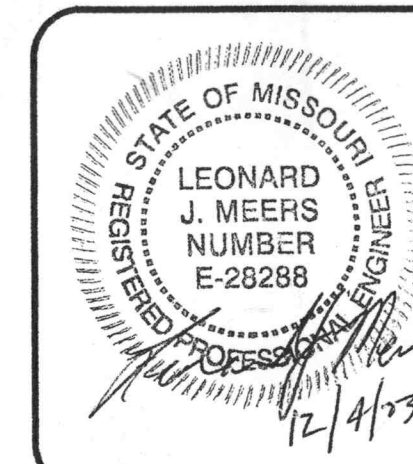
ALL PAVING TO BE IN ACCORDANCE WITH ST. CHARLES COUNTY STANDARDS AND SPECIFICATIONS EXCEPT AS MODIFIED BY THE CITY OF O'FALLON ORDINANCES.

NOTE: SIDEWALKS CURB RAMPS, RAMP AND ACCESSIBLE PARKING SPACES SHALL BE CONSTRUCTED IN ACCORDANCE WITH THE CURRENT APPROVED "AMERICAN WITH DISABILITIES ACT ACCESSIBILITY GUIDELINES" (ADAAG) ALONG WITH THE REQUIRED GRADES, CONSTRUCTION MATERIALS, SPECIFICATIONS, AND SIGNAGE. IF ANY CONFLICT OCCURS BETWEEN THE ABOVE INFORMATION AND THE PLANS, THE ADAAG GUIDELINES SHALL TAKE PRECEDENCE AND THE CONTRACTOR SHALL NOTIFY THE PROJECT ENGINEER.

11/20/03 PER CITY COMMENTS

J. R. GRIMES CONSULTING ENGINEERS, INC. AND THE UNDERSIGNED ENGINEER HAVE NO RESPONSIBILITY FOR SERVICES PROVIDED BY OTHERS TO IMPLEMENT THE IMPROVEMENTS SHOWN ON THIS PLAN AND ALL OTHER DRAWINGS WHERE THE UNDERSIGNED ENGINEER'S SEAL APPEARS. THE CONSTRUCTION MEANS AND METHODS ARE THE SOLE RESPONSIBILITY OF THE OWNER AND CONTRACTOR. J. R. GRIMES CONSULTING ENGINEERS, INC. HAS NO RESPONSIBILITY TO VERIFY FINAL IMPROVEMENTS AS SHOWN ON THIS PLAN UNLESS SPECIFICALLY ENGAGED AND AUTHORIZED TO DO SO BY THE OWNER OR CONTRACTOR.

PLANNING & ZONING #: 4703

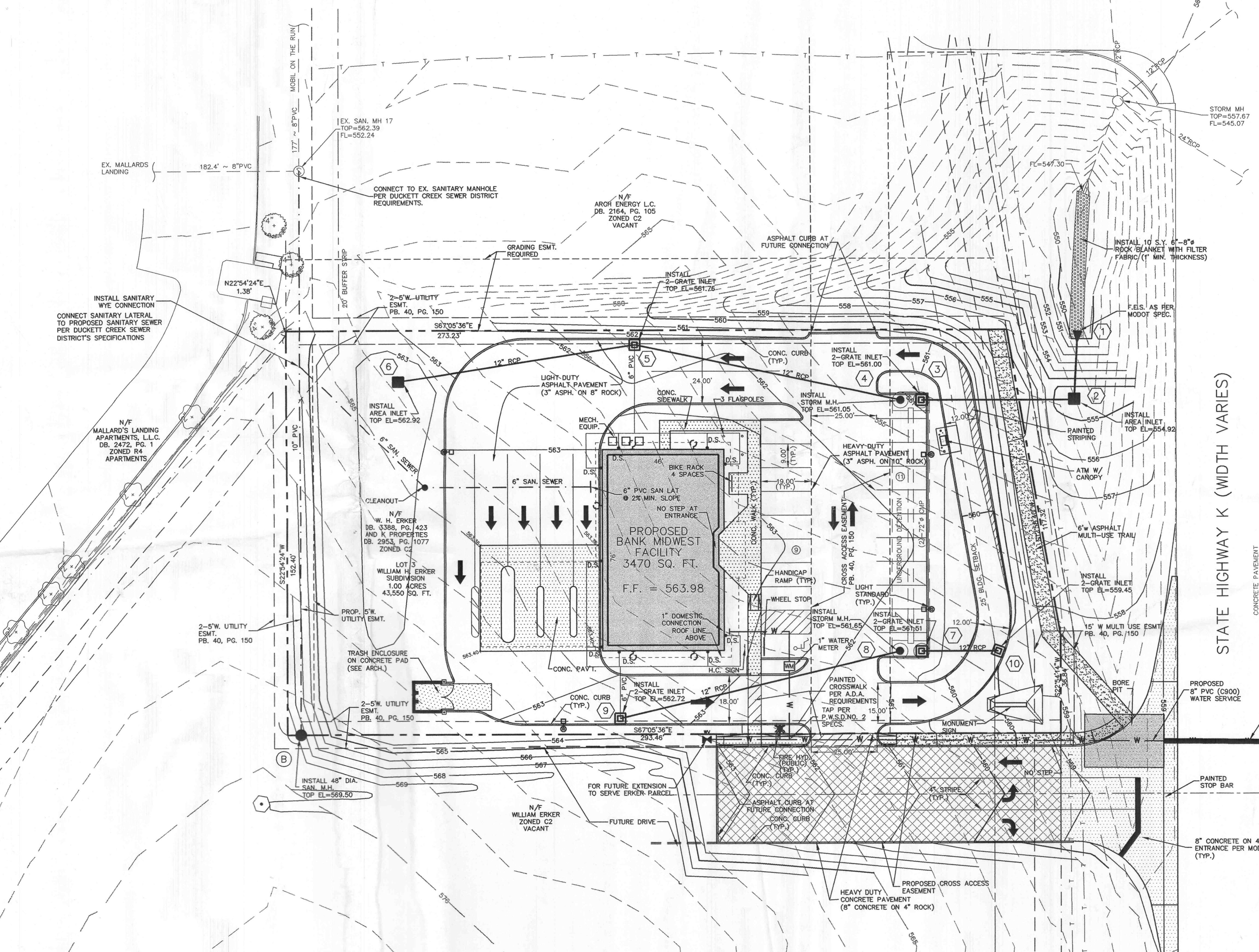


BANK MIDWEST SITE PLAN

J. R. GRIMES
CONSULTING ENGINEERS, INC.

12300 OLD TESSON ROAD
SUITE 3000
ST. LOUIS, MO. 63128
PH. (314) 849-6100
FAX (314) 849-6010
E-MAIL jrgeng@inlink.com

| | | | | | |
|-----------|----------|-------------|----------|-------------|--------|
| DRAWN BY: | DATE: | CHECKED BY: | DATE: | JOB NUMBER: | SHEET: |
| GJG | 10/28/03 | LJM | 10/28/03 | 1132 | C2 |



PREPARED FOR:
AEDIS, INC.
6317 CLAYTON ROAD
CLAYTON, MO 63117
PH: (314) 862-1101
FAX: (314) 862-8001

J:\1132\PLANS\002-SITE.dwg Tue Dec 02 14:42:20 2003 GREG JS