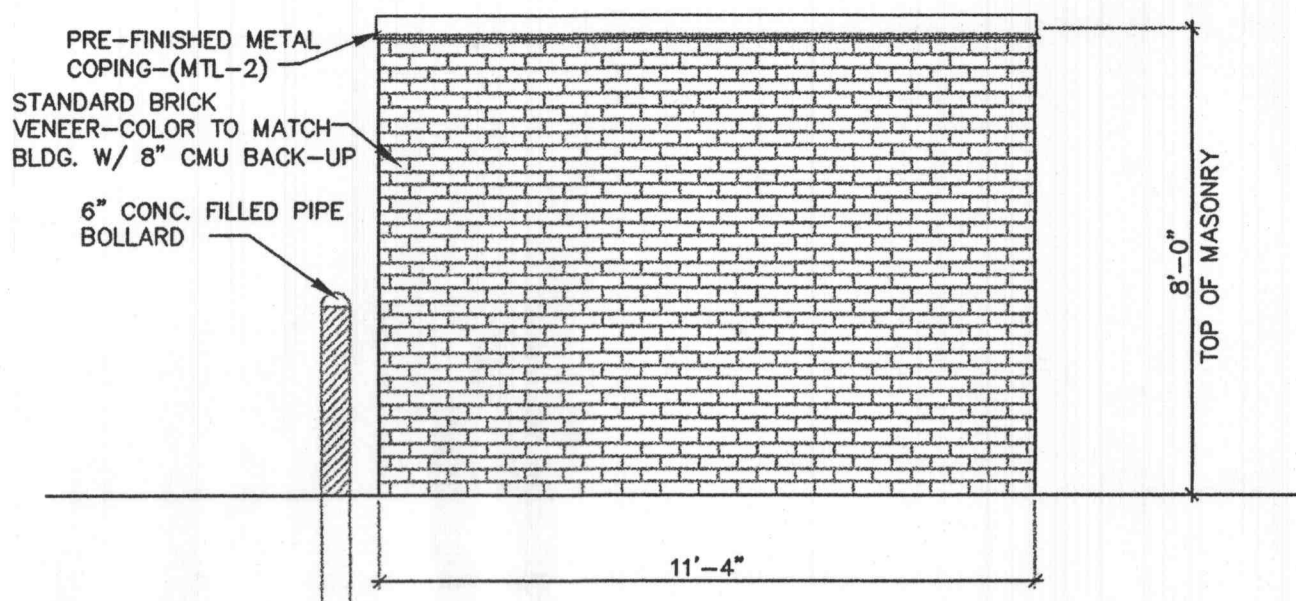
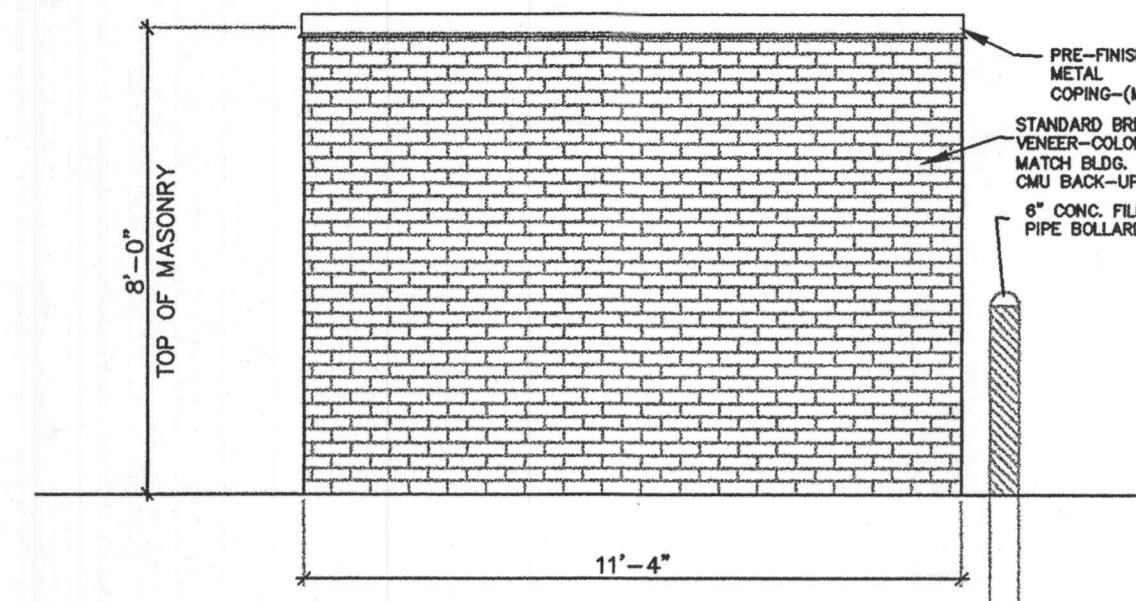


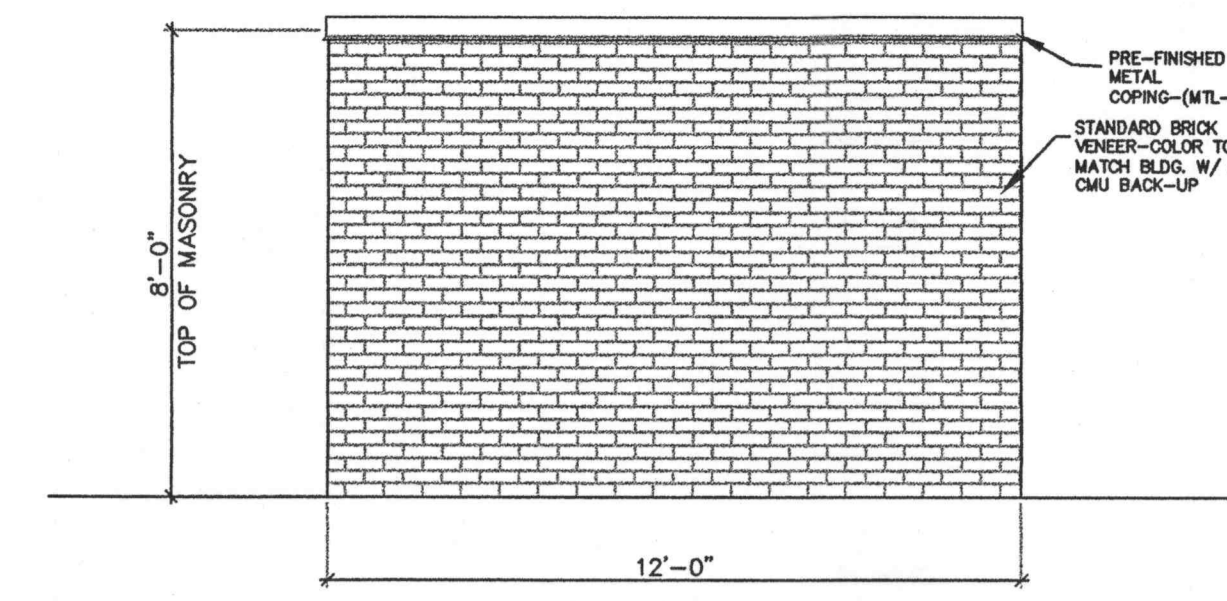
**TRASH ENCLOSURE GATE ELEVATION**



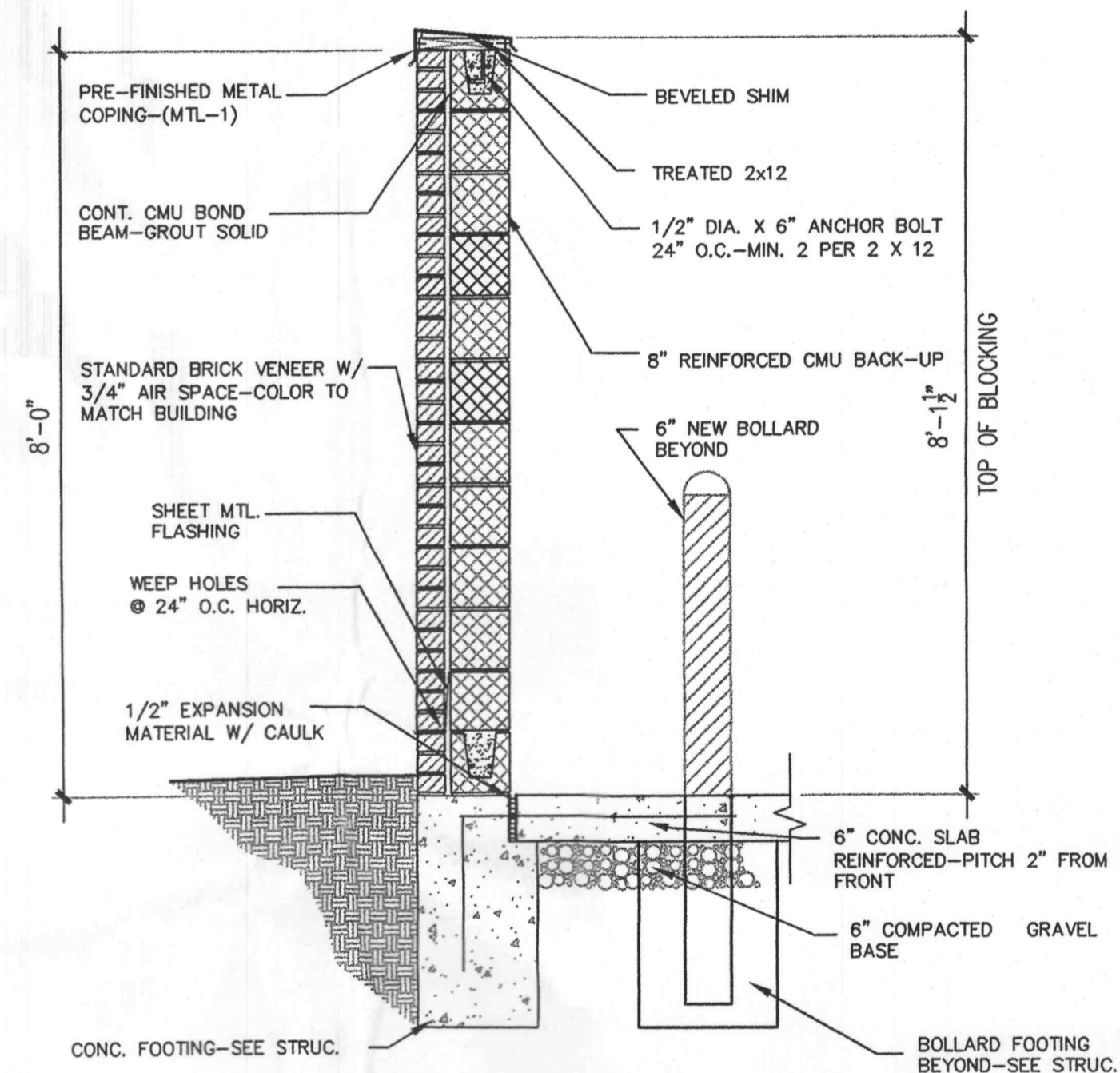
**TRASH ENCLOSURE SIDE ELEVATION**



**TRASH ENCLOSURE SIDE ELEVATION**



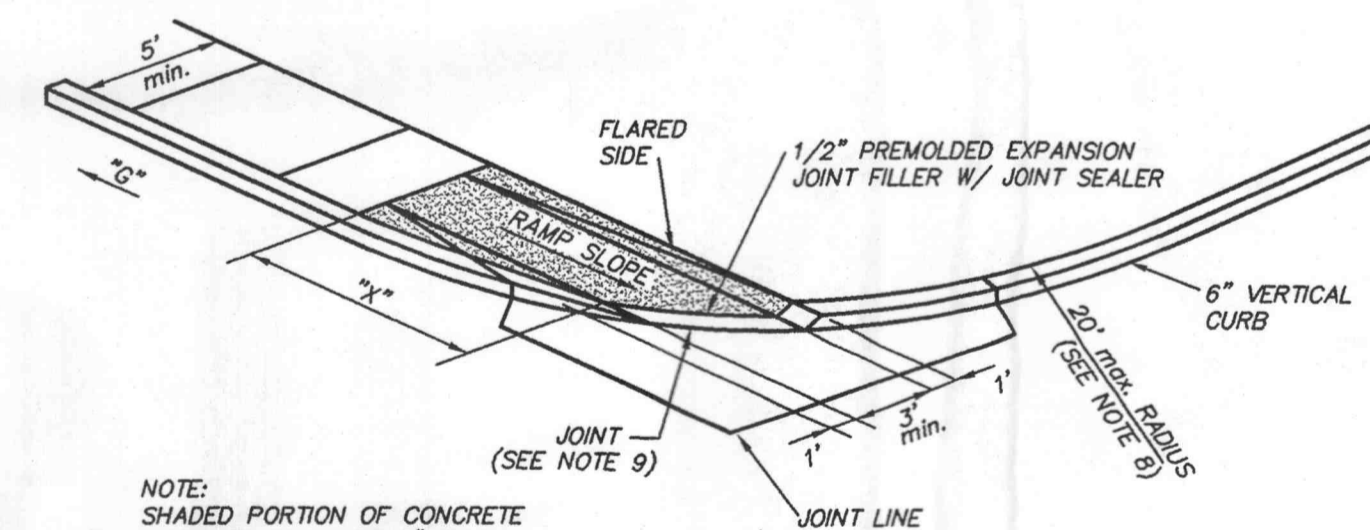
**TRASH ENCLOSURE REAR ELEVATION**



**TRASH ENCL. WALL SEC.**

"G" GRADE ALONG CURB (%)	"X" MIN. LENGTH OF RAMP SLOPE (L.F.)
NEGATIVE (-) VALUES	6
0 TO +1	7
+1.01 TO +2	8
+2.01 TO +3	10
+3.01 TO +4	12
GREATER THAN +4	15

NOTE: POSITIVE (+) "G" - PROCEEDING AWAY FROM INTERSECTION AND UP A GRADE.  
 NEGATIVE (-) "G" - PROCEEDING AWAY FROM INTERSECTION AND DOWN A GRADE.

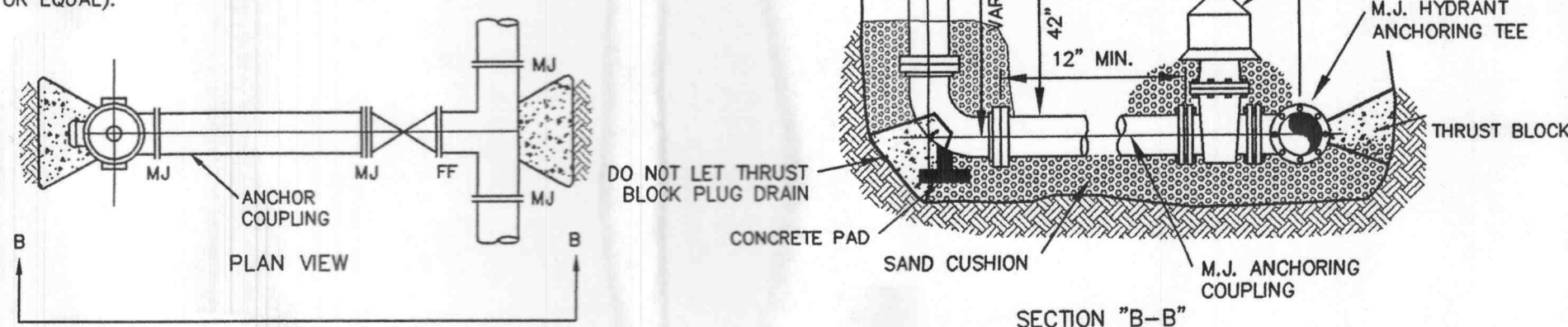


**STRAIGHT CURB RAMP (TYPE 1)**

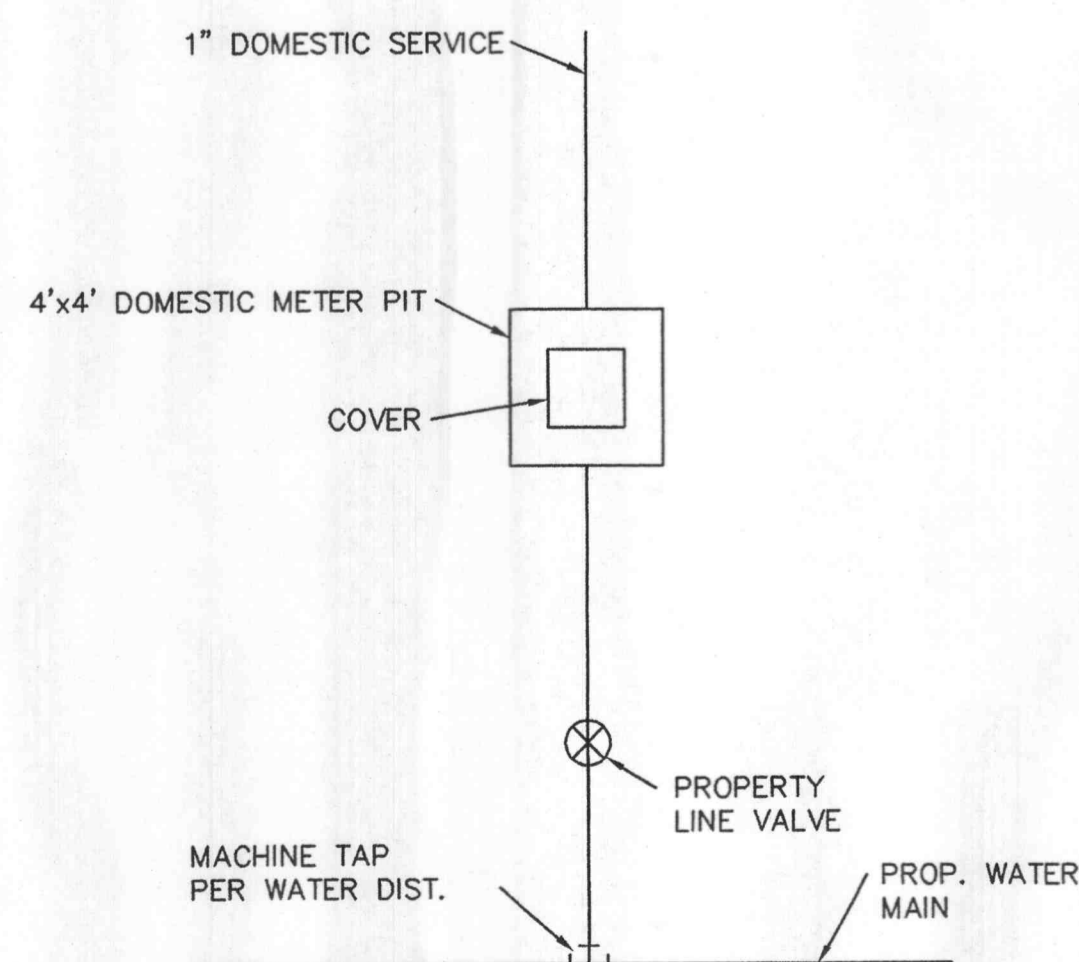
- DO NOT SCALE DRAWING. FOLLOW DIMENSIONS.
- SIDEWALKS AND SIDEWALK CURB RAMPS SHALL BE CONSTRUCTED IN ACCORDANCE WITH THESE DETAILS AND THE CURRENT APPROVED "AMERICANS WITH DISABILITIES ACT ACCESSIBILITY GUIDELINES" (ADAAG).
- PROVIDE A LANDING AT THE TOP OF EACH STRAIGHT RAMP WHEN THE GRADE ALONG CURB ("G") IS GREATER THAN +2% AND LESS THAN +7%. FOR OTHER VALUES OF "G", INCLUDING ALL NEGATIVE (-) VALUES, NO LANDING IS REQUIRED.
- MINIMUM SIDEWALK WIDTH ALONG 6" VERTICAL CURB SHALL BE 5 FEET. MINIMUM SIDEWALK WIDTH ALONG 3" ROLLED CURB SHALL BE 4 FEET.
- MAXIMUM SIDEWALK CROSS SLOPE 0.02'/FT.
- ALL SIDEWALK SECTIONS SHALL BE 4" THICK, EXCEPT WHERE INDICATED OTHERWISE BY SHADED PORTIONS SHOWN ON DETAILS. ALL SIDEWALK SECTIONS AND CURB RAMPS, REGARDLESS OF THICKNESS, SHALL BE PAID FOR AS "CONCRETE SIDEWALK".
- WHERE CURB RAMP MEETS PAVEMENT, BULLNOSE WILL NOT BE PERMITTED.
- CONSTRUCT A DIAGONAL RAMP WHEN THE MAXIMUM CORNER RADIUS ALLOWED FOR A STRAIGHT RAMP IS EXCEEDED.
- IF INTEGRAL CONCRETE CURB IS CONSTRUCTED STRIKE A DUMMY JOINT ACROSS BOTTOM OF RAMP AT CURB LINE. IF CONCRETE CURB IS DOWNELOD-ON, BLOCK OUT PAVEMENT TO PROVIDE FULL DEPTH CURB ACROSS RAMP FROM OUTER POINT OF CURB TAPER TO OUTER POINT OF CURB TAPER.
- FOR SIDEWALK LOCATIONS ON CUL-DE-SACS, REFER TO "PAVEMENT CONSTRUCTION DETAILS".
- FOR PAVEMENT LONGITUDINAL AND TRANSVERSE JOINTS AND DOWEL AND TIE BAR REQUIREMENTS AND DIMENSIONS, REFER TO THE PAVEMENT CONSTRUCTION DETAILS FOR "JOINTS AND CURBS", STANDARD DRAWING C502.03.
- FOR ROADWAY CROSS SLOPES, PAVEMENT TYPES, AND THICKNESSES, REFER TO "STANDARD TYPICAL SECTION".

FIRE HYDRANTS SHALL MEET THE FOLLOWING REQUIREMENTS:

- CENTERLINE OF THE 4 1/2 INCH HYDRANT OUTLET SHALL BE A MINIMUM OF 16 INCHES AND A MAXIMUM OF 36 INCHES ABOVE FINISH GRADE.
- THE TYPE AND DESIGN OF THE FIRE HYDRANT SHALL BE APPROVED, IF DIFFERENT THAN THE ALREADY APPROVED TYPE AND DESIGN THAT IS BEING USED BY THE LOCAL FIRE PROTECTION DISTRICT THE FIRE HYDRANT SHALL BE PROVIDED WITH TWO 2 1/2" HOSE NOZZLES AND ONE 4 1/2" PUMPER NOZZLE, ALL HAVING NATIONAL STANDARD HOSE THREADS. NOZZLES SHALL HAVE CAPS ATTACHED BY CHAINS. OPERATING NUTS SHALL BE ANWA STANDARD (PENTAGONAL, MEASURING 1 1/2" POINT TO FLAT). HYDRANT SHALL HAVE A 5 1/4" VALVE AND 6" BARREL.
- ALL PUBLIC FIRE HYDRANT BARRELS ARE TO BE PAINTED YELLOW. ALL FIRE HYDRANT BONNETS ARE TO BE PAINTED BASED ON THE GALLONS OF WATER PER MINUTE THAT THEY WILL FLOW. THESE COLORS ARE PER N.F.P.A.
  - A.) RED = 500 OR LESS GALLONS
  - B.) ORANGE = 501 TO 1000 GALLONS
  - C.) GREEN = 1001 TO 1500 GALLONS
  - D.) BLUE = 1501 GALLONS OR GREATER
- FIRE HYDRANTS SHALL BE SET BACK FROM THE CURB OF THE PAVEMENT, THE SET BACK SHALL NOT EXCEED 12 FEET.
- FIRE HYDRANTS SHALL NOT BE OBSTRUCTED BY PLANTINGS, BUSHES, TREES, SIGNS, LIGHT STANDARDS, FENCING, ETC. WITHIN 6 FEET OF ANY HYDRANT IN ALL DIRECTIONS.
- ALL PRIVATE FIRE HYDRANTS SHALL BE PAINTED ENTIRELY RED (PORTER 4119 OR EQUAL).



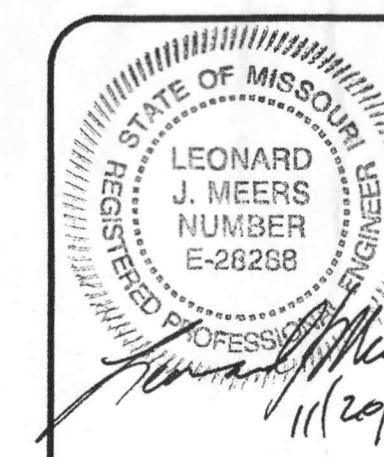
**FIRE HYDRANT DETAILS**



**WATER SERVICE SCHEMATIC**

PREPARED FOR:  
**AEDIS, INC.**  
 6317 CLAYTON ROAD  
 CLAYTON, MO 63117  
 PH: (314) 862-1101  
 FAX: (314) 862-8001

PLANNING & ZONING #: 4703



<b>BANK MIDWEST</b>	
<b>DETAILS</b>	
<b>J. R. GRIMES</b>	
<b>CONSULTING ENGINEERS, INC.</b>	
12300 OLD TESSON ROAD SUITE 3000 ST. LOUIS, MO. 63128 PH. (314) 849-6100 FAX (314) 849-6010 E-MAIL: jrgeng@link.com	
DRAWN BY: GJG	DATE: 10/28/03
CHECKED BY: LJM	DATE: 10/28/03
JOB NUMBER: 1132	SHEET: C6

11/20/03 PER CITY COMMENTS