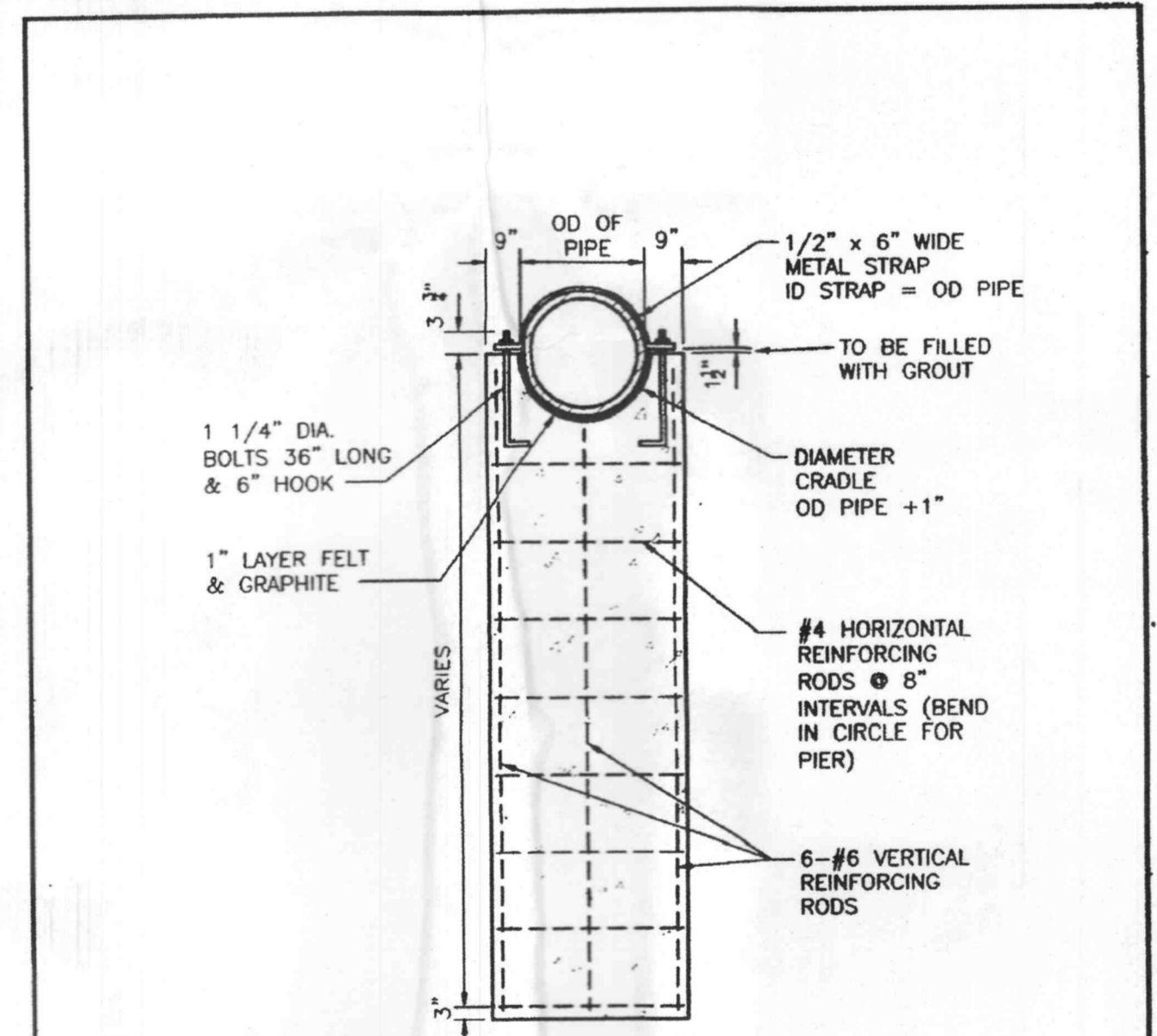


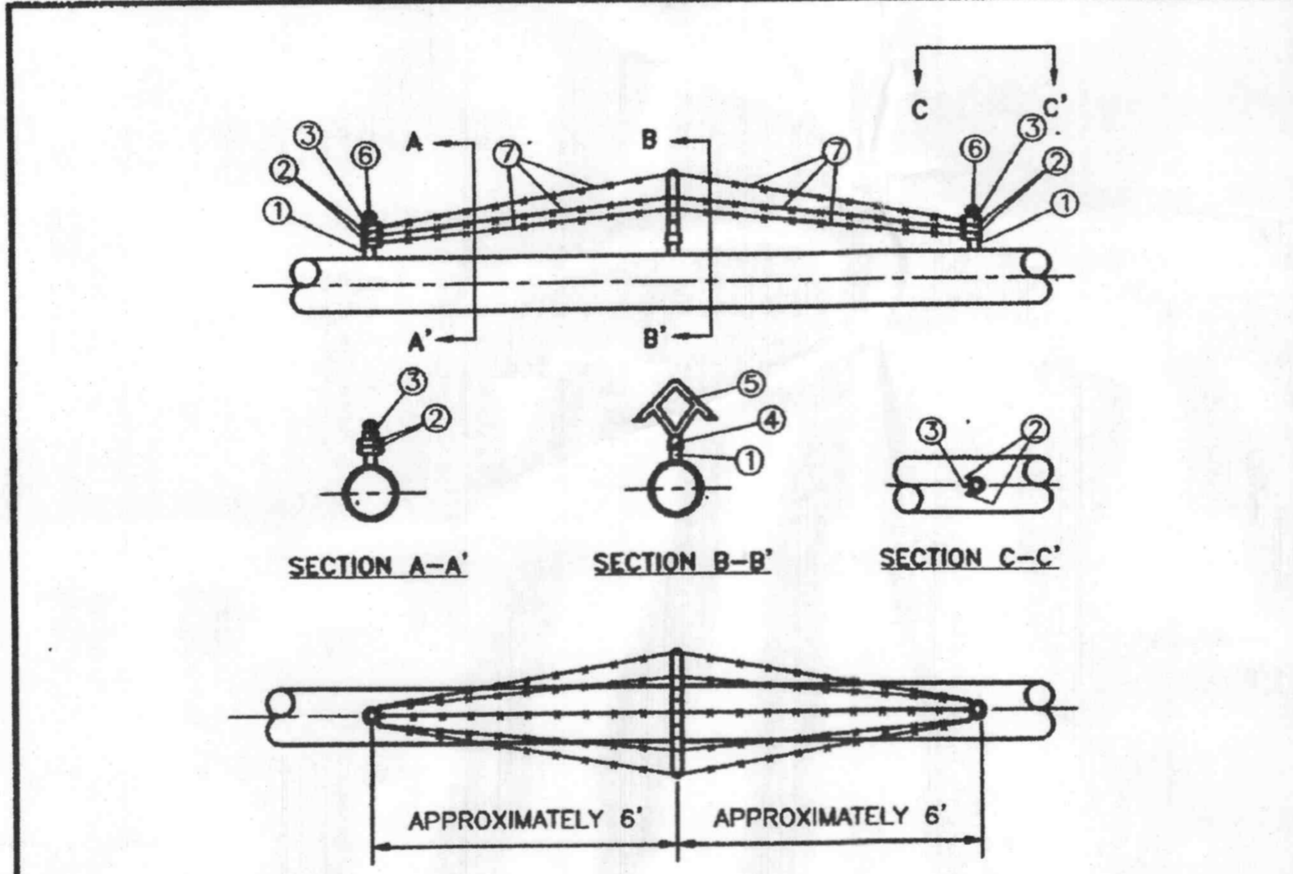
DUCKETT CREEK SANITARY DISTRICT
 AERIAL CROSSING
 CREEK CROSSING
 DETAIL

Drawn By: BSM	App By: KLA	Detail No.:
Checked By: MDOB	Date: 1-10-01	30A



DUCKETT CREEK SANITARY DISTRICT
 CONCRETE
 PIER
 DETAIL

Drawn By: BSM	App By: KLA	Detail No.:
Checked By: MDOB	Date: 1-9-01	30B



BILL OF MATERIAL

NO.	QTY	STK. NO.	SIZE	DESCRIPTION
1	6*	38290	1 1/2" x 5"	NIPPLE, STL. SCRBD.
2	8		1" OD, 7/8"	BRACE BARS, GALV.
3	4		1" OD, #6	BRACE BARS, GALV.
4	2		1" OD x 58U	UNIVERSAL BASE, GALV.
5	2		NORTHLAND #1	ARM, STL., GALV. W/BOLT
6	4			CAP, ACORN, GALV. W/SET SCREW
7	1**	59850	#4 POINT, 12" GAUGE	WIRE, BARBED, GALV.

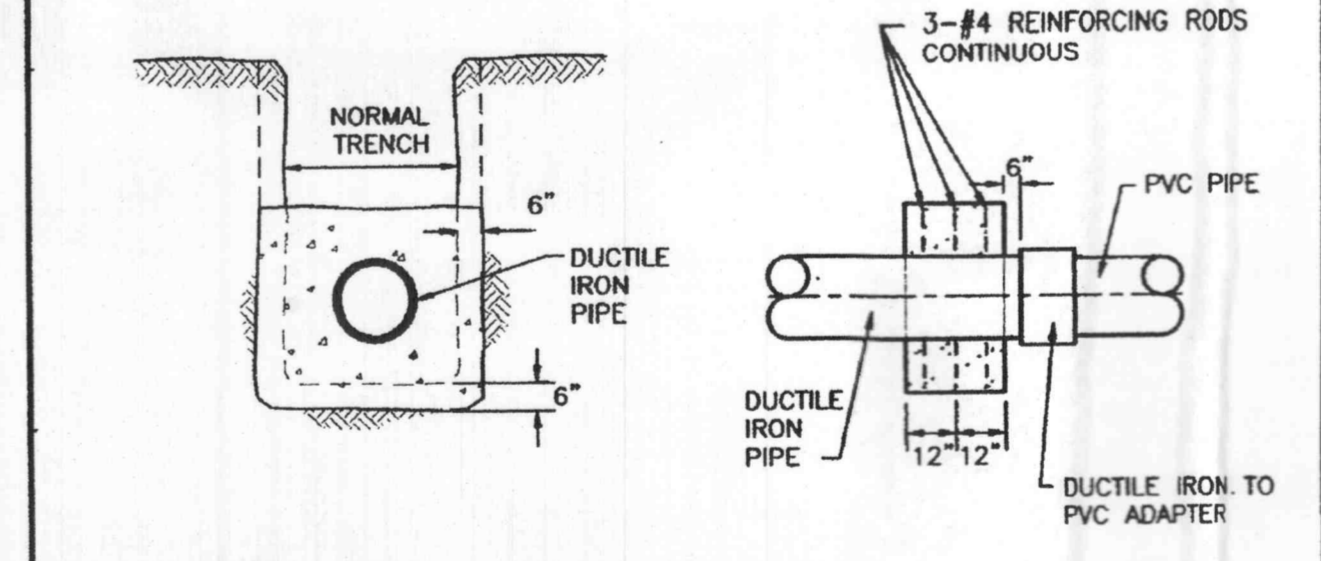
* 1 1/2" BARE PIPE ON JOB MAY BE SUBSTITUTED FOR 1 1/2" x 5" NIPPLE. SCREW THREADS NOT NECESSARY.
 ** CONTACT SUPERVISOR BEFORE ORDERING BARBED WIRE. BARBED WIRE SUPPLIED IN 1320' ROLLS ONLY, NOT RETURNABLE.

NOTES:
 1. "BILL OF MATERIALS" PROVIDES SUFFICIENT MATERIAL FOR TWO BARRICADES.
 2. LOCATION OF BARRICADES ON PIPING SYSTEM TO BE AS SPECIFIED ON APPROVED CONSTRUCTION DRAWINGS.
 3. TWO BARRICADES WILL BE REQUIRED, ONE AT EACH END OF THE CROSSING AS A DETERRENT AGAINST FOOT TRAFFIC. IN SOME INSTANCES ADDITIONAL BARRICADES MAY BE REQUIRED.
 4. COAT ANY EXPOSED PIPE WITH MASTIC, STOCK #51857.

DUCKETT CREEK SANITARY DISTRICT
 AERIAL CROSSING
 BARRIER
 DETAIL

Drawn By: BSM	App By: KLA	Detail No.:
Checked By: MDOB	Date: 1-9-01	30C

CROSSING NO.	TOTAL LENGTH OF PIPE L	LENGTH BETWEEN C OF PIPE SUPPORTS L	CARRIER PIPE OUTSIDE DIAMETER D	CARRIER PIPE WALL THICKNESS (IN.) T
1				
2				



DUCKETT CREEK SANITARY DISTRICT
 AERIAL CROSSING
 CONCRETE COLLAR
 DETAIL

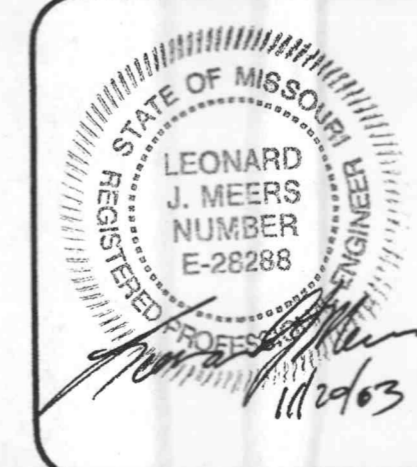
Drawn By: BSM	App By: KLA	Detail No.:
Checked By: MDOB	Date: 1-9-01	30D

J:\1132\PLANS\OS THRU C14-SANDET.dwg Thu Nov 20 13:26:27 2003 Greg_G

PREPARED FOR:
 AEDIS, INC.
 6317 CLAYTON ROAD
 CLAYTON, MO 63117
 PH: (314) 862-1101
 FAX: (314) 862-8001

△ 11/20/03 PER CITY COMMENTS

PLANNING & ZONING #: 4703



BANK MIDWEST	
SANITARY SEWER DETAILS	
J. R. GRIMES	
CONSULTING ENGINEERS, INC.	
12300 OLD TESSON ROAD SUITE 3000 ST. LOUIS, MO. 63128 PH. (314) 849-6100 FAX (314) 849-6010 E-MAIL: jrgeng@mlink.com	
DRAWN BY: GJG	DATE: 10/28/03
CHECKED BY: LJM	DATE: 10/28/03
JOB NUMBER: 1132	SHEET: C14