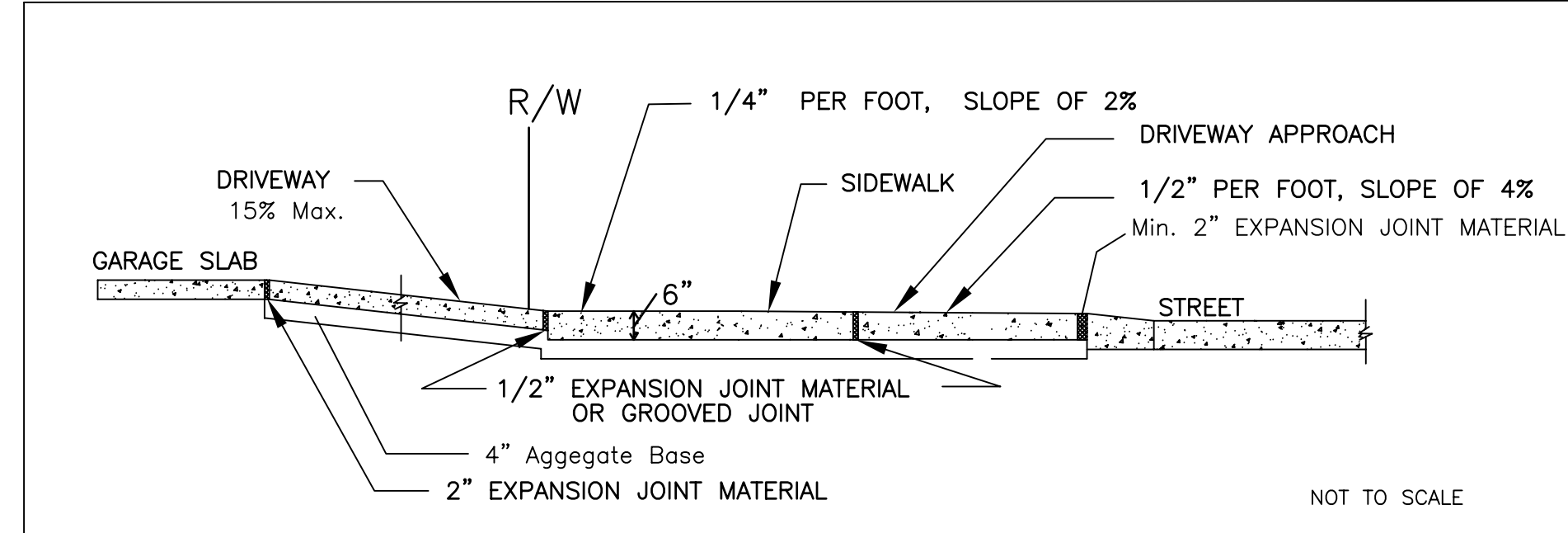
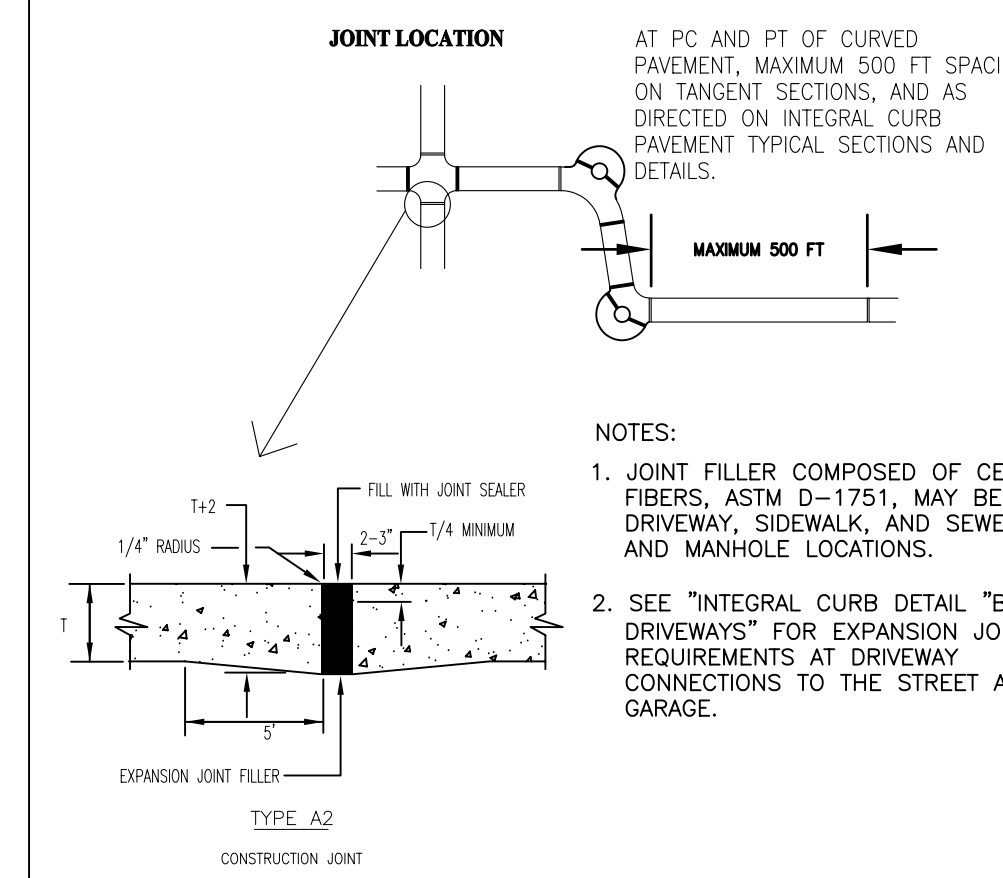


USER: Alison_Gauch TAB: C8.0
 DATE: June 14, 2021 - 4:05:34 PM
 DRAWING: S:\JOBS\Jobs2021\21-0036-000A\0001\C-Plan\Plan\Details\01_PAVL_DETAIL_21-0036.dwg



- NOTES:
- 1: All driveway entrances shall be six (6) inches P.C.C. in depth from the curb to the property line.
 - 2: All driveway approaches constructed in conjunction with sidewalk shall give the appearance that the sidewalk is continuous. That portion of the driveway approach that doubles as a sidewalk shall have a one-fourth (1/4) inch per foot cross slope the same as the abutting sidewalk.
 - 3: A two (2) inch expansion joint is required between the street and driveway approach. One (1) additional two (2) inch expansion joint is required between the garage floor and the termination of the driveway.

CITY OF O'FALLON
 ENGINEERING DEPARTMENT
 O'FALLON, MISSOURI
 Integral Curb Detail
 "B" at Driveway
 SECTION NO. 405.210 (G)



CITY OF O'FALLON
 ENGINEERING DEPARTMENT
 O'FALLON, MISSOURI
 PAVEMENT CONSTRUCTION
 DETAIL

NO	REVISION DESCRIPTION	DATE

DEVELOPER/OWNER:
BARRON SWIM SCHOOL
1158 LINDBERGH BUSINESS CT.
ST. LOUIS, MO 63123

THE PROFESSIONAL WHOSE SIGNATURE AND PERSONAL SEAL APPEAR HEREON HAS CONDUCTED THE SURVEY AND PREPARED THE PLANS AND SPECIFICATIONS AND IS NOT RESPONSIBLE FOR ANY ERRORS OR OMISSIONS IN THE PLANS, SPECIFICATIONS, ESTIMATES, REPORTS, OR OTHER DOCUMENTS OR INSTRUMENTS NOTED HEREON. THE USER OF THESE PLANS SHALL BE RESPONSIBLE FOR OBTAINING ALL NECESSARY PERMITS AND FOR ANY PART OR PARTS OF THE PROJECT TO WHICH THIS PAGE REFERS.

CIVIL ENGINEERS
 CORPORATE
 LICENSE
 CERTIFICATE
 #01185

ALISON MARIE GAUCH
 PROFESSIONAL SEAL
 NUMBER
 E-2010028831

ALISON MARIE GAUCH
 PROFESSIONAL SEAL
 NUMBER
 E-2010028831

06/14/2021

BARRON SWIM SCHOOL
 CALEDONIA CENTER, LOT 9A
 O'FALLON, MO 63388

CONSTRUCTION DETAILS

+ ST. CHARLES
 1520 S. Fifth Street
 Suite 307
 St. Charles, MO 63303
 636.979.1100
 www.stcharles.com

COLE
 CIVIL ENGINEERING / SURVEYING / PLANNING / LANDSCAPE ARCHITECTURE
 Civil & Architectural, Inc. is an Equal Opportunity Employer. M/F/V. All rights reserved. Registered Professional Engineer in the State of Missouri.

DESIGN/CALC BY: CAW
 DRAWN BY: CAW
 CHECKED BY: AMG
 DRAWING SCALE: AS SHOWN
 DATE: 06/14/21
 Job Number: 21-0036-000A
 Sheet Number: C8.0