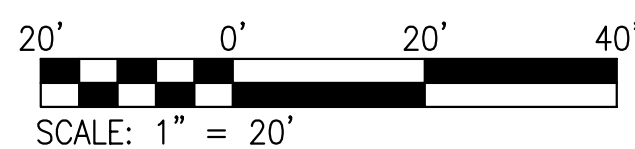


LANDSCAPE NOTES:

1. ALL PLANTS SHALL BE GROWN AND HARVESTED IN ACCORDANCE WITH THE AMERICAN STANDARD FOR NURSERY STOCK (ANSI Z60.1-2004)
2. TREE PLANTING SHALL COMPLY WITH THE INTERNATIONAL SOCIETY OF ARBORICULTURE (ISA) STANDARDS.
3. TREE PITS SHALL BE TESTED FOR WATER PERCOLATION. IF WATER DOES NOT DRAIN OUT OF TREE PIT WITHIN 24-HOURS, THE TREE SHALL BE MOVED OR DRAINAGE SHALL BE PROVIDED.
4. NATIVE SITE TOPSOIL IS TO BE PROTECTED FROM EROSION OR STOCKPILED.
5. NATIVE SITE TOPSOIL SHALL BE LABORATORY TESTED BY AN ACCREDITED LABORATORY AND AMENDED PER SAID LABORATORY'S RECOMMENDATIONS.
6. ALL AREAS NOT INDICATED WITH PLANTS TO BE TURF.



LANDSCAPE AND TREE REQUIREMENTS			
SECTION 402.170 B 2 a - PLANTING REQUIREMENTS WITHIN PARKING AND VEHICULAR USE AREAS			
REQUIREMENT	AREA / MEASUREMENT	REQ'D	PROVD
NOT LESS THAN 6% OF INTERIOR PARKING LOT SHALL BE LANDSCAPED. THE INTERIOR PARKING LOT SHALL BE CALCULATED BY MULTIPLYING THE NUMBER OF PARKING SPACES BY 270 S.F.	270 X 92 = 24840 24,840 - 6% = 1,490.4 S.F.	1,490.4	1,491
SECTION 402.180 BUFFERYARDS			
REQUIREMENT	AREA / MEASUREMENT	REQ'D	PROVD
PROPERTY ZONING - C2-GENERAL BUSINESS	NORTH BOUNDARY LINE - ABUTS HIGHWAY DD RIGHT-OF-WAY	NO BUFFER REQUIRED	NO BUFFER REQUIRED
	WEST BOUNDARY LINE - ABUTS C-2 SAME USE	NO BUFFER REQUIRED	NO BUFFER REQUIRED
	SOUTH BOUNDARY LINE - ABUTS RIGHT-OF-WAY AND C-2 SAME USE	NO BUFFER REQUIRED	NO BUFFER REQUIRED
	EAST BOUNDARY LINE - ABUTS HIGHWAY 40 RIGHT-OF-WAY	NO BUFFER REQUIRED	NO BUFFER REQUIRED
SECTION 402.090 COMMERCIAL ZONING DISTRICTS			
1 TREE FOR EVERY 40 FEET OF STREET FRONTAGE	HIGHWAY 40 FRONTAGE +/- 247/40' = 6.2 RUSH WAY FRONTAGE +/- 321/40' = 8.0	7 TREES 8 TREES	7 TREES 8 TREES

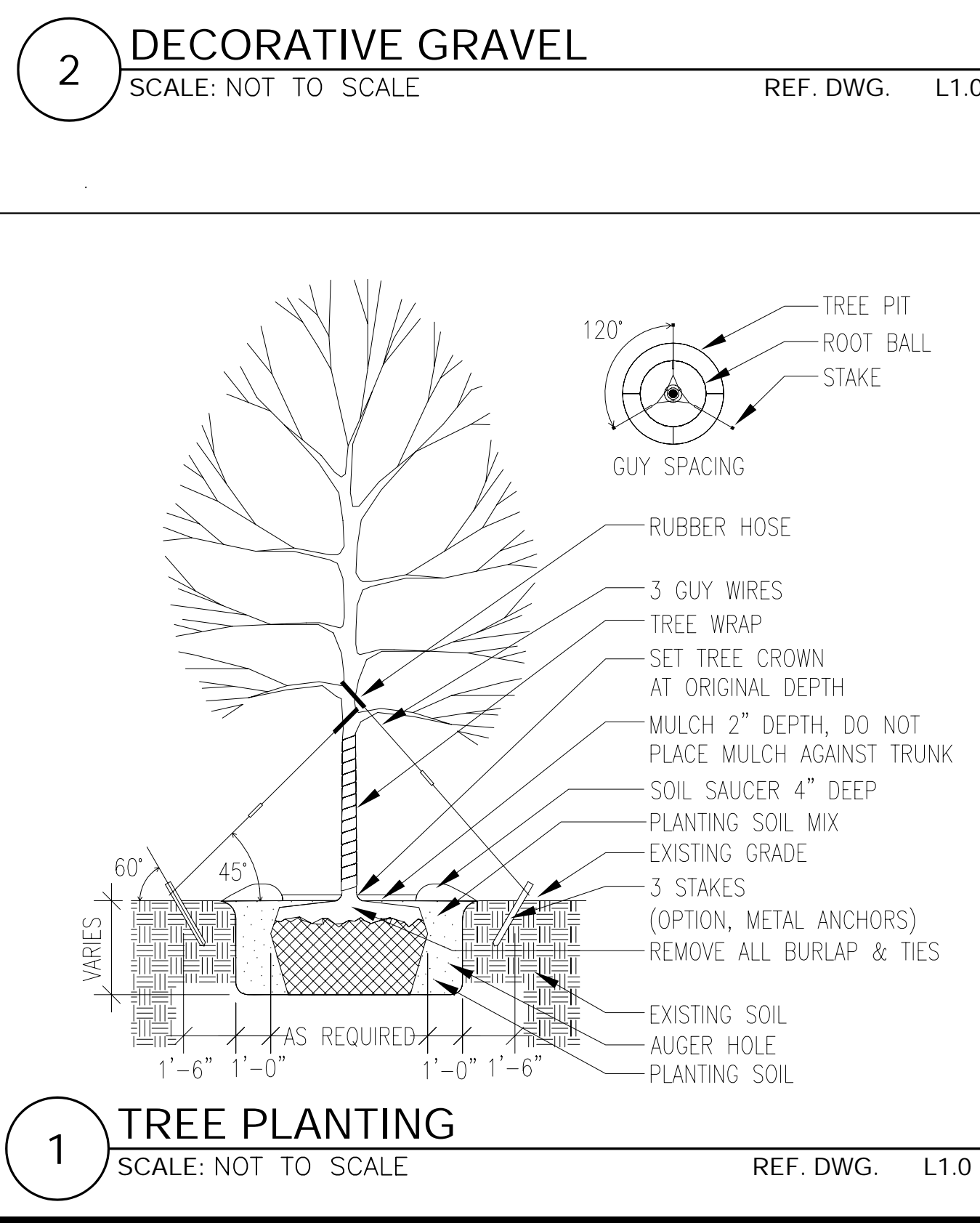
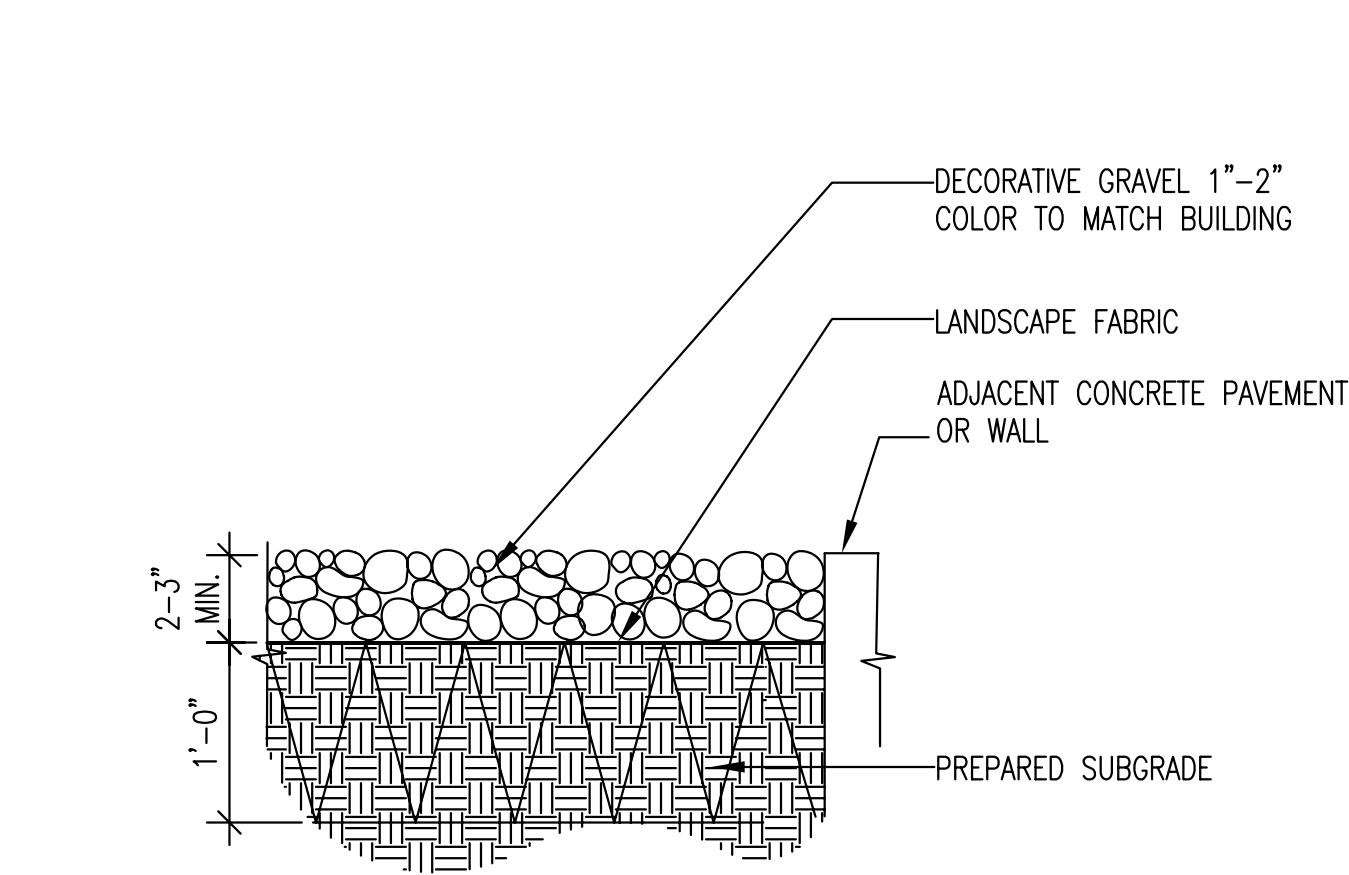
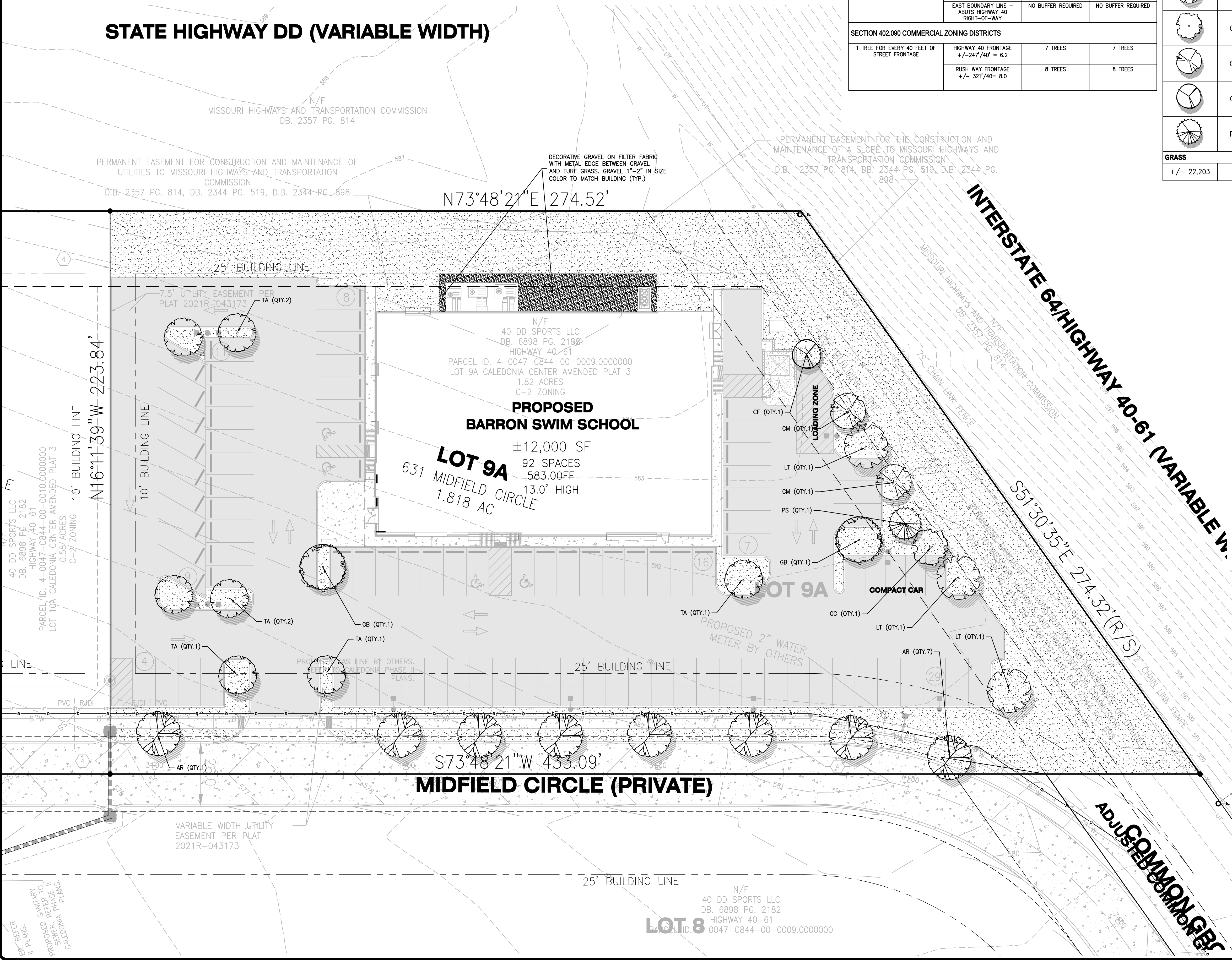
PROPOSED PLANT MATERIAL SCHEDULE						
SYMB.	ABBREVIATION	QTY.	BOTANICAL NAME	COMMON NAME	SIZE	MATURE HEIGHT
TREES						
	AR	8	Acer rubrum "Armstrong"	Red Maple	2" CAL. MIN.	B&B 50'
	GB	2	Ginkgo biloba (Male cultivar only)	Ginkgo	2" CAL. MIN.	B&B 35'-50'
	TA	7	Tilia americana	Linden, American (Basswood)	2" CAL. MIN.	B&B 50'-70'
	LT	3	Tuliptree	Liriodendron tulipifera	2" CAL. MIN.	B&B 60'-70'
	CC	1	Cercis canadensis	Redbud	1.5" CAL. - 4' HT. MIN.	B&B 20'-30'
	CM	2	Cornus mas	Cornelian-cherry dogwood	1.5" CAL. - 4' HT. MIN.	B&B 20'-25'
	CF	1	Cornus florida	Flowering Dogwood	1.5" CAL. - 4' HT. MIN.	B&B 20'-25'
	PS	1	Eastern White Pine	Pinus strobus	6"-8" HT. MIN.	B&B 50'-80'
GRASS						
+/- 22,203	SF		Fescue seed		SEED	

DEVELOPER/OWNER: **BARRON SWIM SCHOOL**
1158 LINDBERGH BUSINESS CT.
ST. LOUIS, MO 63123

LANDSCAPE ARCHITECTS: **COLE**
CORPORATE ARCHITECTURE CERTIFICATE #004603446
JOSEPH C. HORVATH, III
NUMBER 06-0000000000
LA-200701020000
06/15/2021

CALEDONIA CENTER, LOT 9A
O'FALLON, MO 63368

LANDSCAPE PLAN



USER: Joe Horvath TAB: L1.0 LANDSCAPE PLAN
DATE: 06/14/21
DRAWING: S:\025\2021\21-0036-000A\CADD\C-Plan\PlotSheet3\O.PLAN_LAND_21-0036.dwg

+ ST. CHARLES
1520 S. Fifth Street
Suite 307
St. Charles, MO 63303
636.978.7508 fax
www.coleint.com

COLE
CIVIL ENGINEERING / SURVEYING / PLANNING / LANDSCAPE ARCHITECTURE
Cole & Associates, Inc. is a Missouri Corporation d.b.a. Cole Design Group, Inc. in Arkansas & Texas licenses referred to as "Cole"

DESIGN/CALC BY: CAW
DRAWN BY: CAW
CHECKED BY: AMG
DRAWING SCALE: AS SHOWN
DATE: 06/14/21
Job Number: 21-0036-000A
Sheet Number: L1.0