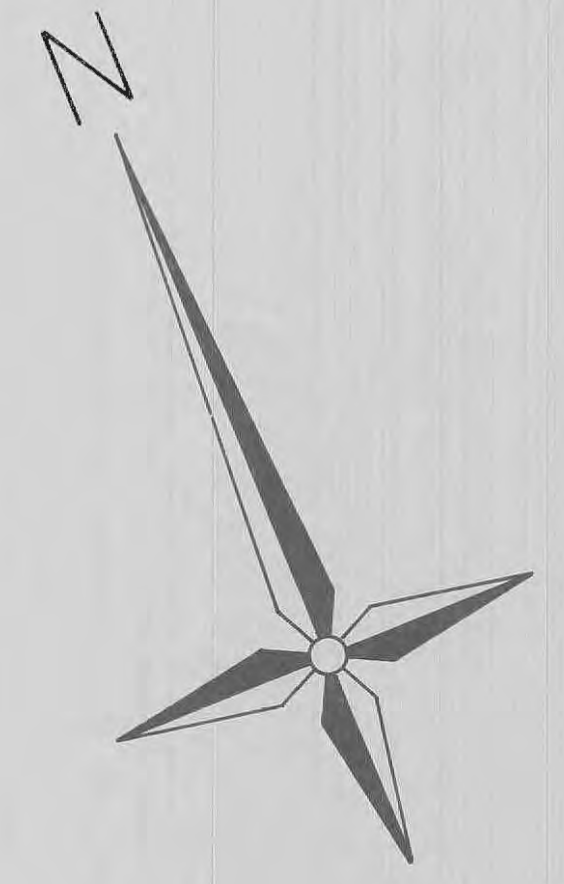


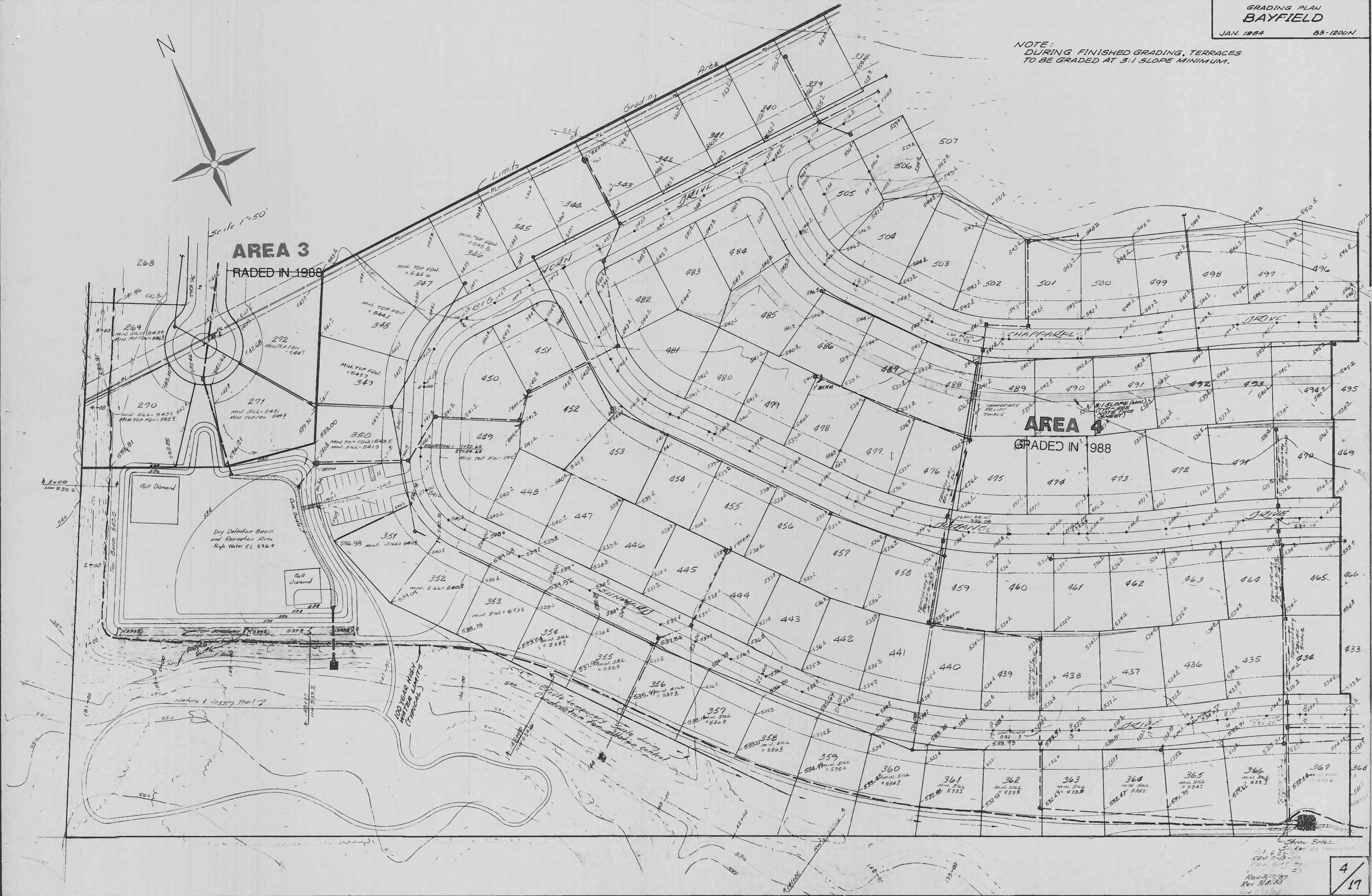
NOTE:
 DURING FINISHED GRADING, TERRACES
 TO BE GRADED AT 3:1 SLOPE MINIMUM.



Scale 1"=50'

AREA 3
 GRADED IN 1988

AREA 4
 GRADED IN 1988



Ball Diamond
 Dry Detention Basin and Recreation Area
 High Water EL 536.4

100 Year HWY
 Water Limits
 (Typical)

Best Temporary Grade during
 Construction for Detention Control

3:1 SLOPE (MIN.)
 SEE NOTE THIS SHEET

Sheet 4 of 17
 Rev 1/25/80
 Rev 5/17/80
 Rev 3/15/82
 Rev 3/1/83